



AVG 9.0 Email Server Edition

90.4 (31. 3. 2010)

Copyright AVG Technologies CZ, s.r.o. All rights reserved.

RSA Data Security, Inc. MD5 Message-Digest Algorithm, Copyright (C) 1991-2, RSA Data Security, Inc. Created 1991
C-SaCzech, Copyright (c) 1996-2001 Jaromir Dolecek(dolecek@ics.muni.cz)
zlib, Copyright (c) 1995-2002 Jean-loup Gailly and Mark Adler



1.	4
2. AVG	5
2.1	5
2.2	5
2.3	5
2.4	6
2.5 MS Exchange	6
3. AVG	8
3.1	8
3.2	9
3.3	9
3.4	10
3.5 AVG	10
3.6	-	11
3.7	-	12
3.8	- DataCenter	14
3.9	14
3.10	15
4. MS Exchange Server 2007/ 2010	18
4.1	18
4.2 MS Exchange	(TA)	22
4.3 MS Exchange	(SMTP TA)	24
4.4 MS Exchange	(VSAPI)	24
4.5	27
4.6	28
5. MS Exchange Server 2000/ 2003	30
5.1	30
5.2 VSAPI 2.0	33
5.3 MS Exchange	(VSAPI)	34
5.4	37
5.5	38



6. AVG for Kerio MailServer	40
6.1	40
<i>6.1.1 Antivirus</i>	40
6.1.2	40
7. Anti-Spam	46
7.1 Anti-Spam	46
7.2 Anti-Spam	48
7.3 Anti-Spam	48
7.3.1 <i>Anti-Spam</i>	48
7.3.2 가	48
7.3.3	48
7.4	54
7.5 RBL	55
7.6	56
7.7	57
7.8	59
8. AVG	60
9. FAQ	63



1.

AVG 9.0 Email Server Edition

AVG 9.0 Email Server Edition

AVG 9.0 Email Server Edition

가 **AVG 9.0 Email Server Edition** AVG PC AVG
AVG

AVG . AVG가

AVG 가 *Internet Security* 가 [http://](http://www.avg.com)
www.avg.com



2. AVG

2.1.

AVG 9.0 Email Server Edition 가

- Windows 2008 Server Edition(x86 x64)
- Windows 2003 Server(x86, x64) SP1
- Windows 2000 Server SP4 + 1

2.2.

- **MS Exchange 2000 Server(1)**
 : Exchange 2000 Server AVG 1
 . **AVG for MS Exchange 2000/2003 Server**
 VSAPI 2.0(Exchange 2003 Server 2.5)
- **MS Exchange 2003 Server**
- **MS Exchange 2007 Server**
- **MS Exchange 2010 Server**
- **AVG for Kerio MailServer** 6.7.2

2.3.

AVG 9.0 Email Server Edition :

- Intel Pentium CPU 1.5GHz
- 500MB 가 ()
- 512MB RAM



AVG 9.0 Email Server Edition

- Intel Pentium CPU 1.8GHz
- 600MB 가 ()
- 512MB RAM

2.4.

AVG Email Server가

AVG 9.0 Email Server Edition
Windows

- / / 가 AVG Email Server Edition . AVG File Server Edition
- Email Server Edition / AVG File Server Edition / **AVG/ AVG**
- AVG 8.x .

Exchange - /uninstall
setupes.exe .

: C:\AVG4ES2K\setupes.exe /uninstall

Lotus Domino/ Notes - /uninstall
setupln.exe .

: C:\AVG4LN\setupln.exe /uninstall

2.5. MS Exchange

AVG for MS Exchange 2000/2003 Server VSAPI 2.0/2.5
MS Exchange 2000 Server 1
. MS Exchange 2000 Server



MS Exchange 2000 Server :

<http://www.microsoft.com/technet/prodtechnol/exchange/downloads/2000/sp3/default.aspx>

MS Exchange 2003 Server 가 .

MS Exchange 2003 Server ():

<http://www.microsoft.com/exchange/evaluation/sp2/overview.aspx>

가 .

delete 가 .

MS Exchange 2007 Server ():

<http://www.microsoft.com/downloads/details.aspx?FamilyID=44c66ad6-f185-4a1d-a9ab-473c1188954c&displaylang=ko>

3. AVG

AVG
CD

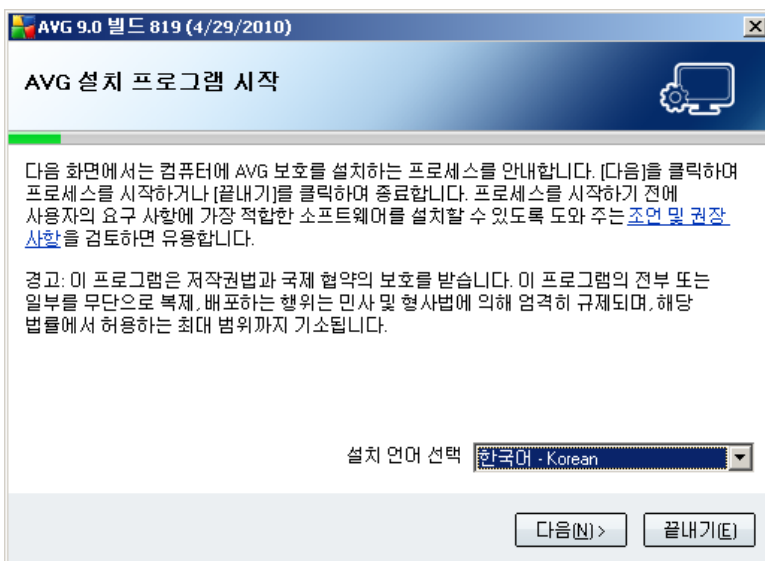
(<http://www.avg.com/download?prd=msw>)

AVG

가
CD

AVG

3.1.



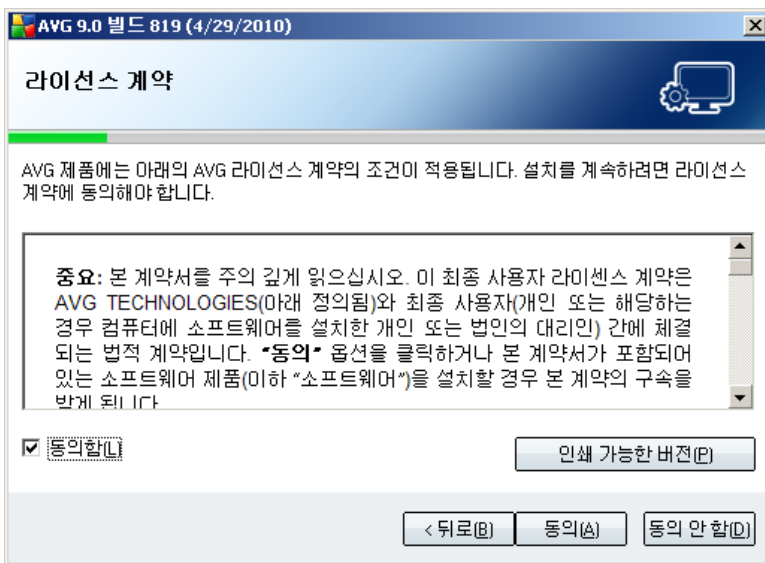
가

3.2.

AVG

가

가

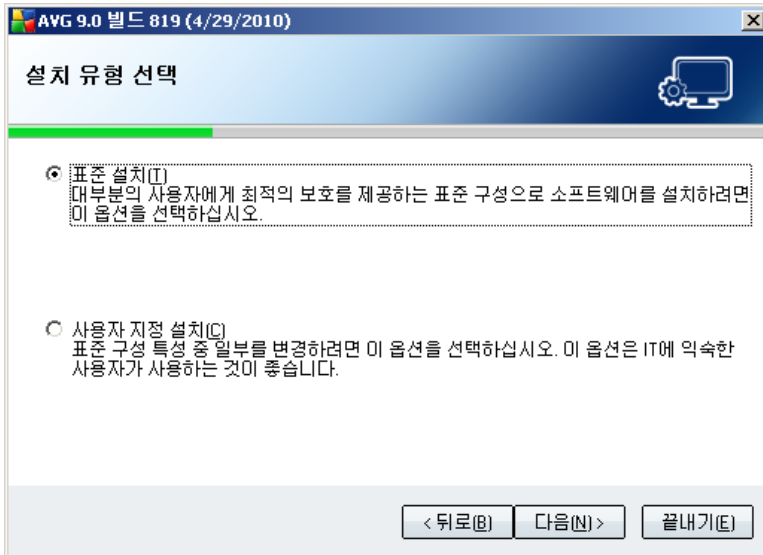


3.3.

AVG

가

3.4.



AVG

AVG

AVG

가

가

가

3.5. AVG

AVG

)

(

)

(

AVG

AVG 9.0 빌드 819 (4/29/2010)

AVG 라이선스 활성화

사용자 이름(N):

회사 이름(O):

라이선스 번호(L):

예: 9FULL-NSDRS-KUL4L-UKSFR-L96M9-B2ALT-XWMX

온라인으로 소프트웨어를 구입한 경우 라이선스 번호가 전자 메일로 사용자에게 보내집니다. 입력 오류를 방지하려면 라이선스 번호를 전자 메일에서 잘라내어 이 화면으로 붙여 넣는 것이 좋습니다.

소매점에서 이 소프트웨어를 구입한 경우 패키지에 포함된 제품 등록 카드에 라이선스 번호가 나와 있습니다. 번호를 정확하게 복사하십시오.

< 뒤로(B) 다음(N) > 끝내기(F)

가

3.6.

AVG 9.0 Server Edition 빌드 819 (4/29/2010)

대상 폴더

기본 대상 폴더가 아래에 나와 있습니다. 찾아보기 단추를 클릭하여 다른 폴더를 선택할 수 있지만 기본 설정을 사용하는 것이 좋습니다.

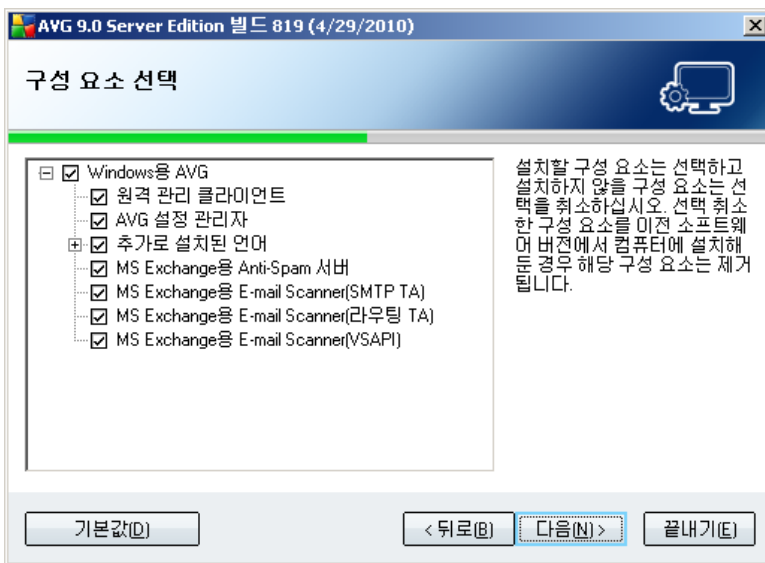
대상 폴더(O):

찾아보기(F)

< 뒤로(B) 다음(N) > 끝내기(F)

C: AVG Program Files AVG

3.7.



AVG

가

AVG

- - AVG AVG DataCenter(AVG Network Edition)

- **AVG** - AVG (: USB)

- 가 - AVG 가

:

- **MS Exchange Anti-Spam Server**

가

- **MS Exchange ()**

MS Exchange HUB 가

MS Exchange 2007 HUB

- **MS Exchange (SMTP)**

MS Exchange SMTP

MS Exchange 2007 EDGE HUB

- **MS Exchange (VSAPI)**

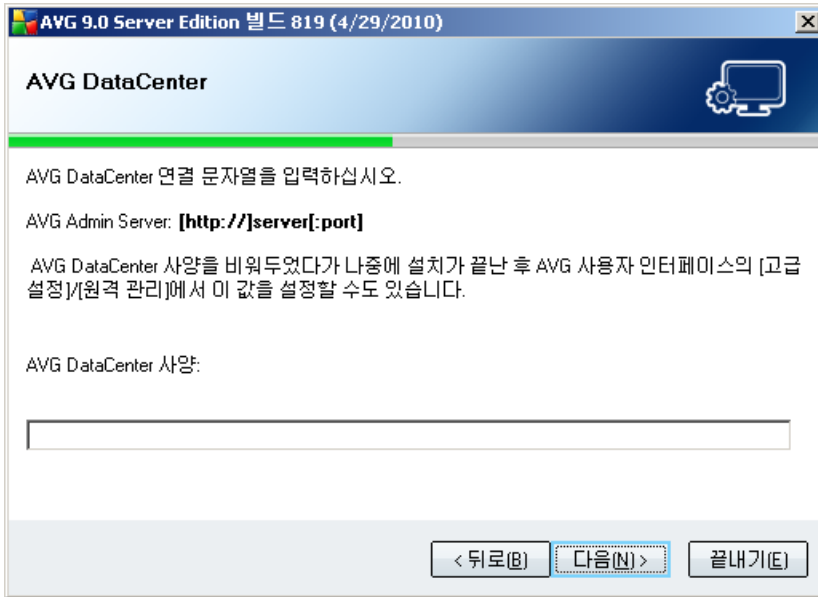
가

: MS Exchange 2007 MS Exchange 2003

3.8. - DataCenter

AVG

DataCenter



3.9.

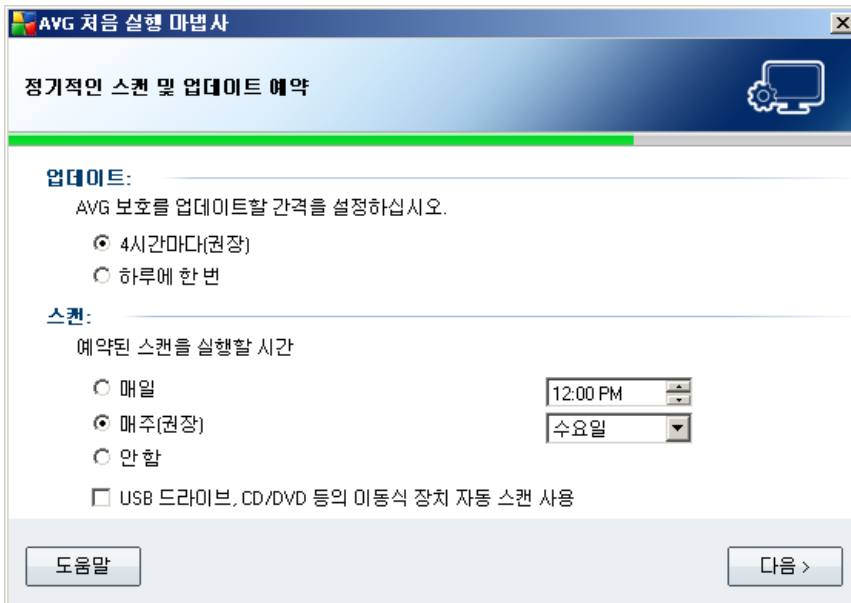
가

가

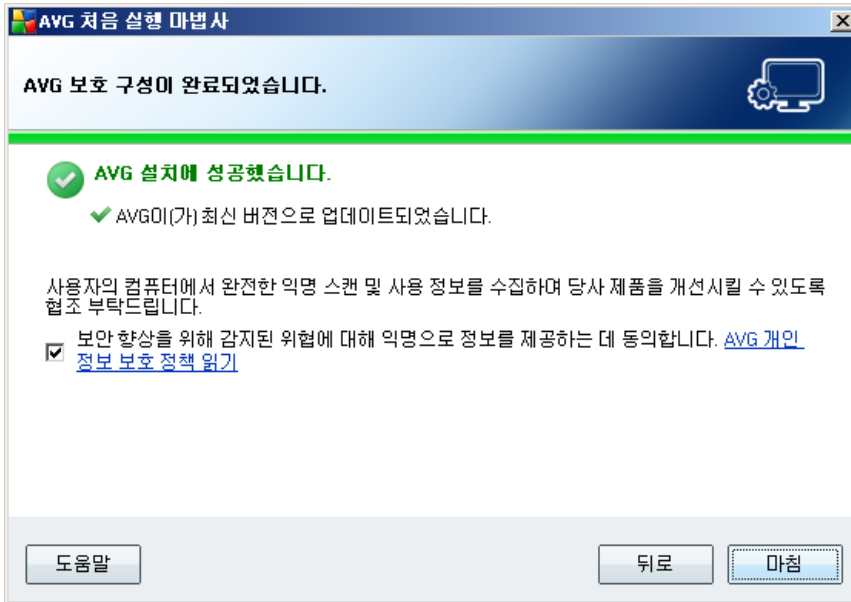
3.10.

가

가



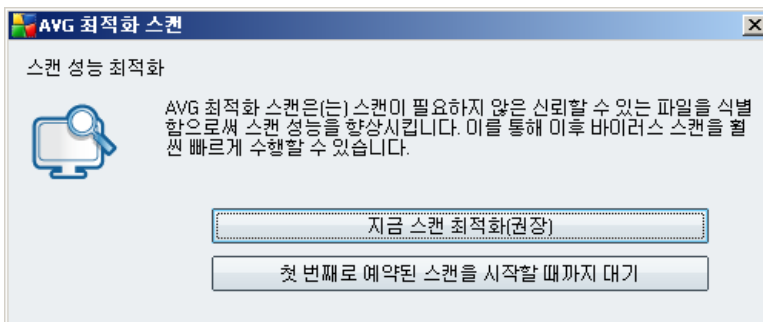
가



AVG

AVG
exe, *.dll, *.sys
Program files

Windows (*)



AVG가



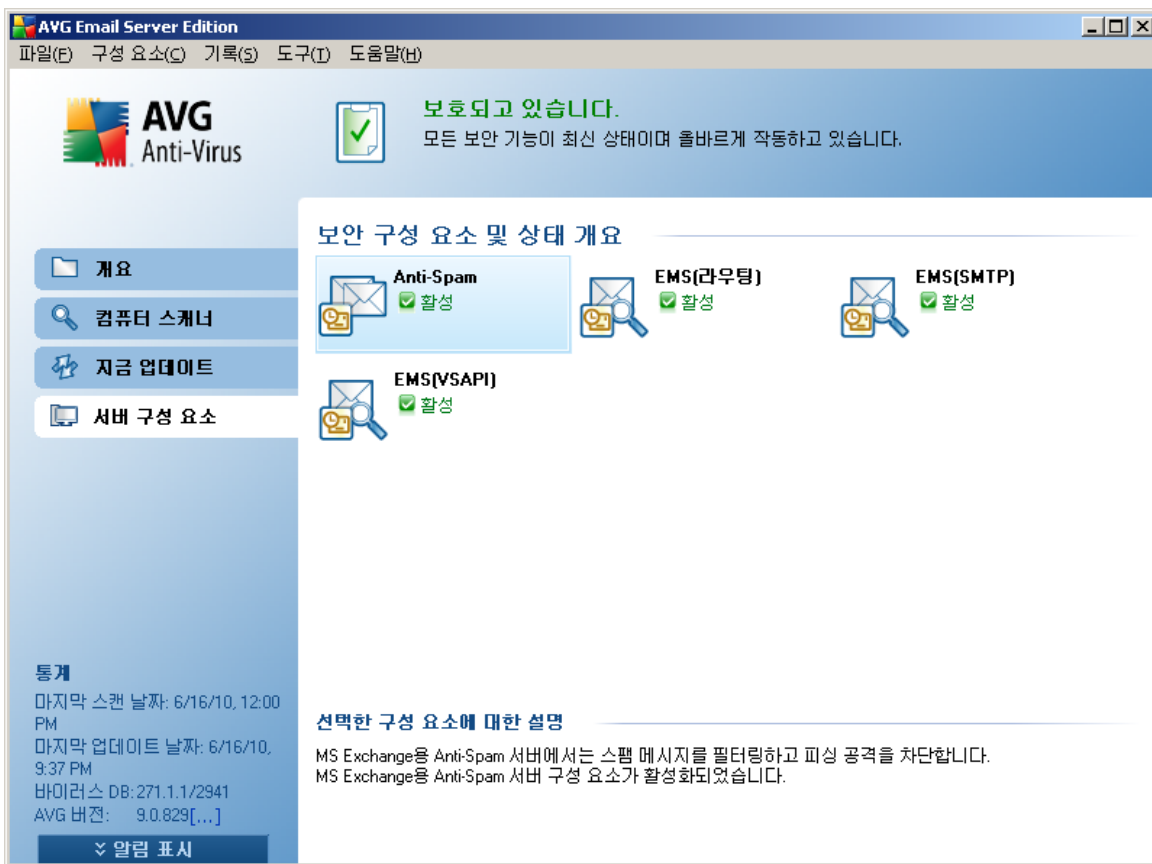
- [*MS Exchange Server 2007/ 2010*](#)
- [*MS Exchange Server 2000/ 2003*](#)
- [*AVG for Kerio MailServer*](#)

4. MS Exchange Server 2007/ 2010

4.1.

AVG for MS Exchange Server 2007

AVG 9.0 Email Server Edition



- [Anti-Spam - MS Exchange Anti-Spam Server](#)

가

- **EMS() - MS Exchange ()**

MS Exchange HUB 가

MS Exchange 2007 HUB

- **EMS(SMTP) - MS Exchange (SMTP)**

MS Exchange SMTP

MS Exchange 2007 EDGE HUB

- **EMS(VSAPI) - MS Exchange (VSAPI)**

가

. Anti-Spam



AVG Email Server Edition

파일(F) 구성 요소(C) 기록(S) 도구(T) 도움말(H)

AVG Anti-Virus

보호되고 있습니다.
모든 보안 기능이 최신 상태이며 올바르게 작동하고 있습니다.

MS Exchange용 E-mail Scanner(라우팅 TA) 구성 요소

MS Exchange용 E-mail Scanner(라우팅 TA)에서는 MS Exchange HUB 서버 역할을 통해 라우팅되는 모든 전자 메일 메시지를 검사합니다. 탐지되는 바이러스는 바이러스 저장소(으)로 이동되거나 완전히 제거됩니다.

구성 요소가 활성화됨

검사한 전자 메일 메시지 수: **0 6/14/2010, 9:35 PM 이후**
탐지된 위협: **0 6/14/2010, 9:35 PM 이후**

[스캔 결과](#), [통계 값 새로 고침](#), [통계 값 다시 설정](#)

통계
마지막 스캔 날짜: 6/16/10, 12:00 PM
마지막 업데이트 날짜: 6/16/10, 9:37 PM
바이러스 DB: 271.1.1/2941
AVG 버전: 9.0.829[...]

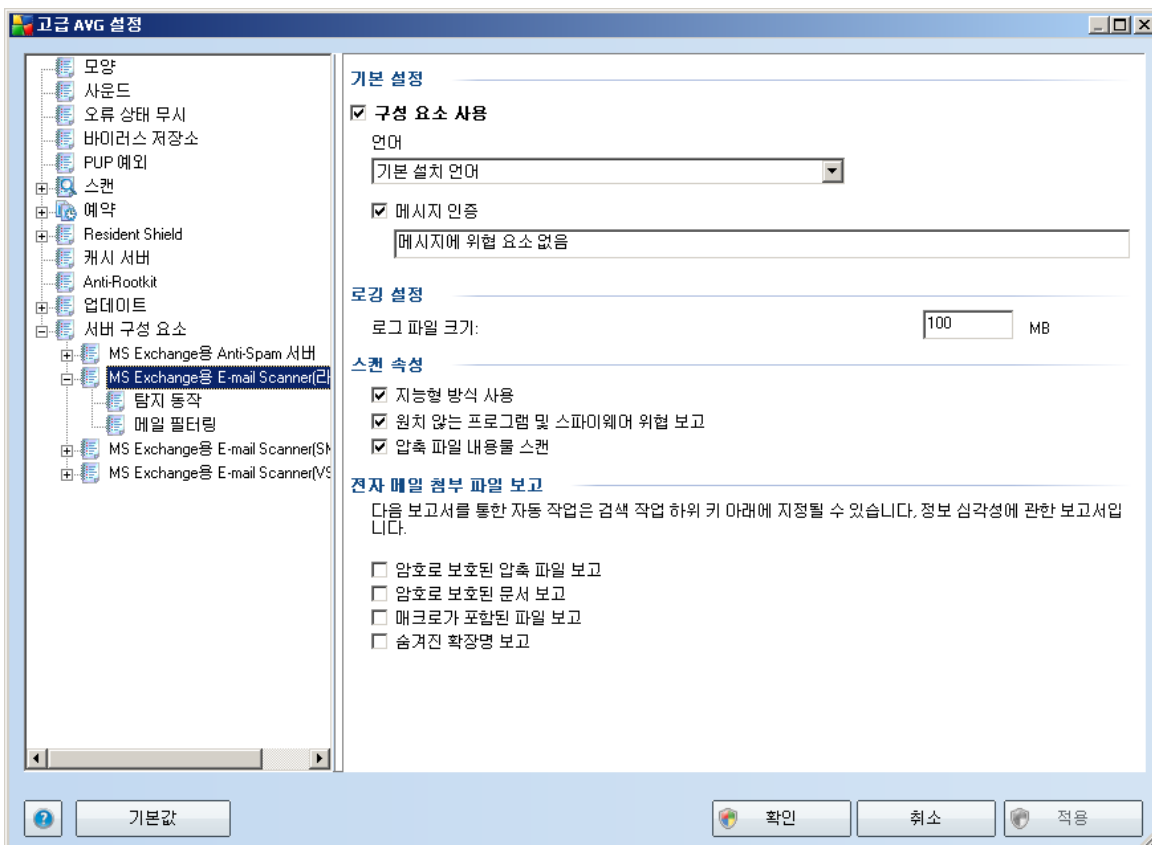
≡ 알림 표시

- -
- -

4.2. MS Exchange (TA)

MS Exchange ()

MS Exchange (TA)



-
-
- 가
- 100MB
-
- 가
- zip, rar
- [INFORMATION] 가
- ()).
-
-
- 가
-
-
-
-

4.3. MS Exchange (SMTP TA)

MS Exchange (SMTP)

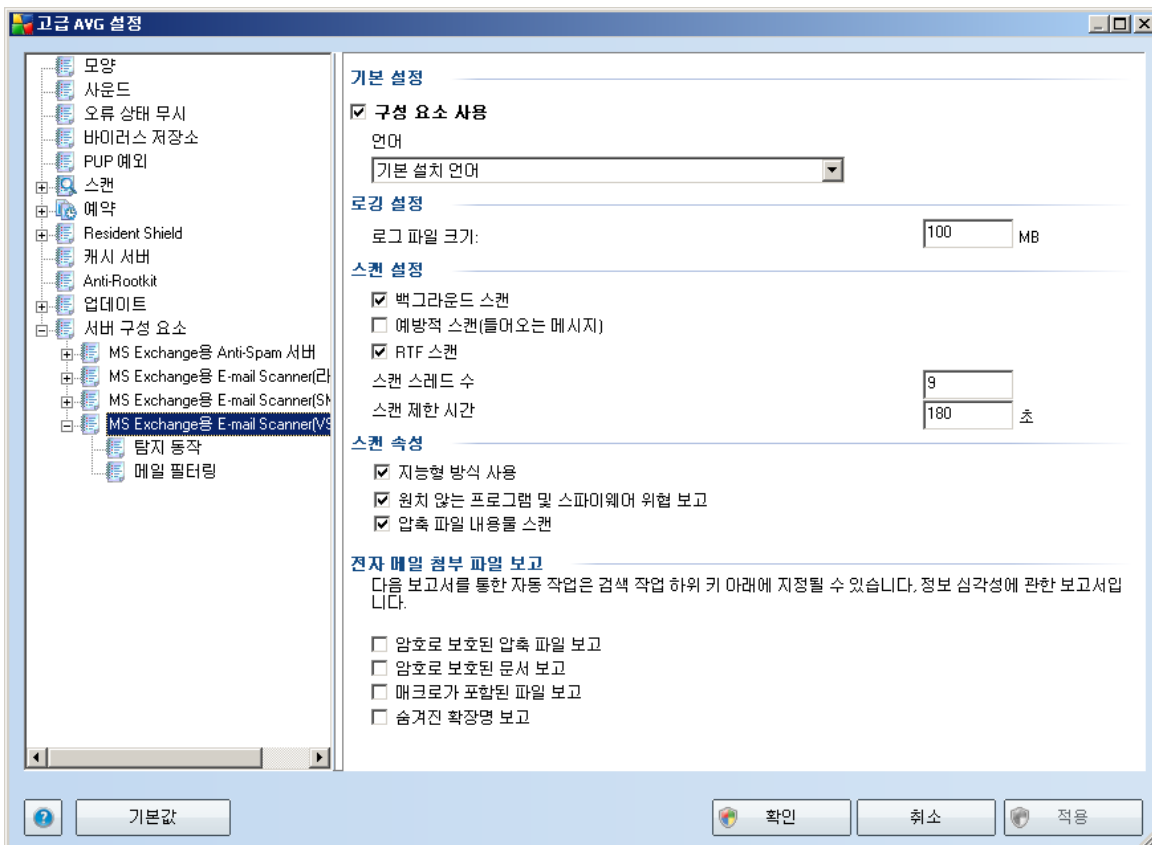
Exchange (TA)

[MS](#)

- _____
- _____

4.4. MS Exchange (VSAPI)

MS Exchange (VSAPI)



-
-
- 100MB
- - VSAPI 2.0/2.5
 - AVG, Exchange
 - AVG for Exchange 2007 Server
 - (: Microsoft Exchange)
 - 가
- - ()
 - VSAPI 2.0/2.5
 - 가 Exchange (30).
 - (FIFO) 가 가
 - :
 - 가 MS
 - Outlook
- **RTF** - RTF
- 가
- ' + 1

(' ' + 1) 2

' ' 5

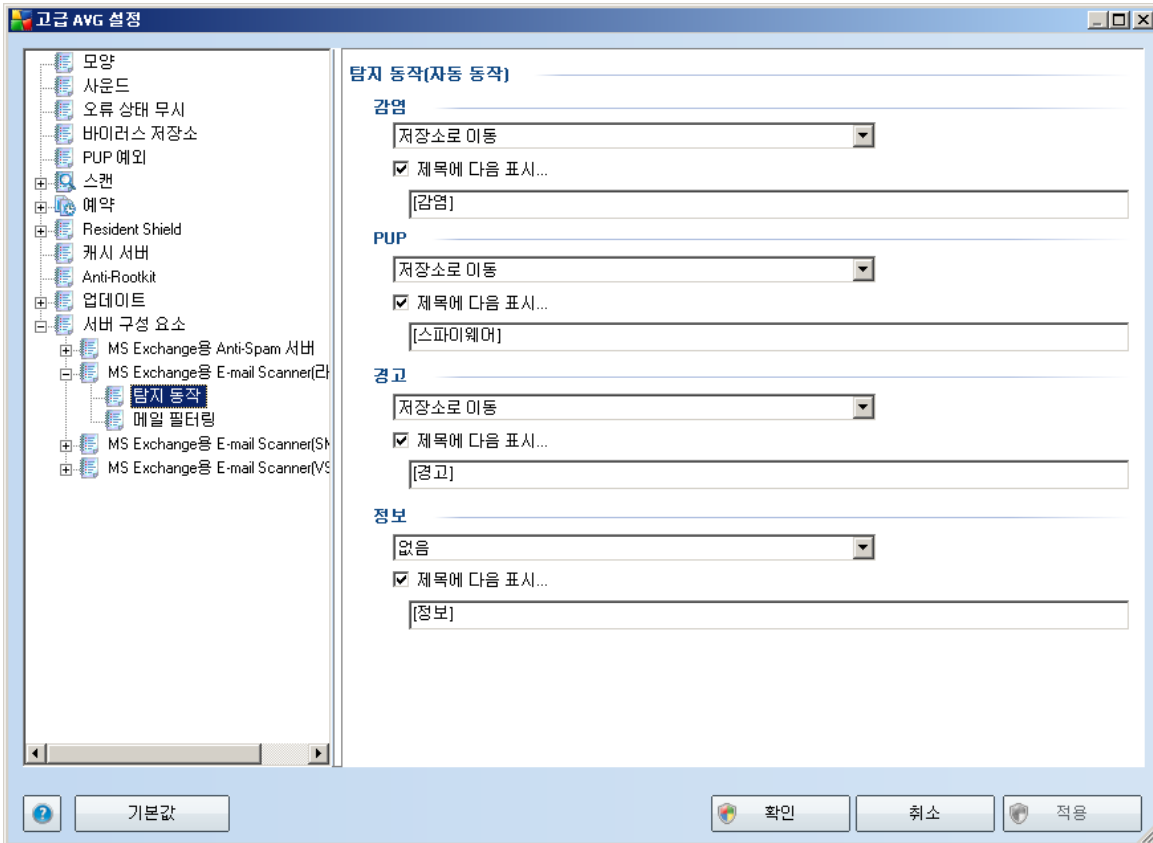
- 가
() , 180
- -
- 가
- - zip, rar
- ()
-
-
- 가
-

Microsoft VSAPI 2.0/2.5
VSAPI 2.0/2.5

- <http://support.microsoft.com/default.aspx?scid=kb:en-us:328841&Product=exch2k> - Exchange
- <http://support.microsoft.com/default.aspx?scid=kb:en-us:823166> - Exchange 2003 Server 가 VSAPI 2.5

- _____
- _____

4.5.



-
- **PUP()**
-

-

-

-

-

/ 가

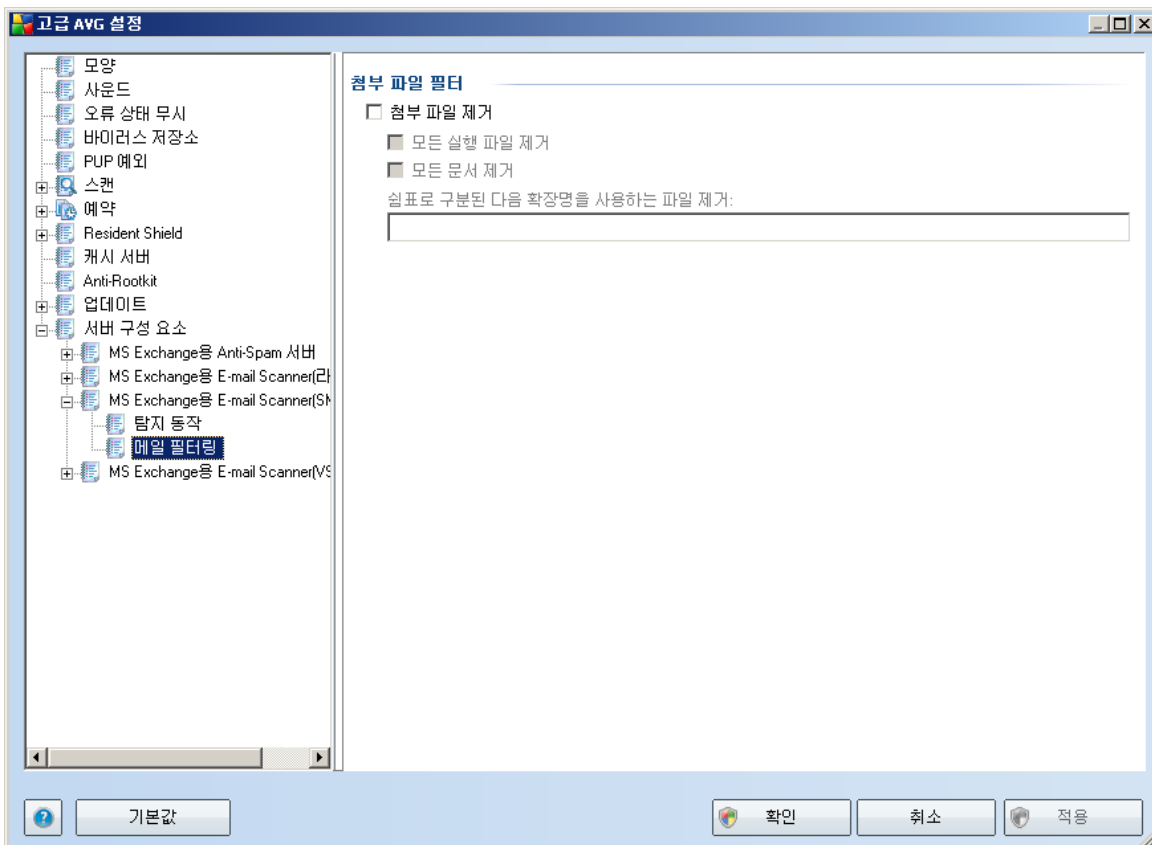
...

:

MS Exchange

(VSAPI)

4.6.



()

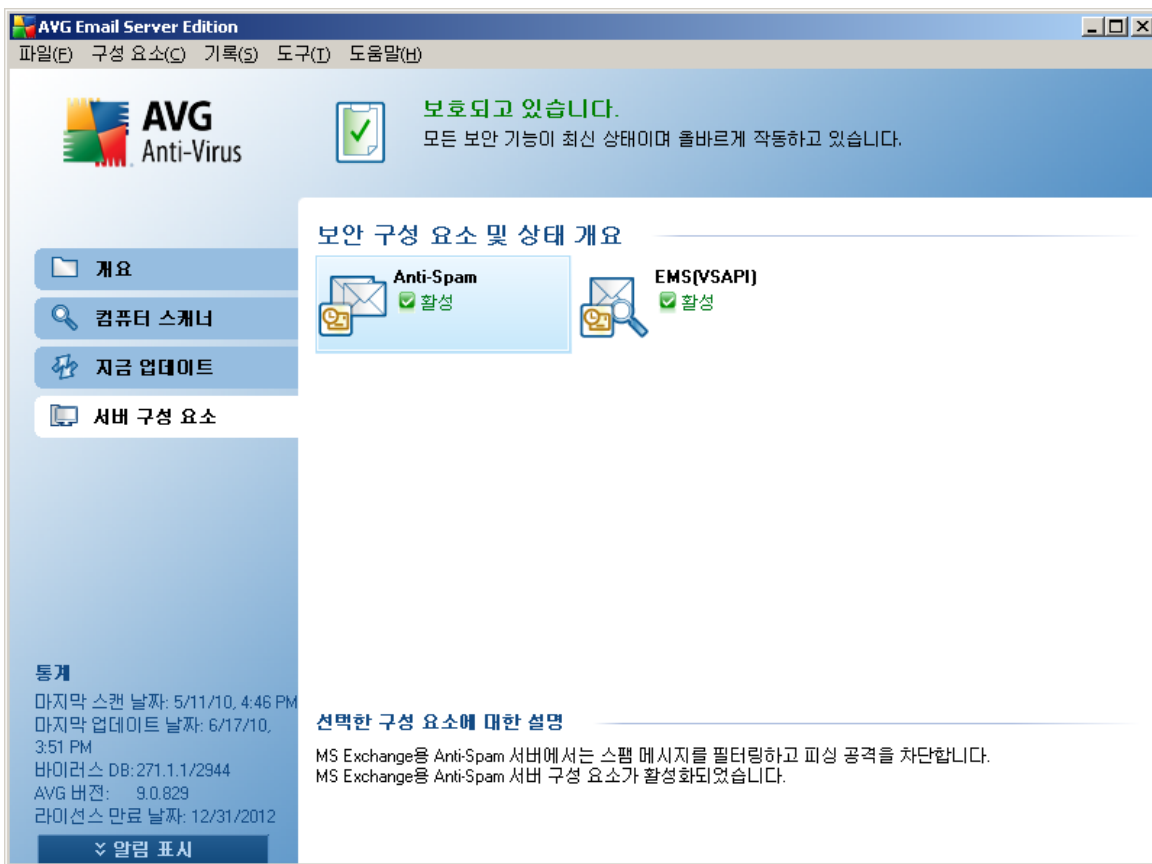
- - .
- - .
- - .
- - .

5. MS Exchange Server 2000/ 2003

5.1.

MS Exchange Server 2000/2003
Edition

AVG 9.0 Email Server



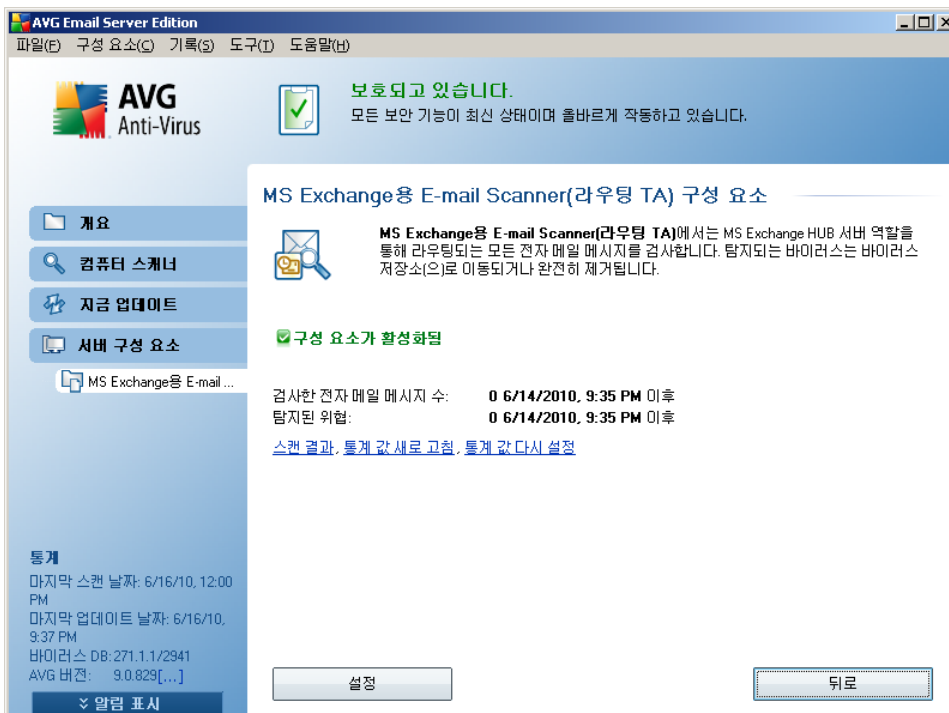
- [Anti-Spam - MS Exchange Anti-Spam Server](#)

가

• EMS(VSAPI) - MS Exchange (VSAPI)

가

. Anti-Spam



- -
- -

5.2. VSAPI 2.0

API 2.0(MS Exchange 2000 Server

VSAPI 2.0)

2000/2003 Server

.virusinfo.txt

. AVG for Exchange

가

가

가

API 2.5(MS Exchange 2003 Server

VSAPI 2.5)

2000/2003 Server

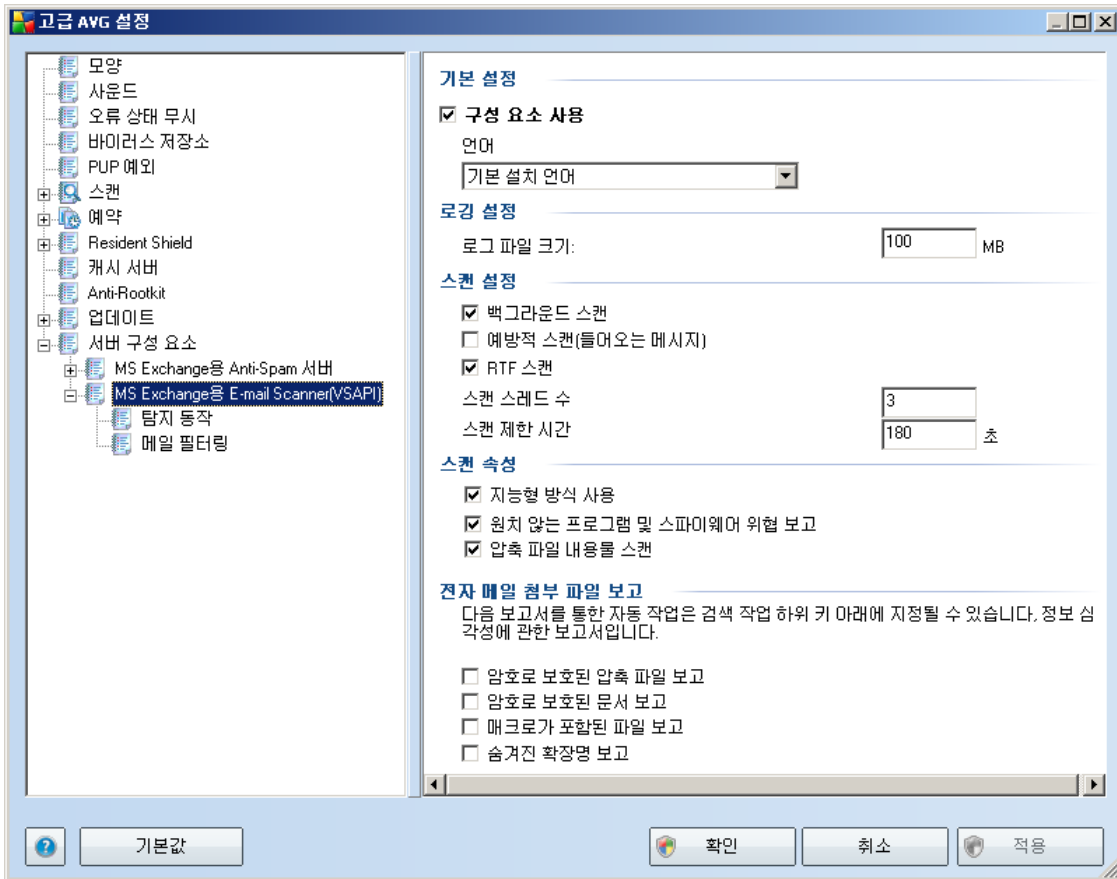
AVG for MS Exchange

5.3. MS Exchange

(VSAPI)

MS Exchange

(VSAPI)

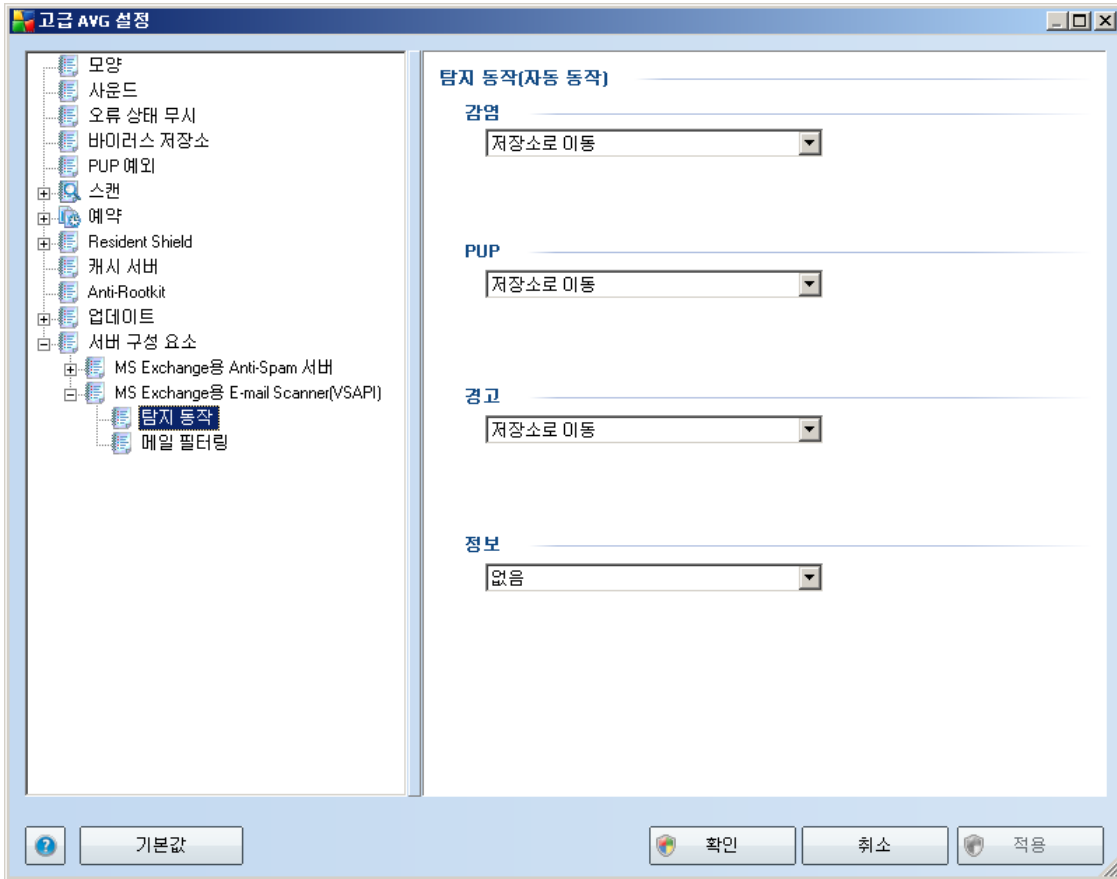


-
-
-

100MB

- VSAPI 2.0/2.5
 , Exchange
 AVG
 AVG for Exchange 2007 Server
 (: Microsoft Exchange
)
 가
- ()
 VSAPI 2.0/2.5
 가 Exchange
 ((30)). 가 가
 (FIFO)
 :
 :
 Outlook 가 MS
- **RTF** - RTF
 가
 ' + 1
 (' + 1) 2
 ' 5
- () , 가
 180

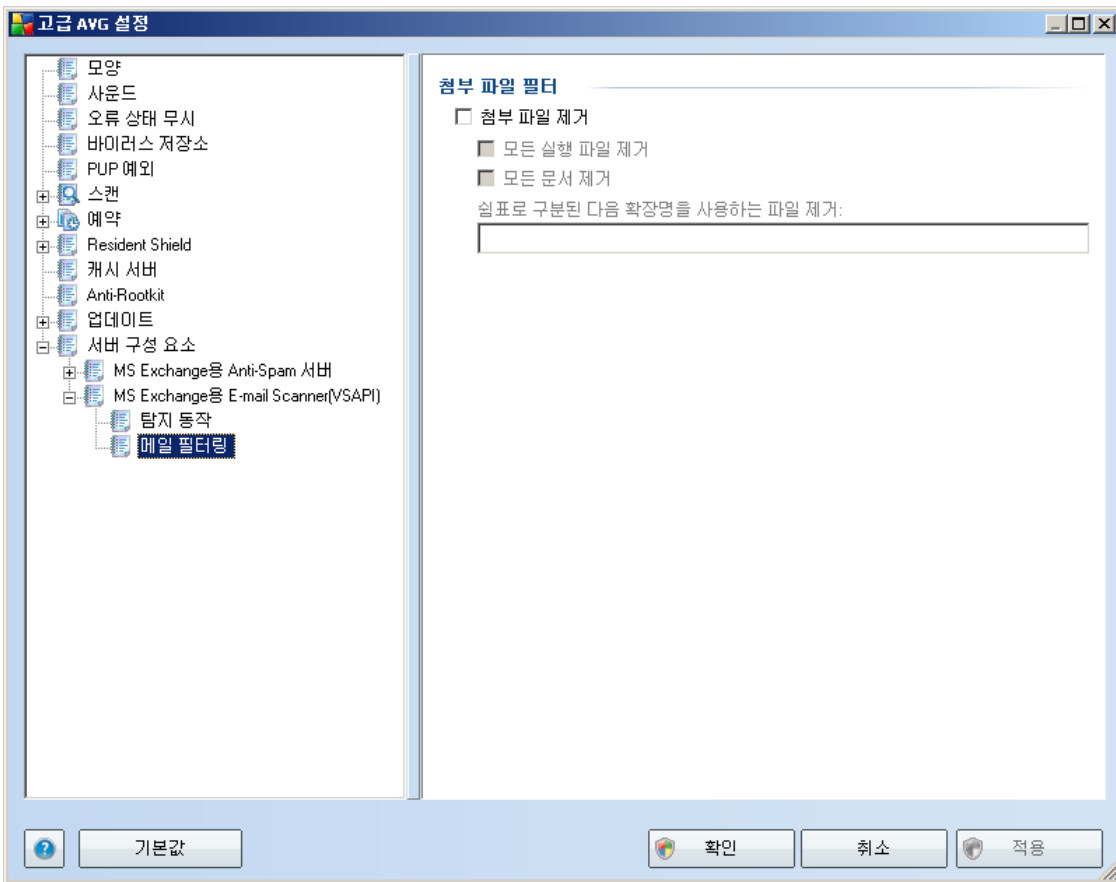
5.4.



-
- **PUP**()
-
-

-
-
-

5.5.



()

-
-
-



6.1.1. Antivirus

AVG for Kerio MailServer
Antivirus
Edition

AVG Email Server

Antivirus usage

Use integrated McAfee® antivirus engine

Use external antivirus AVG Email Server Edition Options

•

가

If a virus is found in a message

Discard the message

Deliver the message with the malicious code removed

Forward the original message to administrator address:

Forward the filtered message to administrator address:

가

가

○

가

○

가

○

○

•

(:)

If a part of message cannot be scanned (e.g. encrypted or corrupted file)

- Deliver the original message with a prepended warning
- Reject the message as if it was a virus (use the settings above)

- ... (가)
가
- ... 가

6.1.2.

Attachment Filter

Enable attachment filter

If a message attachment is blocked by this filter

The attachment will be removed from the message and the message will be delivered to the recipient

Send the sender a warning informing that the attachment was not delivered

Forward the original message to administrator address:

Forward the filtered message to administrator address:

Type	Content	Action	Description
<input type="checkbox"/> File name	*.exe	Block	EXE files
<input checked="" type="checkbox"/> File name	*.com	Block	COM files
<input checked="" type="checkbox"/> File name	*.scr	Block	Screenshot files
<input checked="" type="checkbox"/> File name	*.bat	Block	BAT files

Kerio MailServer 가

가

4 가

-
-
-
-

MIME

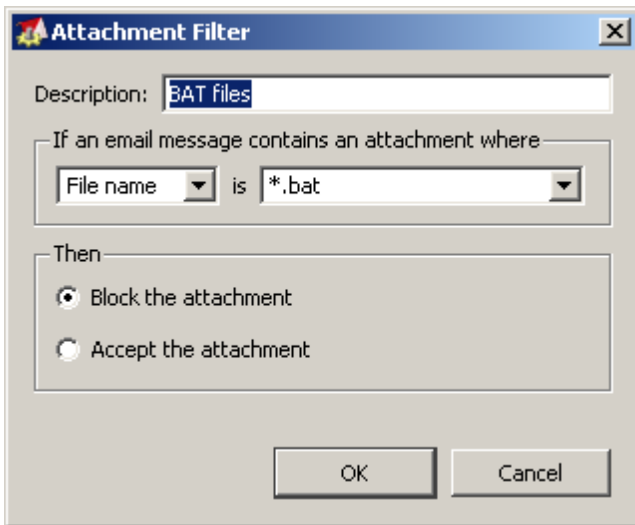
.doc. ' .doc

() ()

. 가

가...

가



-
-

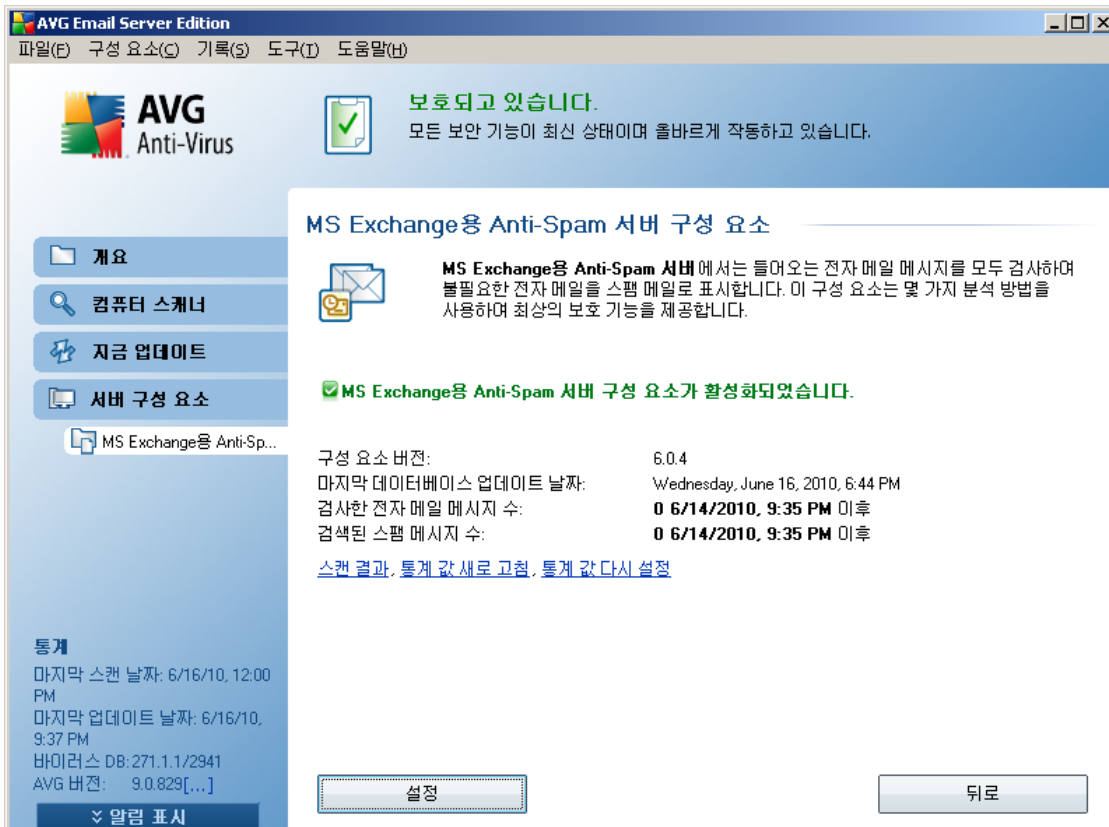
MIME)

(



7. Anti-Spam

7.1. Anti-Spam



Anti-Spam

(MS Exchange Anti-Spam Server 가) 가

가 :

Anti-Spam

- [Anti-Spam](#)
- [Anti-Spam](#)

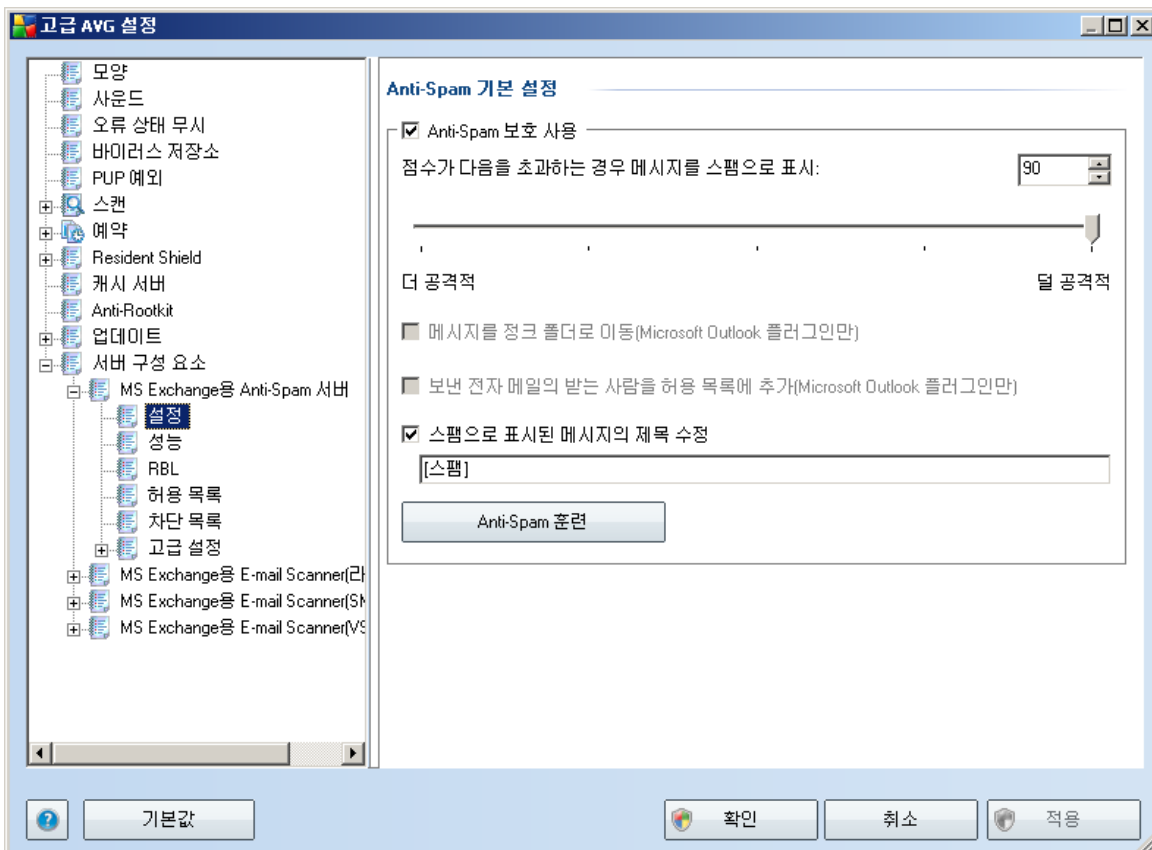
7.2. Anti-Spam

가
가

Anti-Spam

가

7.3. Anti-Spam



Anti-Spam

Anti-Spam

Anti-Spam

가

)

. 0

100

(,

50 90

) 가

50 90

90

- **90 ~ 99** -

). 가

가

(

- **80 ~ 89** -

가

가

- **60 ~ 79** -

가

. 가

- **1 ~ 59** -

- **0** -

Anti-Spam

가

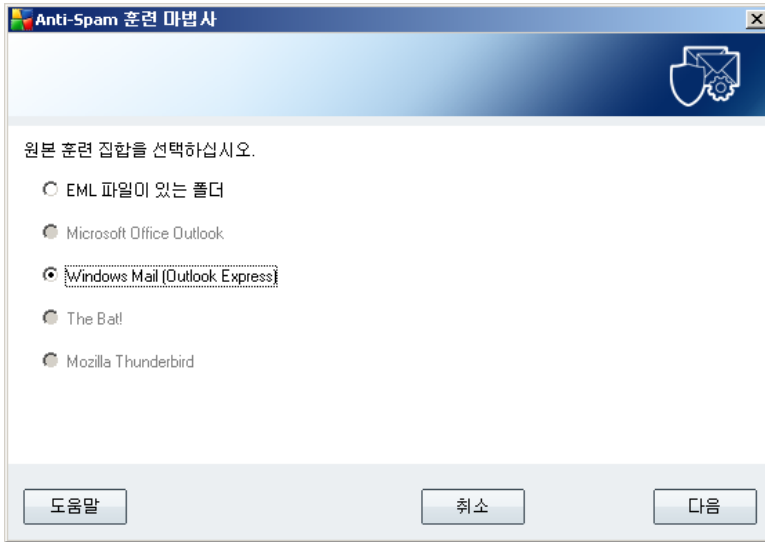
Anti-Spam

7.3.1. Anti-Spam

Anti-spam

가

가

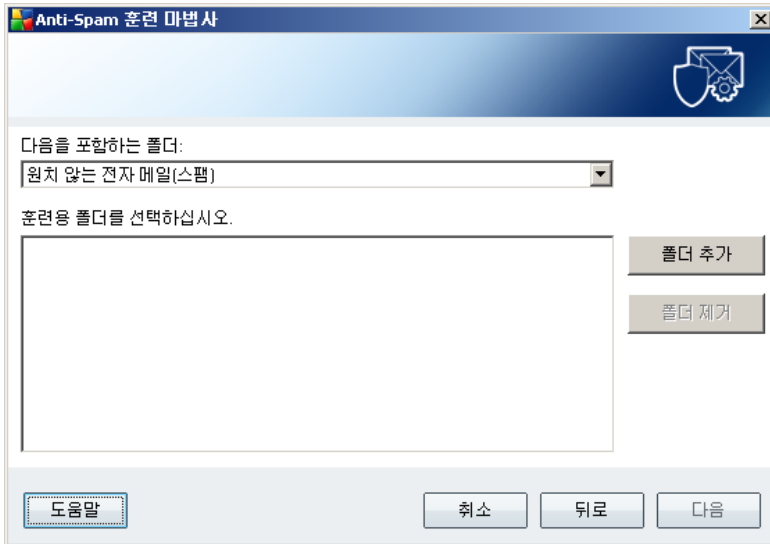


- *(MS Outlook, Outlook Express, The Bat!, Mozilla Thunderbird)*

- **EML** .eml **EML**
()

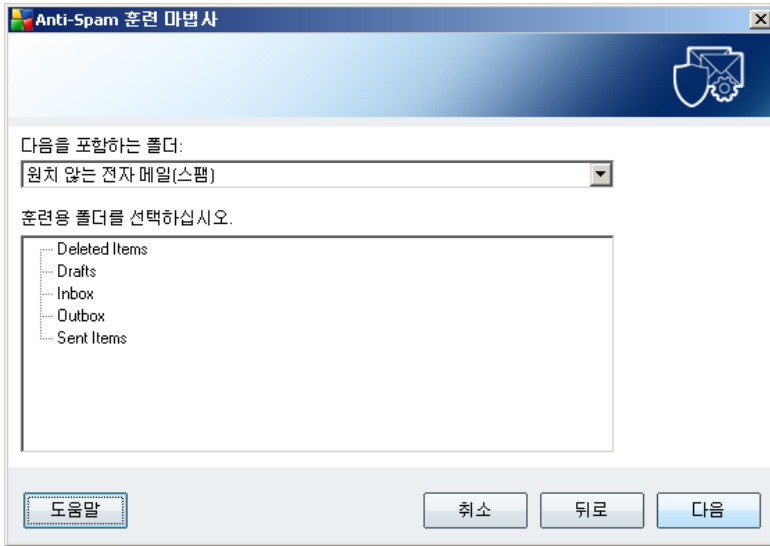
7.3.2. 가

EML



가 .eml ()가
 가 .
 ()가
 .
 .
 .

가 .



: Microsoft Office Outlook
가

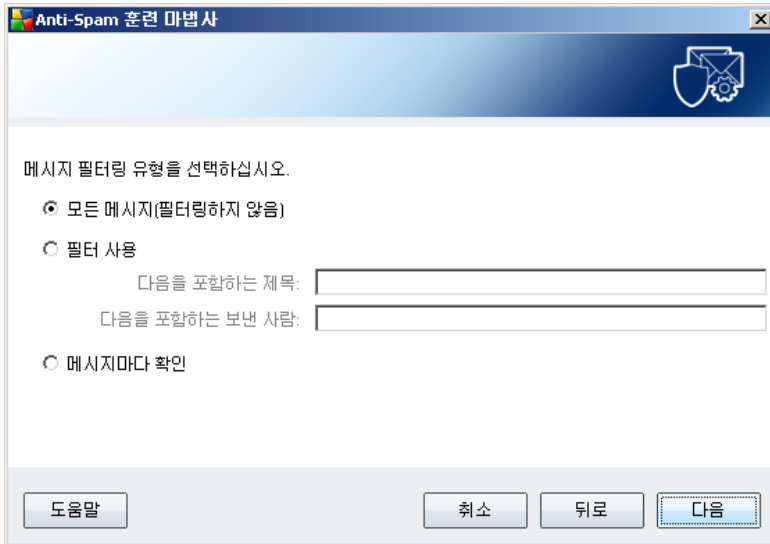
MS Office Outlook

()가

()가

가

7.3.3.



()

가

(),

가

/

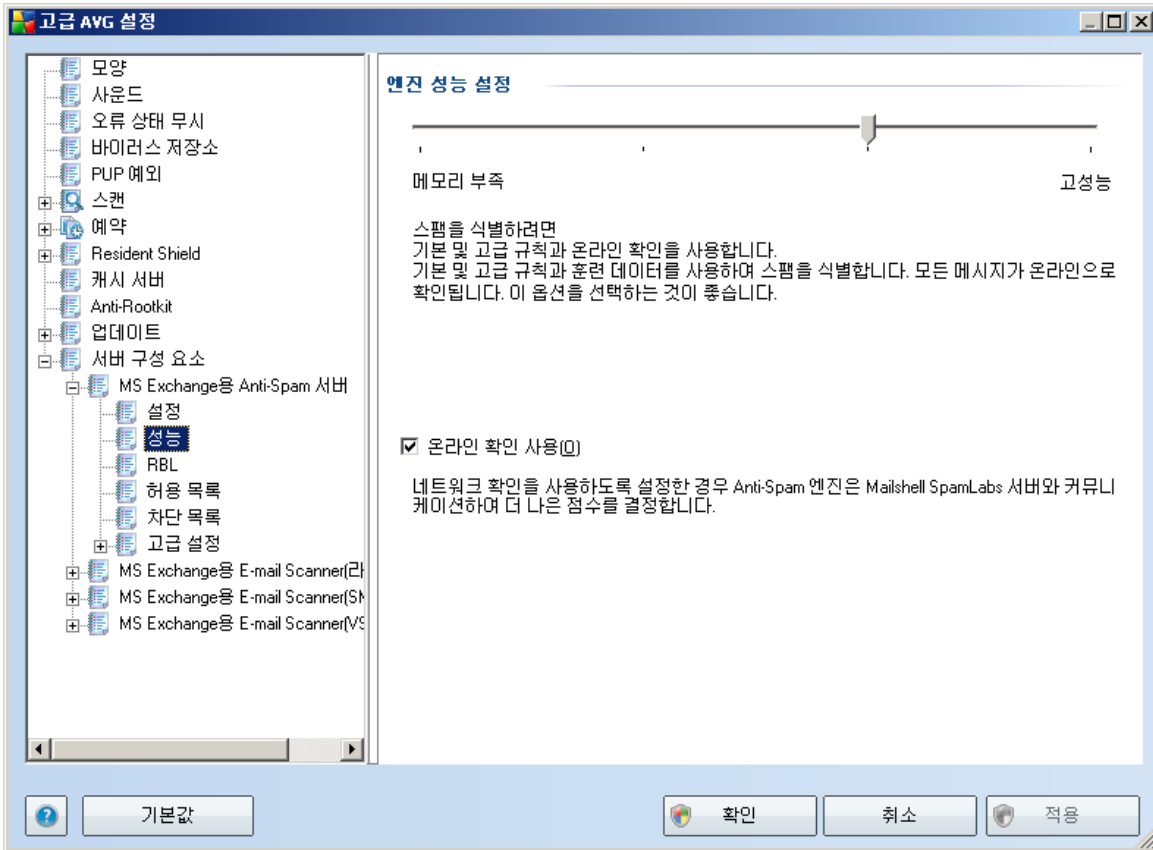
가

!:
!

가

가

7.4.



() **Anti-Spam**

- _____

- _____ , _____ , IP , _____

[Mailshell](#)

[Mailshell](#)

_____ 가 _____ , _____

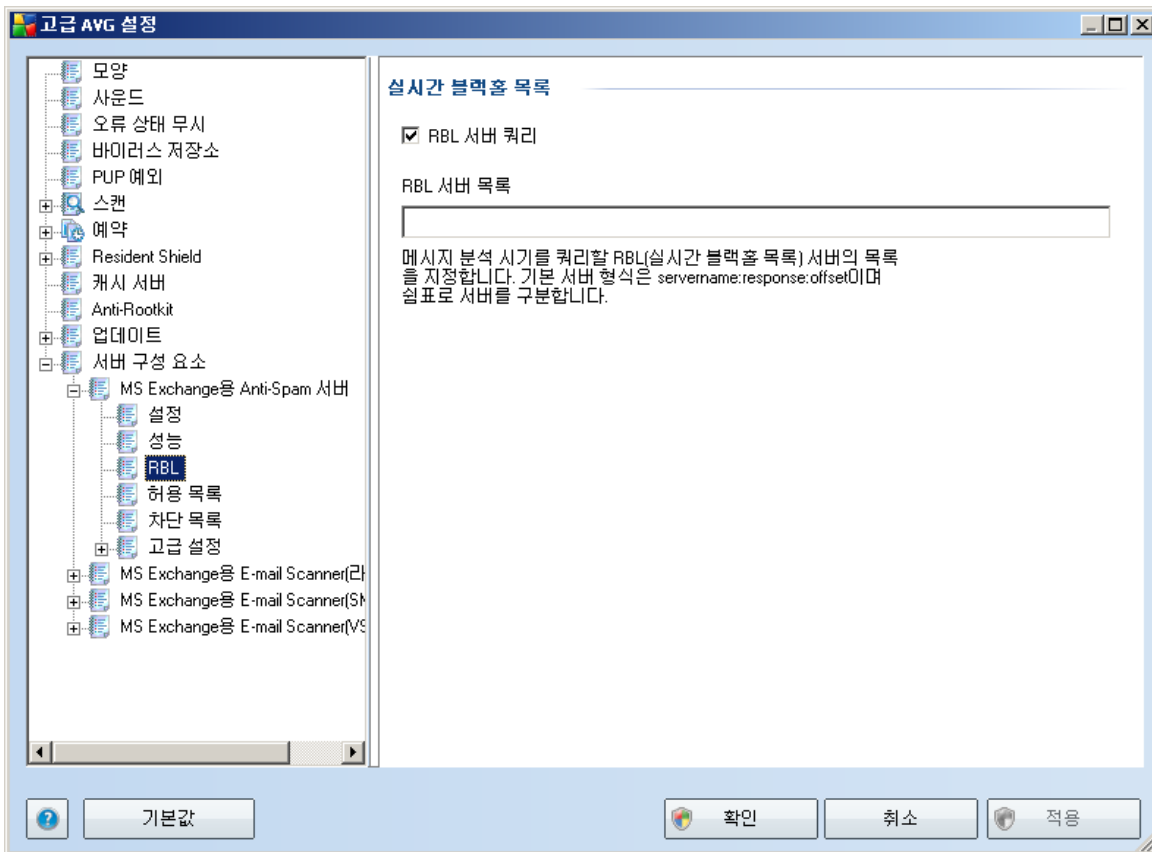
가

가
가

7.5. RBL

RBL

가



RBL

RBL()
가 DNS

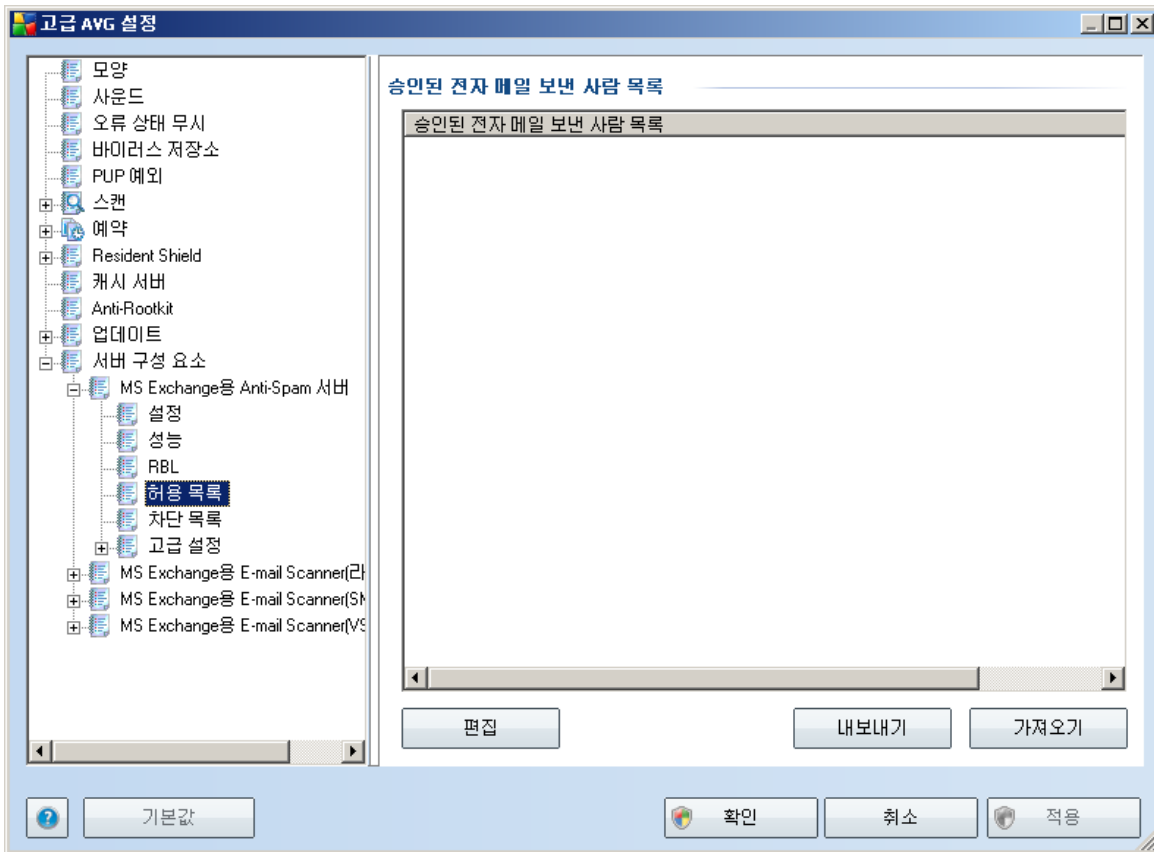
가 RBL

RBL 가

가
Anti-Spam

RBL 가 RBL 가 2 RBL
 가
 : RBL
 가

7.6.



()

가 (: *avg.com*)

/

가

• - 가

(,)

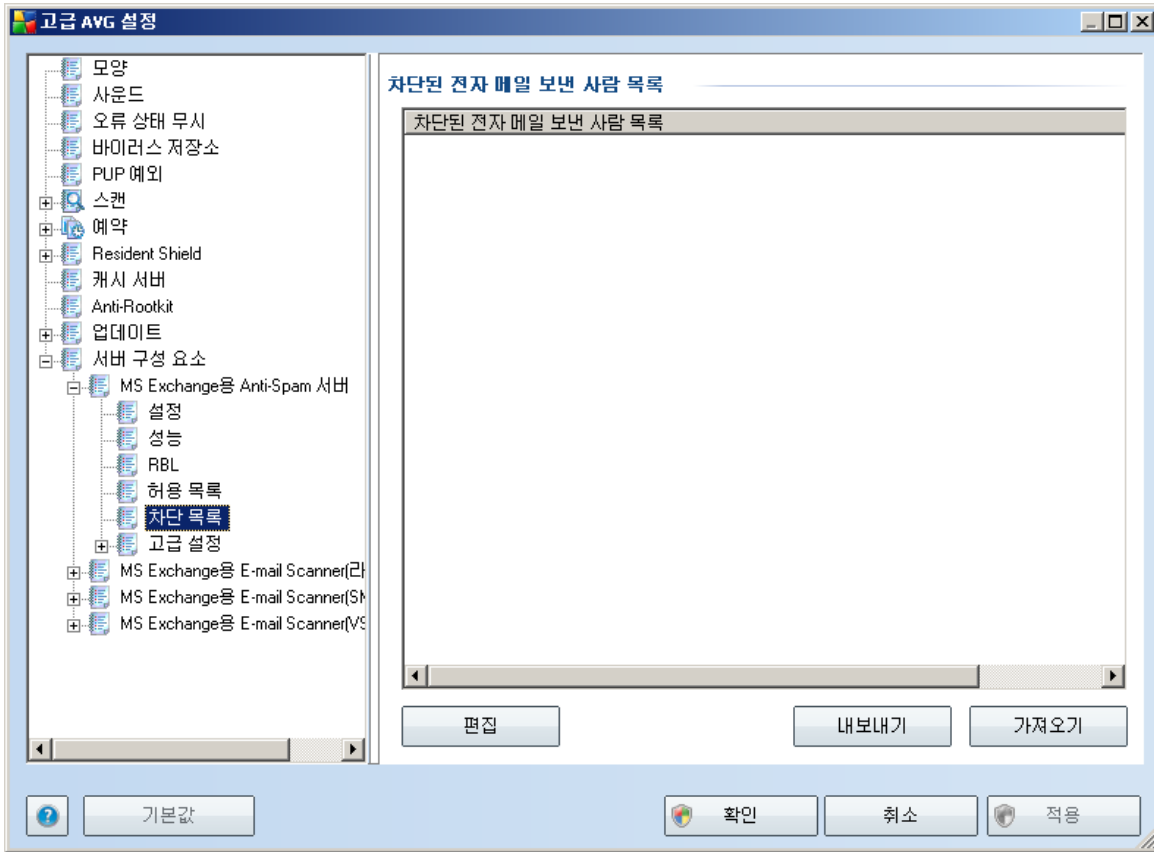
• 가 - /

가

(,)

• -

7.7.



()

spammingcompany.com)

(:
/

/

가

- - 가

(,)

- 가 - / 가 (,)

- - , .

7.8.

가 가

Anti-Spam

- - , , LegitReput e
- - , , 가
- - , 가 , IP, IP, 가,
- **RBL** - RBL , , , IP
- - , ,

8. AVG

AVG

AVG

(: USB)

AVG

Windows

/ AVG 9.0/ AVG



- **AVG**

AVG
AVG

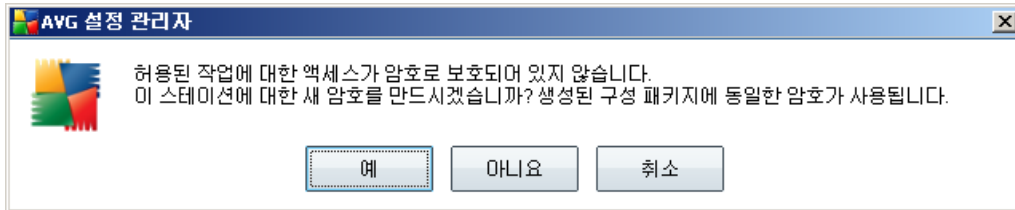
- **AVG**

AVG (.pck)

- **AVG**

AVG (.pck) AVG

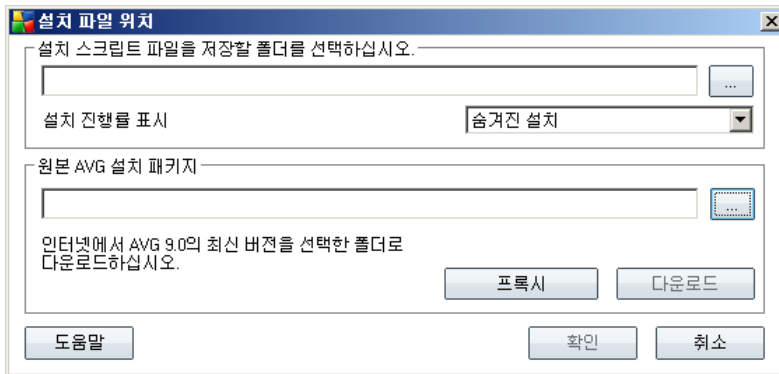
- **AVG**
AVG AVG (.pck) 가



AVG

- **AVG**

AVG



- - 가
- -



○

-

가

가

AVG
AVG

AVG

AvgSetup.bat

가
가

()
AVG가

AvgSetup.bat



9. FAQ

AVG
www.avg.com)

FAQ

가

AVG

(<http://>

/