



AVG Email Server Edition 2011

2011.01 (22. 9. 2010)

Copyright AVG Technologies CZ, s.r.o. All rights reserved.

RSA Data Security, Inc. MD5 Message-Digest Algorithm, Copyright (C) 1991-2, RSA Data Security, Inc. Created 1991

C-SaCzech, Copyright (c) 1996-2001 Jaromir Dolecek(dolecek@ics.muni.cz)

zlib, Copyright (c) 1995-2002 Jean-loup Gailly and Mark Adler



1.	4
2. AVG	5
2.1	5
2.2	5
2.3	5
2.4	5
2.5 MS Exchange	6
3. AVG	7
3.1	7
3.2	8
3.3	9
3.4	10
3.5	12
4. E-mail Scanner for MS Exchange Server 2007/2010	13
4.1	13
4.2 E-mail Scanner for MS Exchange(routing TA)	16
4.3 E-mail Scanner for MS Exchange(SMTP TA)	17
4.4 E-mail Scanner for MS Exchange(VSAPI)	18
4.5	20
4.6	21
4.7	22
5. E-mail Scanner for MS Exchange Server 2003	24
5.1	24
5.2 E-mail Scanner for MS Exchange(VSAPI)	27
5.3	30
5.4	31
6. AVG for Kerio MailServer	32
6.1	32
6.1.1 Antivirus	32
6.1.2	32
7. Anti-Spam	36



7.1 Anti-Spam	36
7.2 Anti-Spam	38
7.3 Anti-Spam	38
7.3.1 Anti-Spam	38
7.3.2 가	38
7.3.3	38
7.4	43
7.5 RBL	44
7.6	45
7.7	46
7.8	47
8. AVG	48
9. FAQ	50



1.

AVG Email Server Edition 2011

AVG Email Server Edition 2011

AVG Email Server Edition 2011

가 AVG Email Server Edition 2011
AVG

PC
AVG

AVG

AVG가

AVG

가

Internet Security
가

<http://>

www.avg.com



2. AVG

2.1.

AVG Email Server Edition 2011 가

- Windows 2008 Server Edition(x86 x64)
- Windows 2003 Server(x86, x64) SP1

2.2.

- MS Exchange 2003 Server
- MS Exchange 2007 Server
- MS Exchange 2010 Server
- AVG for Kerio MailServer 6.7.2

2.3.

AVG Email Server Edition 2011 :

- Intel Pentium CPU 1.5GHz
- 500MB 가 ()
- 512MB RAM

AVG Email Server Edition 2011 :

- Intel Pentium CPU 1.8GHz
- 600MB 가 ()
- 512MB RAM

2.4.

AVG Email Server가

AVG Email Server Edition 2011

Windows

- / / / 가



Server Edition	AVG File Server Edition	AVG	Email
• Email Server Edition		AVG File Server Edition / AVG/ AVG	
• AVG 8.x			
Exchange setupes.exe	-	/uninstall	
: C:\AVG4ES2K\setupes.exe /uninstall			
Lotus Domino/ Notes setupln.exe	-	/uninstall	
: C:\AVG4LN\setupln.exe /uninstall			

2.5. MS Exchange

MS Exchange 2003 Server

MS Exchange 2003 Server ():

<http://www.microsoft.com/exchange/evaluation/sp2/overview.mspx>

가

가

delete

가

MS Exchange 2007 Server ():

<http://www.microsoft.com/downloads/details.aspx?FamilyID=44c66ad6-f185-4a1d-a9ab-473c1188954c&displaylang=ko>



3. AVG

AVG
CD

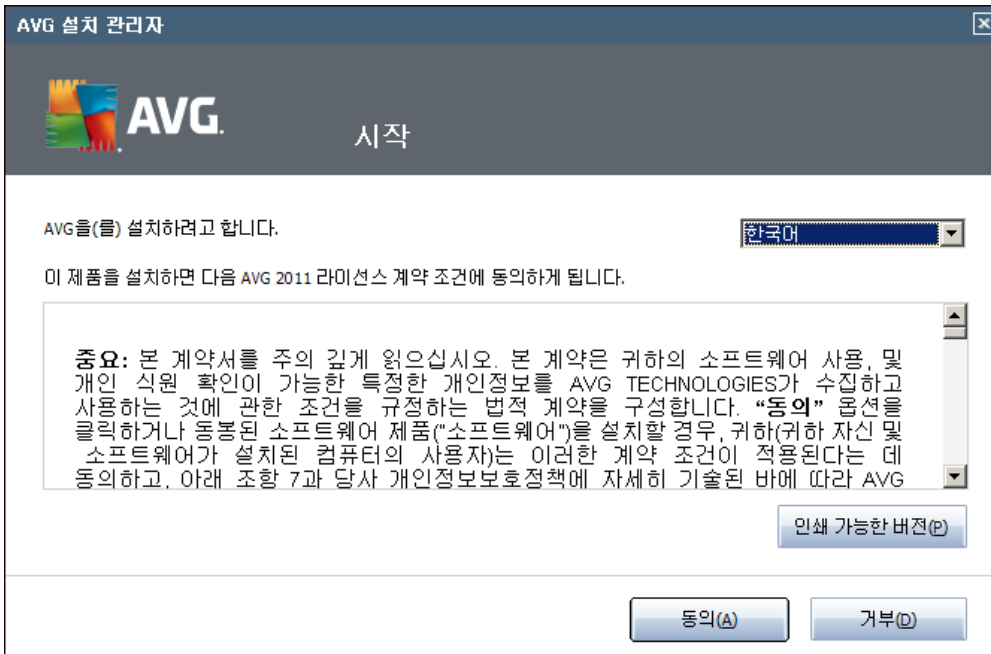
[AVG](#)

(<http://www.avg.com/download?prd=msw>)

: 64 가 (x64) , 32 (x86)

가
CD . AVG

3.1.



가


가



3.2.

AVG

AVG 설치 관리자

 라이선스 활성화

라이선스 번호:

예: 9FULL-NSDRS-KUL4L-UKSFR-L96M9-B2ALT-XWMX3

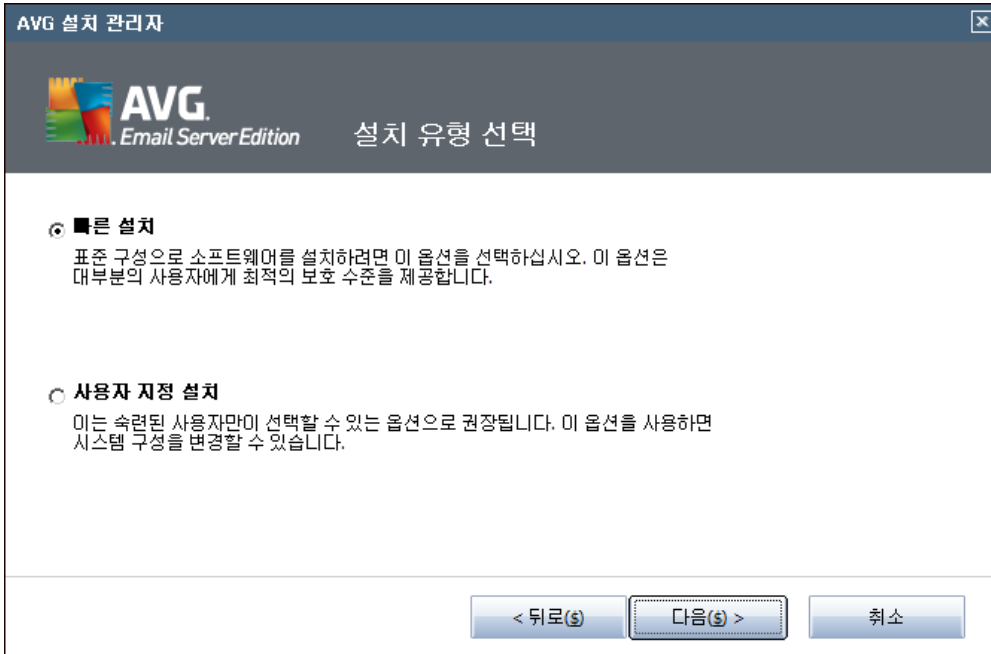
온라인으로 AVG 2011 소프트웨어를 구입한 경우 라이선스 번호가 전자 메일로 사용자에게 보내집니다. 입력 오류를 방지하려면 라이선스 번호를 전자 메일에서 잘라내어 이 화면으로 붙여 넣는 것이 좋습니다.

소매점에서 이 소프트웨어를 구입한 경우 패키지에 포함된 제품 등록 카드에 라이선스 번호가 나와 있습니다. 해당 번호를 올바르게 복사해야 합니다.

< 뒤로(s) 다음(s) > 취소



3.3.



가

AVG

AVG

AVG

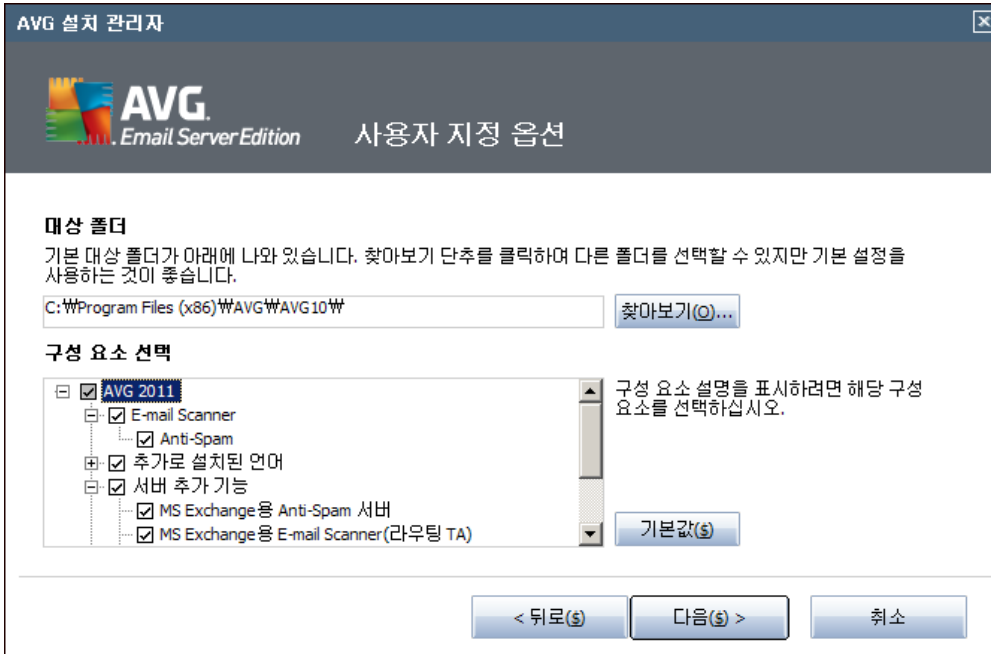
가

가

가



3.4.



C: \Program Files \AVG

AVG

가

AVG

- **AVG Remote Admin Client** - AVG DataCenter(AVG Network Edition)

- - AVG (: USB)

- 가 - AVG 가
- (가):

- **Anti-Spam Server for MS Exchange**



가

- **MS Exchange** ()

MS Exchange HUB 가

MS Exchange 2007/2010 HUB

- **MS Exchange** (SMTP)

MS Exchange SMTP

MS Exchange 2007/2010 EDGE HUB

- **E-mail Scanner for MS Exchange(VSAPI)**

가

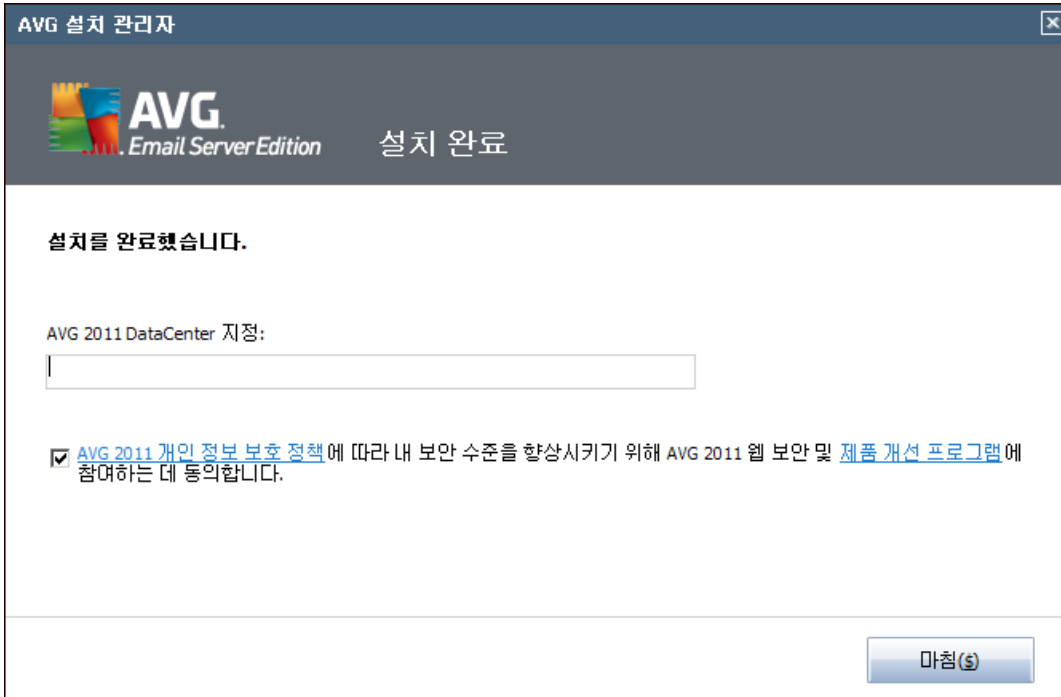
: MS Exchange



3.5.

DataCenter

AVG



AVG가

- [**E-mail Scanner for MS Exchange Server 2007/2010**](#)
- [**E-mail Scanner for MS Exchange Server 2003**](#)
- [**AVG for Kerio MailServer**](#)

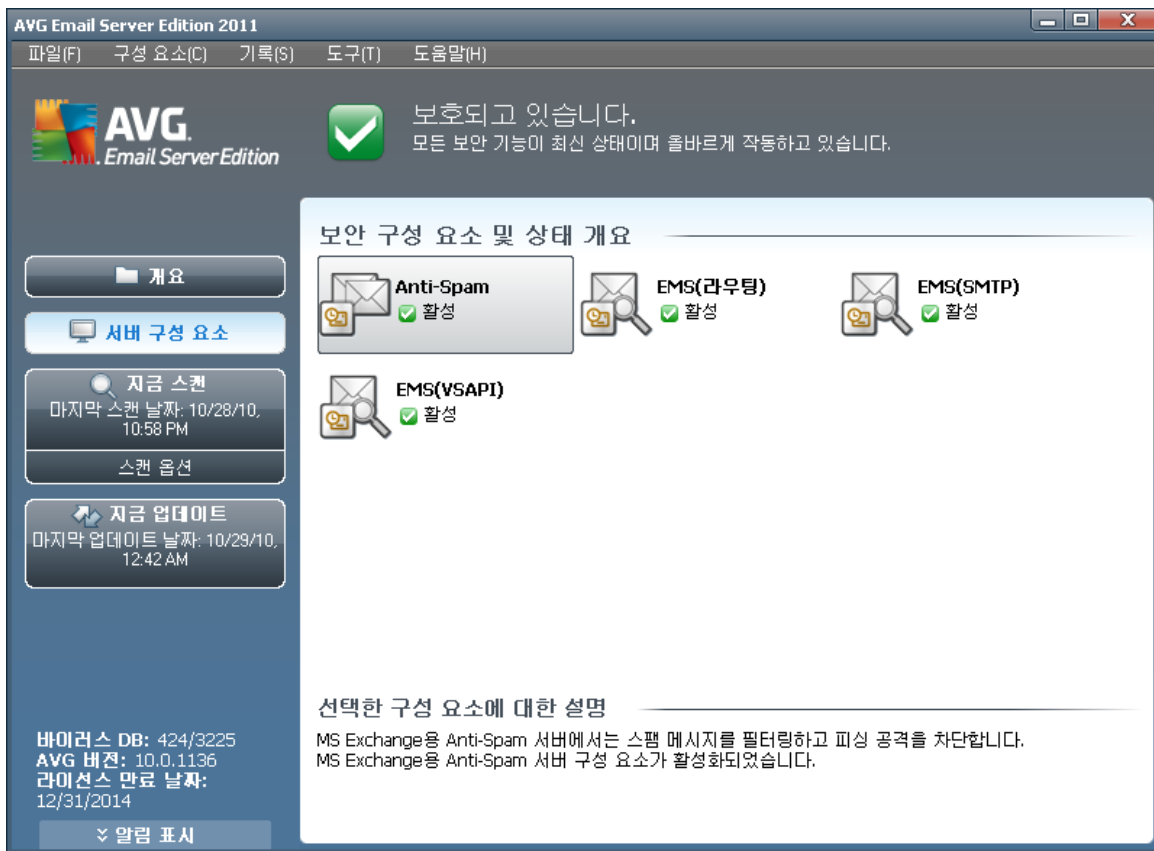


4. E-mail Scanner for MS Exchange Server 2007/2010

4.1.

AVG for MS Exchange Server 2007/2010

AVG Email Server Edition 2011



- [Anti-Spam - Anti-Spam Server for MS Exchange](#)

가

- [EMS\(\) - MS Exchange \(\)](#)

MS Exchange HUB

가

MS Exchange 2007/2010

HUB

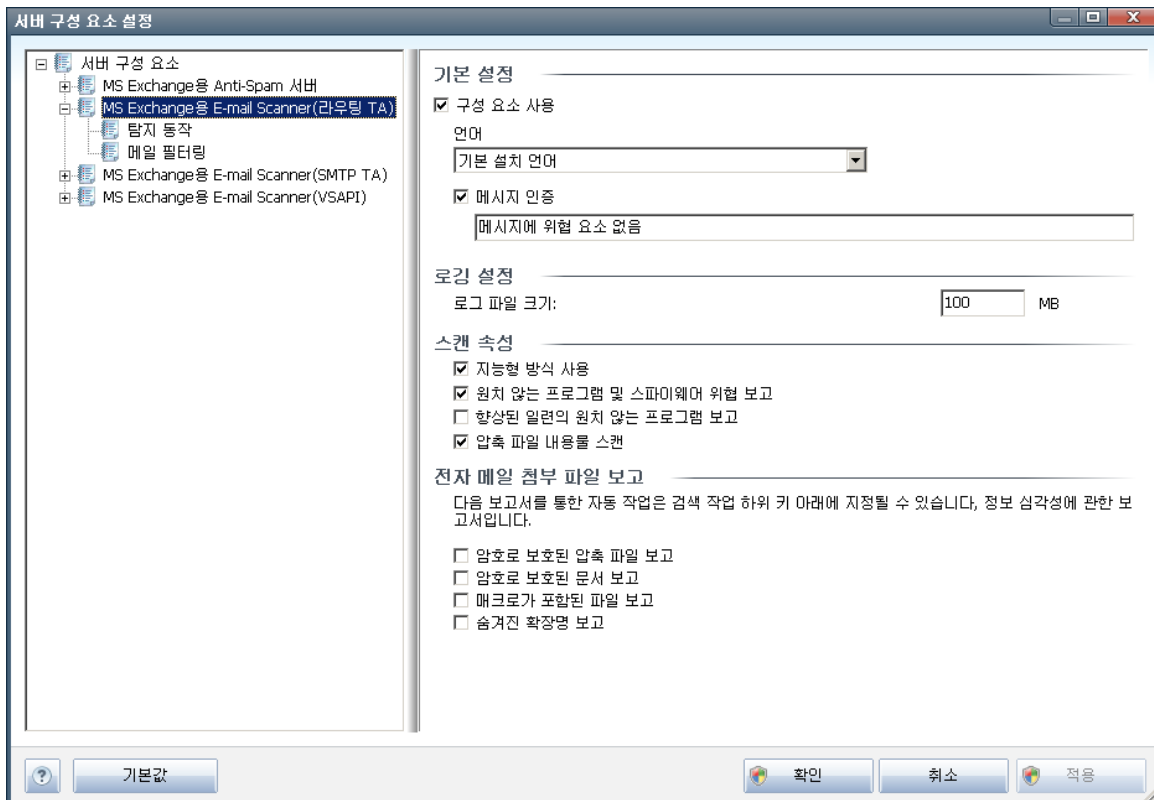


4.2. E-mail Scanner for MS Exchange(routing TA)

MS Exchange

()

E-mail Scanner for MS Exchange(routing TA)



-
-
-
-
-

가

100MB



- 가
- () 가
- : 가
- zip, rar
- [INFORMATION] 가
- ()

-
-
- 가
-
- _____
- _____

4.3. E-mail Scanner for MS Exchange(SMTP TA)

MS Exchange (SMTP)

MS

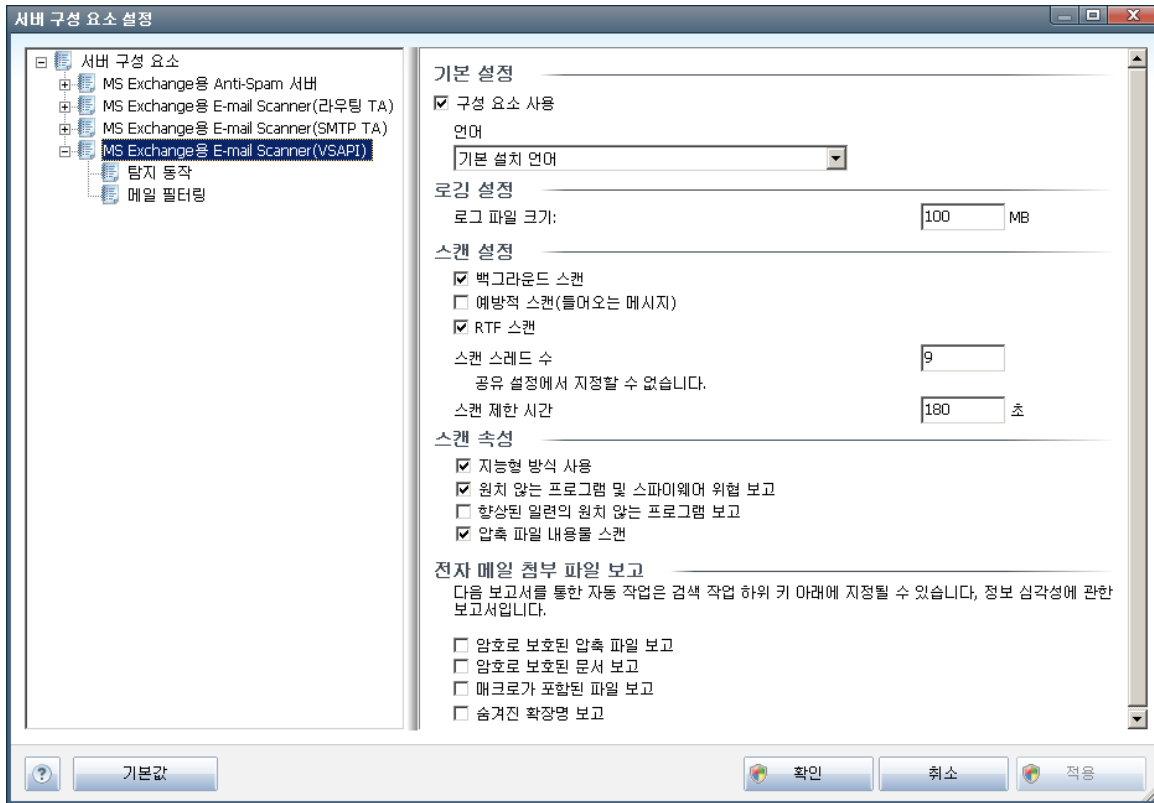
Exchange (TA)

- _____
- _____



4.4. E-mail Scanner for MS Exchange(VSAPI)

E-mail Scanner for MS Exchange(VSAPI)



- -
- -
- - 100MB
- - VSAPI 2.0/2.5
- - Exchange
- - AVG
- - AVG for Exchange Server
- - (: Microsoft Exchange



가)

- ()
VSAPI 2.0/2.5

가 Exchange
(FIFO) (30)

가 가

:

:

Outlook

가 MS

- **RTF** - RTF

- - 가

' + 1

(' + 1) 2

' 5

- () - 가
180

- -

- 가 -

- -

() 가
가 가

:



- zip, rar ()

-
-
- 가
-

Microsoft VSAPI 2.0/2.5
 . VSAPI 2.0/2.5

- <http://support.microsoft.com/default.aspx?scid=kb:en-us:328841&Product=exch2k> - Exchange
- <http://support.microsoft.com/default.aspx?scid=kb:en-us:823166> - Exchange 2003 Server 가 VSAPI 2.5

- _____
- _____

4.5.

Hub Exchange VSAPI VSAPI
 On-access Scanner
 VSAPI 가 가
 ()

:
 (Windows / **regedit**
 Enter).

**HKEY_LOCAL_MACHINE\SYSTEM\CurrentControlSet\Services\MSExchangeIS\Vir
 rusScan**



/ DWORD(32)

TransportExclusion

1

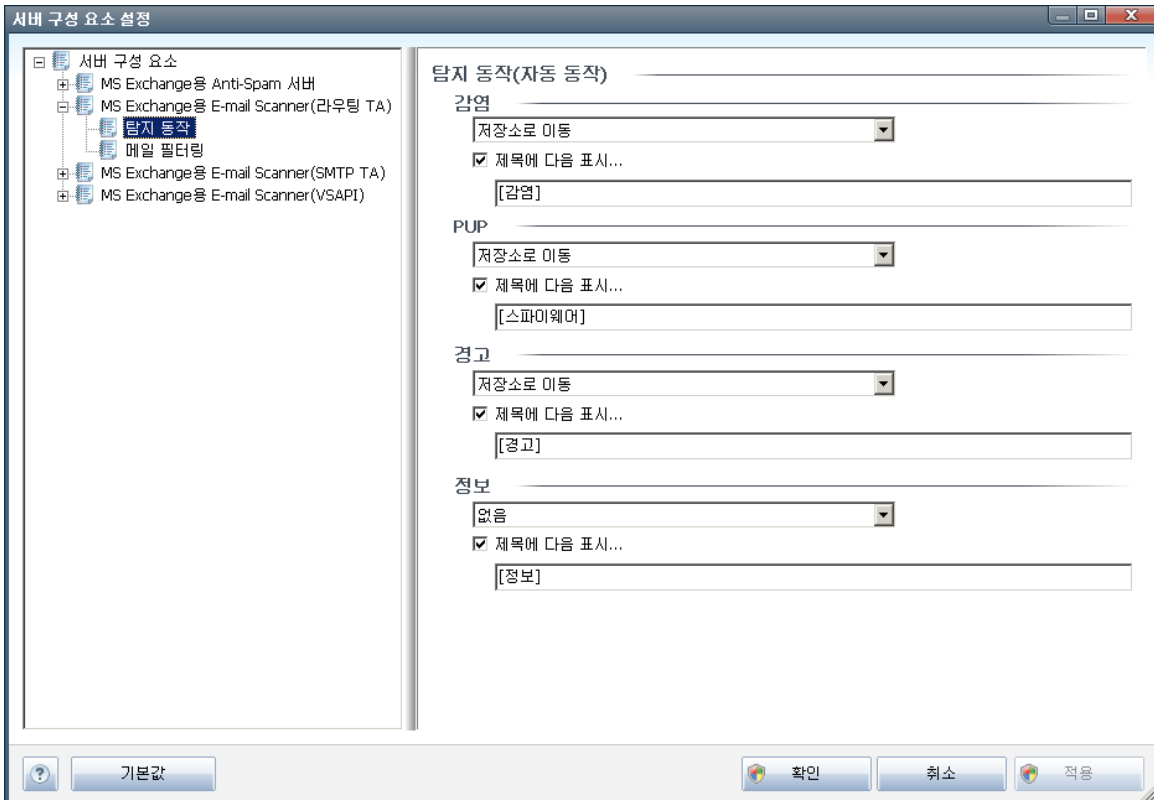
MS Exchange Server

ReloadNow

1

VSAPI On-access Scanner 가

4.6.



-
- **PUP()**
-



•

•

•

•

/ 가

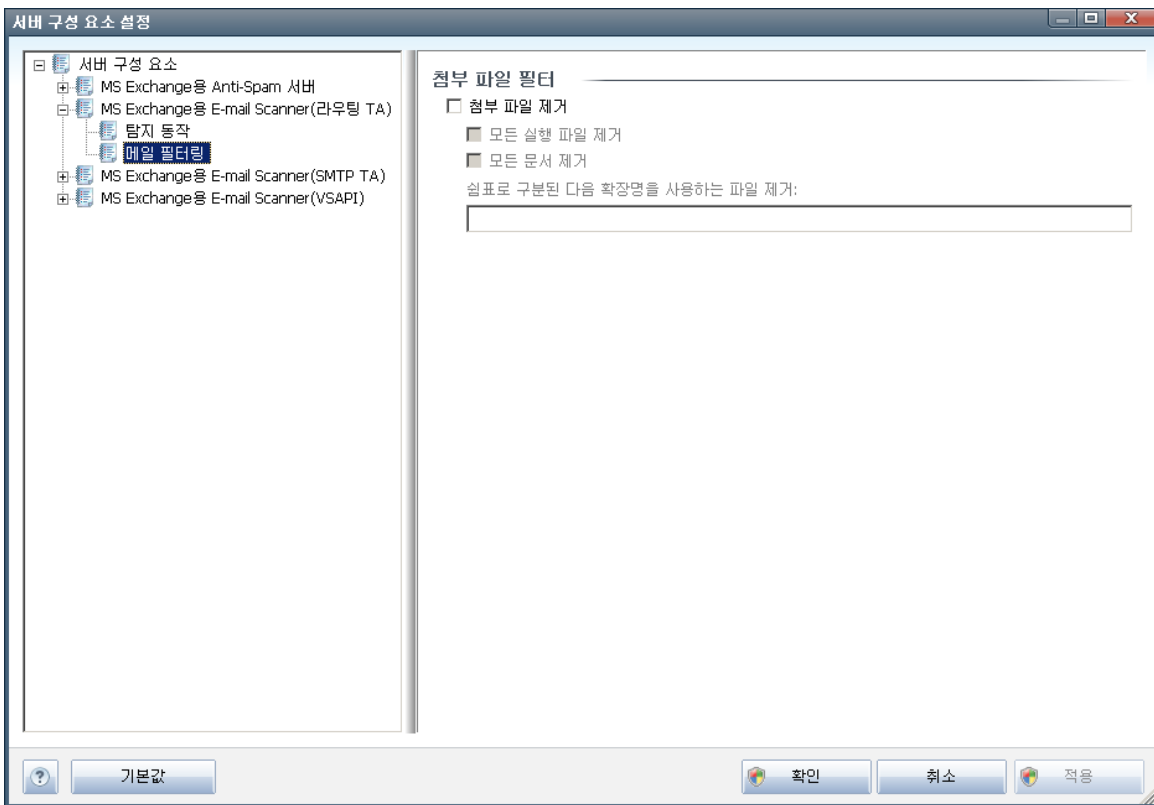
...

:

MS Exchange

(VSAPI)

4.7.



()

•

•



-
-



5. E-mail Scanner for MS Exchange Server 2003

5.1.

E-mail Scanner for MS Exchange Server 2003
2011

AVG Email Server Edition

AVG Email Server Edition 2011

파일(F) 구성 요소(C) 기록(S) 도구(T) 도움말(H)

AVG
Email Server Edition

보호되고 있습니다.
모든 보안 기능이 최신 상태이며 올바르게 작동하고 있습니다.

보안 구성 요소 및 상태 개요

Anti-Spam 활성

EMS(VSAPI) 활성

개요

서버 구성 요소

지금 스캔
마지막 스캔 날짜: 아직 스캔하지 않음

스캔 옵션

지금 업데이트
마지막 업데이트 날짜: 10/29/10, 4:14 PM

바이러스 DB: 424/3225
AVG 버전: 10.0.1153
라이선스 만료 날짜: 12/31/2014

알림 표시

선택한 구성 요소에 대한 설명

MS Exchange용 Anti-Spam 서버에서는 스팸 메시지를 필터링하고 피싱 공격을 차단합니다.
MS Exchange용 Anti-Spam 서버 구성 요소가 활성화되었습니다.

- [Anti-Spam - Anti-Spam Server for MS Exchange](#)

가

- [EMS\(VSAPI\) - E-mail Scanner for MS Exchange\(VSAPI\)](#)

가



. Anti-Spam

AVG Email Server Edition 2011

파일(F) 구성 요소(C) 기록(S) 도구(T) 도움말(H)

AVG
Email Server Edition

보호되고 있습니다.
모든 보안 기능이 최신 상태이며 올바르게 작동하고 있습니다.

MS Exchange용 E-mail Scanner(라우팅 TA) 구성 요소

MS Exchange용 E-mail Scanner(라우팅 TA)에서는 MS Exchange HUB 서버 역할을 통해 라우팅되는 모든 전자 메일 메시지를 검사합니다. 탐지되는 바이러스는 바이러스 저장소(으)로 이동되거나 완전히 제거됩니다.

활성

검사한 전자 메일 메시지 수: **0 10/20/2010, 12:08 AM 이후**
탐지된 위협: **0 10/20/2010, 12:08 AM 이후**

[스캔 결과](#), [통계 값 새로 고침](#), [통계 값 다시 설정](#)

바이러스 DB: 424/3225
AVG 버전: 10.0.1136
라이선스 만료 날짜: 12/31/2014

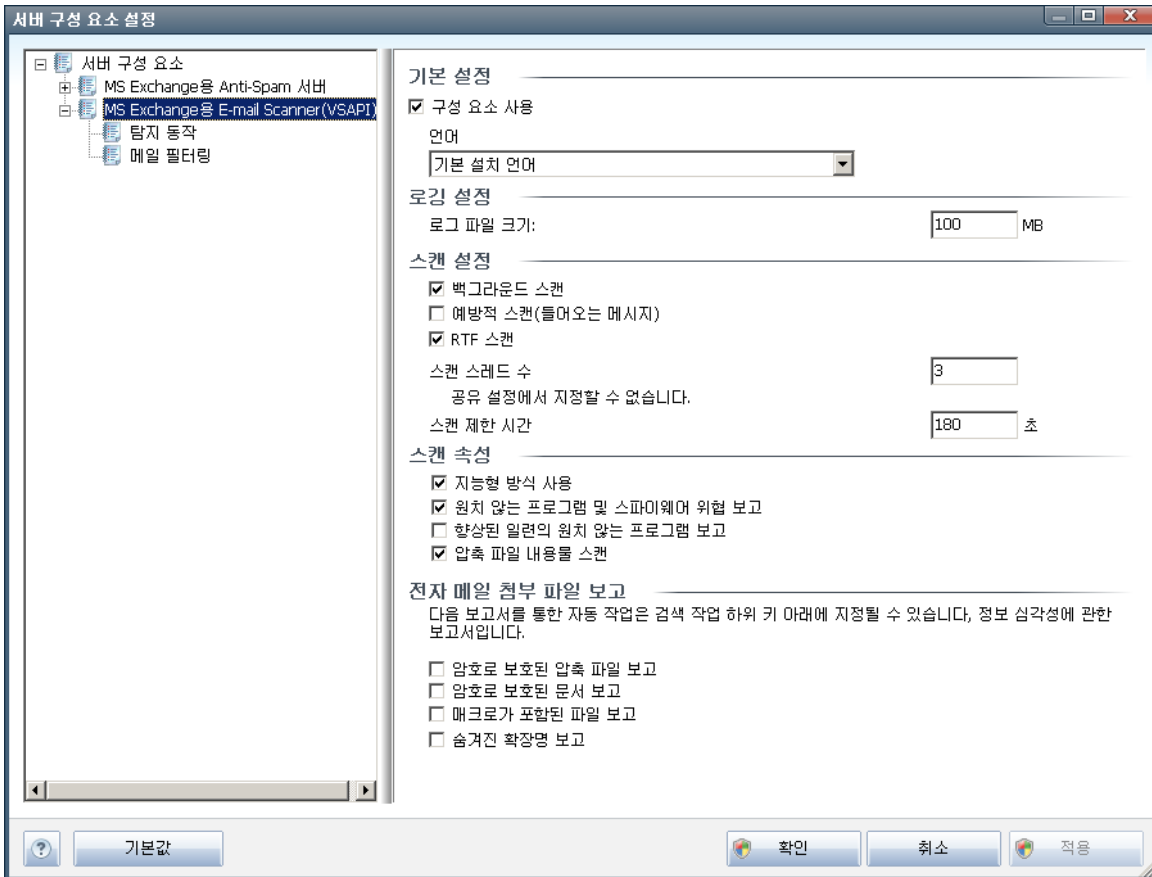
메뉴: 개요, 서버 구성 요소, MS Exchange용 E-mail Scanner(라우팅 TA), 지금 스캔, 지금 업데이트

지금 스캔: 마지막 스캔 날짜: 10/28/10, 10:58 PM
스캔 옵션

지금 업데이트: 마지막 업데이트 날짜: 10/29/10, 12:42 AM



5.2. E-mail Scanner for MS Exchange(VSAPI) E-mail Scanner for MS Exchange(VSAPI)



- -
- -
- - 100MB
- -
- - VSAPI 2.0/2.5
- - , Exchange
- - AVG
- - AVG for Exchange Server



(: Microsoft Exchange

가)

- ()
VSAPI 2.0/2.5

가 Exchange
(FIFO) (30).

가 가

:

:
Outlook

가 MS

- **RTF** - RTF
- - 가

' + 1

(' + 1) 2

' 5

- () - 가
180

- -

- 가 -

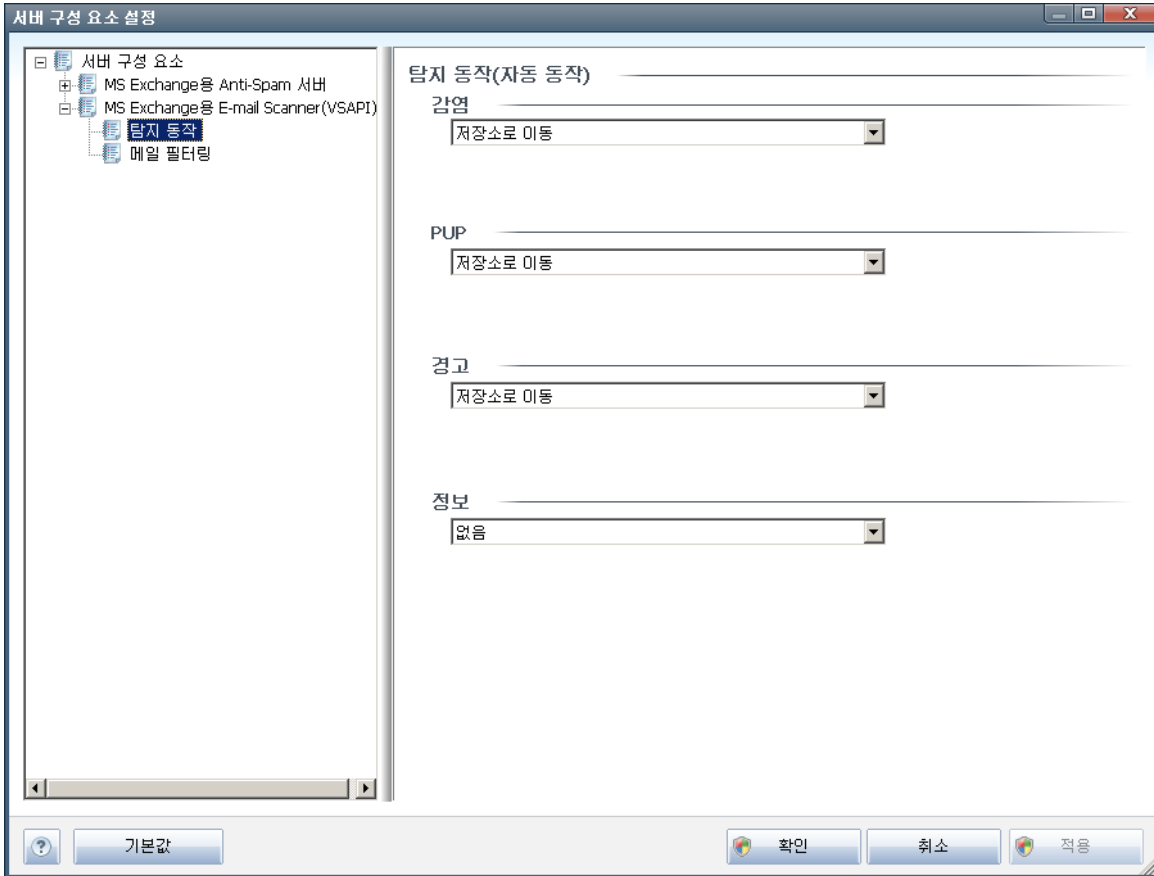
- -

() 가
가 가



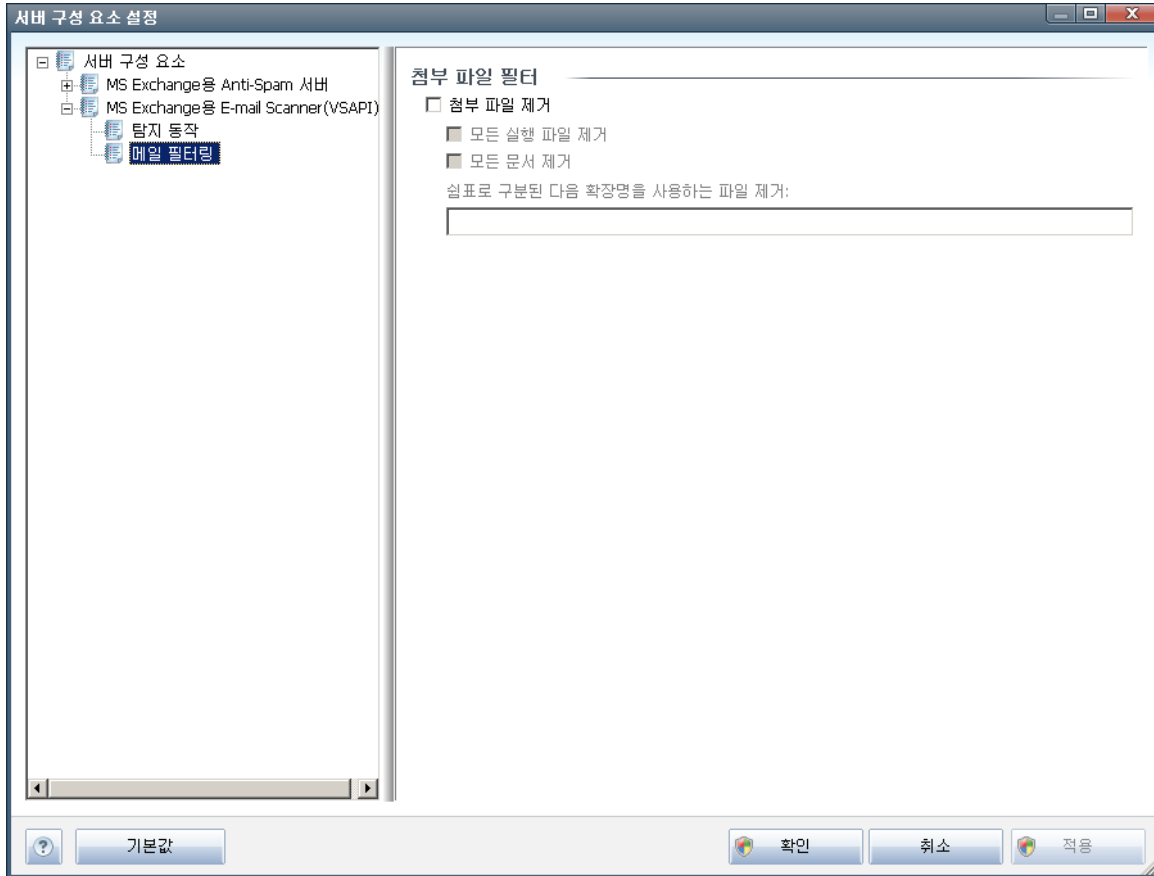
- zip, rar ()
-
-
- 가
-
- Microsoft VSAPI 2.0/2.5
• VSAPI 2.0/2.5
- <http://support.microsoft.com/default.aspx?scid=kb:en-us:328841&Product=exch2k> - Exchange
- <http://support.microsoft.com/default.aspx?scid=kb:en-us:823166> - Exchange 2003 Server 가 VSAPI 2.5
- _____
- _____

5.3.



-
- **PUP()**
-
-
-
-
-
-
-
-

5.4.



()

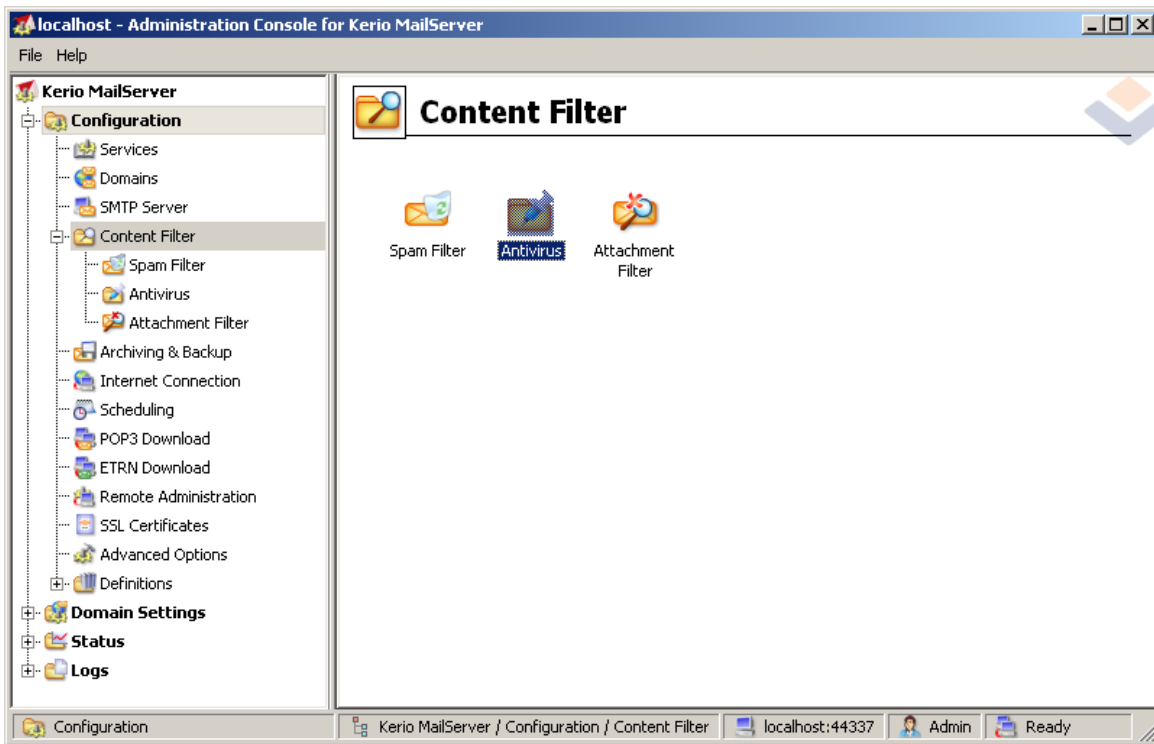
-
-
-
-



6. AVG for Kerio MailServer

6.1.

AVG Administration Console Kerio MailServer Kerio MailServer Kerio



가

가

-
- _____ ()
- _____ ()

6.1.1. Antivirus

AVG for Kerio MailServer
Antivirus
Edition

AVG Email Server



Antivirus usage

Use integrated McAfee® antivirus engine

Use external antivirus AVG Email Server Edition Options

• 가

If a virus is found in a message

Discard the message

Deliver the message with the malicious code removed

Forward the original message to administrator address:

Forward the filtered message to administrator address:

가 가

○ 가

○ 가

○

○

• (:)

If a part of message cannot be scanned (e.g. encrypted or corrupted file)

Deliver the original message with a prepended warning

Reject the message as if it was a virus (use the settings above)


○ (가)

가 가

○ 가

가

6.1.2.



Attachment Filter

Enable attachment filter

If a message attachment is blocked by this filter

The attachment will be removed from the message and the message will be delivered to the recipient

Send the sender a warning informing that the attachment was not delivered

Forward the original message to administrator address:

Forward the filtered message to administrator address:

Type	Content	Action	Description
<input type="checkbox"/>	File name *.exe	Block	EXE files
<input checked="" type="checkbox"/>	File name *.com	Block	COM files
<input checked="" type="checkbox"/>	File name *.scr	Block	Screenshot files
<input checked="" type="checkbox"/>	File name *.bat	Block	BAT files

Add...
Edit...
Remove

Kerio MailServer

가

가

4

가



- MIME
- *.doc.* ' .doc
- . 가
- () (
- 가 ...



-
- MIME)



7. Anti-Spam

7.1. Anti-Spam

The screenshot shows the AVG Email Server Edition 2011 interface. At the top, there is a menu bar with '파일(F)', '구성 요소(C)', '기록(S)', '도구(T)', and '도움말(H)'. Below the menu bar, the AVG logo and 'Email Server Edition' are displayed. A green checkmark icon indicates that the system is protected and all security features are running. The main content area is titled 'MS Exchange용 Anti-Spam 서버 구성 요소'. It includes a description of the MS Exchange용 Anti-Spam 서버, which checks and filters incoming email messages. A '활성' (Active) status is shown with a green checkmark. Below this, there is a table of configuration details:

구성 요소 버전:	6.1.2
마지막 데이터베이스 업데이트 날짜:	Tuesday, November 25, 2008, 9:01 AM
검사한 전자 메일 메시지 수:	0 10/29/2010, 12:34 AM 이후
검색된 스팸 메시지 수:	0 10/29/2010, 12:34 AM 이후
발견된 피싱 전자 메일:	0 10/29/2010, 12:34 AM 이후

At the bottom of the configuration area, there are links for '스캔 결과', '통계 값 새로 고침', and '통계 값 다시 설정'. There are also '설정' (Settings) and '뒤로' (Back) buttons.

Anti-Spam

(MS Exchange Anti-Spam Server 가) 가

가 :

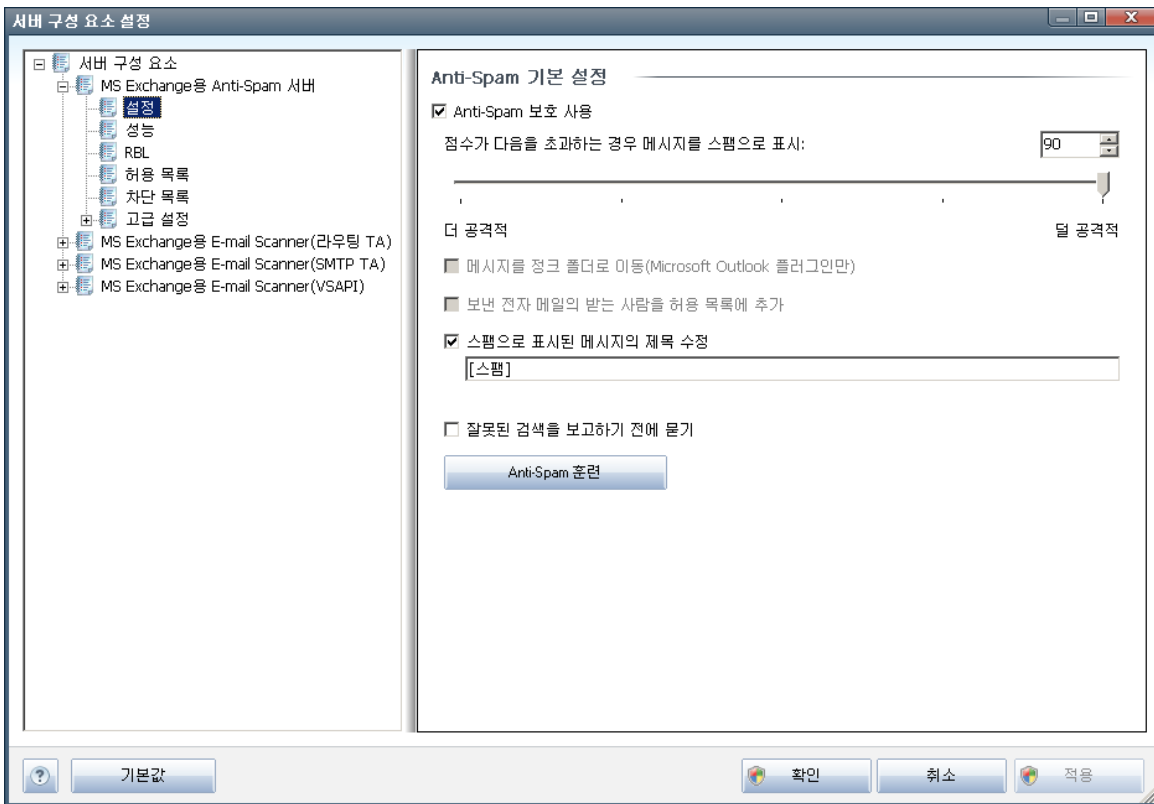
Anti-Spam



7.2. Anti-Spam

Anti-Spam

7.3. Anti-Spam



Anti-Spam

Anti-Spam

Anti-Spam

가

)

. 50
가

90

(,

- 90 -

가

(_____



). 가

• 80 ~ 89 - 가

가

• 60 ~ 79 - 가

. 가

• 50 ~ 59 -

•

AVG

•

AVG

가

AVG

AVG

: AVG Email Server Edition 2011

Anti-Spam
가

Anti-Spam

7.3.1. Anti-Spam

Anti-spam

가

가



- *Express, The Bat!, Mozilla Thunderbird}*

(MS Outlook, Outlook

- **EML**

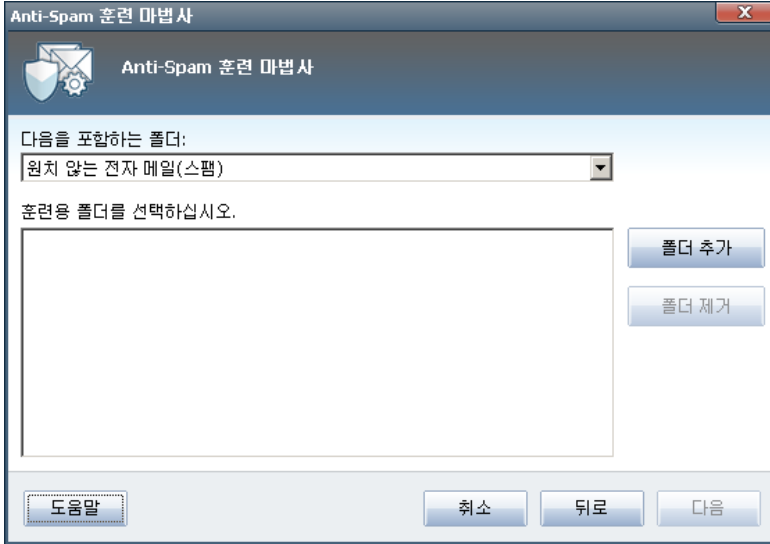
.eml

EML

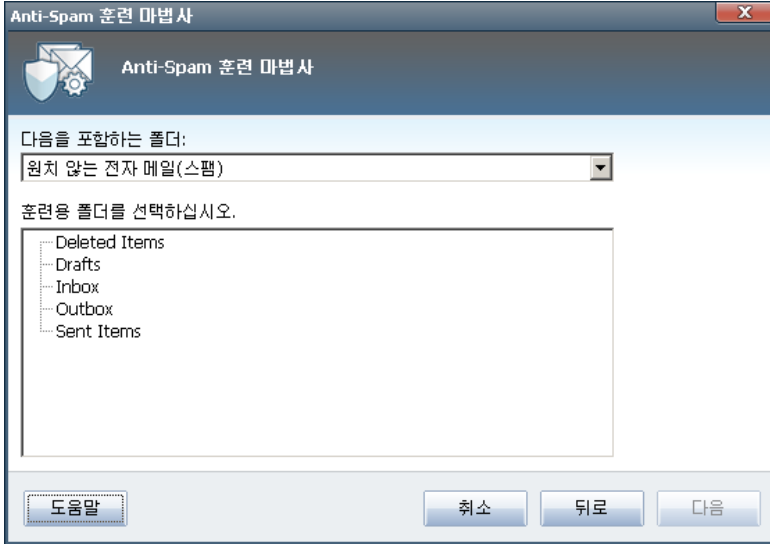
()

7.3.2. 가

EML



가 .eml () 가
가 ()가
가



: Microsoft Office Outlook
가

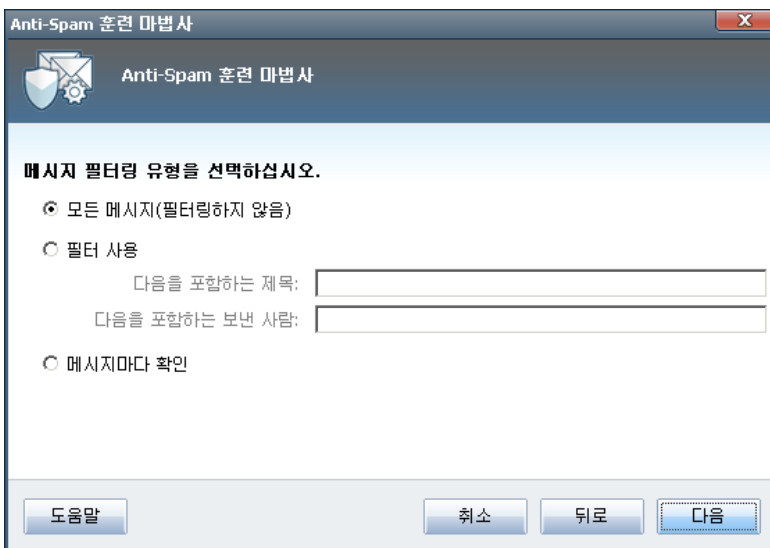
MS Office Outlook

()가

()가

가

7.3.3.





가

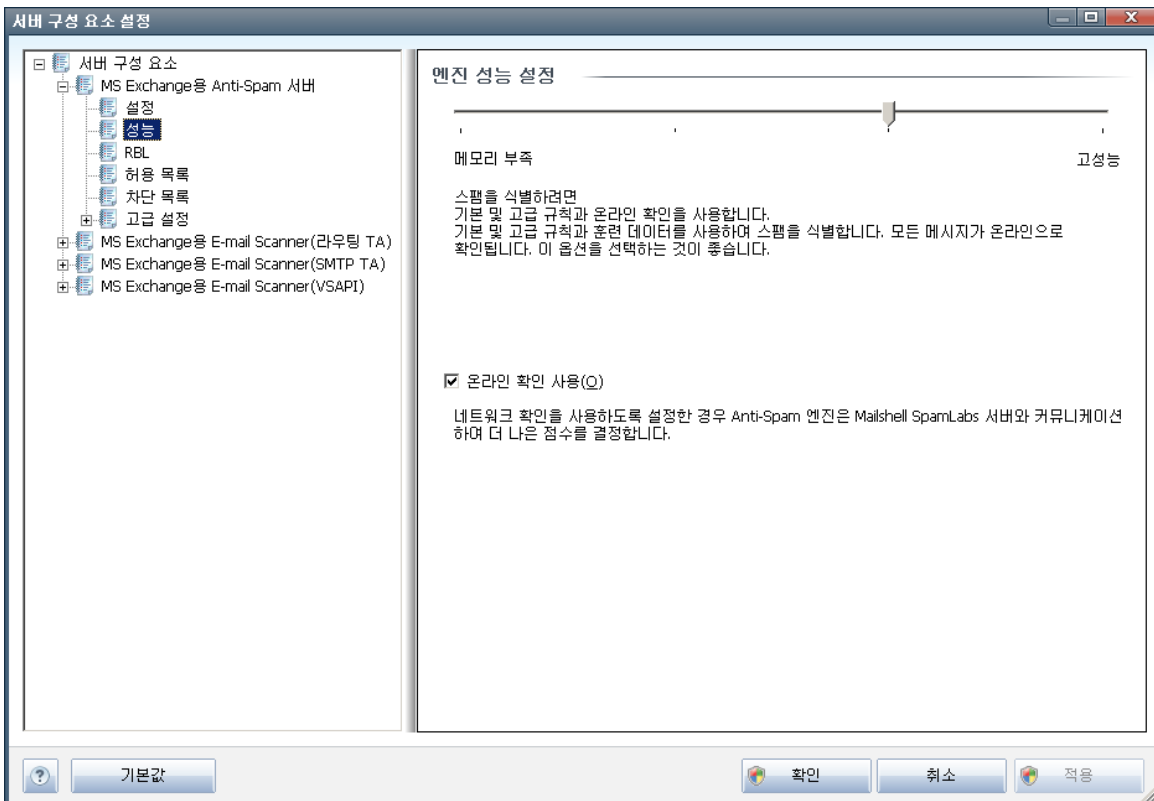
가

!:
!

가

가

7.4.



(

)

Anti-Spam



• , _____ , _____ , IP ,

[Mailshell](#)

[Mailshell](#)

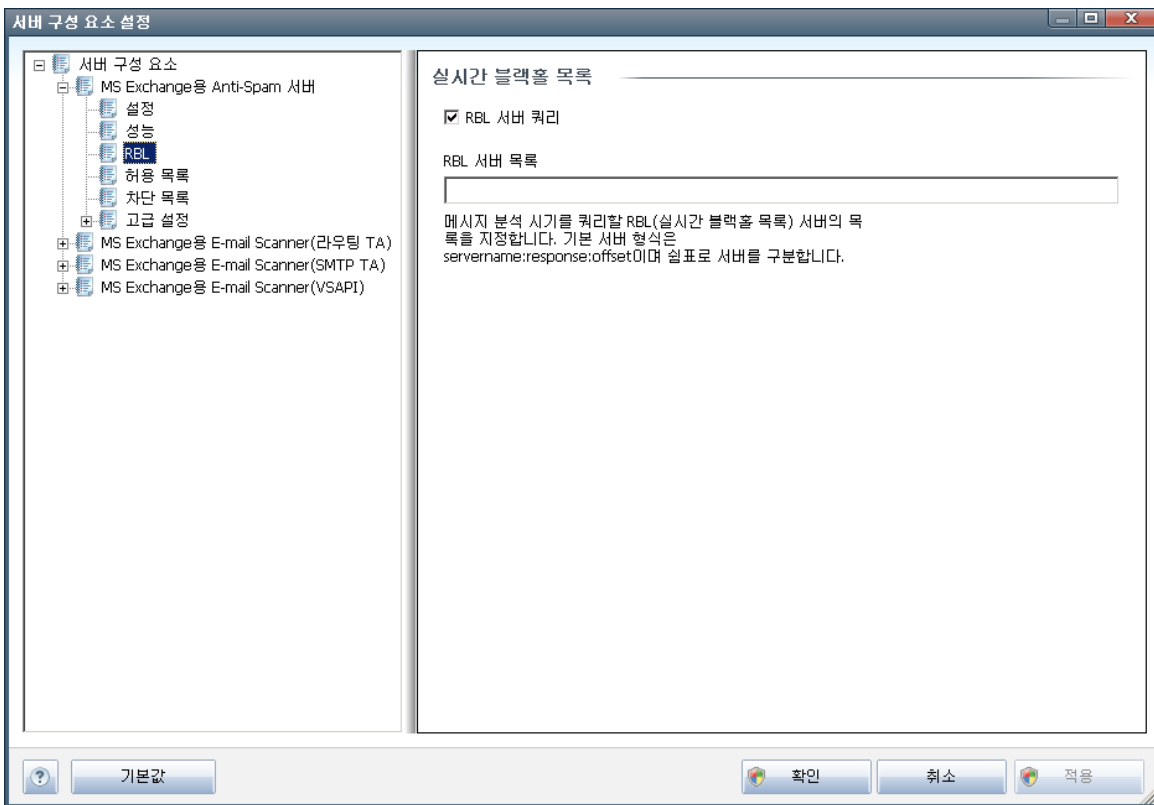
가

가
가

7.5. RBL

RBL

가



RBL

RBL()
가 DNS .

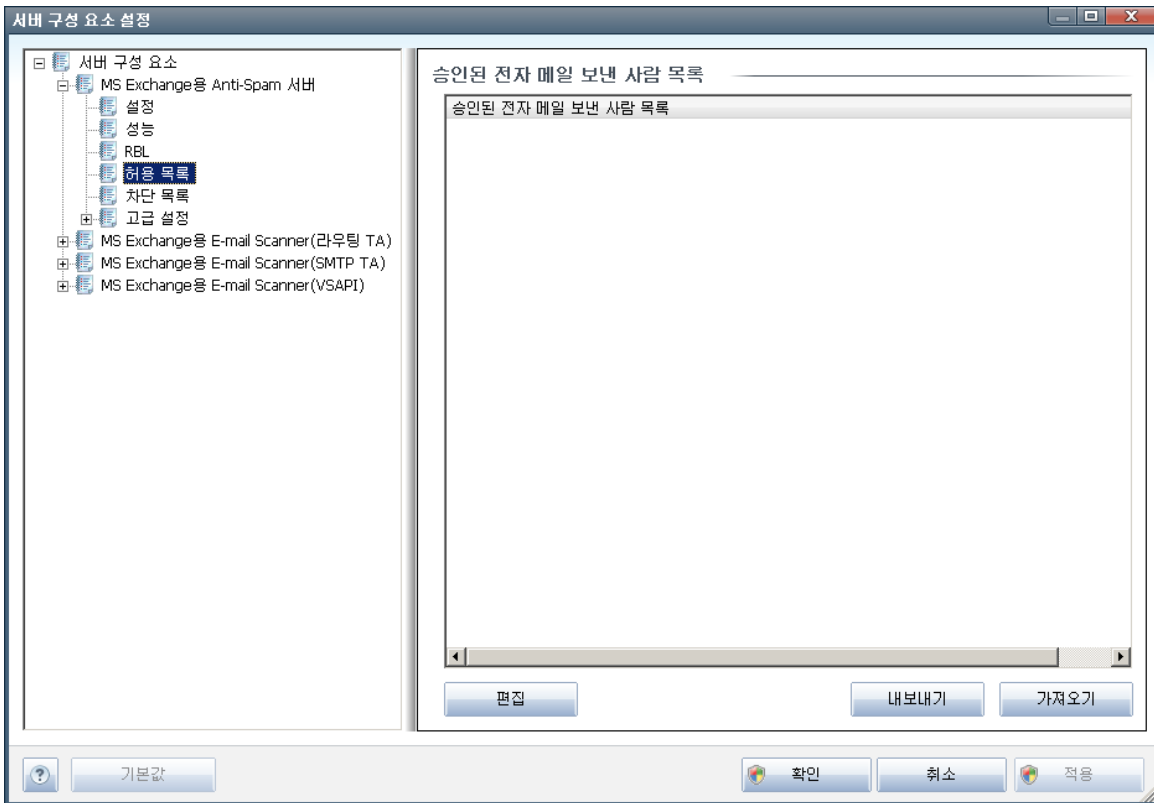
가 RBL



RBL 가 Anti-Spam

RBL 가 RBL 가 2 RBL
 가 : RBL 가

7.6.



()

가 (: avg.com)

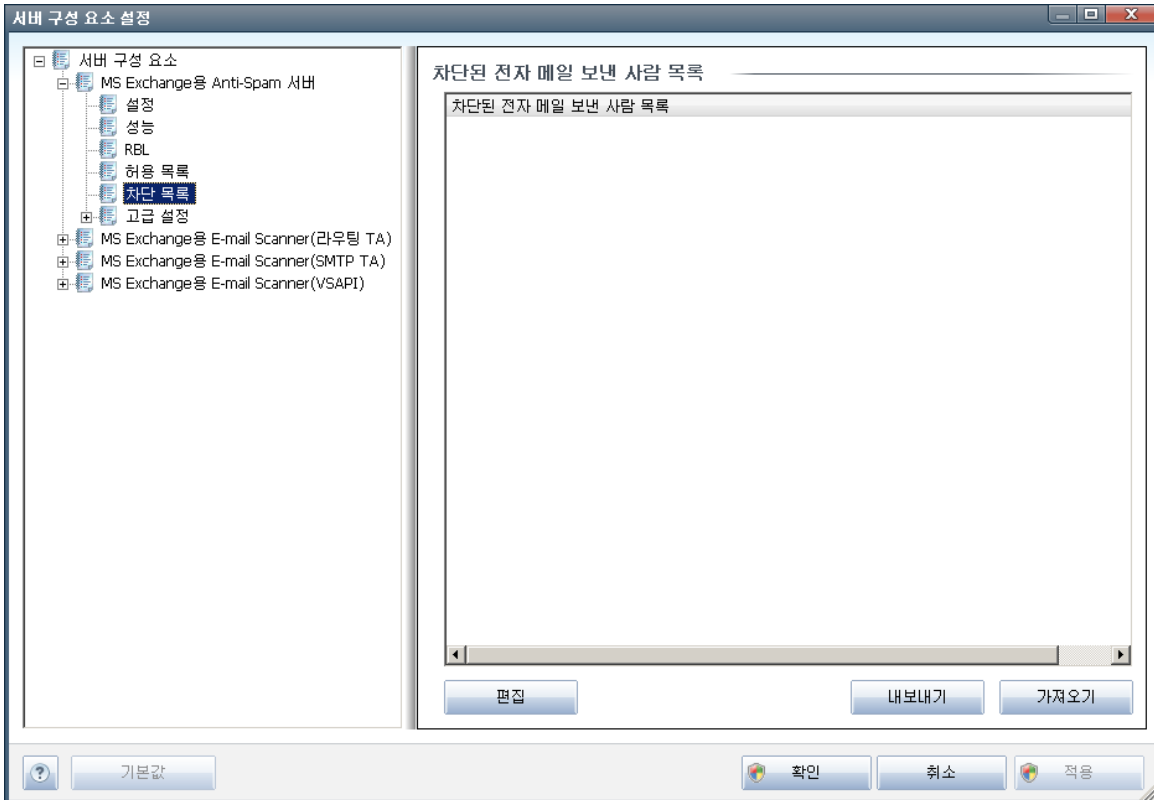
/

가



- 가 (,) 가
- 가 - 가 (; Windows) () WAB 가 (; Microsoft Office Outlook)
- -

7.7.



()

spammingcompany.com) (: /



- / 가 .
- 가 - 가
- (,) .
- 가 - 가 (; ,) WAB 가 (; ,) Windows Microsoft Office Outlook
- - .

7.8.

Anti-Spam 가 가

- - , LegitRepute
- - , 가
- - , 가 , IP, IP, 가,
- **RBL** - RBL , , IP
- - , ,



8. AVG

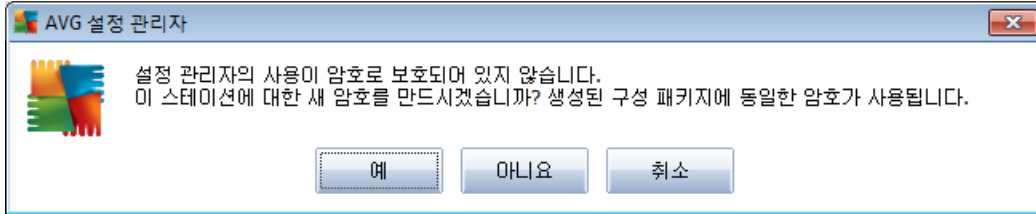
AVG (: USB AVG)

AVG Windows

/ AVG 2011/ AVG



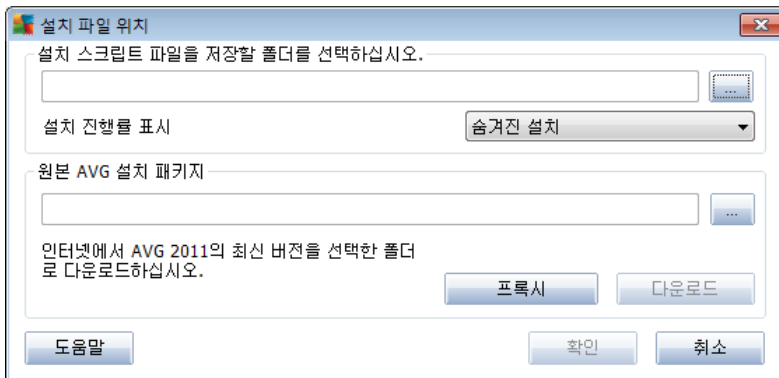
- **AVG**
AVG
AVG
- **AVG**
AVG (.pck)
- **AVG**
AVG (.pck) AVG
- **AVG**
AVG AVG (.pck)
가



AVG

- AVG

AVG



○ - 가

○ -

○ - 가

가 AVG
AVG

AVG

가 가 (). **AvgSetup.bat**
AVG가 **AvgSetup.bat**



9. FAQ

AVG
www.avg.com)

FAQ

가

AVG

(<http://>

/