



AVG Email Server Edition 2012

2012.04 (1/4/2012)

Copyright AVG Technologies CZ, s.r.o. All rights reserved.

1991 RSA Data Security, Inc. MD5 Message- Digest Algorithm, Copyright (C) 1991- 2, RSA Data Security, Inc. Created
C- SaCzech , Copyright (c) 1996- 2001 Jaromir Dolecek(dolecek@ics.muni.cz)
zlib, Copyright (c) 1995- 2002 Jean- loup Gailly and Mark Adler



1.	4
2. AVG	5
2.1	5
2.2	5
2.3	5
2.4	5
2.5 MS Exchange	6
3. AVG	7
3.1	7
3.2	8
3.3	9
3.4	-	10
3.5	11
4. E- mail Scanner for MS Exchange Server 2007/2010	13
4.1	13
4.2 E- mail Scanner for MS Exchange(routing TA)	16
4.3 E- mail Scanner for MS Exchange(SMTP TA)	17
4.4 E- mail Scanner for MS Exchange(VSAPI)	18
4.5	20
4.6	21
4.7	22
5. E- mail Scanner for MS Exchange Server 2003	23
5.1	23
5.2 E- mail Scanner for MS Exchange(VSAPI)	26
5.3	28
5.4	29
6. AVG for Kerio MailServer	31
6.1	31
6.1.1 Antivirus	31
6.1.2	31
7. Anti- Spam	35



7.1 Anti- Spam	35
7.2 Anti- Spam	37
7.3 Anti- Spam	37
7.3.1 Anti- Spam	37
7.3.2 가	37
7.3.3	37
7.4	41
7.5 RBL	42
7.6	43
7.7	44
7.8 가	45
8. AVG	46
9. FAQ	49



1.

AVG Email Server Edition 2012

AVG Email Server Edition 2012

AVG Email Server Edition 2012

AVG
Edition 2012

AVG

가

AVG Email Server
AVG

AVG

AVG가

:

가
가

Internet Security

<http://www.avg.com>

AVG



2. AVG

2.1.

AVG Email Server Edition 2012 가

- Windows 2008 Server Edition(x86 x64)
- Windows 2003 Server(x86, x64) SP1

2.2.

- MS Exchange 2003 Server
- MS Exchange 2007 Server
- MS Exchange 2010 Server
- AVG for Kerio MailServer – 6.7.2

2.3.

AVG Email Server Edition 2012 :

- Intel Pentium CPU 1.5GHz
- 500MB 가 ()
- 512MB RAM

AVG Email Server Edition 2012 :

- Intel Pentium CPU 1.8GHz
- 600MB 가 ()
- 512MB RAM

2.4.

AVG Email Server가

AVG Email Server Edition 2012
Windows

- / / / 가
AVG



3. AVG

AVG

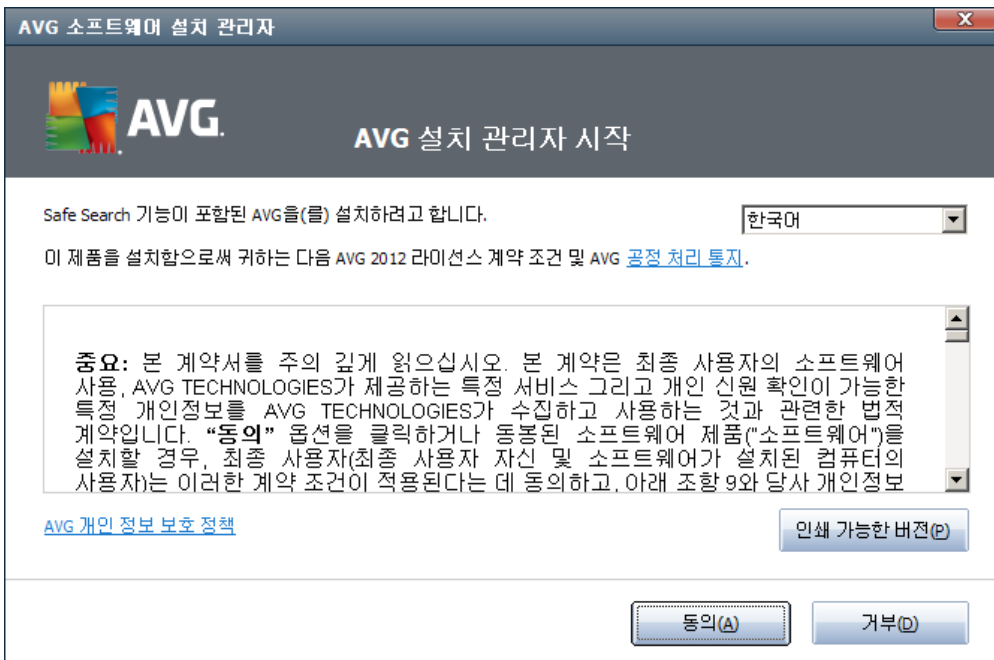
CD

[AVG](http://www.avg.com/download?prd=msw) (<http://www.avg.com/download?prd=msw>)

: (x64 가) , 32 (x86) 64

가
CD . AVG

3.1.



가


가



3.2.

AVG

AVG 소프트웨어 설치 관리자

 라이선스 활성화

라이선스 번호:

예: IQNP6-9BCA8-PUQU2-A5HCK-GP338L-93OCB

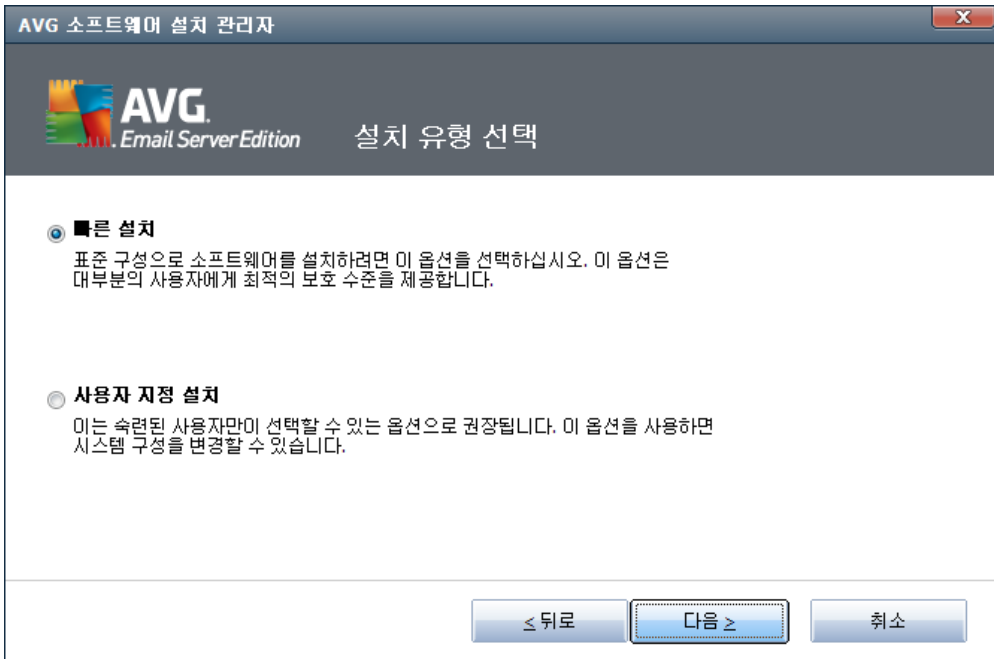
온라인으로 AVG 2012 소프트웨어를 구입한 경우 라이선스 번호가 전자 메일로 사용자에게 보내집니다. 입력 오류를 방지하려면 라이선스 번호를 전자 메일에서 잘라내어 이 화면으로 붙여 넣는 것이 좋습니다.

소매점에서 이 소프트웨어를 구입한 경우 패키지에 포함된 제품 등록 카드에 라이선스 번호가 나와 있습니다. 해당 번호를 올바르게 복사해야 합니다.

< 뒤로 다음 > 취소



3.3.



가

AVG

가

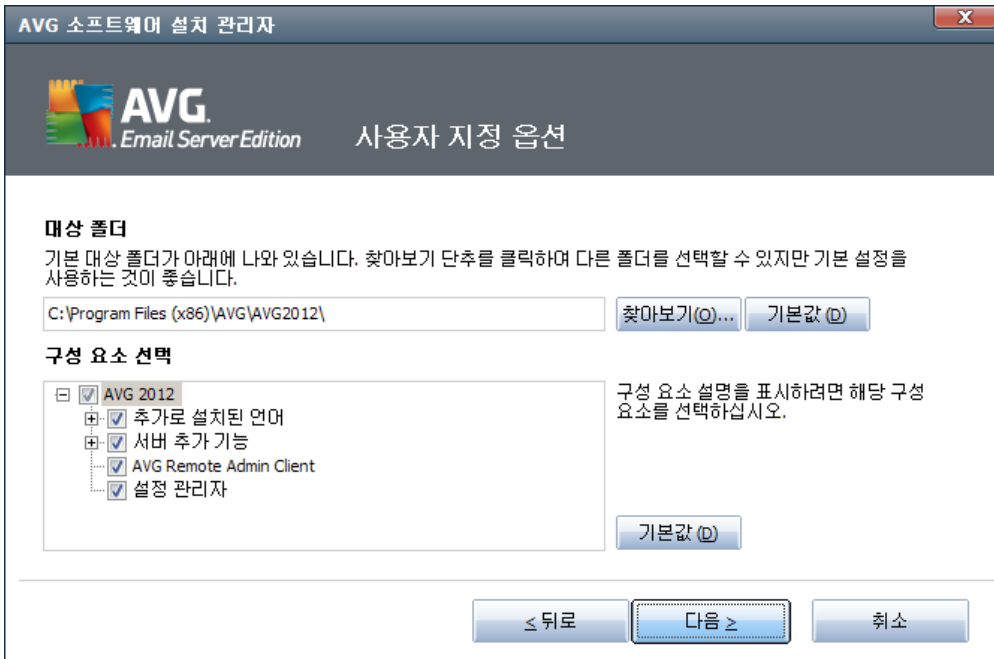
AVG

AVG

가
가



3.4.



AVG C:
Program Files

AVG
가

AVG

- **AVG Remote Admin Client** - AVG AVG DataCenter(AVG Network Edition)

- -AVG (: USB)

- 가 -AVG 가

(가):

- **MS Exchange Anti-Spam**

가



- **MS Exchange** ()
 MS Exchange HUB 가
 MS Exchange 2007/2010 HUB
- **MS Exchange (SMTP)**)
 MS Exchange SMTP
 MS Exchange 2007/2010 EDGE HUB
- **E-mail Scanner for MS Exchange(VSAPI)**
 가
 : MS Exchange

3.5.

AVG DataCenter

AVG 소프트웨어 설치 관리자

AVG
Email Server Edition
설치 완료

AVG 2012을(를) 설치해 주셔서 감사합니다.

AVG Data Center 지정:

[개인 정보 보호 정책](#)에 따라 내 보안 수준을 향상시키기 위해 [제품 개선 프로그램](#)에 참여하는 데 동의합니다.
(AVG에서는 개인 식별이 가능한 어떠한 정보도 저장하지 않으며, 귀하에게 어떤 식으로든 연락을 드리지 않습니다.)

AVG가



- [*E-mail Scanner for MS Exchange Server 2007/2010*](#)
- [*E-mail Scanner for MS Exchange Server 2003*](#)
- [*AVG for Kerio MailServer*](#)

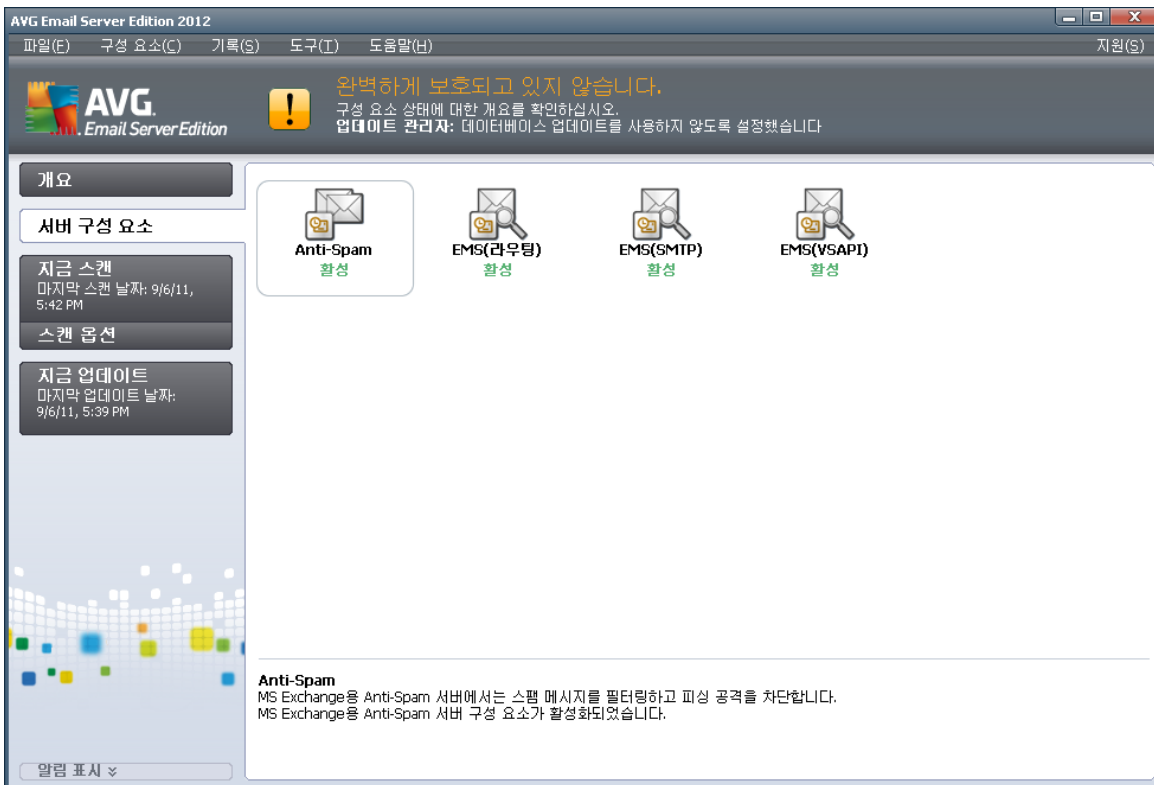


4. E- mail Scanner for MS Exchange Server 2007/2010

4.1.

AVG for MS Exchange Server 2007/2010

AVG Email Server Edition 2012



- [Anti-Spam - MS Exchange Anti-Spam](#)

가

- [EMS\(\) - MS Exchange \(\)](#)

MS Exchange HUB

가

MS Exchange 2007/2010

HUB

- [EMS\(SMTP\) - MS Exchange \(SMTP \)](#)



MS Exchange SMTP

MS Exchange 2007/2010

EDGE HUB

- [EMS\(VSAPI\) - E-mail Scanner for MS Exchange\(VSAPI\)](#)

가

: 가 VSAPI Hub Exchange

. Anti-Spam

AVG Email Server Edition 2012

파일(F) 구성 요소(C) 기록(S) 도구(T) 도움말(H) 지원(S)

AVG Email Server Edition

완벽하게 보호되고 있지 않습니다.
 구성 요소 상태에 대한 개요를 확인하십시오.
업데이트 관리자: 데이터베이스 업데이트를 사용하지 않도록 설정했습니다

개요

서버 구성 요소

MS Exchange용 E-mail Scanner(VSAPI)

지금 스캔
 마지막 스캔 날짜: 9/6/11, 5:42 PM

스캔 옵션

지금 업데이트
 마지막 업데이트 날짜: 9/6/11, 5:39 PM

MS Exchange용 E-mail Scanner(VSAPI) 구성 요소

MS Exchange용 E-mail Scanner(VSAPI)에서는 사용자의 사서함에 저장되어 있는 모든 전자 메일 메시지를 검사합니다. 탐지되는 바이러스는 바이러스 저장소(으)로 이동되거나 완전히 제거됩니다.

활성

최종 날짜: 9/6/2011, 5:37 PM
 검사한 전자 메일 부분: 802

탐지된 위협:	0	검색된 PUP:	0
검색된 감염:	0	검색된 경고:	0
바이러스 저장소로 이동:	0		
삭제됨:	0		
무시됨:	0		

[스캔 결과](#), [통계 값 새로 고침](#), [통계 값 다시 설정](#)

알림 표시 ▼

전체

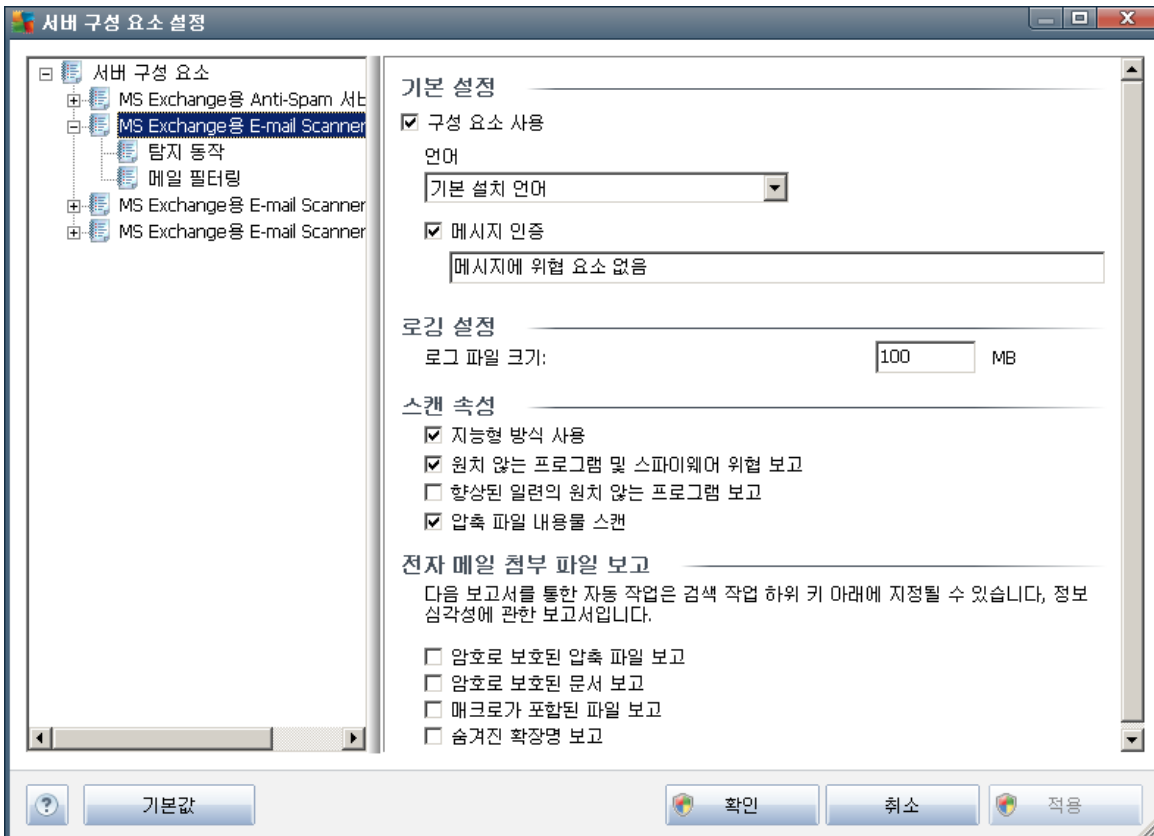
뒤로



4.2. E-mail Scanner for MS Exchange(routing TA)

MS Exchange ()

E-mail Scanner for MS Exchange(routing TA)



-
-
-
-
-

가

100MB



- 가
- 가
- (가) , 가 가
- zip, rar
- [INFORMATION] 가 () .
- 가
- 가
- 가
- 가
- 가
- 가

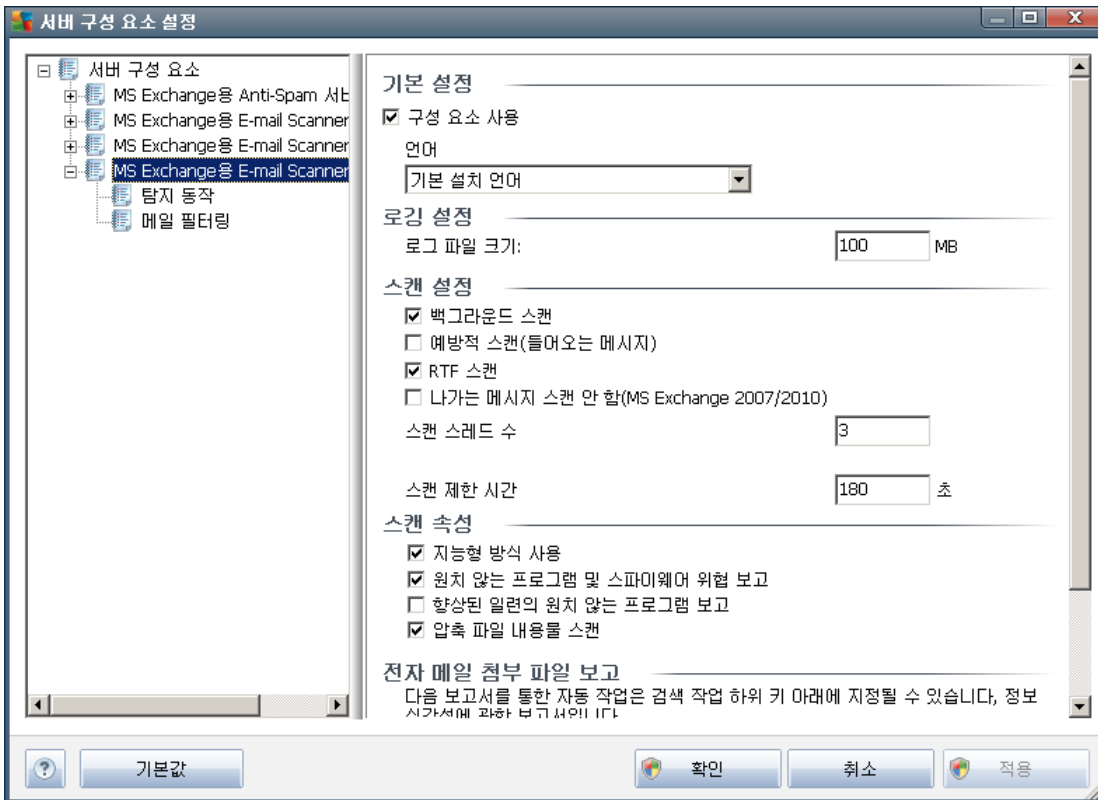
4.3. E- mail Scanner for MS Exchange(SMTP TA)

MS Exchange (SMTP) MS Exchange (TA)

- 가
- 가



4.4. E-mail Scanner for MS Exchange(VSAPI) E-mail Scanner for MS Exchange(VSAPI)



- -
- -
- - 100MB
- - VSAPI 2.0/2.5
- Exchange AVG
- AVG for Exchange Server
- (: Microsoft Exchange 가)



- ()
VSAPI 2.0/2.5

가 Exchange
(30). 가 가 (FIFO)

:

:

가 MS Outlook

- **RTF** - RTF
- 가
' +1
(' +1) 2
' 5

- , - 가 ()
180

- - 가
- - 가

(가) , 가
가 :

- - zip, rar

().

-



-
-
-

가

Microsoft VSAPI 2.0/2.5
 . VSAPI 2.0/2.5

- <http://support.microsoft.com/default.aspx?scid=kb;en-us;328841&Product=exch2k> - Exchange
- <http://support.microsoft.com/default.aspx?scid=kb;en-us;823166> - Exchange 2003 Server 가 VSAPI 2.5

-
-

4.5.

Hub Exchange VSAPI VSAPI On-access Scanner

VSAPI 가 가 ()

(Windows / **regedit** Enter).

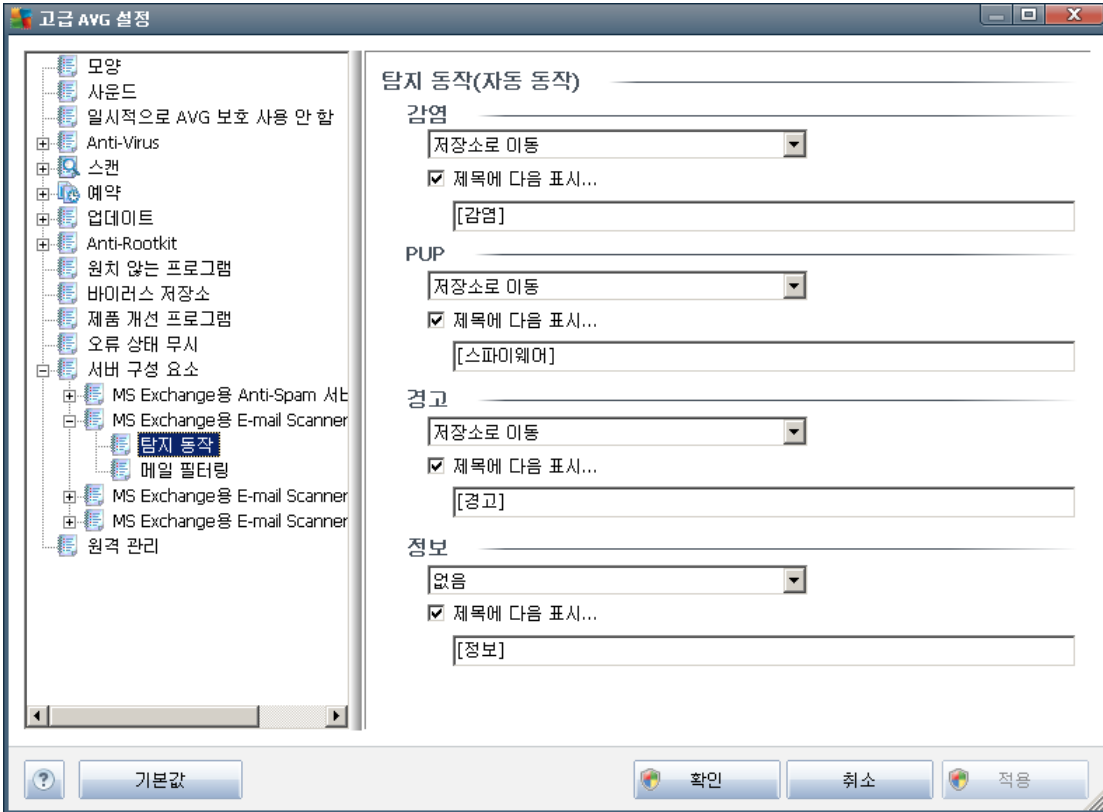
HKEY_LOCAL_MACHINE\SYSTEM\CurrentControlSet\Services\MSExchange\IS\VirusScan
/DWORD(32

) **TransportExclusion**
 1

MS Exchange Server **ReloadNow** 1

VSAPI On-access Scanner 가

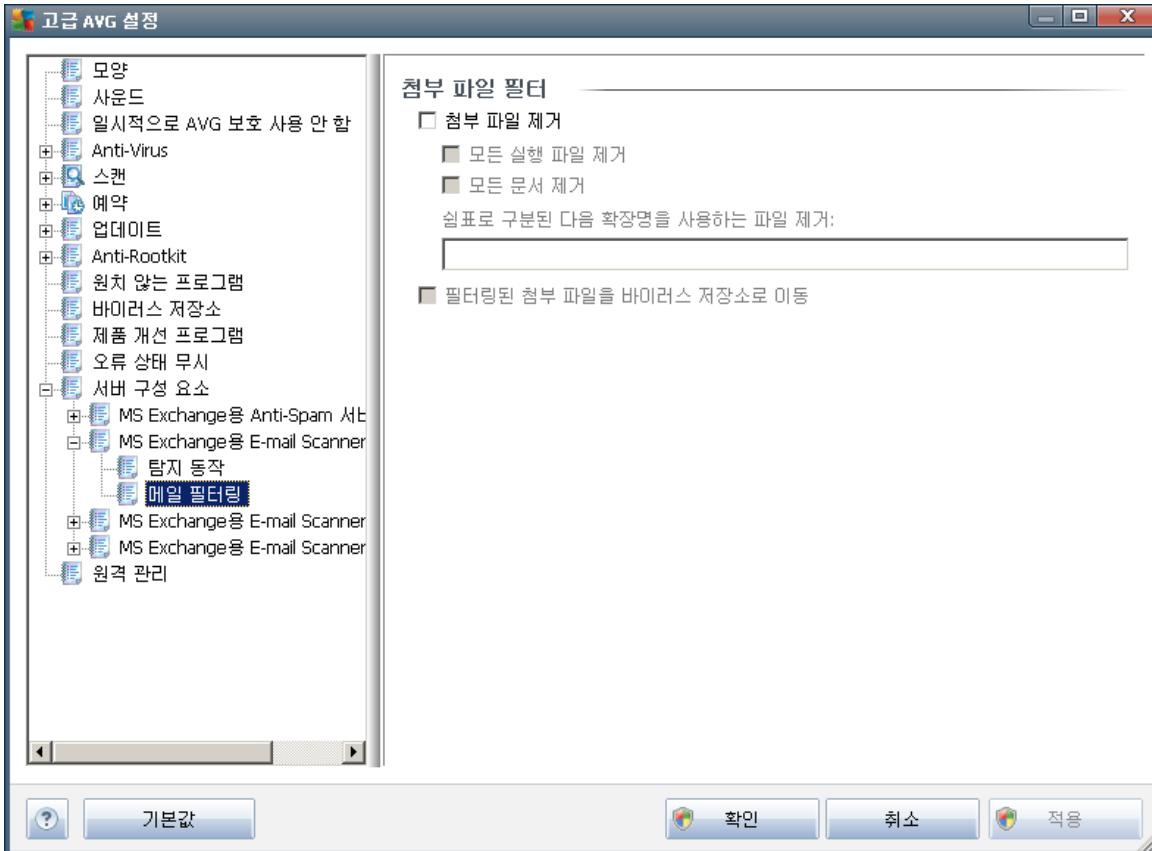
4.6.





: MS Exchange (VSAPI)

4.7.



()

-
-
-
-
-

AVG Email Server Edition 2012

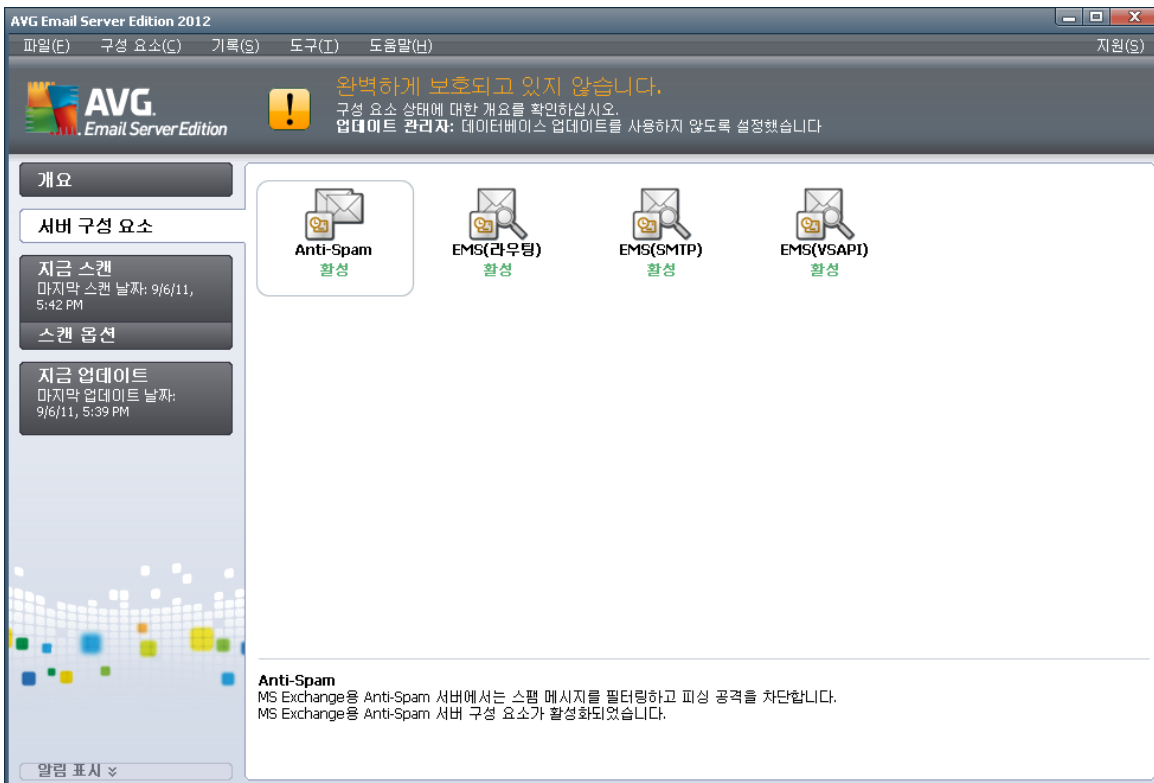


5. E-mail Scanner for MS Exchange Server 2003

5.1.

E-mail Scanner for MS Exchange Server 2003

AVG Email Server Edition 2012



- [Anti-Spam - MS Exchange Anti-Spam](#)

가

- [EMS\(VSAPI\) - E-mail Scanner for MS Exchange\(VSAPI\)](#)

가

가 **MS Exchange Anti-Spam (VSAPI)**



2

o

-

o

-

o

-

•

-

•

-

0

•

-

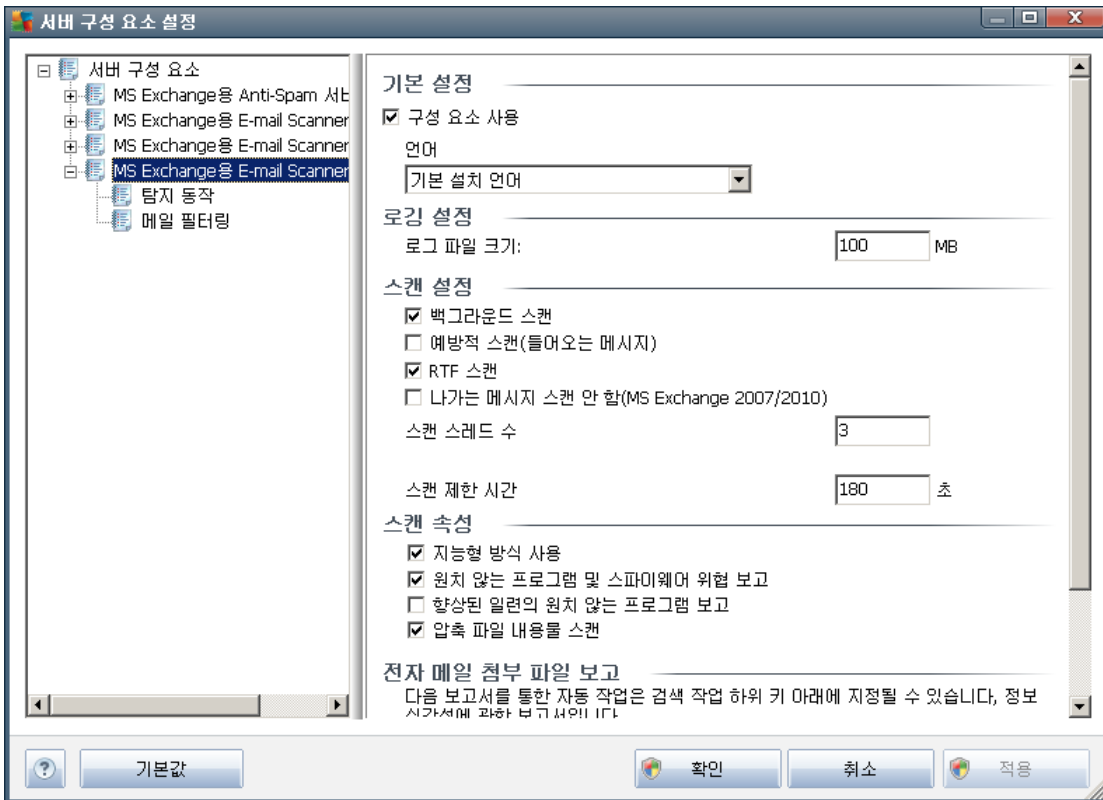
•

-



5.2. E-mail Scanner for MS Exchange(VSAPI)

E-mail Scanner for MS Exchange(VSAPI)



- -
- -
- - 100MB
- -
- Exchange VSAPI 2.0/2.5 AVG
- AVG for Exchange Server
- (: Microsoft Exchange 가)



- ()
VSAPI 2.0/2.5

가 Exchange
(30). 가 가 (FIFO)

:
: 가 MS Outlook

- **RTF** - RTF
- 가
' +1
(' +1) 2
' 5

- - 가 ()
, 180

- -
- - 가

(가)
가 : 가
가

- - zip, rar

().

-



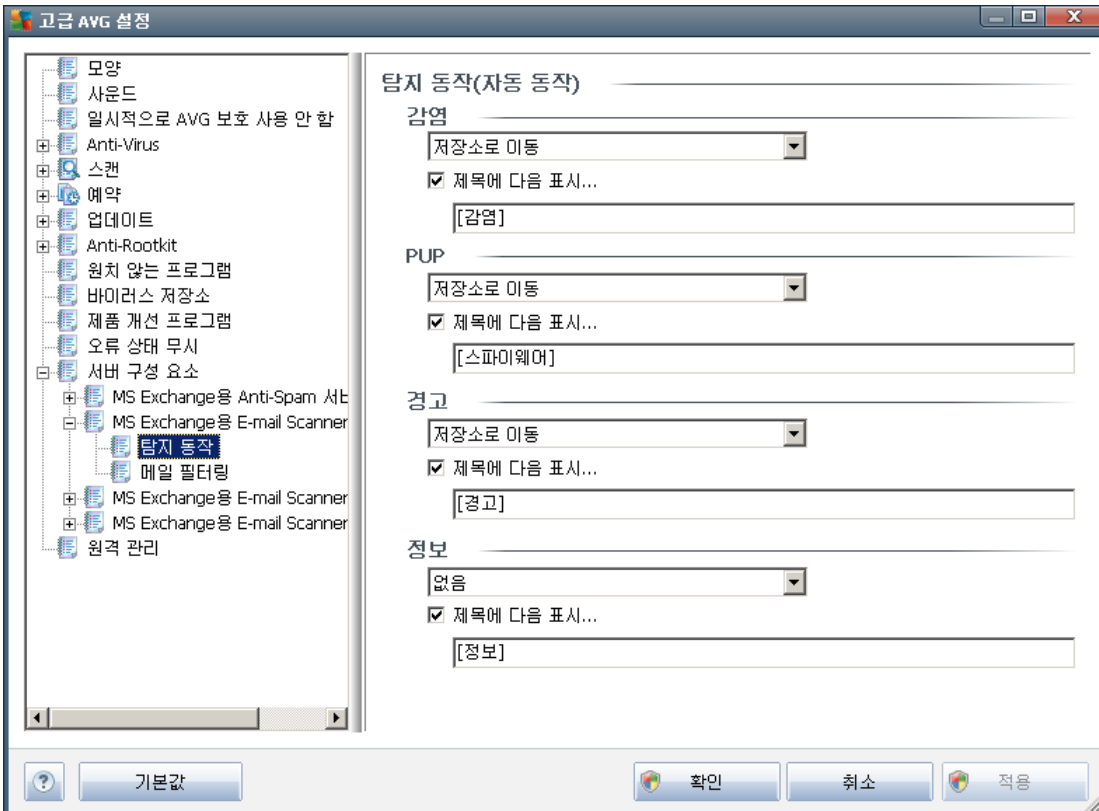
-
- 가
-

. VSAPI 2.0/2.5 Microsoft VSAPI 2.0/2.5

- <http://support.microsoft.com/default.aspx?scid=kb;en-us;328841&Product=exch2k> - Exchange
- <http://support.microsoft.com/default.aspx?scid=kb;en-us;823166> - Exchange 2003 Server 가 VSAPI 2.5

-
-

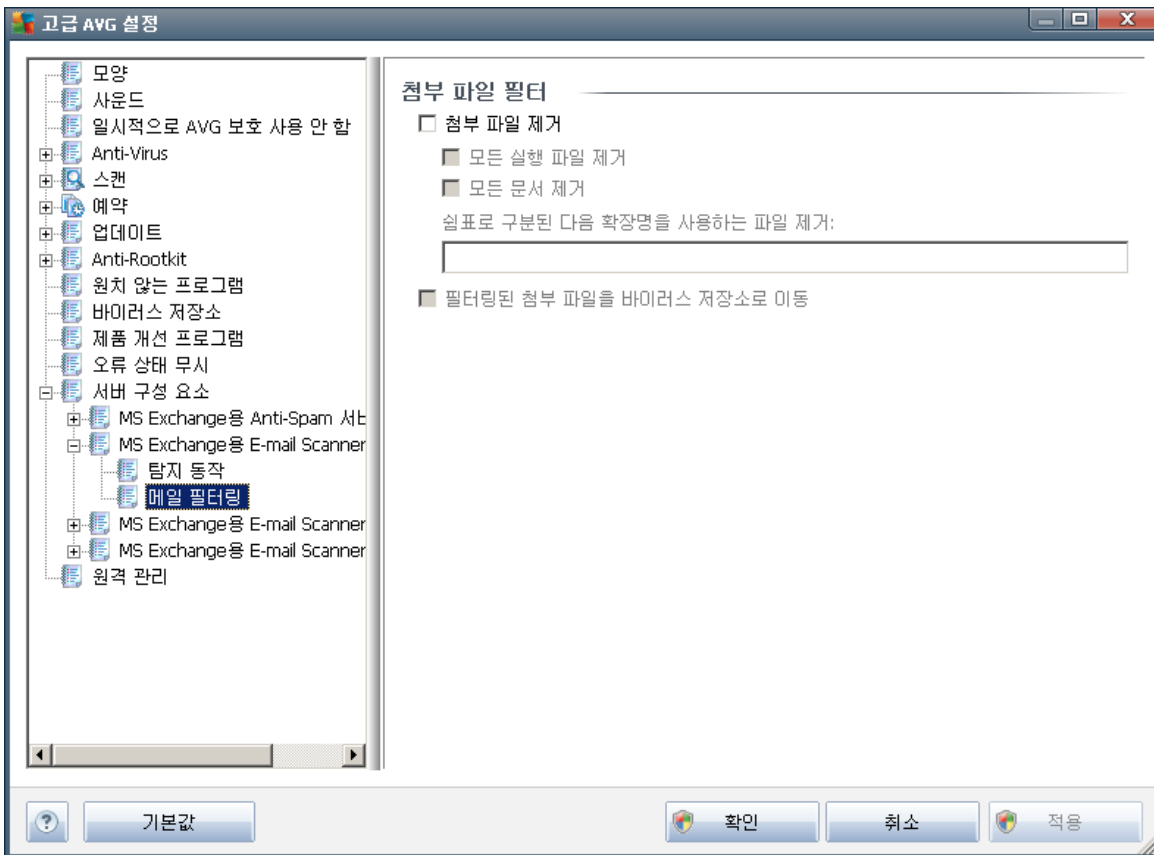
5.3.





-
- PUP()
-
-
- -
- -
- -

5.4.



()



-
-
-
-

AVG Email Server Edition 2012

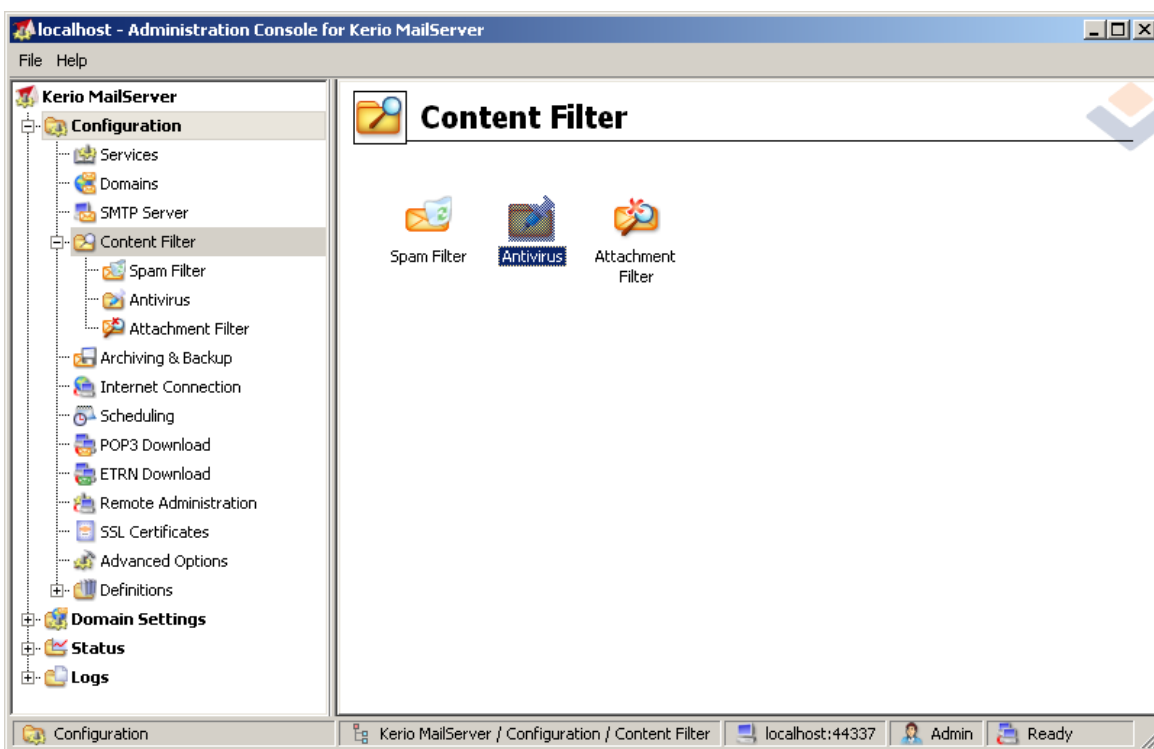


6. AVG for Kerio MailServer

6.1.

Kerio MailServer
Kerio MailServer

. AVG
Kerio Administration Console



가

가

-
- _____ ()
- _____ ()

6.1.1. Antivirus

AVG for Kerio MailServer
Antivirus

AVG Email Server Edition



Antivirus usage

Use integrated McAfee® antivirus engine

Use external antivirus AVG Email Server Edition Options

• 가

If a virus is found in a message

Discard the message

Deliver the message with the malicious code removed

Forward the original message to administrator address:

Forward the filtered message to administrator address:

가

가

○ - 가

○ 가 -

○ -

○ -

• (:)

If a part of message cannot be scanned (e.g. encrypted or corrupted file)

Deliver the original message with a prepended warning


Reject the message as if it was a virus (use the settings above)

○ - 가 () 가

○ - 가

가

6.1.2.



Attachment Filter

Enable attachment filter

If a message attachment is blocked by this filter —

The attachment will be removed from the message and the message will be delivered to the recipient

Send the sender a warning informing that the attachment was not delivered

Forward the original message to administrator address:

Forward the filtered message to administrator address:

Type	Content	Action	Description
<input type="checkbox"/>	File name *.exe	Block	EXE files
<input checked="" type="checkbox"/>	File name *.com	Block	COM files
<input checked="" type="checkbox"/>	File name *.scr	Block	Screenshot files
<input checked="" type="checkbox"/>	File name *.bat	Block	BAT files

Kerio MailServer 가

/ 가

4 가

MIME



- - *.doc.* ' .doc
- - (.가) (.
- - 가... 가

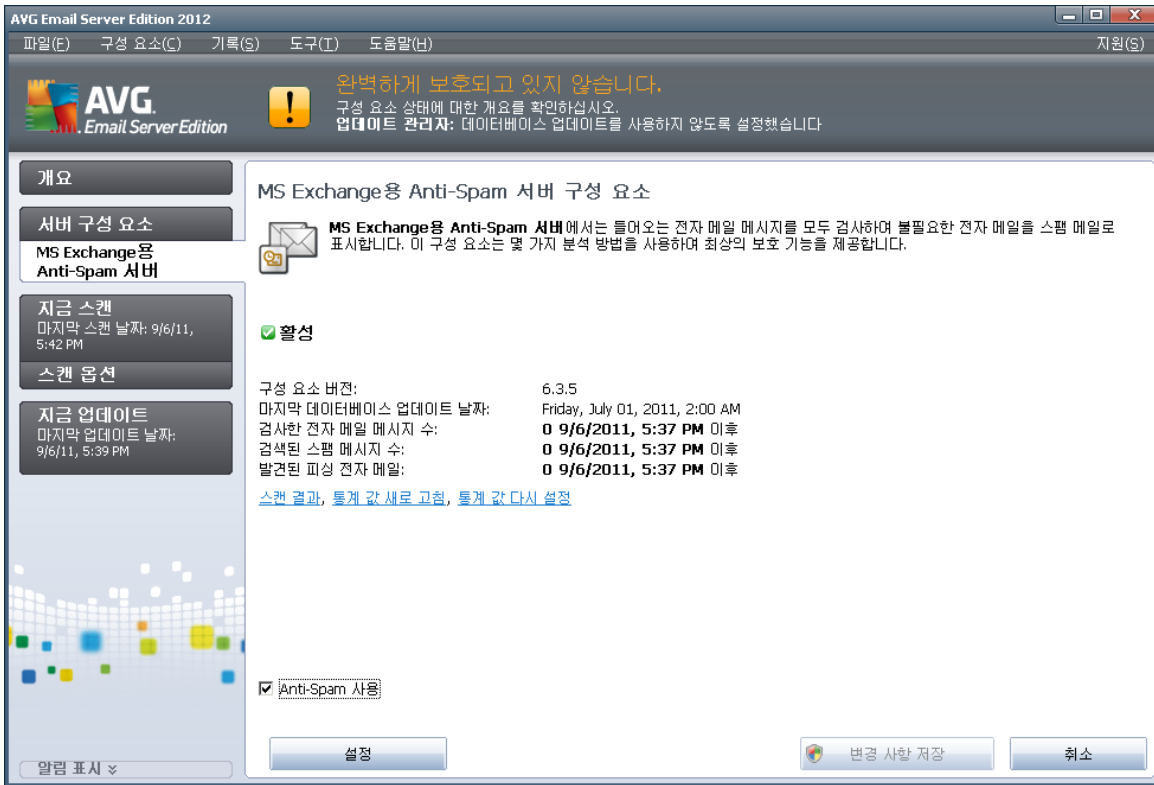


-
- MIME) (



7. Anti- Spam

7.1. Anti- Spam



Anti-Spam

Spam Server

가

)

가

()

(MS Exchange Anti-

가

:

Anti-Spam



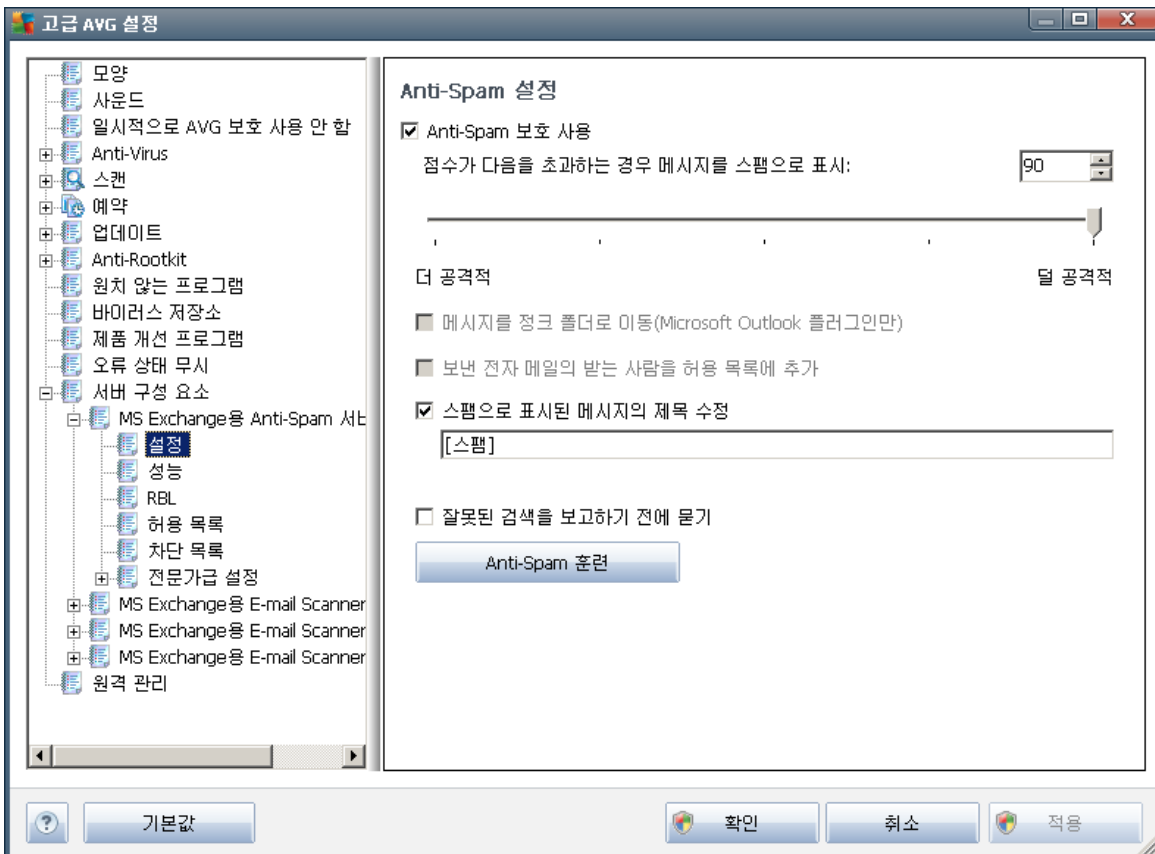
- [Anti-Spam](#)
- [Anti-Spam](#)

7.2. Anti- Spam

가

Anti-Spam 가

7.3. Anti- Spam



Anti-Spam

Anti-Spam

가
. 50 90

(,

Anti-Spam
) 가



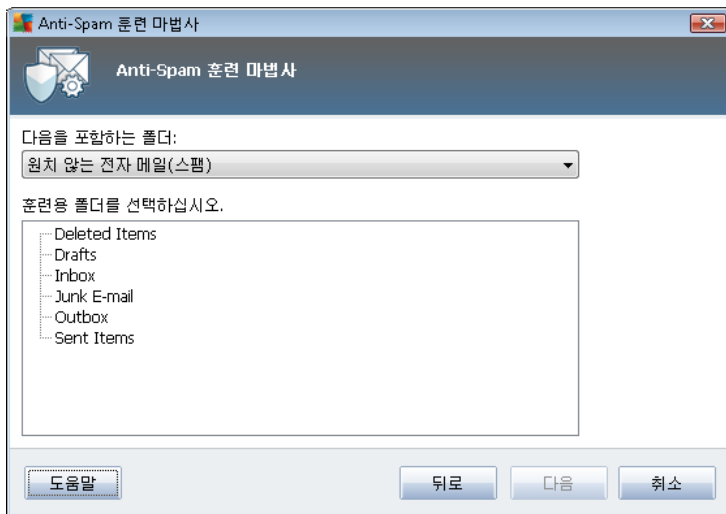
- (MS Outlook, Outlook Express, The Bat!, Mozilla Thunderbird)

- **EML**
eml

()

7.3.2. 가

EML

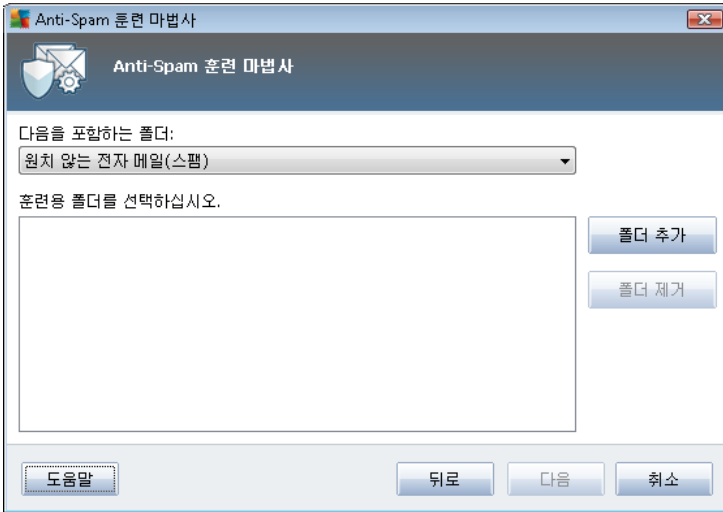


() 가 가 .eml

()가 ()가



가



: Microsoft Office Outlook

MS Office Outlook

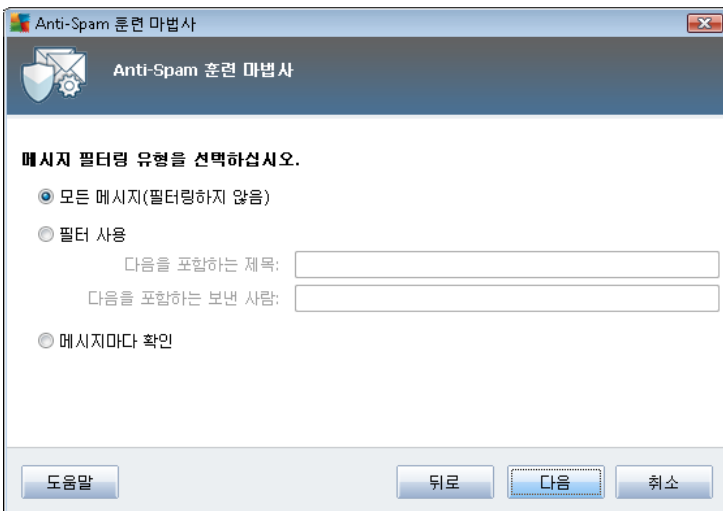
가

()가

가

()가

7.3.3.



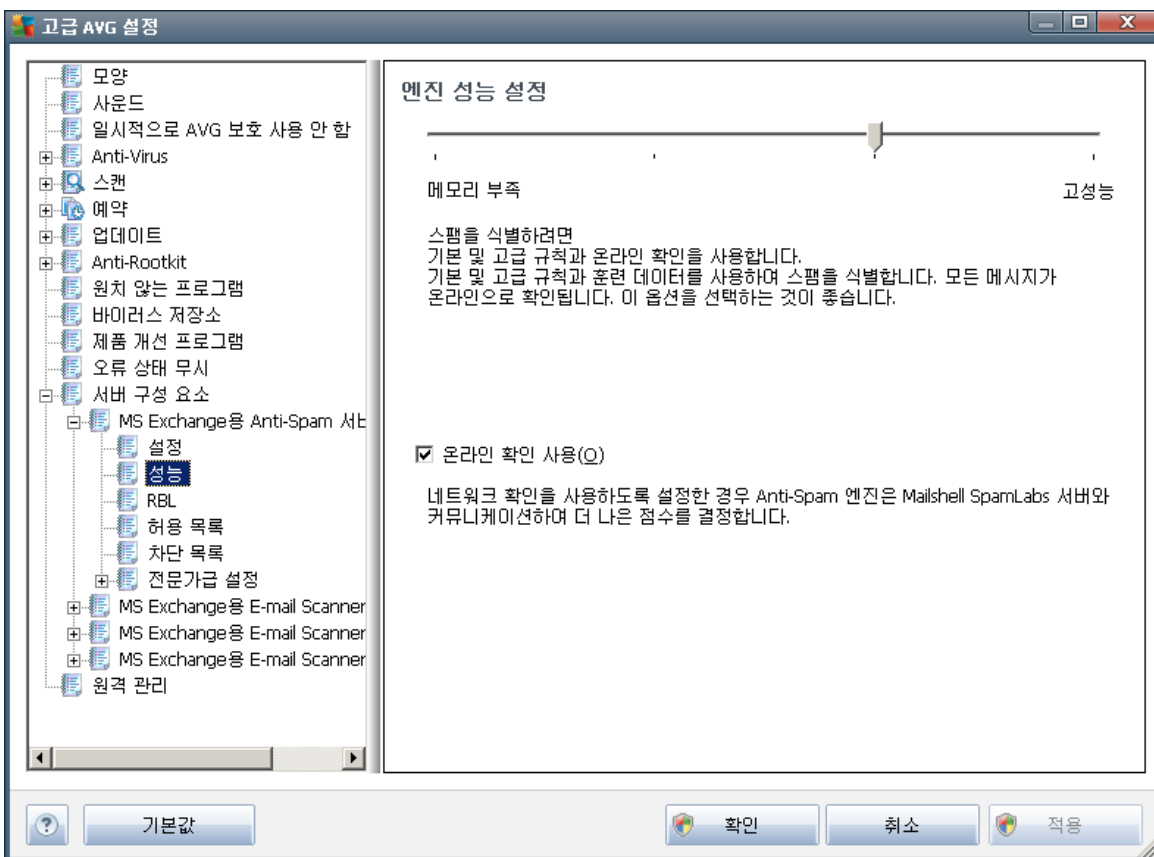
• ()-



()

- / 가 (), 가
- 가
- 가 가

7.4.



() **Anti-Spam**

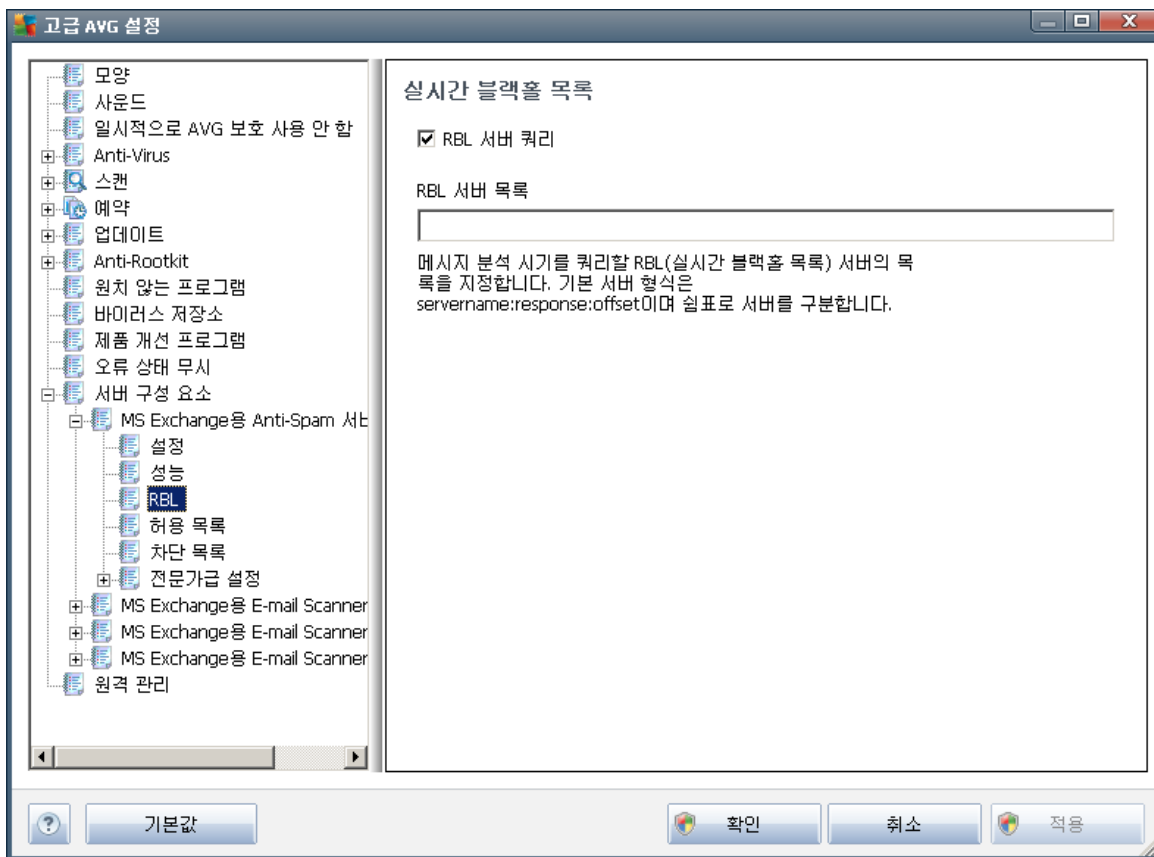


, IP ,
 Mailshell
 Mailshell
 가
 가

7.5. RBL

RBL

가



RBL

RBL() 가 DNS
 가 RBL
 RBL 가 Anti-Spam 가



RBL

RBL
가

2
가

RBL

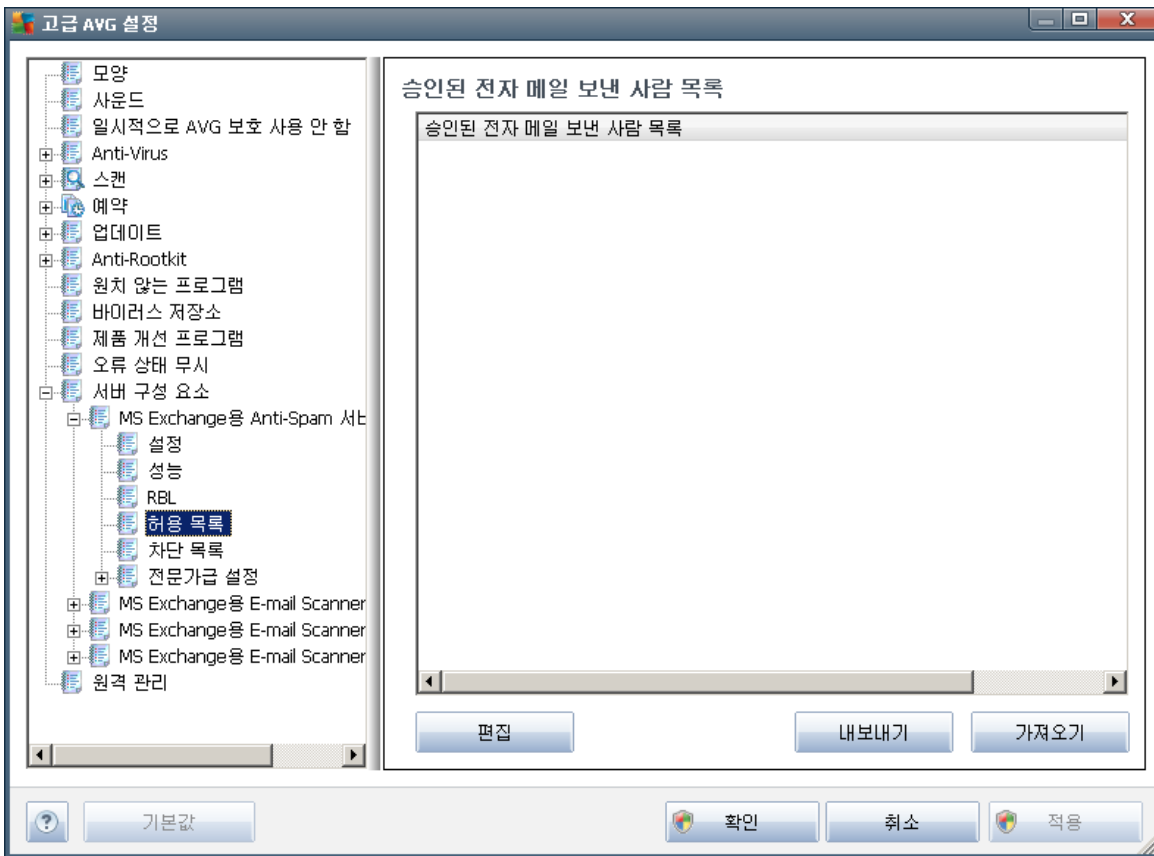
가

:

가

RBL

7.6.



()

가

(: avg.com)

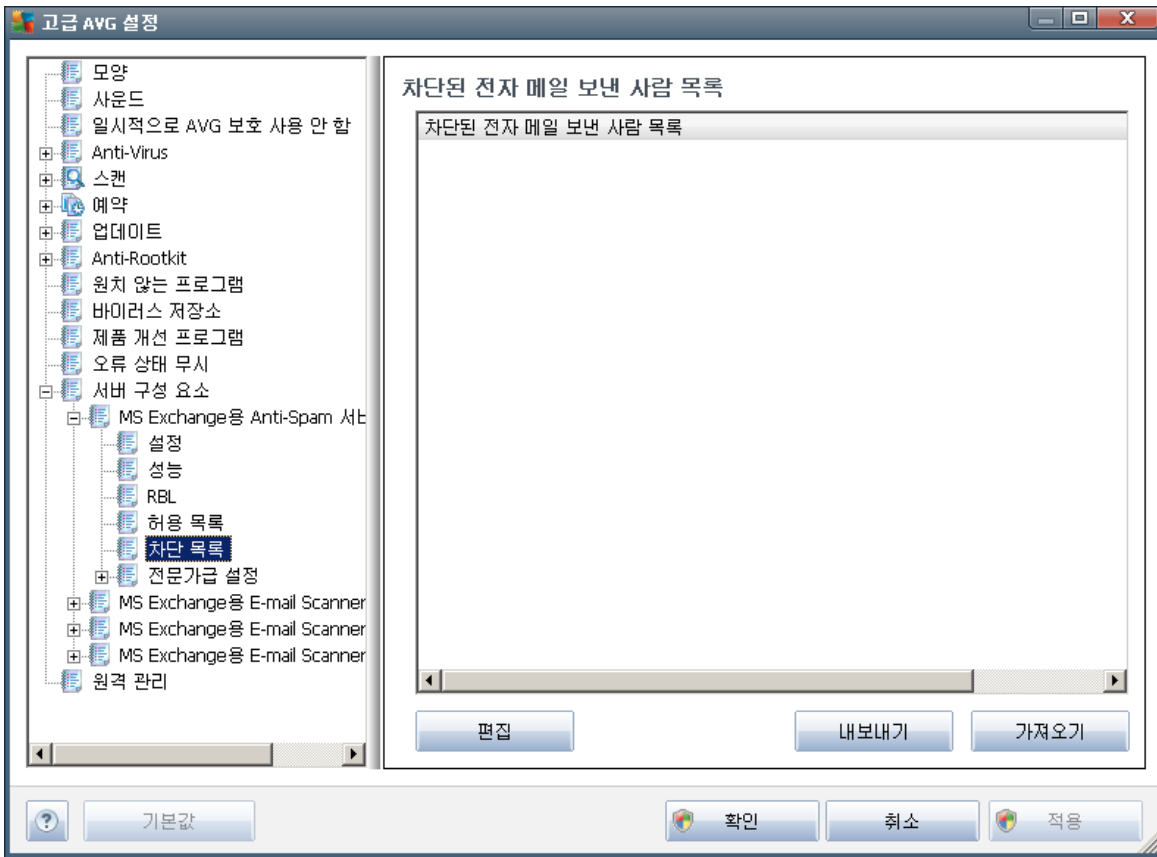
/
가

가
(,



- 가 (WAB 가 Windows 가 Microsoft Office Outlook)
- 가

7.7.



()

(: spammingcompany.com)

/ 가



- ()
- 가 (WAB) 가 Windows () Microsoft Office Outlook
- ()

7.8. 가

- 가 Anti-Spam
- () , LegitRepute
- () , 가
- () , 가 , IP, IP, 가 ,
- **RBL** - RBL , , IP
- () ,



8. AVG

AVG

(: USB)

AVG

AVG

Windows

/AVG 2012/AVG



- **AVG**

- **AVG** - AVG AVG
- **AVG** - AVG (.pck)

- **AVG Firewall**

(.pck) AVG Firewall 가 AVG Email Server Edition

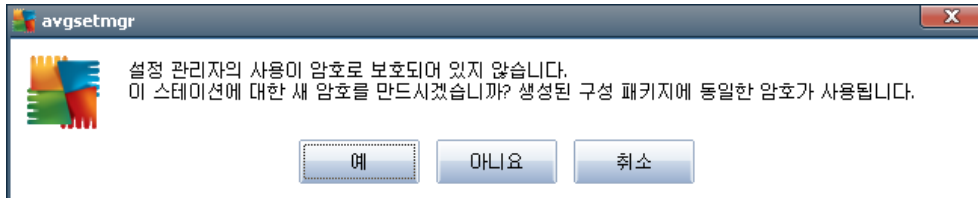
-

- **AVG** - AVG (.pck)

-

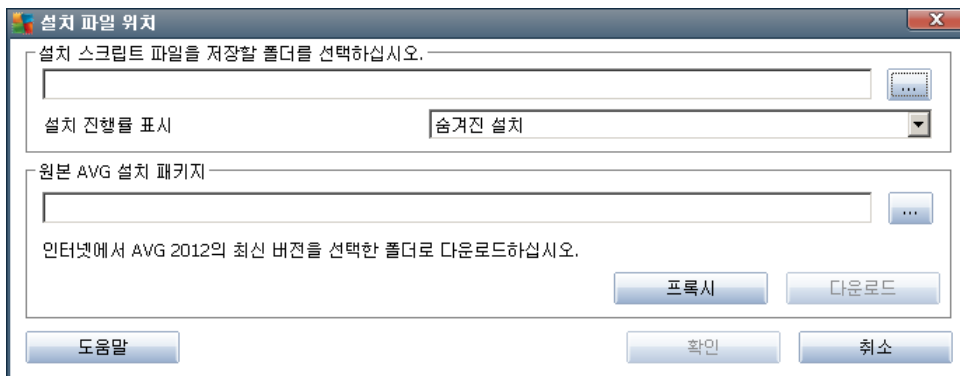


- AVG (AVG) AVG
 (.pck) 가



AVG

- AVG
 AVG
- ✓
- ✓
- ✓ Identity Protection



- ✓ 가
- ✓ -
- ✓ 가
- 가 AVG AVG



AVG

AvgSetup.bat 가 가 ().
AVG가 . *AvgSetup.bat*



9. FAQ

AVG
FAQ

가 AVG (<http://www.avg.com>)