



AVG Email Server Edition 2013

2013.01 (20.11.2012)

Copyright AVG Technologies CZ, s.r.o. All rights reserved.

RSA Data Security, Inc. MD5 Message-Digest Algorithm, Copyright (C) 1991-2, RSA Data Security, Inc. Created 1991

C-SaCzech, Copyright (c) 1996-2001 Jaromir Dolecek(dolecek@ics.muni.cz)
zlib, Copyright (c) 1995-2002 Jean-loup Gailly and Mark Adler



1.	3
2. AVG	4
2.1	4
2.2	4
2.3	4
2.4	4
2.5 MS Exchange	5
3. AVG	6
3.1	6
3.2	7
3.3	7
3.4	8
3.5	-	9
3.6	11
4.	12
5. MS Exchange	14
5.1	14
5.2 E-mail Scanner for MS Exchange (routing TA)	15
5.3 E-mail Scanner for MS Exchange (SMTP TA)	17
5.4 MS Exchange (VSAPI)	18
5.5	20
5.6	21
6. MS Exchange Anti-Spam	23
6.1 Anti-Spam	23
6.2 Anti-Spam	23
6.3 Anti-Spam	24
7. AVG for Kerio MailServer	29
7.1	29
8. FAQ	33



1.

AVG Email Server Edition 2013

AVG Email Server Edition 2013

AVG Email Server Edition 2013
Edition 2013

AVG

AVG

가

AVG Email Server
AVG

AVG

. AVG가

:

가
가

Internet Security

<http://www.avg.com>

AVG



2. AVG

2.1.

AVG Email Server Edition 2013 ()

- Windows 2008 Server Edition (x86 x64)
- Windows 2003 Server (x86, x64) SP1

2.2.

- MS Exchange 2003 Server
- MS Exchange 2007 Server
- MS Exchange 2010 Server
- Kerio MailServer – 6.7.2

2.3.

AVG Email Server Edition 2013 :

- Intel Pentium CPU 1.5 GHz
- 500 MB 가 ()
- 512 MB RAM

AVG Email Server Edition 2013 :

- Intel Pentium CPU 1.8GHz
- 600 MB 가 ()
- 512MB RAM

2.4.

AVG Email Server가

AVG Email Server Edition 2013
Windows

- / / / 가
(/)
/AVG/AVG



- AVG 8.x

:

Exchange - /uninstall setupes.exe

: C:\AVG4ES2K\setupes.exe /uninstall

Lotus Domino/Notes - /uninstall
setupln.exe

: C:\AVG4LN\setupln.exe /uninstall

2.5. MS Exchange

MS Exchange 2003 Server

MS Exchange 2003 Server ():

<http://www.microsoft.com/en-us/download/details.aspx?id=9664>

가

가

.delete

가

MS Exchange 2007 Server ():

<http://www.microsoft.com/downloads/details.aspx?FamilyID=44c66ad6-f185-4a1d-a9ab-473c1188954c&displaylang=ko>

MS Exchange 2010 Server ():

<http://www.microsoft.com/en-us/download/details.aspx?id=28190>



3. AVG

AVG

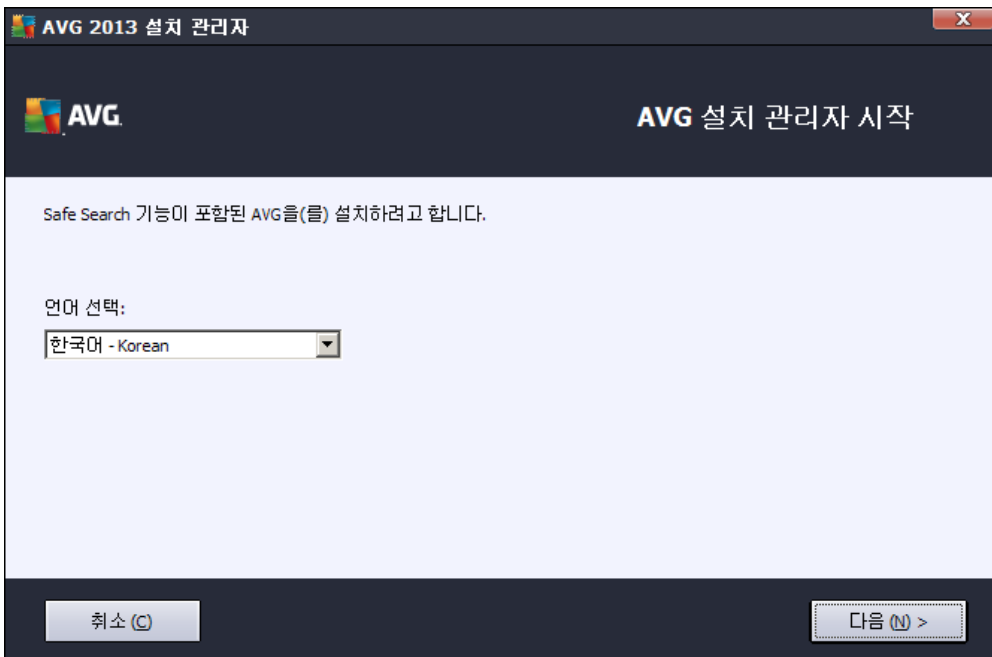
CD

[AVG](http://www.avg.com/download?prd=msw) (<http://www.avg.com/download?prd=msw>)

(x64) 가 , 32 (x86) 64

CD 가 . AVG

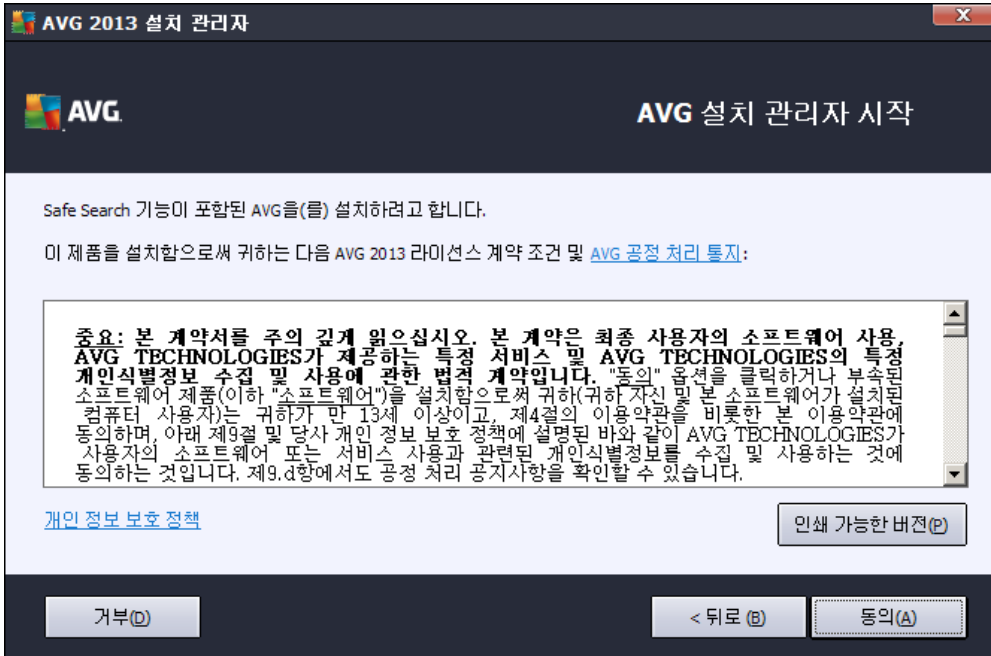
3.1.



가



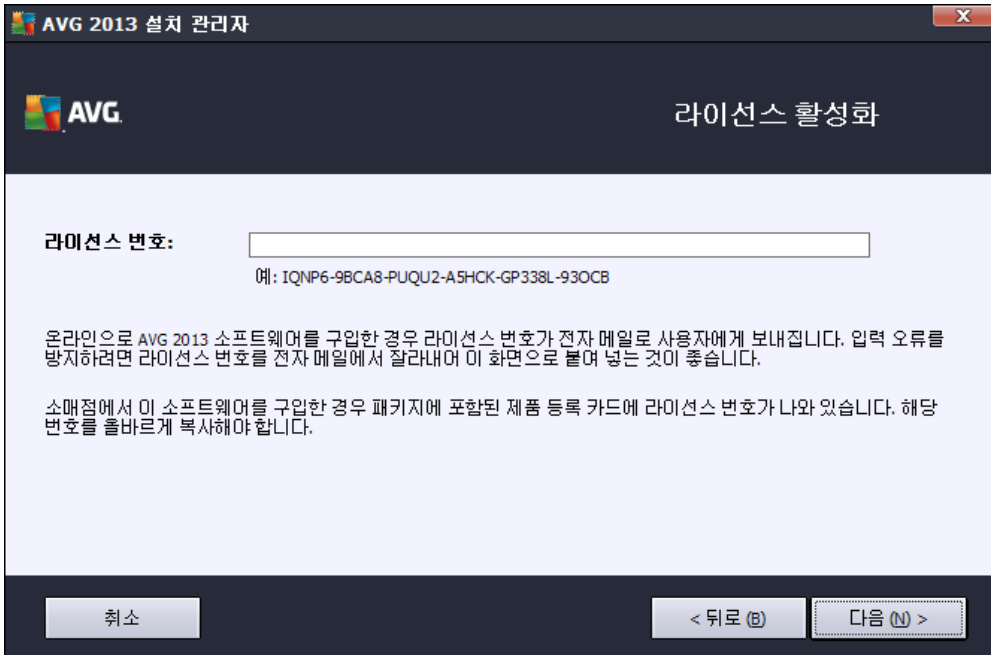
3.2.



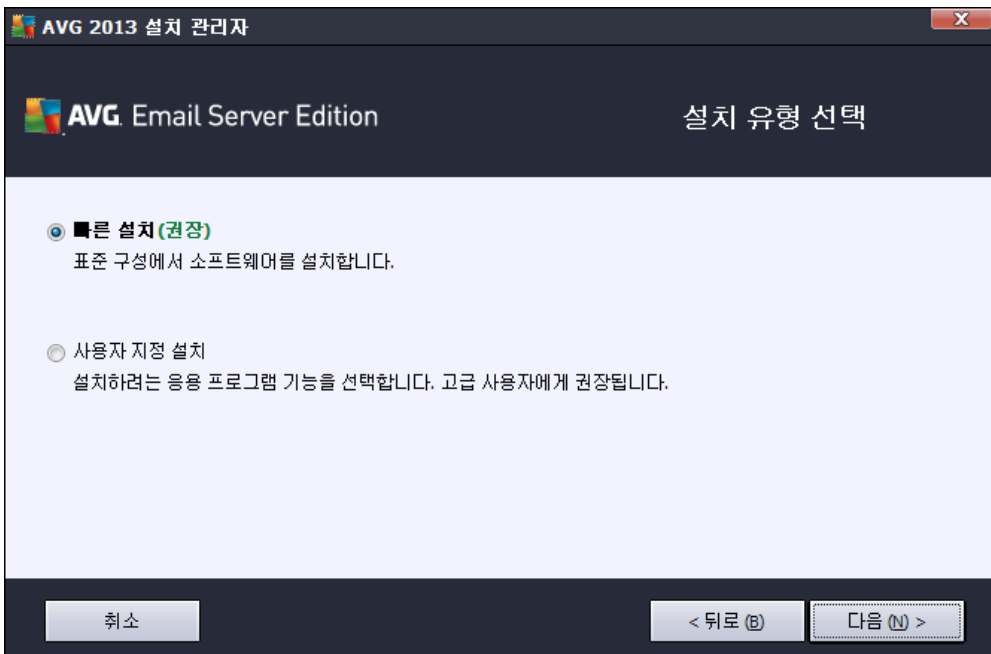
가

3.3.

AVG



3.4.



가

AVG

가

AVG



AVG

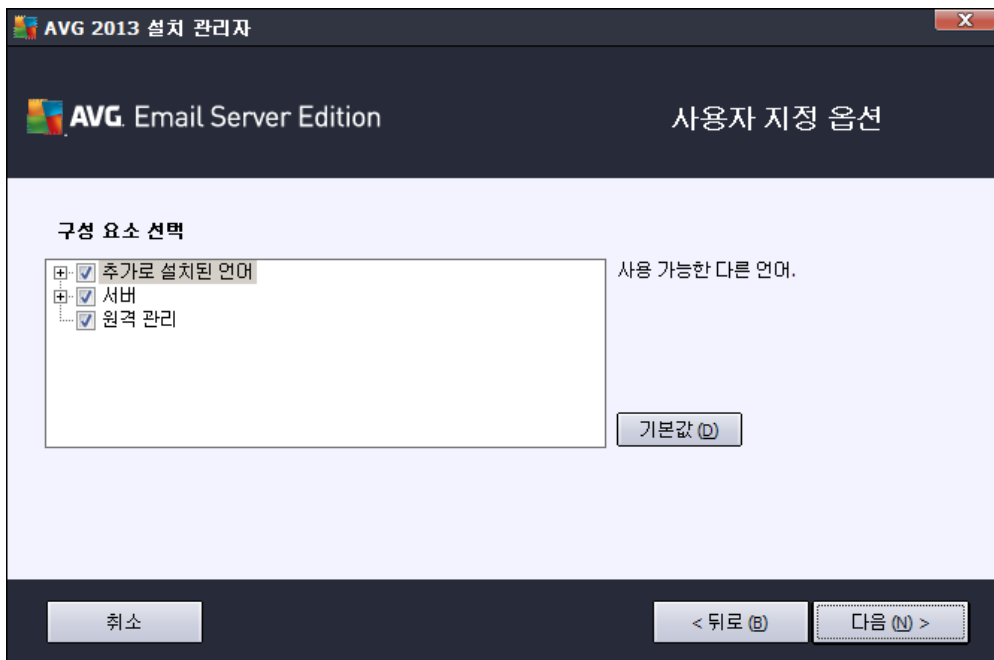
가
가

AVG C:

Program Files

AVG

3.5.



AVG

가

AVG

- **Remote Admin** - AVG AVG DataCenter (AVG Network Edition)

- 가 - AVG 가



():

- **MS Exchange Anti-Spam**

가

- **MS Exchange ()**

MS Exchange HUB 가

- **MS Exchange (SMTP)**

MS Exchange SMTP HUB). (EDGE

- **MS Exchange (VSAPI)**

가

Exchange 2003

Anti-Spam

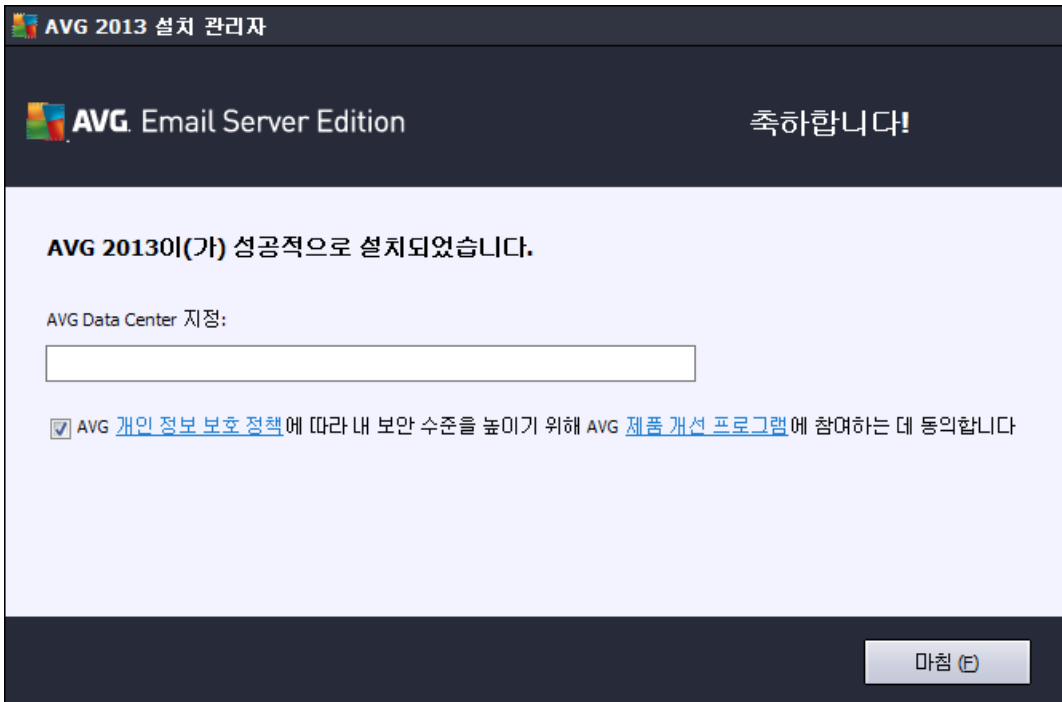
Email Scanner (VSAPI)

가



3.6.

AVG DataCenter



AVG

AVG

()

AVG가



4.

가

AVG Email Server Edition 2013



AVG Email Server Edition 2013
AVG Desktop



MS Exchange 2007

(Exchange 2003 Anti-Spam Email Scanner (VSAPI)). MS

- [MS Exchange](#)
- [MS Exchange Anti-Spam](#)
- [AVG for Kerio MailServer](#)

5. MS Exchange

5.1.

- [EMS \(\) - MS Exchange \(\)](#)

MS Exchange HUB 가

MS Exchange 2007/2010 HUB

- [EMS \(SMTP\) - MS Exchange \(SMTP\)](#)

MS Exchange SMTP

MS Exchange 2007/2010 EDGE HUB

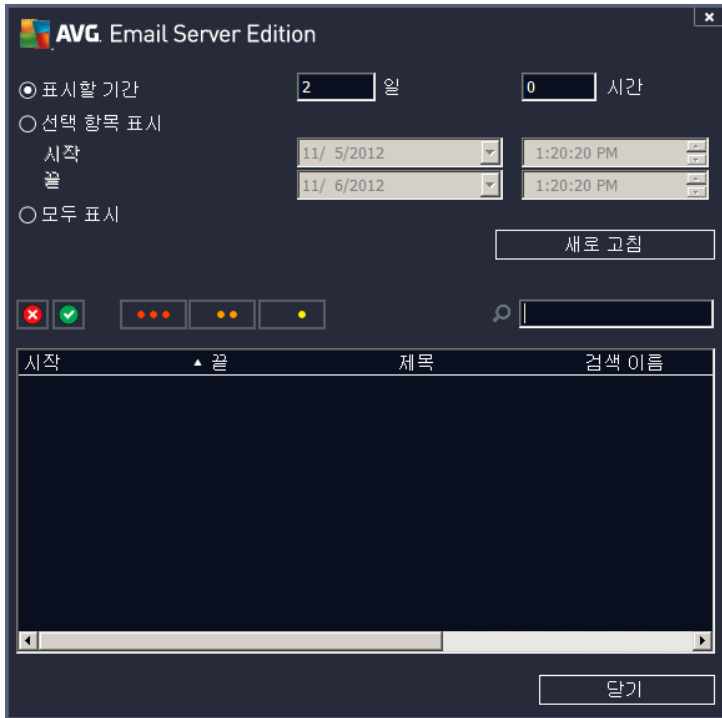
- [EMS \(VSAPI\) - MS Exchange \(VSAPI\)](#)

가

가



- / - 가 가 / (가



2

- -
- -
- -

5.2. E-mail Scanner for MS Exchange (routing TA)

MS Exchange ()

MS Exchange (**TA**)



-
-
- 가
-

- _____
- _____

5.3. E-mail Scanner for MS Exchange (SMTP TA)

MS Exchange (SMTP)
MS Exchange (TA)

- _____
- _____

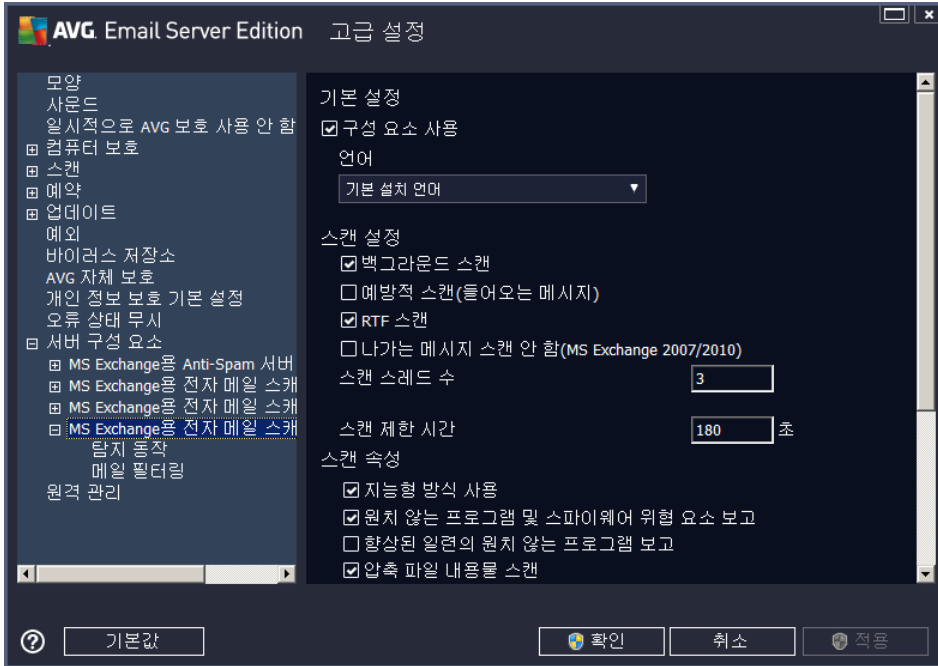


5.4. MS Exchange

(VSAPI)

MS Exchange

(VSAPI)



-
-
-

VSAPI 2.0/2.5

, Exchange

AVG

AVG for Exchange Server

(: Microsoft Exchange

가

-

VSAPI 2.0/2.5

가 Exchange

(30).

가

가

(FIFO)



On-access Scanner가 MS Outlook

- **RTF** - RTF
- **(MS Exchange 2007/2010) - VSAPI** ([routing](#))
 - [TA](#)) 가 () 가
 - VSAPI On-access Scanner ,
 - 가 가 가
 - VSAPI On-access Scanner 가 가
- - 가
 - ' + 1
 - (' + 1) 2
 - ' 5
- , - 180 가 ()
- -
- 가
- -
- (가) , 가 가
- zip, rar
- () .



-
-
- 가
-

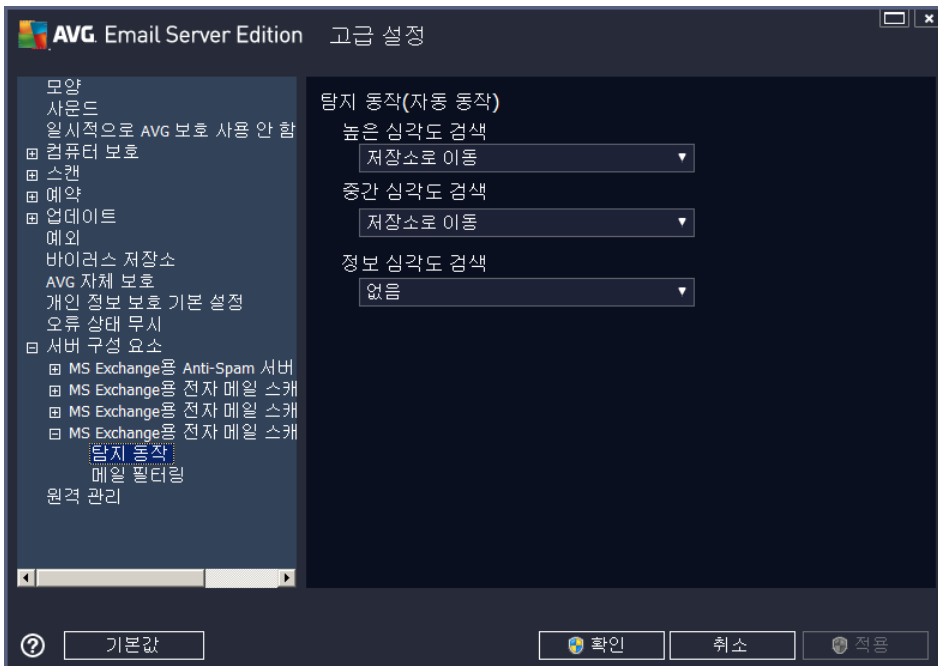
Microsoft VSAPI 2.0/2.5

. VSAPI 2.0/2.5

- <http://support.microsoft.com/default.aspx?scid=kb:en-us:328841&Product=exch2k> - Exchange
- <http://support.microsoft.com/default.aspx?scid=kb:en-us:823166> - Exchange 2003 Server
가 VSAPI 2.5

- _____
- _____

5.5.





-
-
-
-

AVG Email Server Edition 2013



6. MS Exchange Anti-Spam

6.1. Anti-Spam

가 . 가 ,
 가 .
Anti-Spam 가

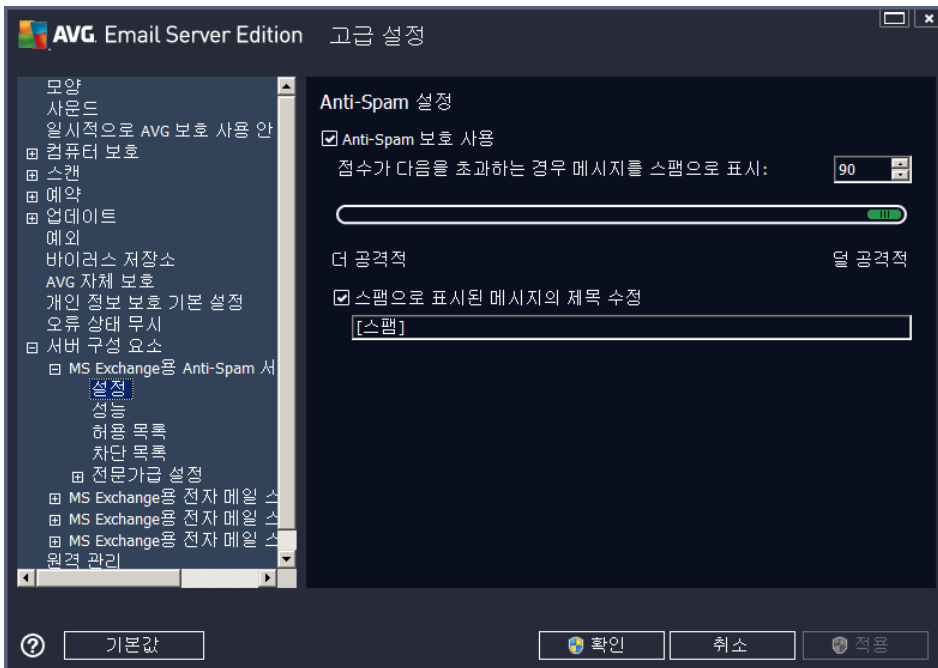
6.2. Anti-Spam



- (/) 가 ,
 :
- 가 / - 가 / (
 -
 - Anti-Spam

6.3. Anti-Spam

6.3.1.



Anti-Spam

가 (, Anti-Spam)
 . 50 90
 가

- 90 - 가 ()
- 80-89 - 가 가
- 60 ~ 79 - 가 가
- 50 ~ 59 - 가
- - 가



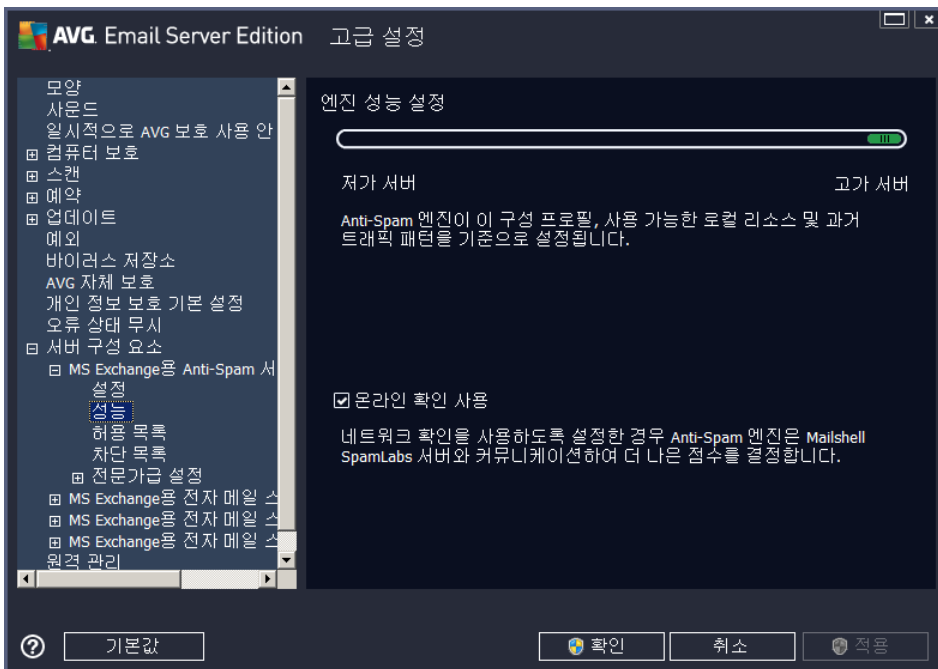
AVG

가

AVG

AVG

6.3.2.



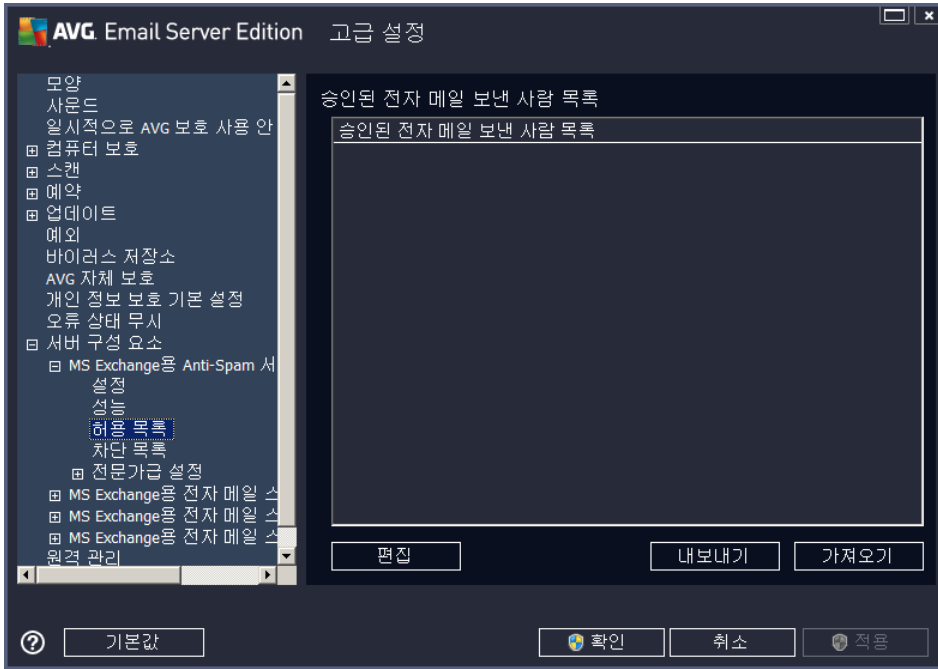
()

Anti-Spam

- _____
- _____, _____, IP _____, _____
_____ 가 _____ Mailshell
- _____ 가 _____

가 _____ 가 _____

6.3.3.



()

가

(: avg.com)

/

가

-

가

(;

)

-

가

-

(

WAB

가

가

(

Windows

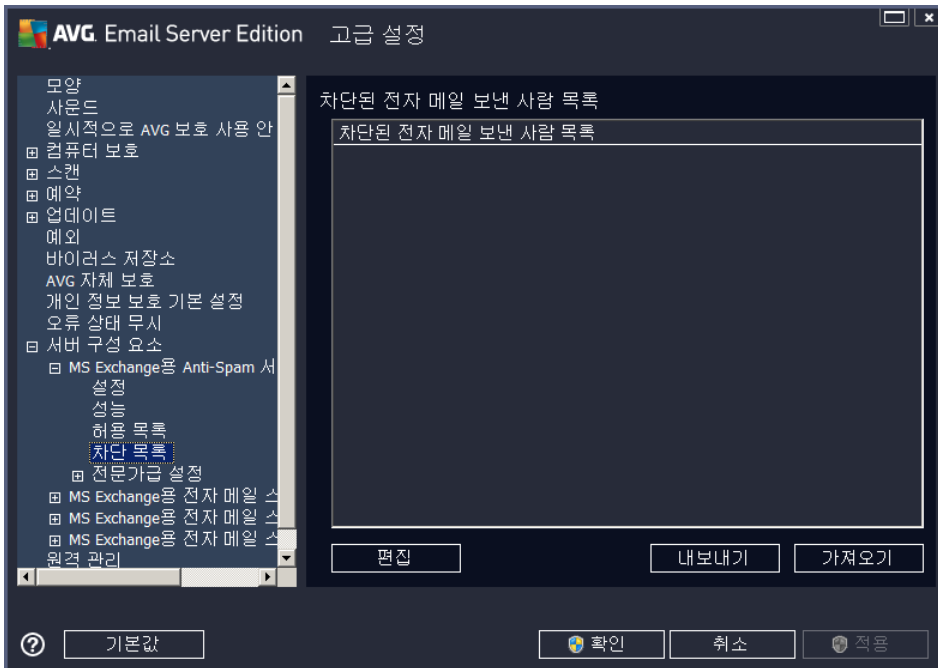
)

Microsoft Office

Outlook

-

6.3.4.



()

(: spammingcompany.com)

- 가
- 가 (WAB , 가 Windows Microsoft Office Outlook)
- 가 (;)

6.3.5. 가 Anti-Spam

가



Spamcatcher (MailShell Inc.)

가

Anti-Spam

- - , 가 , IP, IP, 가, ,
- **RBL** - RBL , , , , IP
- - , ,

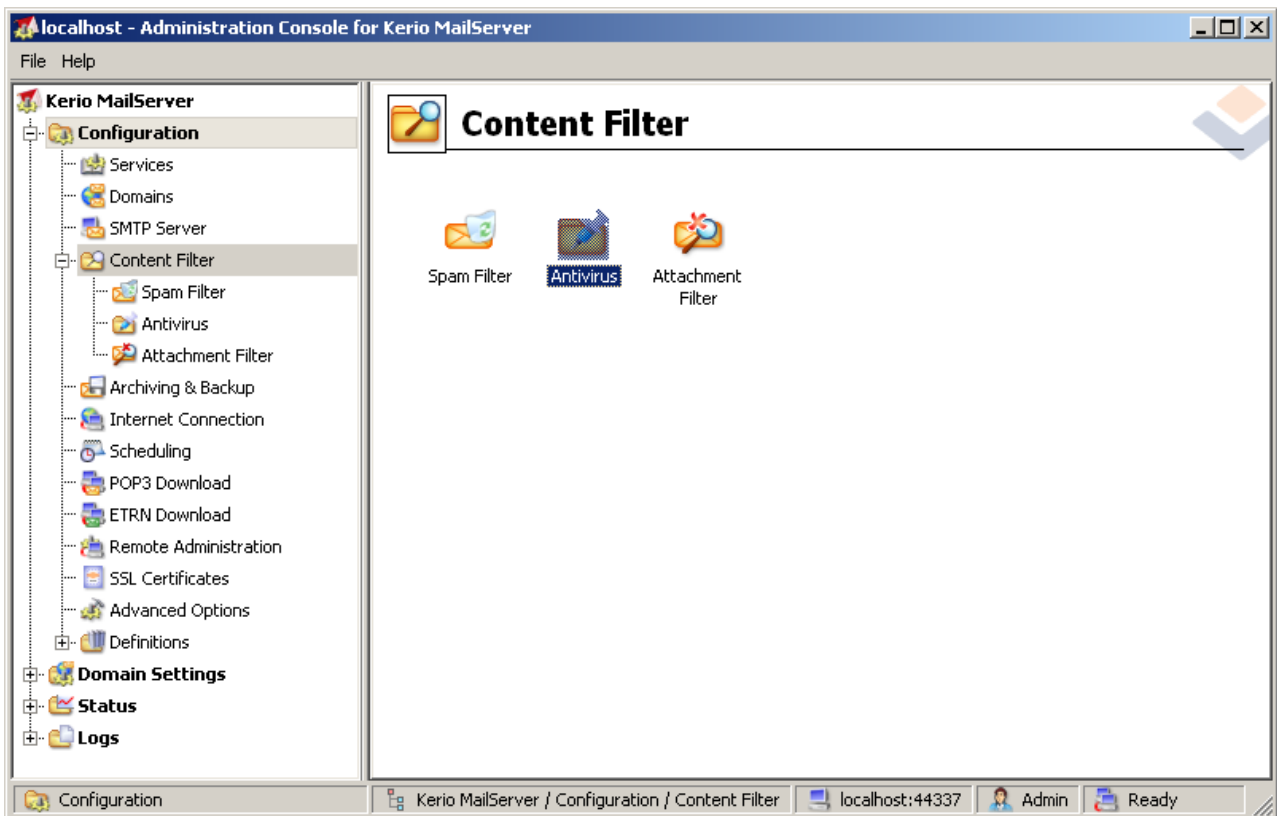


7. AVG for Kerio MailServer

7.1.

Kerio MailServer

. AVG
Kerio Administration Console



가

가

-
- _____ ()
- _____ ()

7.1.1. Antivirus

AVG for Kerio MailServer
Antivirus

AVG Email Server Edition



Antivirus usage

Use integrated McAfee® antivirus engine

Use external antivirus AVG Email Server Edition Options

• 가

If a virus is found in a message

Discard the message

Deliver the message with the malicious code removed

Forward the original message to administrator address:

Forward the filtered message to administrator address:

가 가

- - 가
- 가 -
- -
- -

• (:)

If a part of message cannot be scanned (e.g. encrypted or corrupted file)

Deliver the original message with a prepended warning

Reject the message as if it was a virus (use the settings above)

○ - () 가 가

○ - 가 가

7.1.2.

Attachment Filter

Enable attachment filter

If a message attachment is blocked by this filter —

The attachment will be removed from the message and the message will be delivered to the recipient

Send the sender a warning informing that the attachment was not delivered

Forward the original message to administrator address:

Forward the filtered message to administrator address:

Type	Content	Action	Description
<input type="checkbox"/> File name	*.exe	Block	EXE files
<input checked="" type="checkbox"/> File name	*.com	Block	COM files
<input checked="" type="checkbox"/> File name	*.scr	Block	Screenshot files
<input checked="" type="checkbox"/> File name	*.bat	Block	BAT files

Kerio MailServer 가

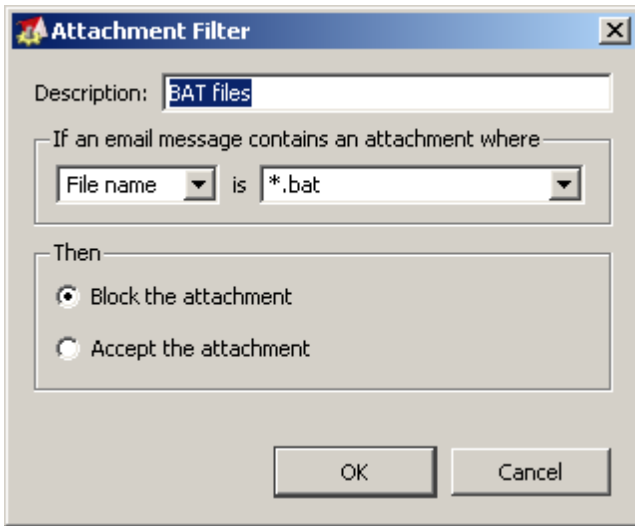
/ 가

4 가

MIME



- - *.doc.* ' .doc
- -) (.가) (
- - 가... 가



-
- MIME)



8. FAQ

AVG

FAQ

가

AVG

<http://www.avg.com>

/