

AVG Rescue CD for Windows

User Manual

Document revision 85.2 (7.4.2009)

Copyright AVG Technologies CZ, s.r.o. All rights reserved.
All other trademarks are the property of their respective owners.

This product contains Windows software licensed from Microsoft Corporation and/or MS Affiliate(s). The Microsoft Windows Preinstallation Environment software included with this software may be used for boot, diagnostic, setup, restoration, installation, configuration, test or disaster recovery purposes only. This software contains a security feature that will cause end user's system to reboot without prior notification to the end user after 24 hours of continuous use. This product uses RSA Data Security, Inc. MD5 Message-Digest Algorithm, Copyright (c) 1991-2, RSA Data Security, Inc. Created 1991.

This product uses code from C-SaCzech library, Copyright (c) 1996-2001 Jaromir Dolecek (dolecek@ics.muni.cz).

This product uses compression library libbzip2, Copyright (c) 1996-2002 Julian R. Seward.

This product uses compression library zlib, Copyright (c) 1995-2002 Jean-loup Gailly and Mark Adler.

This product contains freeCommander software, Copyright (c) 2004 Marek Jasinski.

Contents

| | |
|---|-----------|
| 1. Introduction | 4 |
| 1.1 Notice to users | 4 |
| 1.2 Basic description of the AVG Rescue CD | 4 |
| 1.3 AVG Rescue CD key features | 4 |
| 1.4 Minimum requirements – operating systems supported | 5 |
| 1.5 Minimum hardware requirements | 6 |
| 2. Installation and Startup | 7 |
| 2.1 How to obtain the AVG Rescue CD and license file | 7 |
| 2.2 Differences between downloadable and standalone AVG Rescue CD | 8 |
| 2.3 How to download and create the AVG Rescue CD | 8 |
| 2.4 How to create the AVG Rescue CD - burning ISO image | 18 |
| 2.5 When should the AVG Rescue CD be used | 31 |
| 2.6 Before installation | 31 |
| 2.7 AVG Rescue CD startup and installation | 33 |
| 2.8 AVG Rescue CD Update Wizard | 34 |
| 2.9 How to recognize network adapter drivers | 37 |
| 3. After Startup | 43 |
| 4. AVG Rescue CD – Main Screen | 45 |
| 4.1 Menu File | 46 |
| 4.2 Menu Components | 46 |
| 4.3 Menu History | 47 |
| 4.3.1 <i>Scan Results</i> | 47 |
| 4.3.2 <i>Virus Vault</i> | 47 |
| 4.3.3 <i>Event history log</i> | 47 |
| 4.4 Menu Tools | 48 |
| 4.5 Menu Help | 49 |
| 5. Scans Overview | 50 |
| 5.1 Scan Whole Computer | 51 |
| 5.2 Scan Specific FILES or Folders | 54 |
| 5.3 Scan Results | 56 |
| 5.4 Scan Results Details | 57 |
| 5.4.1 <i>Results Overview Tab</i> | 57 |

| | |
|---|-----------|
| 5.4.2 Infections Tab | 57 |
| 5.4.3 Spyware Tab | 57 |
| 5.4.4 Warnings Tab | 57 |
| 5.4.5 Information Tab | 57 |
| 6. AVG Rescue CD Tools | 63 |
| 6.1 AVG Command line | 63 |
| 6.2 freeCommander | 71 |
| 6.3 Map network drive | 74 |
| 6.4 AVG Registry editor | 75 |
| 6.5 AVG Ping | 77 |
| 6.6 AVG Scan disk | 78 |
| 6.7 AVG Notepad | 79 |
| 6.8 AVG IP Config | 79 |
| 6.9 AVG Keyboard | 82 |
| 7. FAQ and Technical Support | 83 |

1. Introduction

This User Manual provides complete overview of the usage and features provided by the **AVG Rescue CD for Windows**.

1.1. Notice to users

We strongly recommend that only well experienced computer users with advanced computer knowledge use the **AVG Rescue CD**. The **AVG Rescue CD** is distributed as a bootable device that allows you to access operating system settings and all computer data. Incorrect manipulation of the operating system or its resources may result in partial or even complete loss of system stability and functionality or important data loss.

If you decide to use the **AVG Rescue CD**, first, backup all your valuable data that resides inside your computer. Ideally use some portable device for storing backups, like CD/DVD disk(s), diskette(s), USB Flash disk or similar external device.

1.2. Basic description of the AVG Rescue CD

The **AVG Rescue CD** is basically a portable variant of **AVG** based on the Windows PE platform. It is distributed as a bootable CD intended for operating system recovery in such an event where the system cannot be loaded in the regular way – for example due to substantial virus infection. Initially the **AVG Rescue CD** will load the temporary operating system Windows PE edition and run **AVG**, which can be then used in the usual way for virus detection and removal.

In addition, administration tools are available for advanced users. The complete list of features can be found below.

1.3. AVG Rescue CD key features

The **AVG Rescue CD** offers the following key features:

- Running of **AVG** from an alternative Windows environment.
- Detection of threats located on drives and in the Windows system registry.
- Possibility of updating **AVG** virus base from a local AVG installation, hard drive, directly through Internet-enabled LAN, or an external source (flash drive etc.).
- **AVG Command Line** utility to execute various system operations.
- **freeCommander** is an alternative to the standard windows file manager

intended for more IT-experienced users.

- **Map network drive** utility to quickly and easily map a network drive.
- **AVG Registry editor** tool for system registry processing.
- **AVG IP Config** tool for managing network settings.
- **AVG Ping** utility for testing the availability of network resources (servers, domains, IP addresses)
- **AVG Scan Disk** tool for analyzing and testing hard disk integrity with optional automatic error correction.
- Simple **AVG Notepad** utility for saving notes, editing system files etc.
- Direct screen resolution change.

1.4. Minimum requirements – operating systems supported

The **AVG Rescue CD** can be used for recovering the following operating systems:

- MS Windows 2000 SP4 + Update Rollup pack 1
- MS Windows XP
- MS Windows XP Pro x64 Edition
- MS Windows 2000 Server
- MS Windows 2003 Server
- MS Windows 2003 Server x64 Edition

Also, it is necessary that the computer's BIOS will allow direct booting from the CD/DVD, (for correct CD/DVD startup) and that the computer has at least 256 MB of RAM memory installed. Finally, a CD-ROM/DVD-ROM or compatible device must be installed in the computer.

1.5. Minimum hardware requirements

Minimum hardware requirements are as follows:

- Intel Pentium CPU 1,2 GHz
- 550 MB of free hard drive space (for ISO creation)
- 256 MB of RAM memory
- 60 MB free hard drive space for temporary files.

2. Installation and Startup

2.1. How to obtain the AVG Rescue CD and license file

You can acquire the **AVG Rescue CD** either from your local **AVG** software distributor, or by downloading it as a RAR archive, creating an ISO image afterwards and then burning it to CD yourself.

Note: *If you have obtained a regular AVG Rescue CD from your local AVG distributor (or any other way), you may want to check AVG website for potential updates.*

The distributed **AVG Rescue CD** does not contain a license number. To obtain the license number, contact your AVG distributor or use the contact information/ registration form available on the www.avg.com website.

After the registration process, you will receive your license file by e-mail (avgelc.dat). Then you have two options how to proceed:

- a) Create a brand new **AVG Rescue CD** by using the **AVG Rescue CD Creator** utility, and using the new license file (see chapter [2.3 How to download and create the AVG Rescue CD](#)).
- b) If you already have the **AVG Rescue CD**, and you do not want to create a new one, put the avgelc.dat file onto some (removable) device such as a floppy disk, USB flash disk, hard drive etc., restart the computer you are going to repair and boot from the **AVG Rescue CD**.

Note: Make sure, that the drive you will put the **avgelc.dat** file on, will be accessible from the computer on which you are booting with the **AVG Rescue CD**.

Once the **AVG Rescue CD** has started, a notification dialog will be displayed asking for the path to the **avgelc.dat** license file.

Note: *If you store the license file on a USB Flash disk or another USB compatible device, it is essential that this device is already inserted and switched on before you start the **AVG Rescue CD** (ideally even before you start the computer).*

If you decide to download the RAR archive and burn the CD yourself, visit this website address www.avg.com/ww.download?prd=rcd to download the current version. For specific instructions on how to proceed in this particular case, see

[chapter 2.3](#). If you wish to learn more about standalone versus downloadable AVG Rescue CD versions, please see [chapter 2.2](#).

2.2. Differences between downloadable and standalone AVG Rescue CD

To ensure maximum compatibility with target computers, **AVG Rescue CD** is distributed in two different variations.

- **Standalone AVG Rescue CD**

This CD can be obtained from your local AVG distributor or any other way.

Basically it means, that **AVG Rescue CD** will (after boot-up) need to create a temporary **AVG_Rescue_Temp** folder, with approximately 60 MB, on the hard drive (once you manage to repair your system and boot it up, you can delete this temporary folder).

- **Downloadable version of AVG Rescue CD**

This version can be created as the standalone version mentioned above simply from a downloaded archive with the advantage of several possible customizations (see below).

Note: If you have only standalone **AVG Rescue CD**, you can still create an optimized version with larger RAM disk. On each AVG Rescue CD is also distributed the RAR archive and **AVG Rescue CD creator** utility (located in the subdirectory `\PROGRAMS\MAKECD\MakeCD.exe`), so you can easily proceed to create an additional AVG Rescue CD by following the steps in [chapter 2.3](#).

2.3. How to download and create the AVG Rescue CD


To successfully create the **AVG Rescue CD**, you will need to follow the steps below.


- a) If you have not done so yet, buy a license for **AVG Rescue CD** from www.avg.com or from your local **AVG** distributor. You should receive the license file (avgelc.dat) via e-mail.
- b) Download the RAR archive with the **AVG Rescue CD** file structure available from www.avg.com/ww.download?prd=rkd URL.

You can skip this step, if you prefer to use **AVG Rescue CD Creator** for RAR archive download (see below).

- c) Download the **AVG Rescue CD creator** (MakeCD.exe) utility to be able to create a proper ISO image file from the downloaded RAR archive. This utility can also be obtained from URL mentioned above website.
- d) Run the **AVG Rescue CD creator** utility and follow these simple steps below:




- (i) You can either use your downloaded RAR archive (by clicking the first  button and selecting the appropriate file), or simply download the latest one directly from the **AVG Rescue CD creator** utility. We always recommend downloading the newest image, if available.

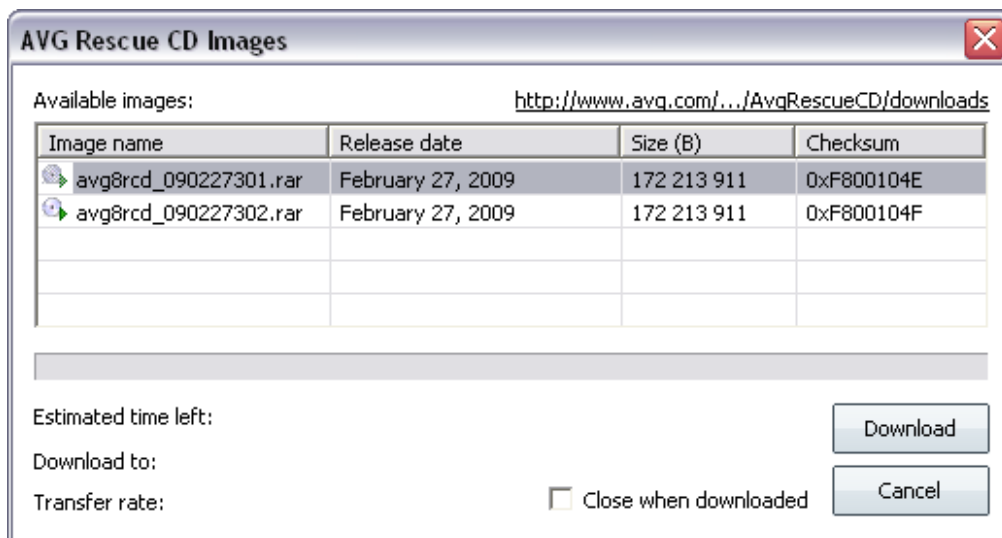
To download the latest RAR archive, or to check whether your previously downloaded archive or **AVG Rescue CD creator** is up-to-date, press the  button. A new dialog will come up. If your version of **AVG**

Rescue CD creator utility is old and a newer version is available, you may see this dialog instead:



By clicking the underlined link, you will open your default Internet browser window and be able to download the updated application. By clicking the  button you can view version history list of the **AVG Rescue CD creator** utility. We always recommend to download the latest version.

If the application is up to date, you will see this dialog:



The dialog contains list of available images to download.

To download the image file, double click it, or press the **Download**


button. The download process will begin immediately after you confirm the download location.

Check the **Close when downloaded** checkbox, if you prefer this dialog to be closed once the download process is finished.


Note: *If you experience any trouble with displaying the available **AVG Rescue CD** images, make sure that your internet connection is currently available, and that your firewall application does not block network access for the **AVG Rescue CD** creator. If there is no Internet connection available, or your firewall is blocking the network communication, you may experience an error dialog.*

– **CRC Checksum** Field



Once the RAR archive is opened or downloaded (in **AVG Rescue CD Creator**), you will see a code in the **CRC Checksum** section. This checksum serves for a verification of the downloaded RAR archive.

Checksum of a RAR archive downloaded using the **AVG Rescue CD Creator** is checked automatically and if everything is correct, you will experience this icon: . In case of any other result, we recommend that you repeat the download process.

If you opened some previously downloaded RAR archive, then you should verify the displayed CRC code with the one, that is displayed


in the list of available images (when clicking  button) before you start the ISO creation. Alternatively you can find the code on the AVG website (**AVG Rescue CD** product pages/**Crc File** hyperlink). The CRC Checksum will not be checked automatically if the file is opened manually.

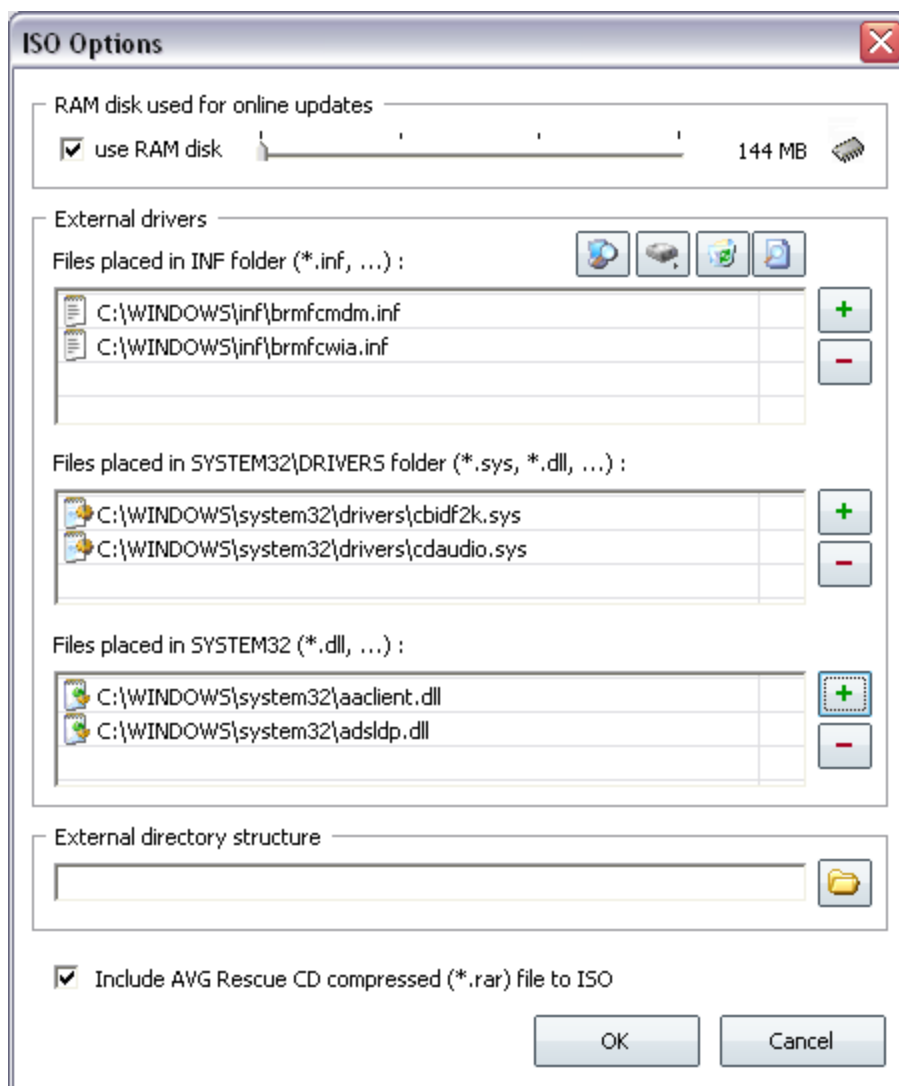
The **CRC Checksum** will be different for every new RAR file version!

- (ii) Click the second  button to select the obtained license file (avgelc.dat).
- (iii) Click the third  button to select an output folder where the ISO image file will be created.

Note: *Make sure, that this folder is empty, before continuing to the next step! Also, you will need at least 550 MB of free space on your hard drive*

before you can create the **AVG Rescue CD ISO file!**

- (iv) To specify additional settings, click the  button. A new dialog will appear:



- **RAM disk used for online updates** section.

Here you can check **use RAM disk** field, that will allow you to choose between 144 to 1024 MB of RAM disk. Use the slider to

choose the preferred amount.

Note: *If you decide to use the RAM disk feature, it is necessary that the target computer on which the **AVG Rescue CD** will be used contains at least 256 MB of RAM memory + the size of your chosen RAM disk.*


The RAM disk is used after AVG Rescue CD boot to store temporary files. For more information on differences between possible versions, please navigate to [chapter 2.2](#).

– **External drivers** section



As the Windows version on which **AVG Rescue CD** is built may not contain all network adapter drivers (or their most current versions), you may use this dialog to add your own network adapters drivers. You can also add any other device type drivers, if needed.

Warning: *As **AVG Rescue CD** is built on the 32bit Windows XP SP2 US version, make sure you always use the appropriate 32bit (x86) drivers when adding new ones! Otherwise **AVG Rescue CD** may become unstable!*

*If you experience any difficulties starting **AVG Rescue CD** with custom drivers included, try to re-create the ISO (CD) without these drivers and boot again. If the problems persist and you cannot boot **AVG Rescue CD** the regular way, please contact AVG technical support.*


To find out how to recognize and add your Windows network drivers see [chapter 2.9](#). Alternatively you can use the  button, that will automatically try to find network drivers on your local computer and add them.

Note: *Only plug and play enabled devices are supported! Also keep in mind, that adding the drivers does not guarantee that the hardware will work in the **AVG Rescue CD** environment.*

Use the  and  buttons to add and remove files. To remove or insert multiple files simply select them by using the mouse and pressing the appropriate button. You can use DEL and INS keyboard buttons as well for deleting or adding files in the individual dialog fields.

Files can also be dragged directly to the appropriate fields by using drag & drop Windows functionality, for example from the Windows Explorer dialog window.

In the first field insert only .inf network driver files (located in the **C:\WINDOWS\inf** folder). The inserted .inf files will be on the ISO renamed to **oem0.inf**, **oem1.inf** etc. Once the files are inserted, you can view the driver details by placing your mouse cursor over the file name. The displayed list of file names is only suggested one. For more information on finding out the correct driver files, please see [chapter 2.9](#).

To view the selected .inf file content directly from the **AVG Rescue CD Creator** click this icon .

In the second field insert the network driver files, that reside in the **C:\WINDOWS\System32\Drivers** folder.

In the third field insert the network driver files, that reside in the **C:\WINDOWS\System32** folder (if applicable).

All selected files will be included in the appropriate system folders during the ISO creation process.

– **Adding SCSI, RAID or SATA drivers**

Should you require to add any **RAID, SCSI or SATA** drivers, that are not part of the standard MS Windows XP 32bit edition (i.e. are not recognized during **AVG Rescue CD** startup), follow this procedure:

First, you need to download the appropriate driver from your hardware manufacturer's website (or get it from some other source). You will need drivers, that are compatible with MS Windows XP 32bit (x86). Once you have the drivers, extract them to a local folder on your hard drive. The file structure must not be changed! An example of such archive:

C:\ADAPTEC\TXTSETUP.OEM

C:\ADAPTEC\WINXP32\ADPU320.SYS

C:\ADAPTEC\WINXP32\ADPU320.INF

C:\ADAPTEC\WINXP32\ADPU320.CAT

C:\ADAPTEC\WINXP64\ADPU640.SYS

C:\ADAPTEC\WINXP64\ADPU640.INF

C:\ADAPTEC\WINXP64\ADPU640.CAT

C:\ADAPTEC\WINXP64\ADP64U.DLL

C:\ADAPTEC\WIN2000\ADPU320W2.INF

C:\ADAPTEC\WIN2000\ADPU320W2.SYS

C:\ADAPTEC\WIN2000\ADPU320W2.CAT

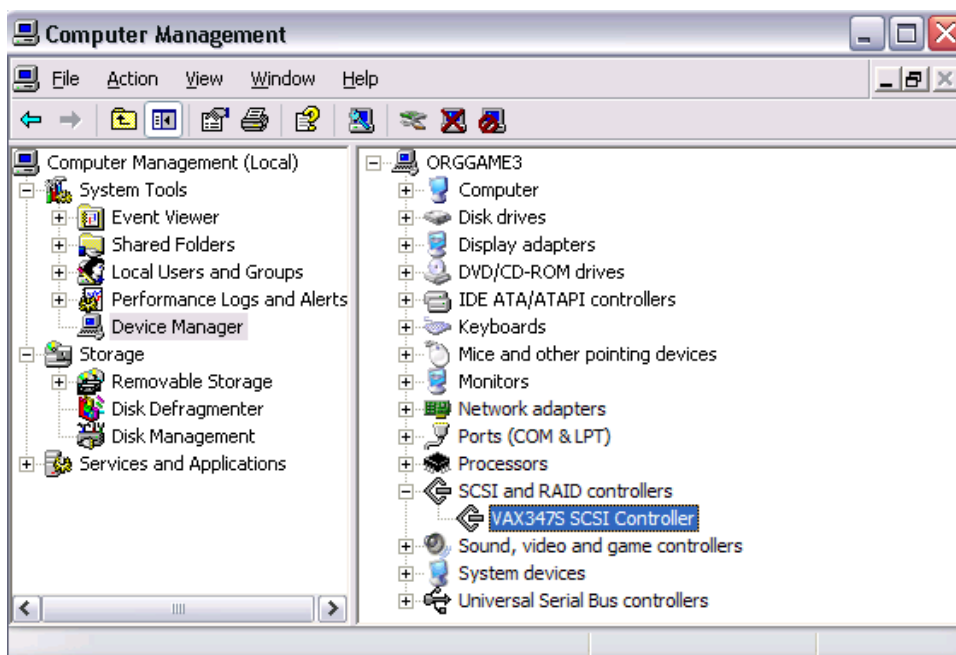
The most important file is TXTSETUP.OEM, that is part of any SCSI, RAID or SATA driver. It contains all important information about the driver and will be needed for correct AVG Rescue CD boot with the new driver.


If you are unsure about the device name, you can simply navigate to the Windows Device Manager and find it there.

Note: *This procedure applies only if you are operating on a MS Windows XP 32bit system and if you are going to use **AVG Rescue CD** on the same computer!*

To open Windows **Device Manager**, click the Windows **Start**, right-click **My Computer** and select **Manage**. In the new dialog select **Device Manager** from the **System Tools** branch.



In the right part of the screen navigate to the **SCSI and RAID controllers** item. Here you will find a list of available SCSI compatible adapters.



Once you have the correct drivers, you need to add them to the ISO image. To do so, click on this button  and choose the **TXTSETUP.OEM** file of the requested driver. If the TXTSETUP.OEM file is shared for more operating systems, you may see a dialog asking for OS selection. See the sample below:




If so, always select Windows XP (x86/32bit) drivers and press the **OK** button. Once the driver files are inserted, you can view the driver details by placing your mouse cursor over the file name. You can use this feature to check, if the drivers were inserted properly.

Also, you can use the  and  buttons to add and remove files, if necessary. To remove or insert multiple files simply select them by using the mouse and pressing the appropriate button. You can use DEL and INS keyboard buttons as well for deleting or adding files in the individual dialog fields.

Files can also be dragged directly to the appropriate fields by using drag & drop Windows functionality, for example from the Windows Explorer dialog window.

– **External directory structure** section

If you need to use your own tools, utilities or some third-party software during the recovery process, you can include them on the ISO (CD) as well. Simply click this button  and choose the folder, where your tools reside. All files and sub-folders from the selected directory will be placed into **/External** directory on the CD. Please keep in mind the size of the media that you will use for burning the ISO image later. You will require adequate disk space for the ISO creation, if you add some space-consuming applications. If the size of the created ISO file is bigger than 700 MB (CD-R), you can burn **AVG Rescue CD** to DVD-R disc (4,7 GB capacity or more).

Note: Due to security and stability reasons, Windows system registry functionality is partly limited within the **AVG Rescue CD** environment (for example .reg file importing). Therefore, some applications that need to use the system registry during their operation might not be working properly in the **AVG Rescue CD** environment. Generally we do not recommend changing the system registry.

– **Include AVG Rescue CD compressed (*.rar) file to ISO** checkbox

Check this checkbox if you prefer to store the compressed RAR archive to the ISO (CD) as well. This file can be used anytime later for creating another **AVG Rescue CD** without repeating the download process again.

(v) Once all options are set, click the **Create ISO** button. The ISO file with **AVG Rescue CD** should be created in a short time.

e) Once you have successfully created the **AVG Rescue CD** ISO image file, proceed to [chapter 2.4](#) for instructions on burning a CD from the ISO image

file.

2.4. How to create the AVG Rescue CD - burning ISO image

If you have already obtained a copy of the **AVG Rescue CD**, then you can skip this chapter and proceed to [chapter 2.5](#). To create an AVG Rescue CD, you need to create an ISO image first! For more information, see [chapter 2.3](#).

To complete this step, you will need a CD/DVD burning drive, (either CD-RW or DVD-RW compatible drive with ability to burn CD-R/DVD-R disks). Additionally you will need burning software, that allows you to create a CD from the ISO image file and one CD-R/DVD-R or compatible disc.

To successfully burn the ISO image file you can use your favorite burning software or download a free one (for example CDBurnerXP Pro www.cdburnerxp.se, but several other choices also exist including free trial versions of most famous commercial burning software). Below, you will find more detailed information on how to use different software products to burn the ISO image.

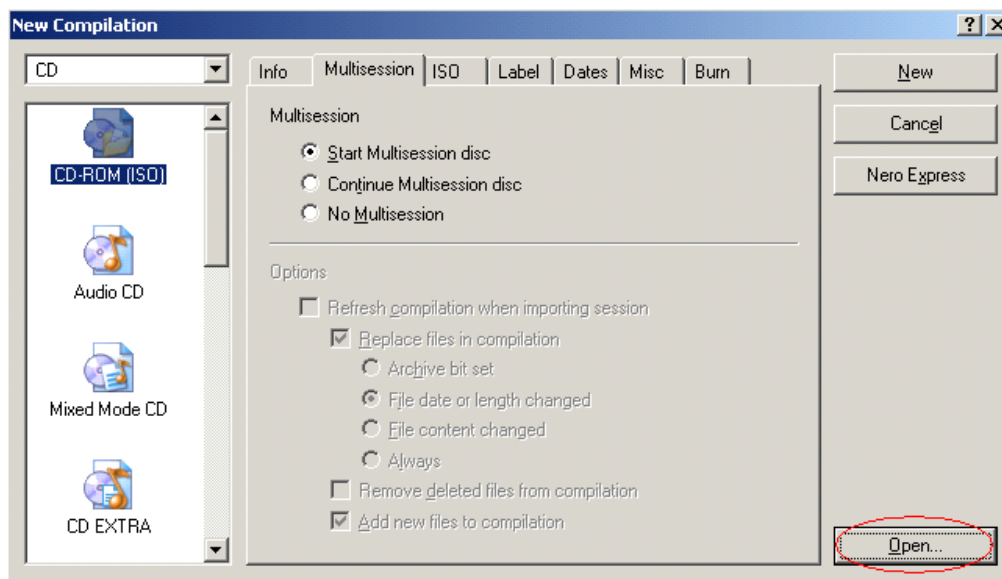
a) Ahead Nero burning ROM

Nero Burning ROM is a commercial burning tool that can be used for burning ISO images.

More information about this program can be found on the Ahead Software Web site at: <http://www.nero.com>.

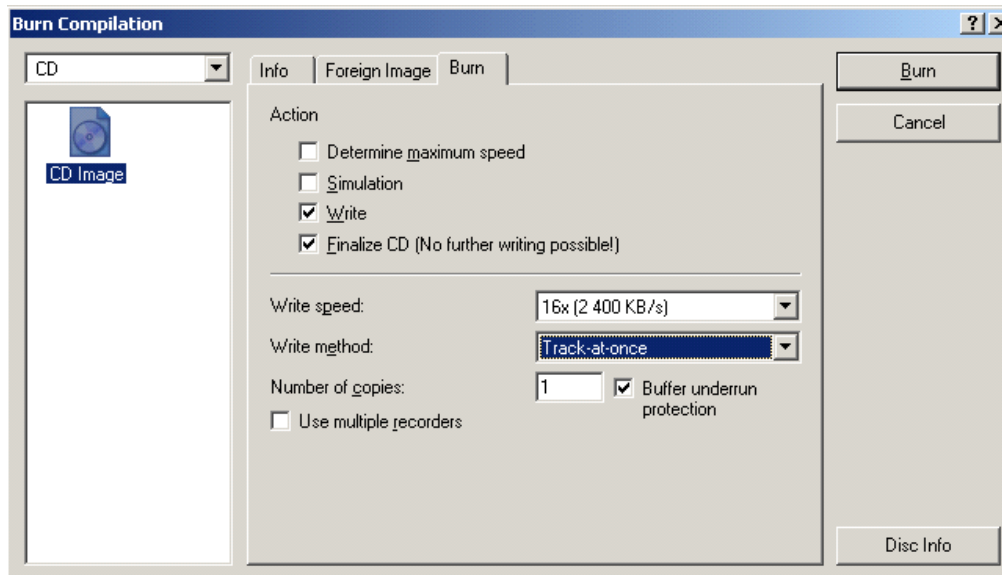
Steps to create a CD from the ISO image:

- (i) Insert a blank CD in your CD-RW drive.
- (ii) Start **Nero Burning ROM** from the Nero program folder in the start menu.
- (iii) *New Compilation* wizard should start. If not, select **File/New** from the upper menu.
- (iv) Select **CD-ROM (ISO)** (should be marked as default) and click **Open** button located on the bottom of the dialog.



In the **Open dialog** box, select the **AVG Rescue CD** ISO file, and then click Open.

New dialog Burn compilation should come up:



You can choose additional properties before burning, we recommend to tick the **Finalize CD** checkbox to assure maximum compatibility (but

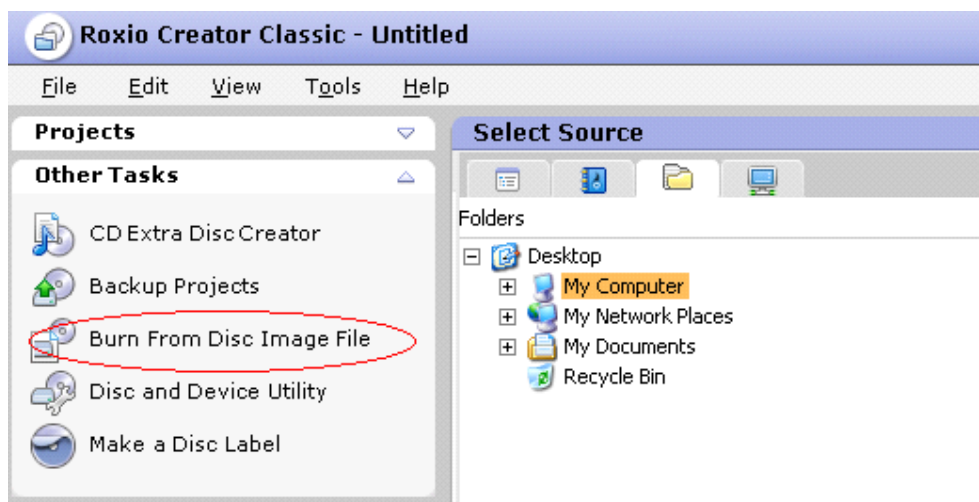
then you will not be able to burn any additional data to the disk). Click **Burn** to start the burning process.

b) Roxio Easy Media Creator 8

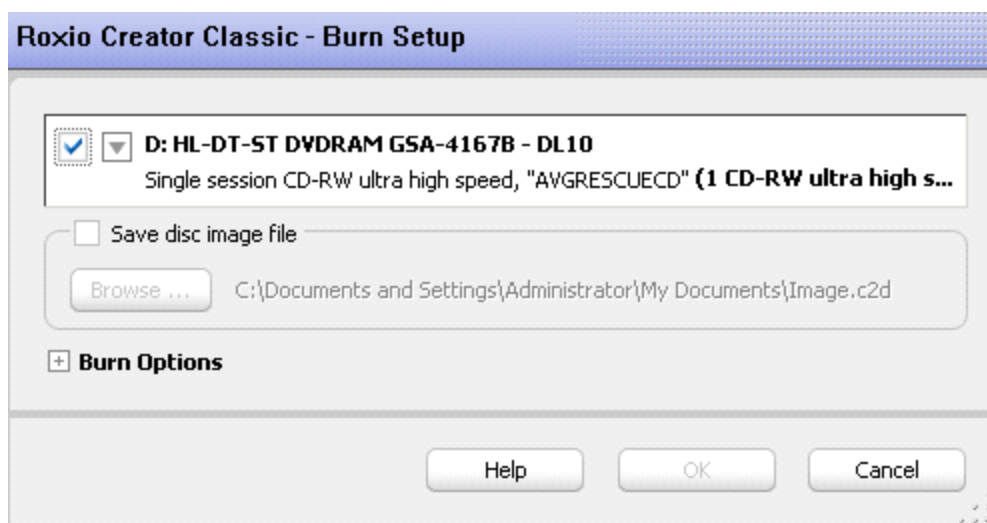
Formerly known also as WinonCD or Easy CD creator. For more information about the software visit the Roxio web site (<http://www.roxio.com>).

Steps to create a CD from the ISO image:

- (i) Insert a blank CD in your CD-RW drive.
- (ii) Start **Creator Classic** from its usual location at *Start Menu/Programs/Roxio Easy Media Creator/Data/Creator Classic*. From the left menu select the option **Burn From Disc Image File**.



- (iii) Locate the ISO file and click **Open**. A new dialog will show up:



- (iv) Click **Burn Options** if you want to choose additional burning options, and then click **OK** to start the burning process.

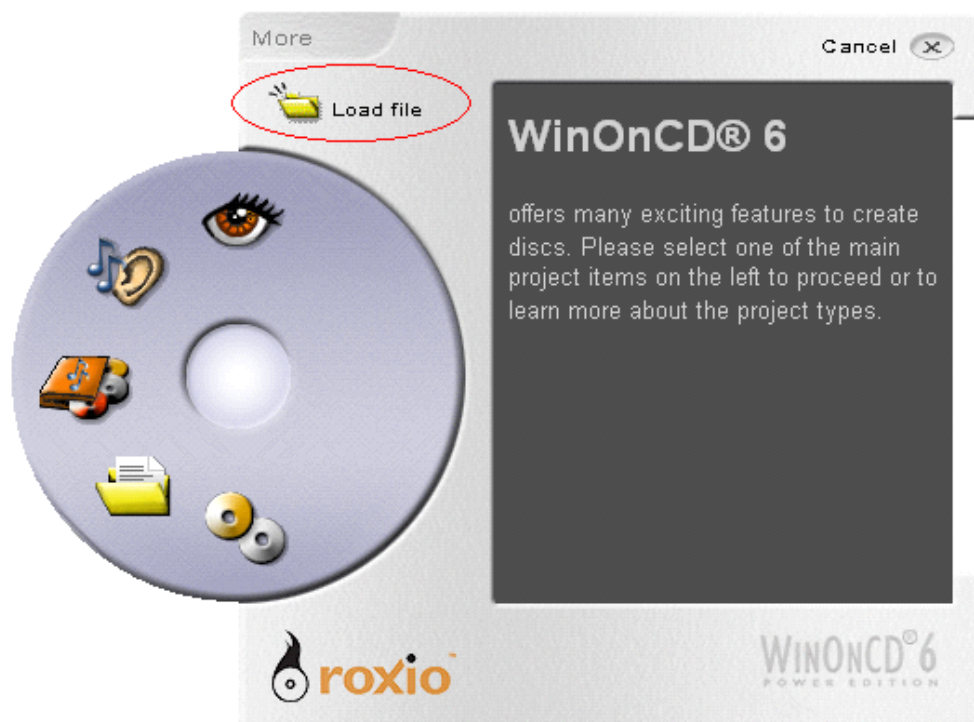
c) **WinOnCD 6.0**

Originally a commercial software. Nowadays distributed as a free edition also. For more information about the software visit the Roxio web site (<http://www.roxio.com>).

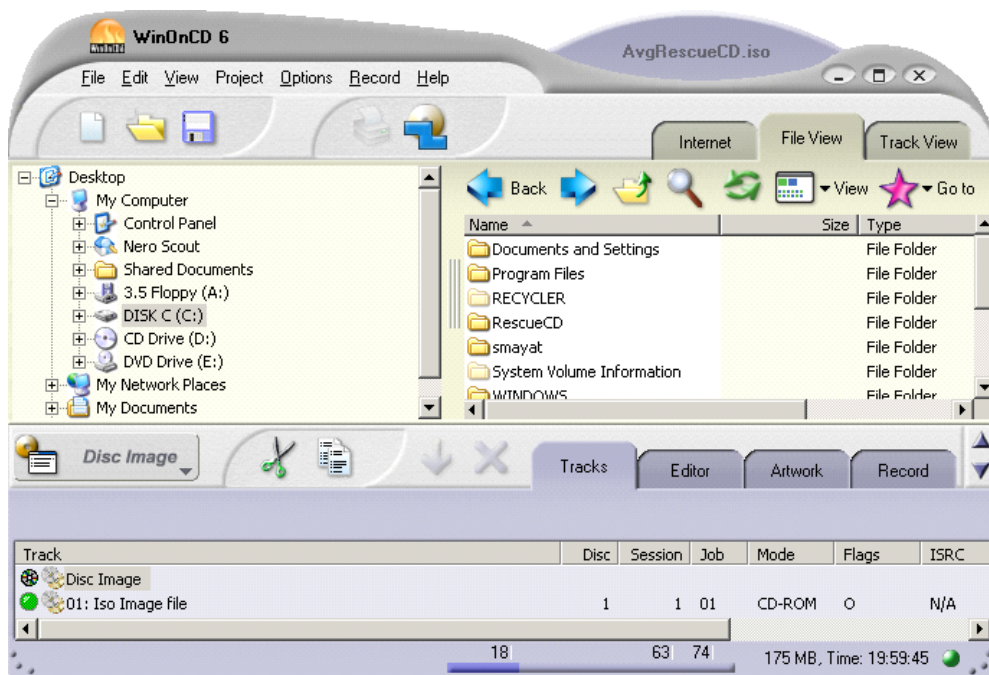
Steps to create a CD from the ISO image:

- (i) Insert a blank CD in your CD-RW drive.
- (ii) Start **WinOnCd 6.0** from its usual location at:

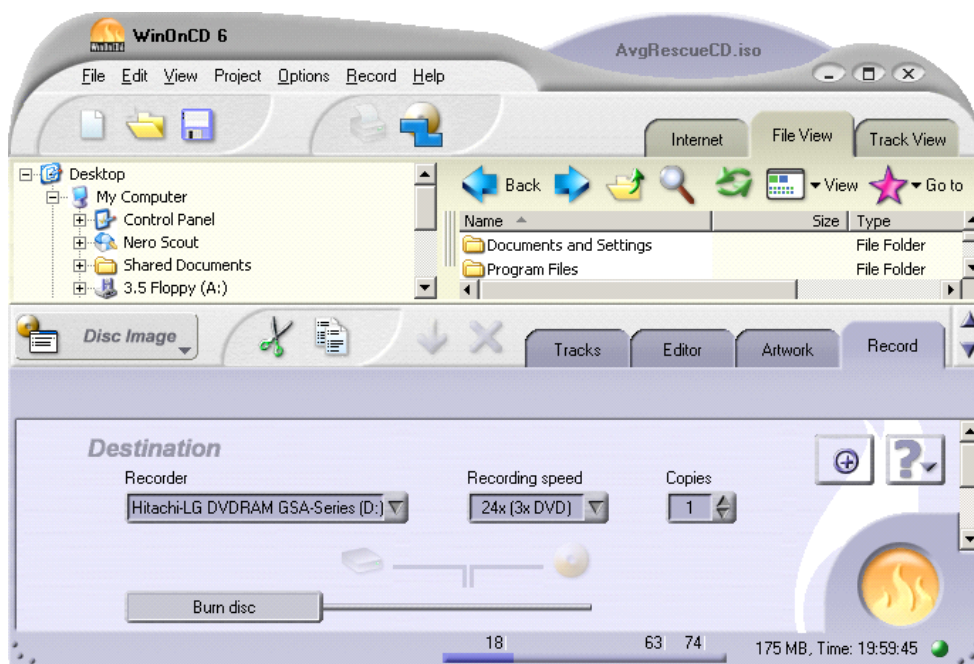
Start Menu/Programs/ Roxio/WinOnCD 6 Power Edition/ WinOnCD 6 Power Edition. From the Wizard menu select the option **Load file.**



(iii) Locate the ISO file and click **Open**. A new dialog will show up:



- (iv) Click **Record** tab where you can choose also additional burning options, and then click the yellow **Record** (fire icon) button located at the right bottom corner to start the burning process.



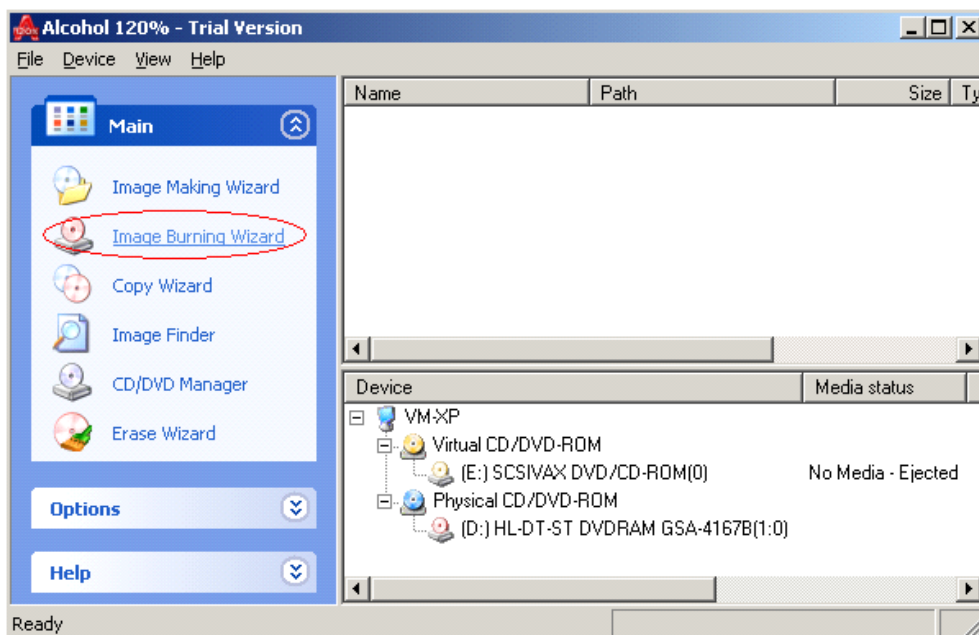
d) **Alcohol 120%**

A commercial burning tool that can be used for burning ISO images.

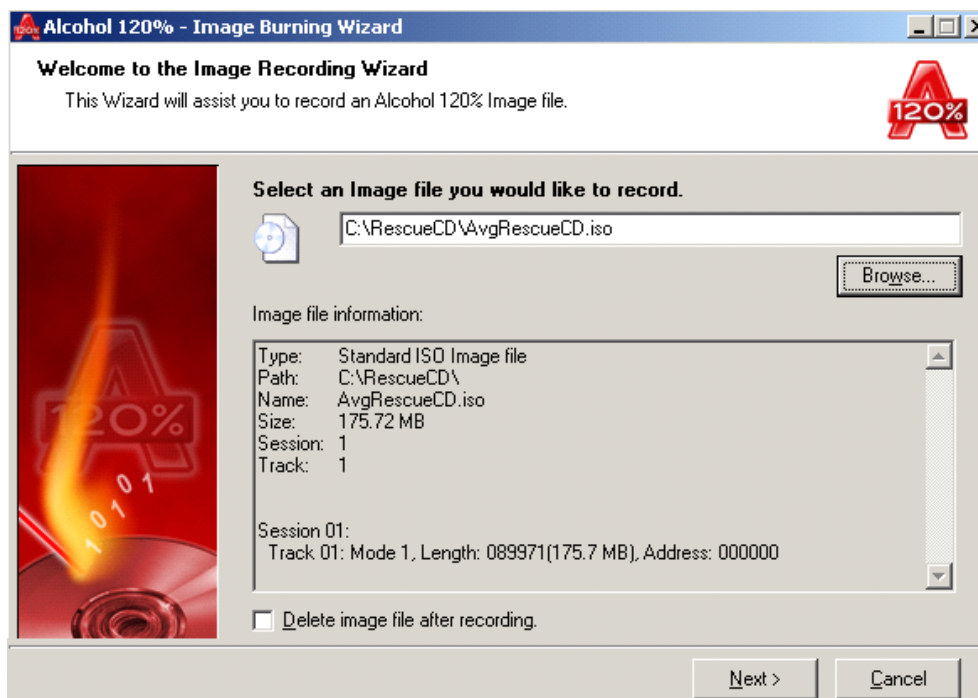
More information about this program can be found on the Alcohol Software web site at: <http://www.alcohol-soft.com/>.

Steps to create a CD from the ISO image:

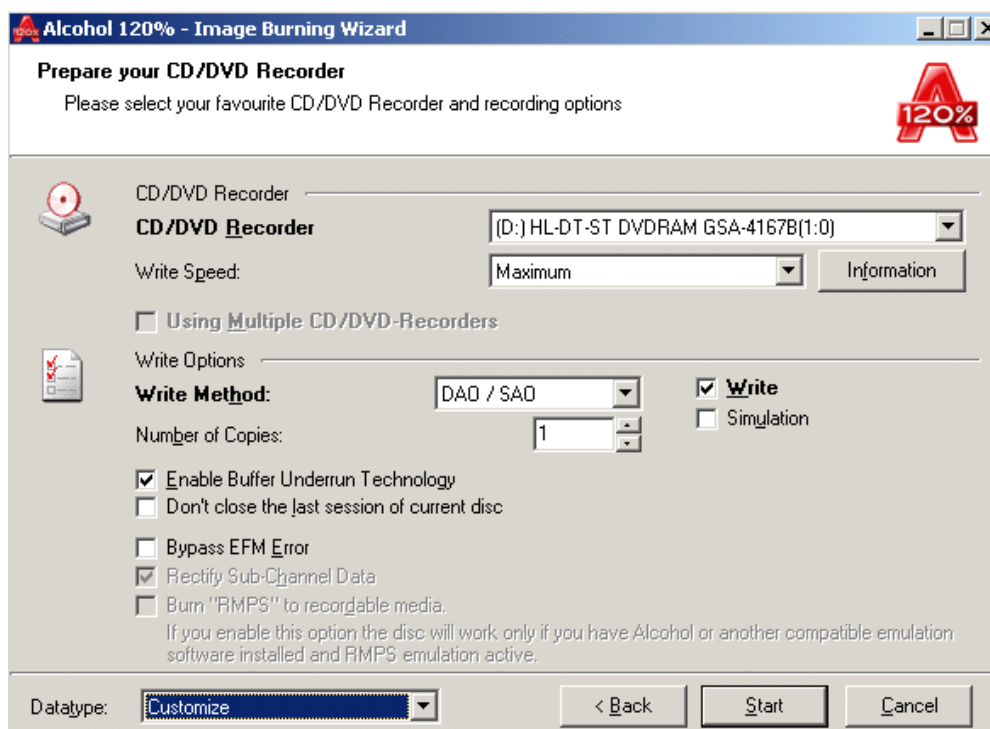
- (i) Insert a blank CD in your CD-RW drive.
- (ii) Start **Alcohol 120%** from its usual location under *Start Menu/Programs/Alcohol 120%/Alcohol 120%*
- (iii) From the left **Main** menu select **Image Burning Wizard**.



- (iv) New dialog **Image Burning Wizard** should show up. Click **Browse** button and locate the **AVG Rescue CD** image file. Click the **Next** button.



- (v) In this dialog you can choose additional parameters before burning (usually none are needed). Click **Start** to begin the burning process.

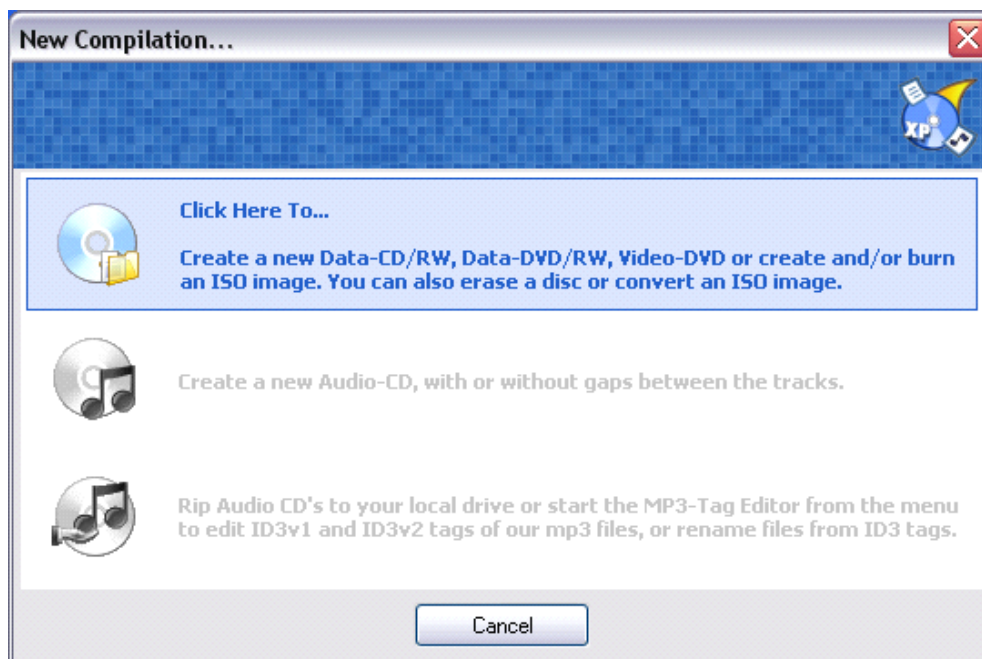



e) CDBurnerXP Pro

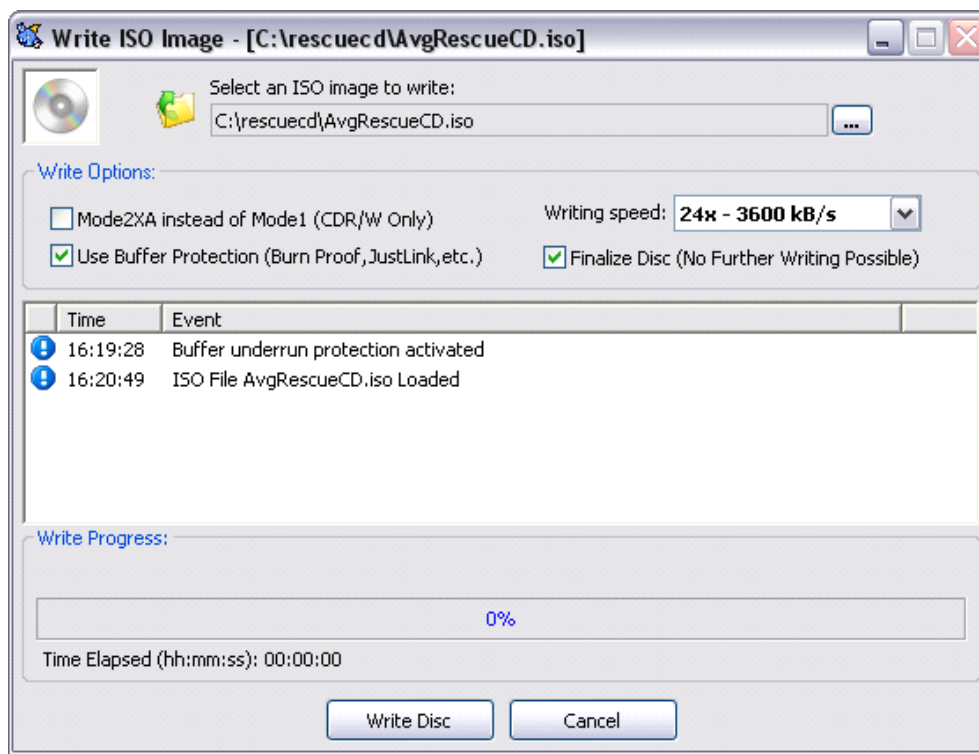
A freeware tool for burning CD/DVD discs. For more information visit program web site (<http://www.cdburnerxp.se/>).

Steps to create a CD from the ISO image:

- (i) Insert a blank CD in your CD-RW drive.
- (ii) Start **CDBurner XP Pro** from its usual location at *Start Menu/Programs/CDBurnerXP Pro 3/CDBurnerXP Pro 3*
- (iii) **New compilation** dialog should come up. Choose the first option as indicated on the screenshot below:



- (iv) From the upper menu select File/Write Disc Image from ISO File.
- (v) In the new Write ISO Image dialog click  button, locate the AVG Rescue CD iso file and select Open.



(vi) Click **Write Disc** button to start the burning process.

f) **CDBurn.exe - ISO CD-ROM burner tool**

You can also create an **AVG Rescue CD** by using the version of CDBurn.exe that is included in the *Windows Server 2003 Resource Kit Tools* (downloadable also from the following location: <http://www.microsoft.com/downloads/details.aspx?FamilyID=9d467a69-57ff-4ae7-96ee-b18c4790cffd&displaylang=en>). Although it is intended for MS Windows Server 2003, it can also be installed on MS Windows XP systems.

ISO CD-ROM Burner Tool (CDBurn) is a simple command-line tool that allows the user to burn CDs from ISO image files. Intended mainly for advanced users.

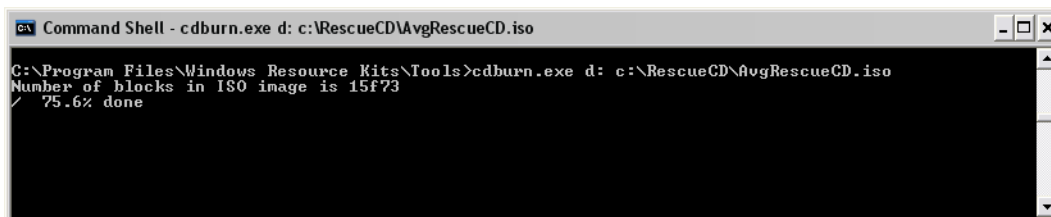
CDBurn can be started from its usual location under **Start menu/Windows Resource Kit Tools/Command Shell**.

To burn a CD from the image file *AvgRescueCD.iso* located at *c:\RescueCD* when the drive letter **d:** is assigned to your CD burner, type the following at

the command line:

```
cdburn.exe d: c:\RescueCD\AvgRescueCD.iso
```

Press ENTER. Output similar to the following will be displayed:



```

Command Shell - cdburn.exe d: c:\RescueCD\AvgRescueCD.iso
C:\Program Files\Windows Resource Kits\Tools>cdburn.exe d: c:\RescueCD\AvgRescueCD.iso
Number of blocks in ISO image is 15f73
/ 75.6% done
  
```

Wait until the burning process reaches 100%.

g) Magic ISO Maker

If you want to use this application for burning the ISO image, feel free to visit the URL below for a suitable guide regarding ISO image burning: <http://www.magiciso.com/tutorials/miso-burnwin.htm>

If none of the above mentioned guides will help you with burning the ISO image, you can either consult your burning software user manual, or visit the appropriate software manufacturer's web site for more information. We include a list of common burning software developers and their web site URLs and links to support pages.

| Company | Software | Company web site | Support |
|------------------|--------------------|---|----------------------------|
| Ahead | Nero Burning Rom | http://www.ahead.de | Click here |
| Roxio | Easy Media Creator | http://www.roxio.com | Click here |
| Roxio | WinOnCD | http://www.roxio.com | Click here |
| Alcohol software | Alcohol 120% | http://www.alcohol-soft.com/ | Click here |
| MagicISO, Inc. | MagicISO Maker | http://www.magiciso.com/ | Click here |

2.5. When should the AVG Rescue CD be used

The **AVG Rescue CD** should only be used in cases where the user suspects that the computer is not working correctly, i.e. the computer repeatedly shows certain non-standard behavior or displays various error messages. This includes (but is not limited to) for example:

- The computer cannot start (boot up) in the normal way.
- The computer can be started, but a viral infection or similar threat was not removable (even after system restart).
- The computer repeatedly shows non standard behavior (freezes, self restarts, etc.)

Of course the **AVG Rescue CD** is not a universal solution for all software issues that may occur. Also note that a number of problems may be caused by a failing hardware component, overheating of different components inside the computer and so on.

Therefore please use the **AVG Rescue CD** wisely and if you do not understand its functions properly, ask an advanced person with proper computer skills to assist you.

2.6. Before installation

Before you start using the **AVG Rescue CD**, we recommend that you back-up all your valuable data stored on your computer, (using removable backup media such as floppy disks, CDs or DVDs, USB Flash disks etc.). The backup will prove very useful in cases where it is not possible to recover the operating system. In such cases it may be necessary to reinstall the OS completely or change some hardware components, (as hardware failure is also a common reason for computer problems).

The **AVG** distributed with the **AVG Rescue CD** may not be completely up to date. Therefore it is recommended to prepare **AVG** update files before you start working with the **AVG Rescue CD**. Use one of the suggested update options below. Updating is necessary to ensure the most current virus base and optimal functionality of **AVG**.

- **Computer is connected to Internet**

If the computer, on which you are going to use the **AVG Rescue CD**, is connected to the Internet by LAN or certain types of CATV (cable Internet), i. e. is able to automatically receive network settings from the DHCP server, or you know the settings, then you do not have to follow the guidelines for

downloading offline update files. In such cases, updating is possible directly from the Internet after the **AVG Rescue CD** has been started.

Windows PE is based on MS Windows XP SP2 operating system and may not support most current drivers of the newest network cards. If you own a network card, that is not supported by MS Windows XP SP2, it is most likely that a network connection will not be possible to setup.

If you are not sure, if your Internet connection will be available, we recommend that you prepare the offline update files by following the simple steps below.

- **Offline preparation of update files**

Update files can be downloaded separately from the [AVG website](#), section **Support/Download**.

The update files will be available for the most current ISO file as well as for some recent versions. We always recommend using the latest version of the ISO file as well the latest update files.

Nevertheless, if you cannot create or obtain the newest ISO file, download only updates, that reflects your **AVG Rescue CD** version. Individual versions can be distinguished by the specific CD (DVD) label, or by their checksum (in case of downloadable .RAR archives). The checksum can be calculated in the **AVG Rescue CD** creator application (see chapter [2.3 for more details](#)).

Tip: *The media label can be found by inserting the CD (DVD) with **AVG Rescue CD** to your drive and then navigating to the **Windows Start/My Computer** and right-clicking on the CD-ROM (DVD-RAM, DVD-ROM or similar drive) letter and selecting **Properties** from the context menu.*

You can store the downloaded files on a portable removable medium, such as an external USB Flash disk or an external hard disk, CD, floppy disk etc. It can then be used for **AVG** update. If you store the update files on a USB Flash disk or another USB compatible device, it is essential that this device is already inserted and switched on before you start the **AVG Rescue CD** (ideally even before you start the computer).

- **Update from the local machine settings**

The **AVG Rescue CD** also allows updating from the original operating system settings of the computer that you are going to use the Rescue CD on. If you are sure, that **AVG** was installed on the original system and was regularly updated, then you can use this option for updating purposes (it will be

accessible to the update wizard that is able to search for all local installations of AVG and offer a list of all AVG installations found including details about the installed components).

Note: *This software contains a security feature that will cause end user's system to reboot without prior notification to the end user after 24 hours of continuous use.*

2.7. AVG Rescue CD startup and installation

In order to successfully start the **AVG Rescue CD**, it is necessary, that the computer's BIOS is able to correctly detect the boot CD in the CD-ROM device. In most cases it is enough to insert the CD into the CD-ROM device, turn on (or restart) the computer and wait until a message appears asking for confirmation about starting the system from CD. In reality either of the following situations may occur (a) or (b):

a) System was successfully started from the CD

If you successfully started the **AVG Rescue CD**, [AVG Rescue CD Update Wizard \(see chapter below\)](#) will be displayed to guide you through the updating process.

b) System was not possible to start from the CD

If no message is displayed, asking for confirmation to boot the system from the CD, it is likely that the BIOS (the internal computer system) is not correctly configured.

- o Newer motherboards allow users to directly select a device, which they want the system to load from. Usually it is called a *boot menu* and can be accessed by pressing a keyboard button or a shortcut key. Information on how to access this menu may be displayed on the screen during your computer startup. For more information please consult the user manual to your motherboard.
- o Another option is to access your computer BIOS directly and change the settings to allow booting from CD. **This operation is strictly intended for advanced users only!** Never try to change any BIOS settings, unless you completely understand their meaning. Always consult the user manual to your motherboard before changing any BIOS settings.

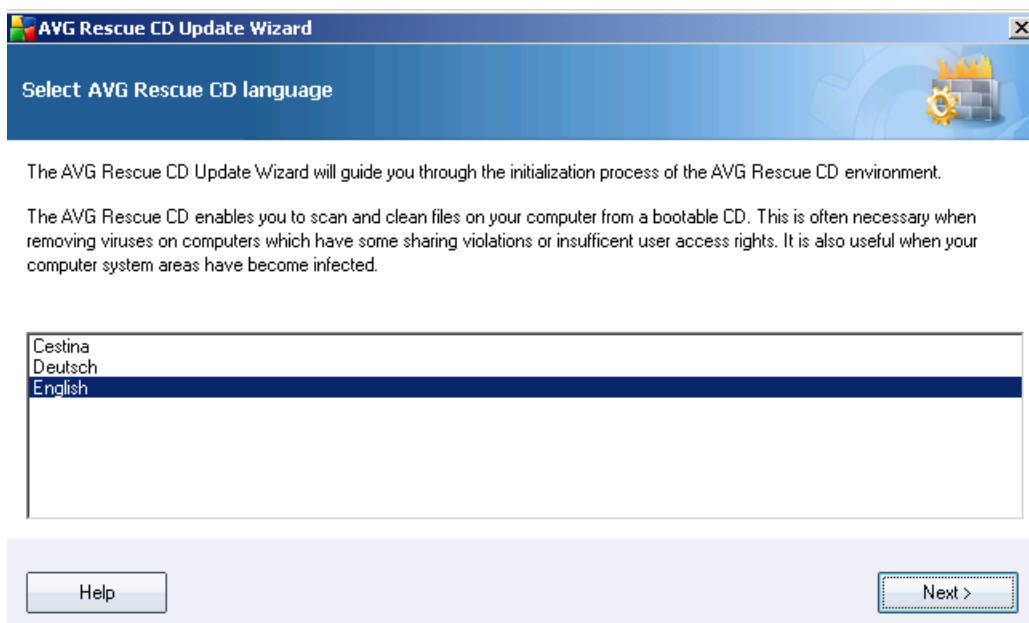
Note: *We are unfortunately unable to cover every single eventuality that may occur and how to solve it. Mainly because so many different motherboards and BIOS manufacturers exist. Therefore please always consult your motherboard user manual first, where you can find more information about how to boot*

operating system from a portable device (CD).

2.8. AVG Rescue CD Update Wizard

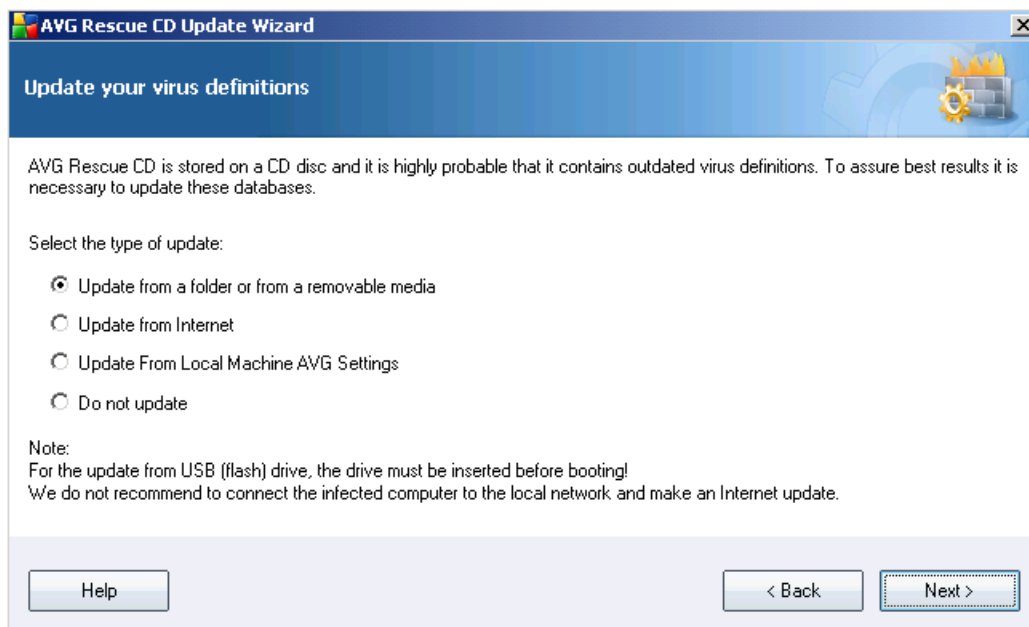
The Update Wizard will guide you through the **AVG** updating process and setting for network access.

a) Welcome



In the first dialog choose your language and click the **Next** button.

b) AVG Rescue CD update selection



From the list of options choose your preferred method for updating.

- o **Update from a folder or a removable media**

If you have already downloaded the offline update files (.bin) from the AVG web site and saved them to some external device, (which is already connected or inserted) or to a local folder, then you can use this option.

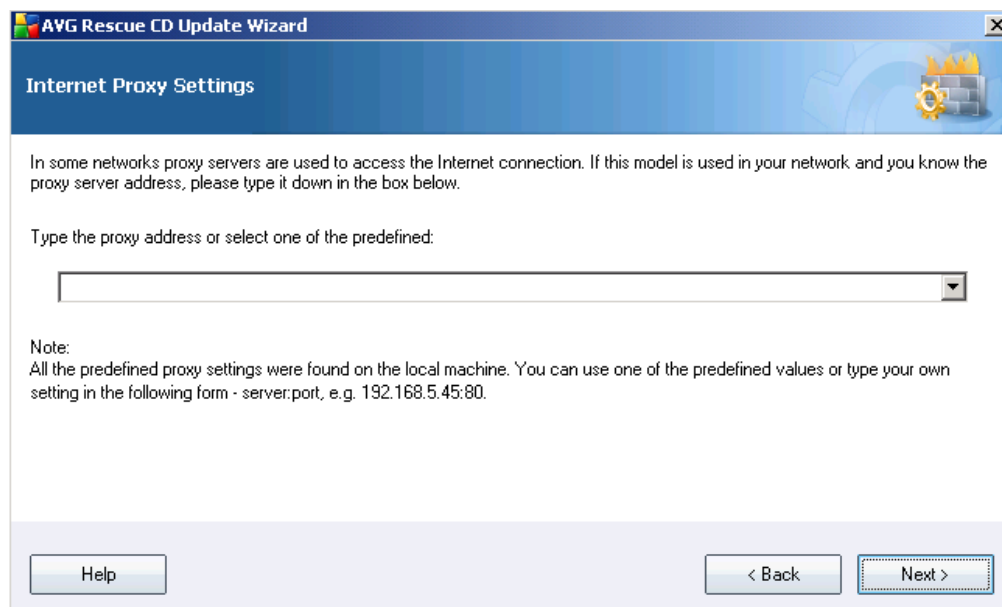
More information about preparation of update files can be found in the section [2.6 Before installation](#).

Note: *If you plan to update AVG from a USB Flash drive, then it is necessary to connect the device before you start your computer and run the AVG Rescue CD.*

- o **Update from Internet**

If your computer is connected to the Internet by LAN (local area network), or by a cable modem and **AVG Rescue CD** was able to detect your network interface card, you can try to use this option to download update files directly from the Internet.

In the next step you can choose additional proxy settings (if your Internet provider requires them for connection).



The **AVG Rescue CD** will try to search your computer for existing proxy settings. In any are found they will be listed in the box of predefined settings.

If none of the listed settings are correct, you can manually enter the address and port number of your desired proxy server.

For example:

– **192.168.5.45:80**

Or

– **Username:Password@192.168.5.45:80** (if username and password are needed for logging to the Proxy server)

If it is not necessary to set up a proxy server for successful connection, then keep to the default settings and press the **Next** button.

Note: *If some DHCP service is necessary for a dynamic assignment of an IP address, the communication with DHCP server may take some time to process the request (even tens of seconds). Potential error dialog may*

*not necessarily mean, that your network interface card was not found, but only that there was not enough time to receive a response from the DHCP server. Therefore, try to repeat the Update from Internet option directly from the main **AVG Rescue CD** dialog that will come up immediately after the Wizard is finished.*

You can check your network connection also by using IP Config application (available from the main dialog), or alternatively change the network settings. For more information, see chapters [6.5 AVG Ping](#) and [6.8 AVG IP Config](#).

- o **Update from Local Machine AVG Settings**

The **AVG Rescue CD** allows updating from the original **AVG** that was installed on the computer. If you are sure that **AVG** was installed on the original system and was regularly updated, then use this option for updating purposes. Update wizard is able to search for all local installations of AVG and choose the most current one.

Note: *If you own only a basic version of the AVG, i.e. without anti-spyware component, the update process will include only regular AVG components and anti-virus database. Anti-spyware database will not be updated. Therefore, the detection of newer spyware/malware threats will not be possible during scanning process. In such case, we recommend to update **AVG Rescue CD** from a removable media or the Internet, if available.*

- o **Do not update**

If you select this option, **AVG** will not be updated at all. However we do not recommend this option.

After you have successfully finished the Update Wizard, the **AVG Rescue CD** will attempt to update **AVG** and then launch the **AVG** program itself.

Note: *As the **AVG Rescue CD** is loaded within a temporary operating system, the updating process must be repeated every time the AVG Rescue CD is started.*

2.9. How to recognize network adapter drivers

Note: You can skip this chapter if you do not plan to add your custom network adapter drivers to **AVG Rescue CD** or if **AVG Rescue CD** can successfully detect your network connection.

Warning: *As the **AVG Rescue CD** is built on the 32bit Windows XP SP2 US version,*

*make sure you always use the appropriate 32bit (x86) drivers when adding new drivers! Otherwise **AVG Rescue CD** may become unstable!*

You can add your custom network adapter drivers to **AVG Rescue CD** using the **AVG Rescue CD Creator** utility. The process of adding the files is described in [chapter 2.3](#). To find out, which specific driver files you should add, follow the steps below.

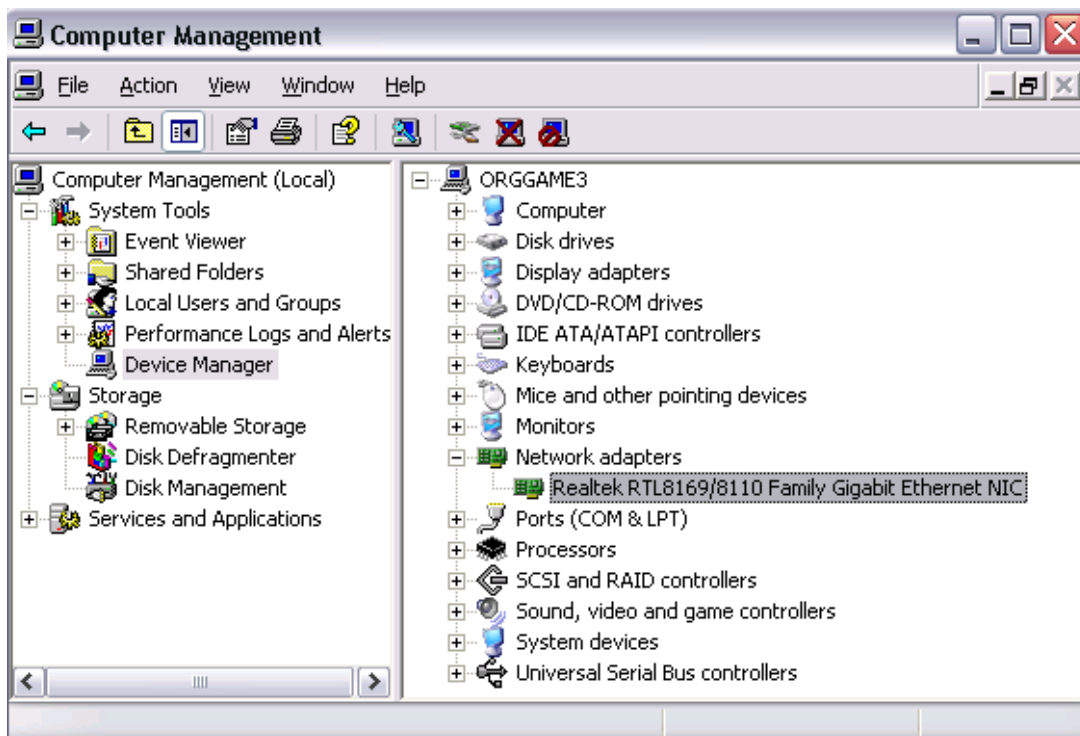
This procedure applies only to cases, when you are going to use **AVG Rescue CD** on the same computer (identical hardware), from which you are using the network adapter drivers. If you plan to use **AVG Rescue CD** on a computer with different hardware equipment, the added drivers will most likely not work properly.

a) First navigate to the Windows **Device Manager**.

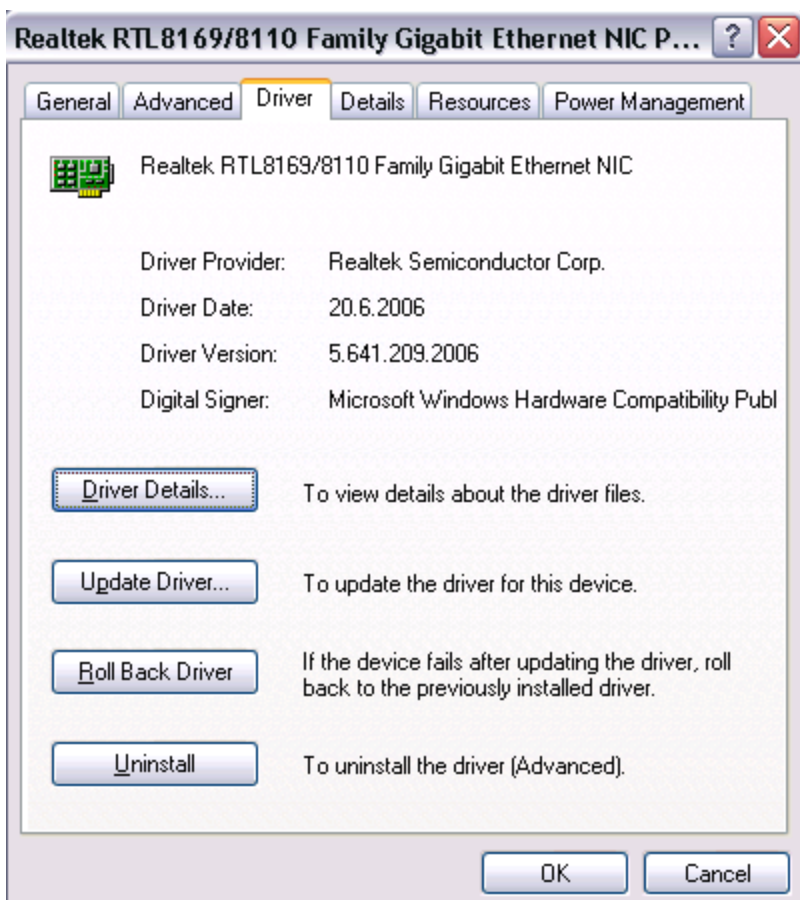
Click the Windows **Start**, right-click **My Computer** and select **Manage**. In the new dialog select **Device Manager** from the **System Tools** branch.

b) In the right part of the screen navigate to the **Network adapters** item. Here you will find a list of available network adapters. If there are multiple items listed, look for the adapter you use for Internet connection (if you are connecting via LAN/WAN network, look for names like Ethernet NIC, LAN CARD, LAN Adapter, Ethernet Controller etc.).

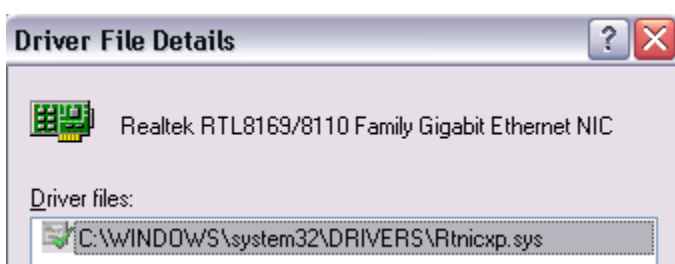
If you cannot recognize your network adapter from multiple choices, repeat the steps c) to d) for all the available network cards.



- c) Right-click the chosen network adapter and select **Properties**. A new dialog, similar to the sample one, will appear:



Select the **Driver** tab and click the **Driver Details** button. In the **Driver files** section you will see a list of files and their locations.



Navigate to the mentioned locations and copy all files to a separate folder or just note down the file name and location.

- d) Now you need the .inf file. You can find it in the **c:\Windows\Inf** location,

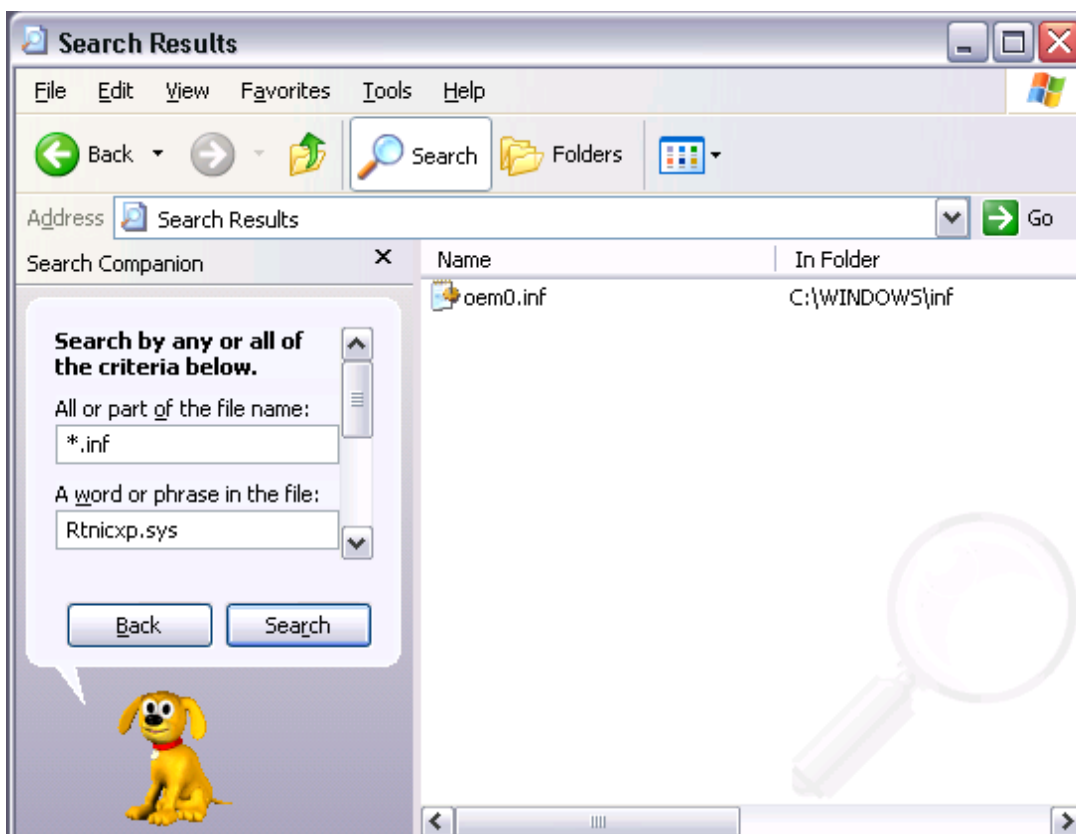
where **c:** is your system drive, and **\Windows** is your Windows installation directory. There are several .inf files in this directory, so you need to find the one, that contains the driver file name that you found in the previous step (in our case **Rtnicxp.sys**).

The easiest way to search for the .inf file is to press the Windows **Start** button, select **Run** and type in:

c:\windows\inf

Assuming that this is your windows location and system drive. Confirm your choice by pressing Enter.

A new dialog will appear, press F3 to open the search panel and if asked, select **All files and folder**. There should be two fields **All or part of the file name** and **A word or phrase in the file**. To the first one type in ***.inf** and to the second one type in the file name of your driver. Once ready, press the **Search** button. You should experience some results:



From the result dialog box select all files found and copy them to a separate directory (different from the one you placed the previous driver file into), or just note down the name of the file.

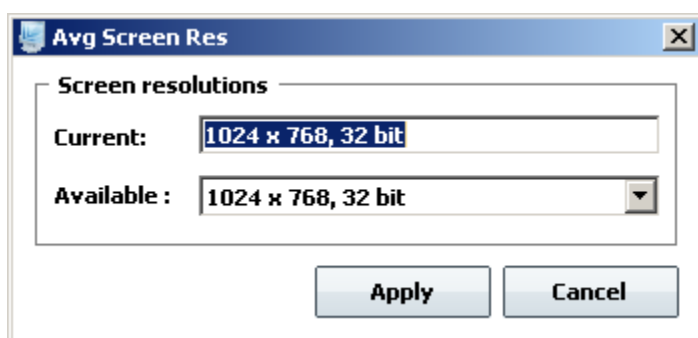
Note: *If there are no results listed, make sure you typed in the name of the driver file correctly, or try to use only part of the driver name.*

- e) You can repeat the process for all other files that you found via the **Driver file details** dialog, if necessary, but usually one driver uses only one .inf file.
- f) Once you have finished searching for the appropriate files, go back to the **AVG Rescue CD creator** application and continue with the ISO file compilation. More can be found in the [chapter 2.3](#).

3. After Startup

After successful startup of the **AVG Rescue CD**, **AVG** should be automatically started.

As **AVG Rescue CD** is built on a specific Windows platform, a low screen resolution is used by default to avoid graphics adapters compatibility issues. If you experience difficulties using application with the default screen resolution, you may change it by navigating to the upper menu **File** and selecting **Utilities on CD/Screen** item. A new dialog will appear:



The **Current** section shows the actual screen resolution, the **Available** section allows you to choose from modes supported by your graphics adapter. Although you may be able to select a very high resolution as well, we strongly recommend, that you stick to regular 800x600 or 1024x768 screen resolutions.

Warning: *We strongly recommend that you consult your monitor user guide and check, whether your monitor is able to handle the chosen screen resolution! The main reason is, that in case of some older monitor types, selecting a very high screen resolution may cause a device malfunction (in rare cases).*

If you accidentally select a resolution, that is higher than your VGA adapter can handle and the display will become corrupted or unreadable, simply wait five seconds, **AVG Rescue CD** will automatically change the resolution back to the default value.

To confirm your change click the **Apply** button. The screen resolution will then change and button name will change to **OK**. If the screen looks according to your needs, press the **OK** button to finally confirm your change and close the dialog by selecting **Cancel** button..

Note: *If you choose a very high screen resolution, you may experience slower responses from the user interface. Therefore we strongly recommend using lower*

screen resolutions, if possible.

As a next step, we recommend to virus scan the computer by using the standard predefined test settings. You can find more information about testing in the [5. Scans overview](#) chapter.

There are several additional tools that can also be useful during the system recovery process. However their usage is intended for advanced users only. You can find a more detailed description in chapter [6 – AVG Rescue CD tools](#).

Note: Depending upon your version of **AVG Rescue CD**, there might be a temporary folder **AVG_Rescue_Temp** created during **AVG Rescue CD** startup. Once you finish working with the **AVG Rescue CD** (i.e. when you successfully boot up your repaired operating system), you can freely delete this temporary folder and all its content.

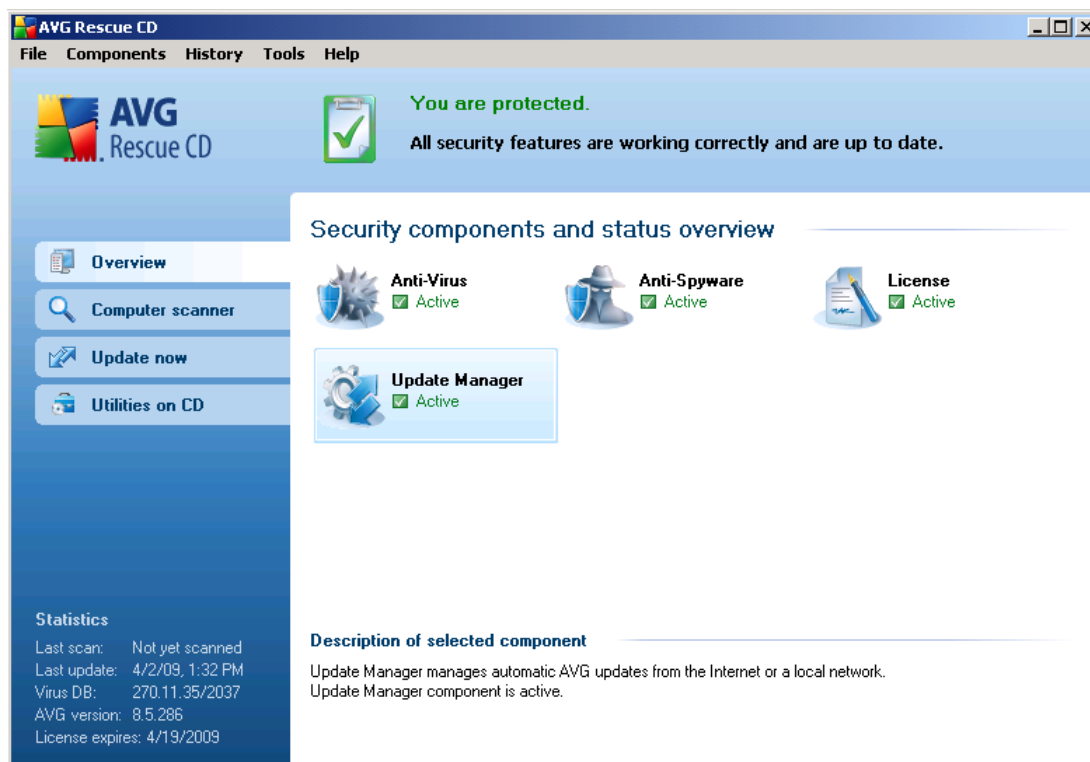
AVG Rescue CD uses virtual (RAM) disk Z to access the temporary folder. Do not change any content of the temporary folder or the Z drive! This drive and folder must remain untouched otherwise **AVG Rescue CD** may not work properly.

4. AVG Rescue CD – Main Screen

The version of **AVG** that is distributed on the **AVG Rescue CD** offers a limited number of functions, compared to the full standalone Professional version for regular operating systems. You can only use the basic testing interface, which allows access to updates, computer system testing for viruses or malware and elementary configuration. **AVG** is able to look for threats on various drives and in the registry entries as well.

Also you can run additional [AVG Rescue CD tools \(chapter 6\)](#) from this interface (AVG Command Line, freeCommander, Map Network Drive, AVG Ping, AVG Registry Editor, AVG IP Config, AVG Scan Disk and AVG Notepad).

Note: When you close the main AVG Rescue CD dialog window, your computer will be restarted!



The main interface offers the following main buttons:

- **Overview** - contains list of all available components.

- [**Computer scanner**](#) – will run a complete computer test.
- [**Update now**](#) – will allow you to update the AVG virus definitions.
- [**Utilities on CD**](#) - will open the list of all available utilities and tools.

4.1. Menu File

This menu contains the following items:

- **Utilities on CD** - contains list of available tools. For more information [see chapter 6.](#)
- **Reboot computer** - Quits the application and restarts the computer. Alternatively you can use Alt+F4 keyboard shortcut to execute this action.

4.2. Menu Components

This menu contains the following items:

- **System overview** - contains the basic overview of security components.
- **Anti-Virus** - opens the Anti-Virus component properties (state, database version etc.).
- **Anti-Spyware** - opens the Anti-Spyware component properties (state, database version etc.).
- **License** - opens the License component overview (license number/type/expiration date etc.).
- **Update Manager**

Opens the Update Manager component overview (with statistics and update status).

Use the bottom **Update now** button to launch an automatic update. To start the automatic Update wizard instead, which will guide you through the update process, use the **Update now** link located in the left menu.

For further information on update possibilities refer to chapter [AVG Rescue CD Update Wizard.](#)

4.3. Menu History

This menu contains the following items:

- [Scan results](#)
- [Virus Vault](#)
- [Event history log](#)

4.3.1. Scan Results

The **Scan results overview** dialog is accessible from the menu History via the **Scan results** item. The dialog provides a list of all previously launched scans and information of their results. More information about this topic can be found in the [Scan Overview/Scan Results](#) chapter.

4.3.2. Virus Vault

Available through upper menu **History/Virus Vault**.

Virus Vault is a safe environment for the management of suspect/infected objects detected during AVG tests. Once an infected object is detected during scanning, and AVG is not able to heal it automatically, you are asked to decide what is to be done with the suspect object. The recommended solution is to move the object to the **Virus Vault** for further treatment.

The **Virus vault** interface opens in a separate window and offers an overview of information on quarantined infected objects:

- **Infection type** - distinguishes finding types based on their infective level (*all listed objects can be positively or potentially infected*)
- **Virus Name** - specifies the name of the detected infection according to the [Virus encyclopedia](#) (online)
- **Path to file** - full path to the original location of the detected infectious file
- **Original object name** - all detected objects listed in the chart have been labeled with the standard name given by AVG during the scanning process. In case the object had a specific original name that is known (*e.g. a name of an e-mail attachment that does not respond to the actual content of the attachment*), it will be provided in this column.

- **Date of storage** - date and time the suspected file was detected and removed to the **Virus Vault**

The following control buttons are accessible from the **Virus Vault** interface:

- **Restore** - removes the infected file back to its original location on your disk
- **Restore As** - in case you decide to move the detected infectious object from the **Virus Vault** to a selected folder, use this button. The suspicious and detected object will be saved with its original name. If the original name is not known, the standard name will be used.
- **Delete** - removes the infected file from the **Virus Vault** completely
- **Send to analysis** - sends the suspected file for deep analysis to the AVG virus labs
- **Empty Vault** - deletes all stored virus samples.

4.3.3. Event history log

Accessible through the upper menu **History/Event History Log**.

Within this section you can find a summary of important events that occurred during **AVG** operation.

Event History Log records the following types of events:

- Information about updates of **AVG**
- Test start, end or stop (including automatically performed tests)
- Events connected with virus detection (by scanning) including occurrence location
- Other important events

Pressing the **Empty list** button will allow you to delete the history log. To view the most up to date records, use the **Refresh list** button.

4.4. Menu Tools

This menu contains the following items:

- **Scan Computer** - starts the complete scan of your computer. For more information refer to chapter [Scans Overview](#).

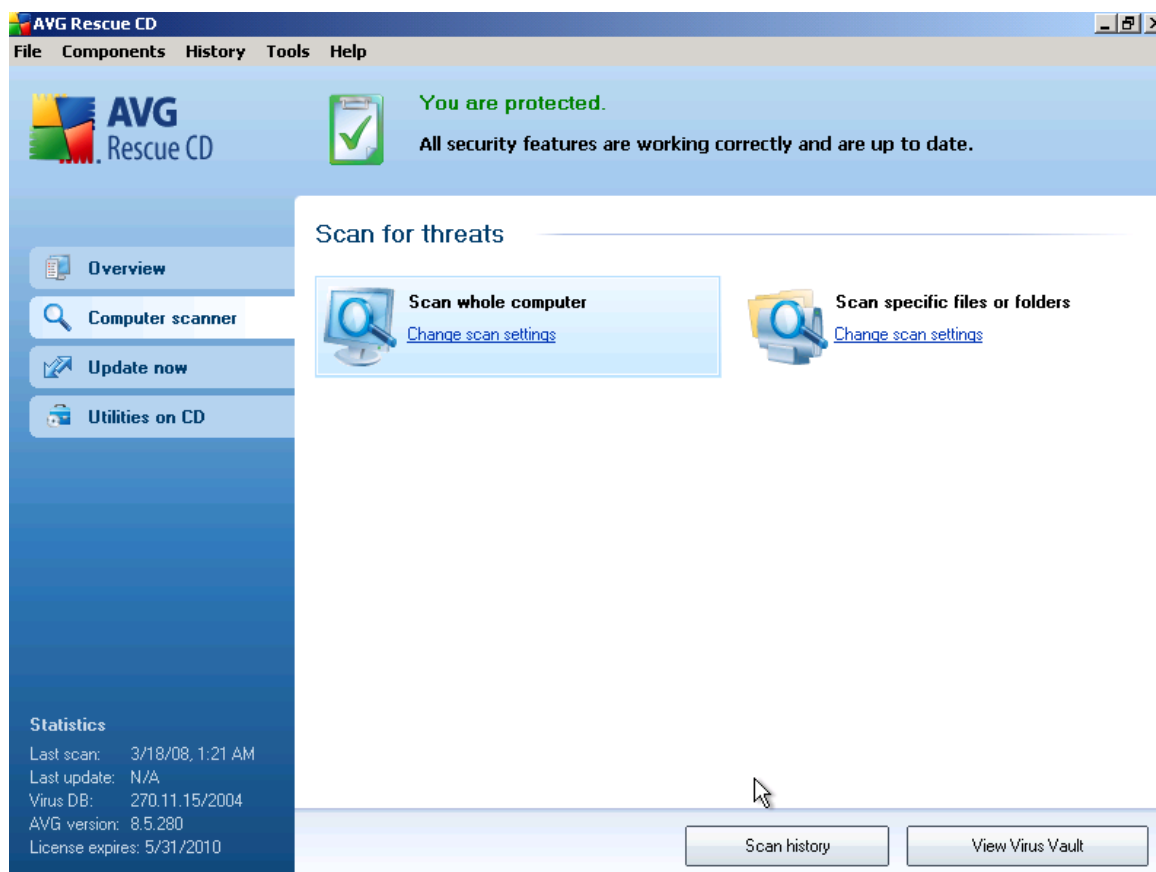
- **Scan selected folder** - allows to choose a specific folder for scanning. For more information refer to chapter [Scans Overview](#).
- **Scan file** - allows to choose a specific file for scanning. For more information refer to chapter [Scans Overview](#).
- **Update** - starts the [Update wizard](#).
- **Update from directory** - starts the update based on existing update files placed in an directory.

4.5. Menu Help

The **Contents** menu item launches new window with structured quick help for the **AVG Rescue CD**.

The **About AVG** menu item launches a new dialog window containing the current AVG Program information (contact information). The information is divided onto several tabs, where you can find information about program version, your system information, license agreement and contact details.

5. Scans Overview



In the AVG edition for **AVG Rescue CD**, the following tests are available:

- [**Scan whole computer**](#)
- [**Scan specific files or folders**](#)

The tests can be started either from the upper menu **Tools** or by choosing **Computer scanner** quick link in the left menu of the main screen

You can change the test configuration according to your own needs. However, for less experienced computer users it is recommended to use the default test configuration.

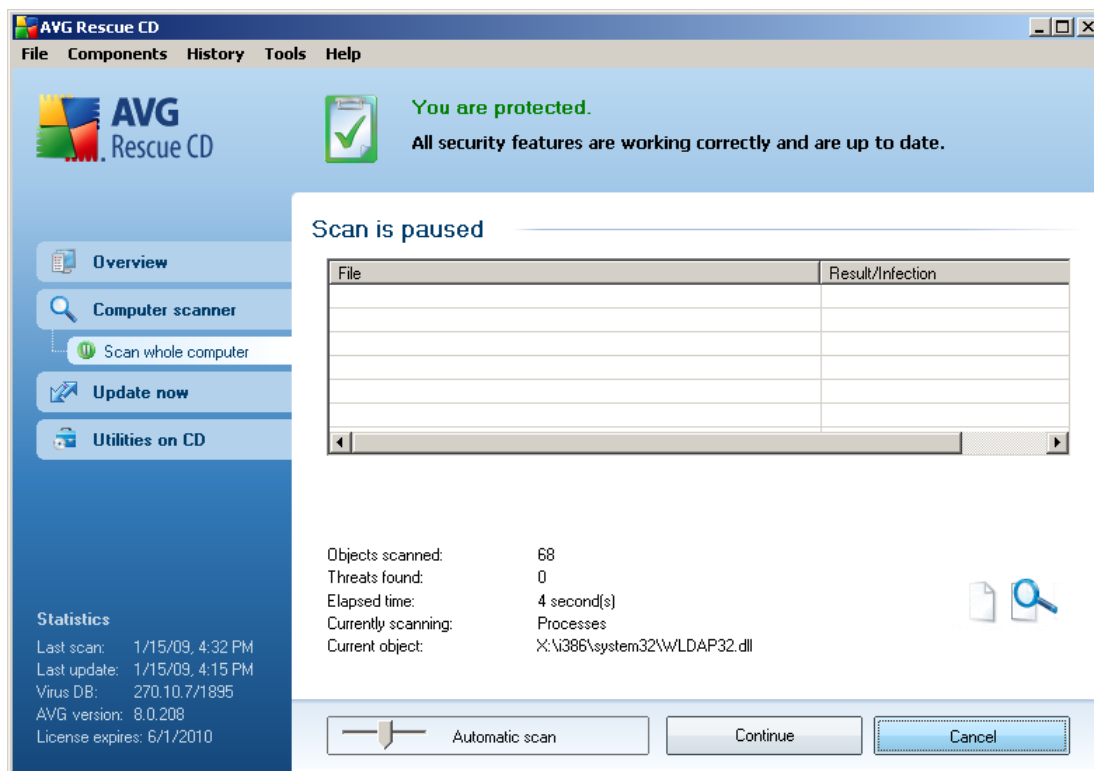
Control buttons available within the scanning interface are the following:

- **Scan history** - displays the [Scan results overview](#) dialog with the entire history of scanning
- **View Virus Vault** - opens a new window with the [Virus Vault](#) - a space where detected infections are quarantined

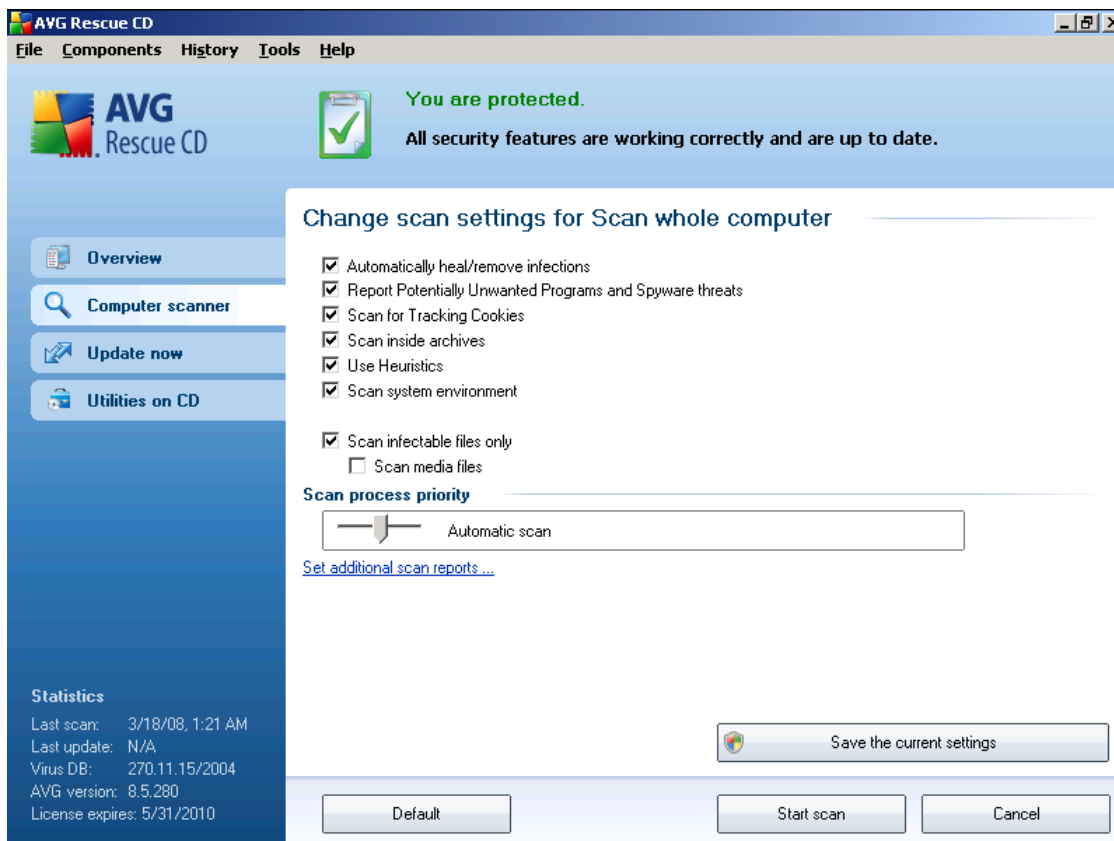
5.1. Scan Whole Computer

Scan whole computer - scans your entire computer for possible infections and/or potentially unwanted programs. This test will scan all hard drives of your computer, will detect and heal any virus found, or remove the detected infection to the [Virus Vault](#).

The **Scan whole computer** can be launched directly from the main interface by clicking on the scan's icon. No further specific settings have to be configured for this type of scan, the scanning will start immediately within the **Scan is running** dialog (see screenshot). The scanning can be temporarily interrupted (**Pause**) or canceled (**Cancel**) if needed.



You have the option of editing the predefined default settings of the **Scan whole computer**. In the list of available scans press the **Change scan settings** link to get to the **Change scan settings for Scan whole computer** dialog. **It is recommended to keep to the default settings unless you have a valid reason to change them!**



Here you will find a list of scanning parameters that can be optionally switched on/off. By default, most parameters are switched on and the functionality will be applied during scanning. Unless you have a valid reason to change these settings we recommend to keep to the pre-defined configuration:

- **Automatically heal/remove infection** - (switched on, by default): if a virus is identified during scanning it can be healed automatically if a cure is available. In case the infected file cannot be healed automatically, or if you decide to switch off this option, you will be notified upon a virus detection and will have to decide what to do with the detected infection. The recommended action is to remove the infected file to the [Virus Vault](#).

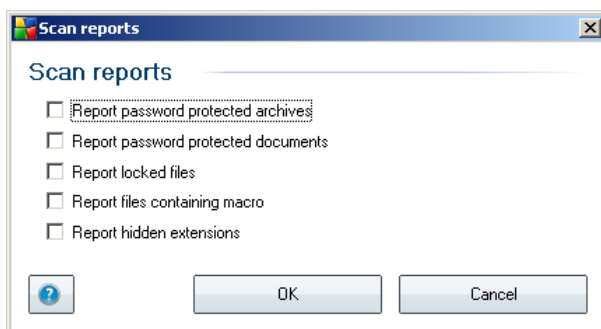
- **Scan Potentially Unwanted Programs and Spyware threats** - (switched on, by default): this parameter controls the Anti-Virus functionality that allows detection of potentially unwanted programs (*executable files that can run as spyware or adware*) and these can then be blocked, or removed;
- **Scan for Tracking Cookies** - (switched on, by default): this parameter of the Anti-Spyware component defines that cookies should be detected during scanning (*HTTP cookies are used for authenticating, tracking, and maintaining specific information about users, such as site preferences or the contents of their electronic shopping carts*) ;
- **Scan inside archives** - (switched on, by default): this parameters defines that the scanning should check all files even if these are packed inside some type of archive, e.g. ZIP, RAR, ...
- **Use Heuristics** - (switched on, by default): heuristic analysis (*dynamic emulation of the scanned object's instructions in a virtual computer environment*) will be one of the methods used for virus detection during scanning;
- **Scan system environment** - (switched on, by default): scanning will also check the system areas of your computer;
- **Scan infectable files only** - with this option switched on, files that cannot get infected will not be scanned. These can be for instance some plain text files, or some other non-executable files.
- **Scan media files** - check to scan media files (Video, Audio etc.). If you leave this box unchecked, it will reduce the scanning time even more, because these files are often quite large and are not too likely to be infected by a virus.

Within the **Scan process priority** section you can further specify the desired scanning speed dependent on system resource usage. By default, this option value is set to the medium level of automatic resource usage. If you want the scanning to run faster, it will take less time but system resources usage will increase significantly during its run, and will slow down your other activities on the PC (*this option can be used when your computer is switched on but nobody is currently working on it*). On the other hand, you can decrease system resources usage by extending the scanning duration.

Note: By default, the scanning configuration is set up for optimum performance. Unless you have a valid reason to change the scanning settings it is highly recommended to stick to the predefined configuration. Any configuration changes

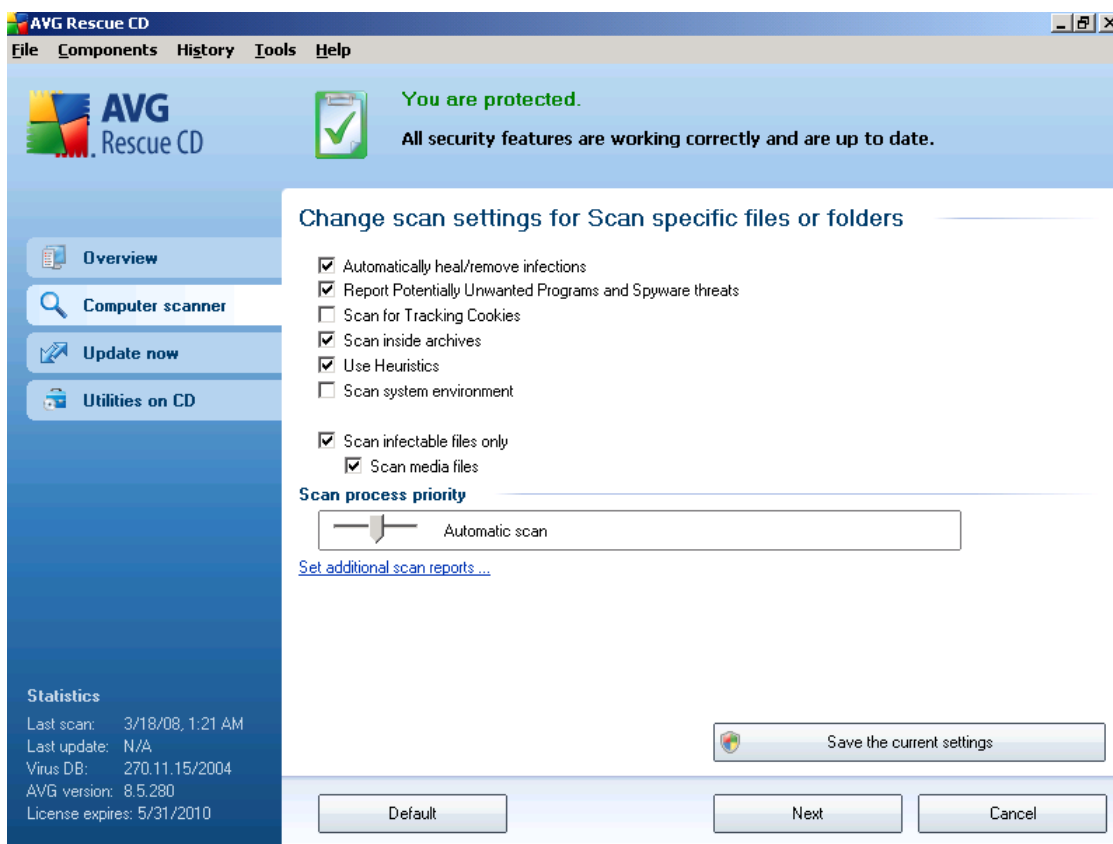
should be performed by experienced users only.

- **Set additional scan reports** - the link opens a new **Scan Reports** dialog where you can select what types of possible findings should be reported:



5.2. Scan Specific FILES or Folders

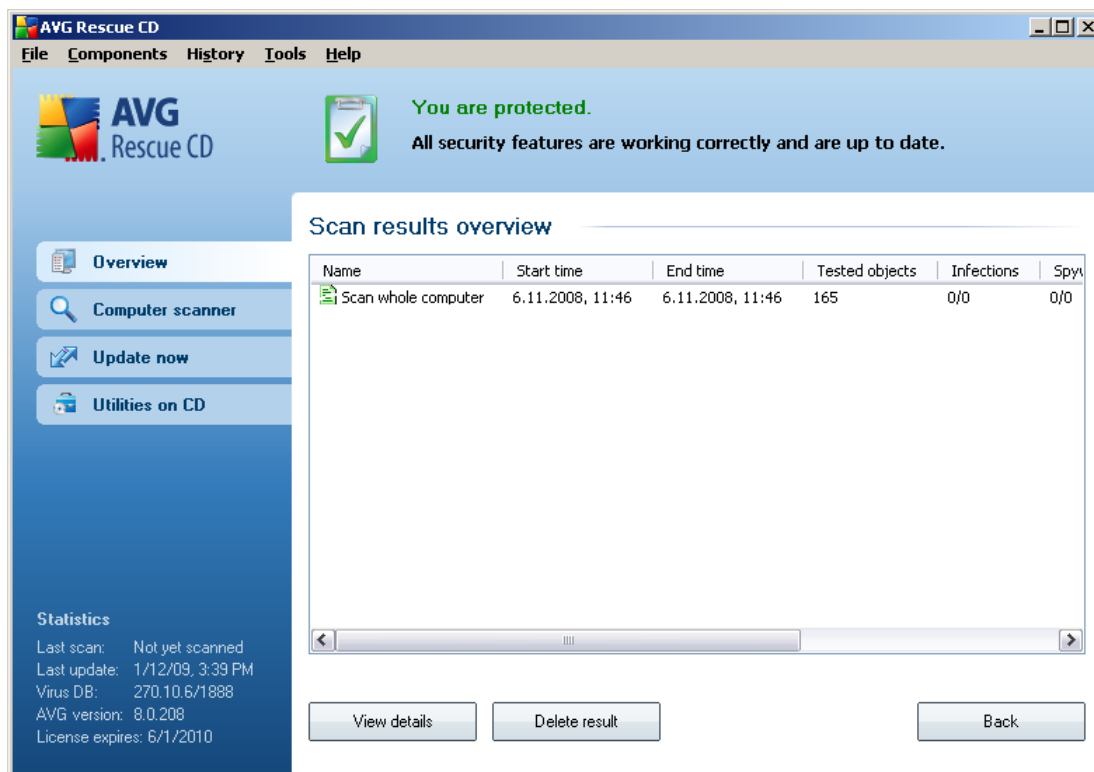
The editing interface for **Scan specific files or folders** is identical to the [Scan Whole Computer](#) editing dialog. All configuration options are the same; however, the default settings are more strict for the **Scan whole computer**:



All parameters set up in this configuration dialog apply only to the areas selected for scanning with the **Scan of specific files or folders!**


Note: For a description of specific parameters please consult the chapter [Scans Overview / Scan Whole Computer](#).


5.3. Scan Results




The **Scan results overview** dialog will appear once each scan is completed and is also accessible from the menu History via the **Scan results** item. The dialog provides a list of all previously launched scans and information of their results:

- **Name** - scan designation; it can either be the name of one of the predefined scans, or a name you have given to your own scheduled scan. Every name includes an icon indicating the scan result:

 - green icon informs there was no infection detected during the scan

 - blue icon announces there was an infection detected during the scan but the infected object was removed automatically

 - red icon warns there was an infection detected during the scan and it could not be removed!

Each icon can either be solid or cut in half - the solid icons stands for a scan

that was completed and finished properly; the cut-in-half icon means the scan was canceled or interrupted.

Note: For detailed information on each scan please see the [Scan Results](#) dialog accessible via the **View details** button (in the bottom part of this dialog).

- **Start time** - date and time when the scan was launched
- **End time** - date and time when the scan ended
- **Tested objects** - number of objects that were checked during scanning
- **Infections** - number of virus infections detected / removed
- **Spyware** - number of spyware detected / removed
- **Scan log information** - information relating to the scanning course and result (typically on its finalization or interruption)

The control buttons for the **Scan results overview** dialog are:

- **View details** - this button is only active if a specific scan is selected in the above overview; press it to switch to the [Scan results](#) dialog to view detailed data on the selected scan
- **Delete result** - this button is only active if a specific scan is selected in the above overview; press it to remove the selected item from the scan results overview
- **Back** - switches back to the default dialog of the AVG scanning interface.

5.4. Scan Results Details

If in the **Scan Results Overview** dialog a specific scan is selected, you can then click the **View details** button to switch to the **Scan Results** dialog providing detailed data on the course and result of the selected scan.

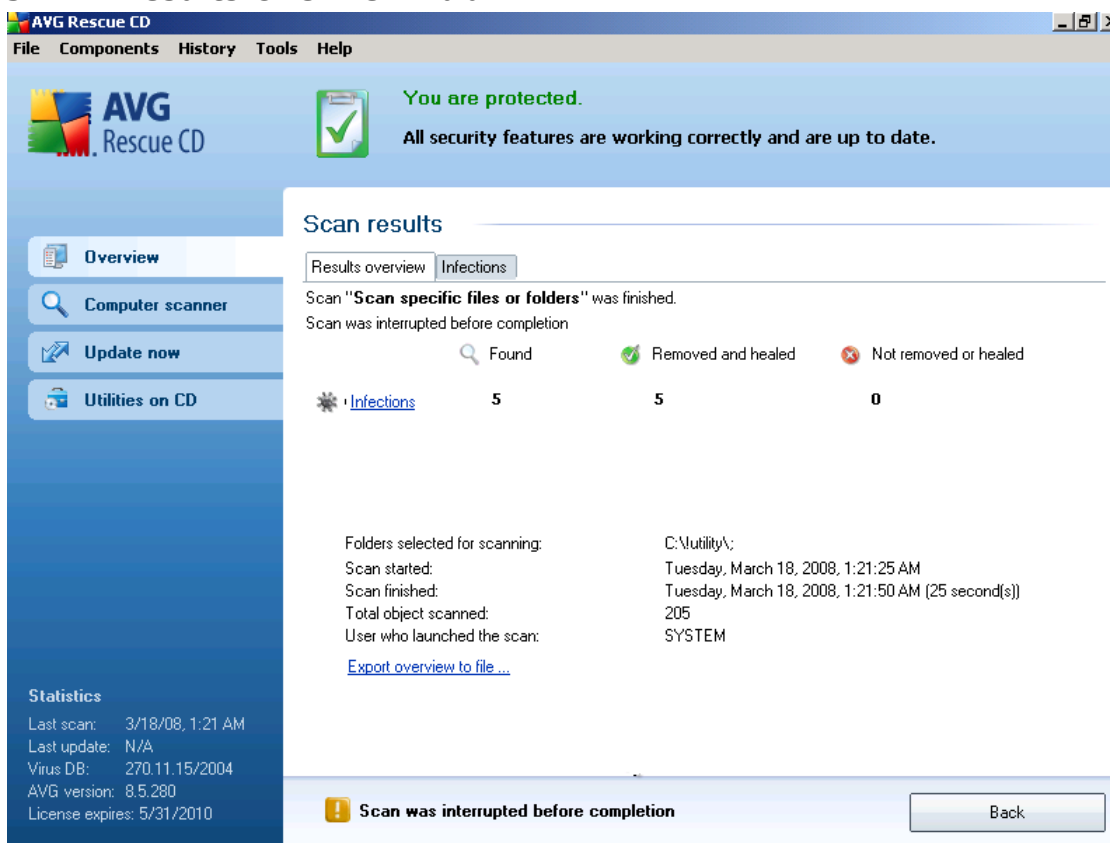
The dialog is further divided into several tabs:

- [Results Overview](#) - this tab is displayed at all times and provides statistical data describing the scan progress
- [Infections](#) - this tab is displayed only if a virus infection was detected during

scanning

- **Spyware** - this tab is displayed only if spyware was detected during scanning
- **Warnings** - this tab is displayed only if some objects unable to be scanned were detected during scanning
- **Information** - this tab is displayed only if some potential threats were detected but these cannot be classified as any of the above categories; then the tab provides a warning message on the finding

5.4.1. Results Overview Tab



The screenshot shows the AVG Rescue CD interface. At the top, a status bar indicates "You are protected. All security features are working correctly and are up to date." Below this, the "Scan results" section is active, showing a summary of a scan that was interrupted. The summary includes a table of findings:

| Found | Removed and healed | Not removed or healed |
|-------|--------------------|-----------------------|
| 5 | 5 | 0 |

Additional scan details provided include:

- Scan started: Tuesday, March 18, 2008, 1:21:25 AM
- Scan finished: Tuesday, March 18, 2008, 1:21:50 AM (25 second(s))
- Total object scanned: 205
- User who launched the scan: SYSTEM

A warning message at the bottom states "Scan was interrupted before completion" with a "Back" button.

On the **Scan results** tab you can find detailed statistics with information on:

- detected virus infections / spyware

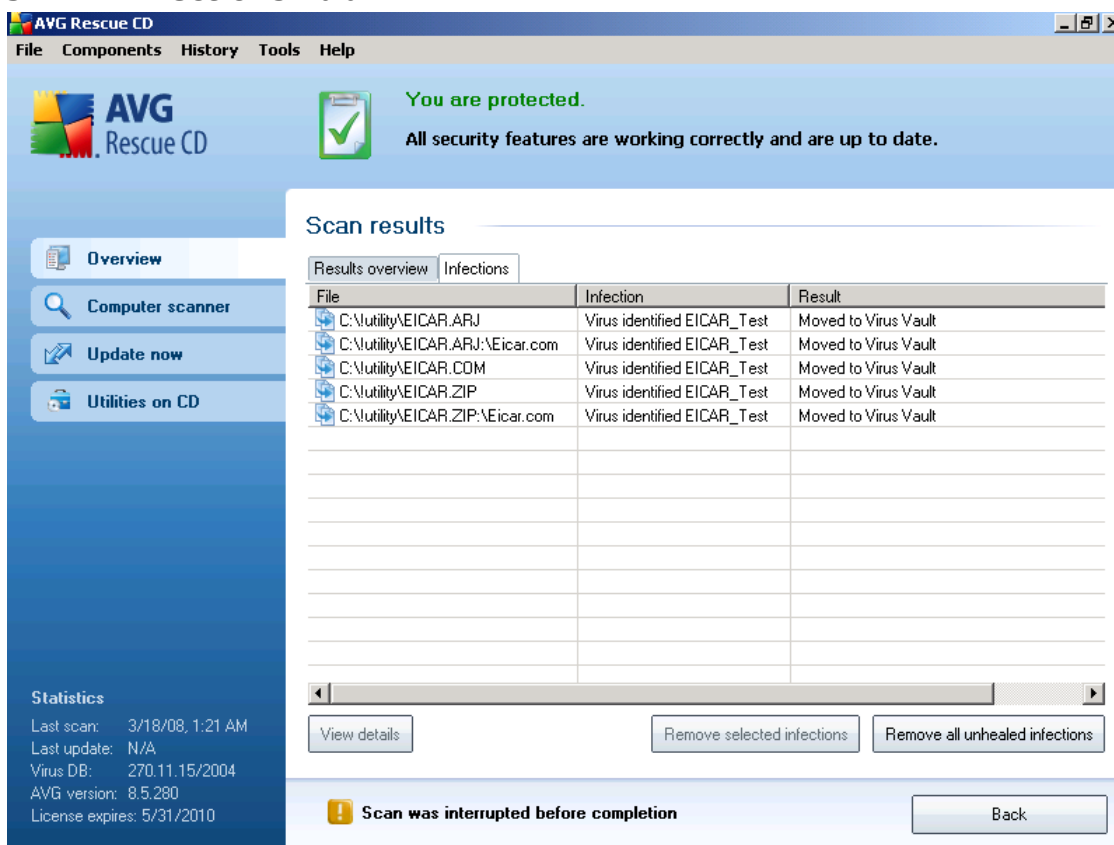
- removed virus infections / spyware
- the number of virus infections / spyware that cannot be removed or healed

In addition you will find information on the date and exact time of the scan launch, on the total number of scanned objects, on the scanning duration and the number of errors that have occurred during scanning.

If there were infections found during the test that were not deleted, you will experience the **Remove all unhealed infections** button, that can be used to delete all infections that could not be healed.

The **Back** button returns to the [Scan results overview](#) dialog.

5.4.2. Infections Tab



The screenshot shows the AVG Rescue CD interface. At the top, a status bar indicates "You are protected. All security features are working correctly and are up to date." Below this, the "Scan results" dialog is open, with the "Infections" tab selected. The dialog displays a table of detected infections:

| File | Infection | Result |
|--------------------------------|-----------------------------|----------------------|
| C:\Utility\EICAR.ARJ | Virus identified EICAR_Test | Moved to Virus Vault |
| C:\Utility\EICAR.ARJ\Eicar.com | Virus identified EICAR_Test | Moved to Virus Vault |
| C:\Utility\EICAR.COM | Virus identified EICAR_Test | Moved to Virus Vault |
| C:\Utility\EICAR.ZIP | Virus identified EICAR_Test | Moved to Virus Vault |
| C:\Utility\EICAR.ZIP\Eicar.com | Virus identified EICAR_Test | Moved to Virus Vault |

Below the table, there are buttons for "View details", "Remove selected infections", and "Remove all unhealed infections". At the bottom of the dialog, a warning icon and text state "Scan was interrupted before completion", with a "Back" button next to it. On the left side of the interface, there is a sidebar with navigation options: Overview, Computer scanner, Update now, and Utilities on CD. A "Statistics" section at the bottom left provides scan details: Last scan: 3/18/08, 1:21 AM; Last update: N/A; Virus DB: 270.11.15/2004; AVG version: 8.5.280; License expires: 5/31/2010.

The **Infections** tab is only displayed in the **Scan results** dialog if a virus infection was detected during scanning. The tab is divided into three sections providing the

following information:

- **File** - full path to the original location of the infected object
- **Infections** - name of the *detected virus* (for details on specific viruses please consult the [Virus Encyclopedia](#) online)
- **Result** - defines the current status of the infected object that was detected during scanning:
 - **Infected** - the infected object was detected and left in its original location (for instance if you have [switched off the automatic healing option](#) in a specific scan settings)
 - **Healed** - the infected object was healed automatically and left in its original location
 - **Moved to Virus Vault** - the infected object was moved to the [Virus Vault](#) quarantine
 - **Deleted** - the infected object was deleted
 - **Locked file - not tested** - the respective object is locked and AVG is therefore unable to scan it
 - **Potentially dangerous object** - the object was detected as potentially dangerous but not infected (*it can contain macros, for instance*); the information should be taken as a warning only

There are three control buttons available in this dialog:

- **View details** - the button opens a new dialog window named **Detailed scan result information**:

In this dialog you can find information on the location of the detected infectious object (**Property name**). Using the **Previous / Next** buttons you can view information on specific findings. Use the **Close** button to close this dialog.

- **Remove selected infections** - use the button to move the selected finding to the [Virus Vault](#)
- **Remove all unhealed infections** - this button deletes all findings that cannot be healed or moved to the [Virus Vault](#)

- **Close results** - terminates the detailed information overview and returns to the [Scan results overview](#) dialog

5.4.3. Spyware Tab

The **Spyware** tab is only displayed in the **Scan results** dialog in if spyware was detected during scanning. The tab is divided into three sections providing the following information:

- **File** - full path to the original location of the infected object
- **Infections** - name of the detected spyware (for *details on specific viruses please consult the [Virus Encyclopedia](#) online*)
- **Result** - defines the current status of the object that was detected during scanning:
 - **Infected** - the infected object was detected and left in its original location (for instance if you have [switched off the automatic healing option](#) in a specific scan settings)
 - **Healed** - the infected object was healed automatically and left in its original location
 - **Moved to Virus Vault** - the infected object was moved to the [Virus Vault](#) quarantine
 - **Deleted** - the infected object was deleted
 - **Locked file - not tested** - the respective object is locked and AVG is therefore unable to scan it
 - **Potentially dangerous object** - the object was detected as potentially dangerous but not infected (it can contain macros, for instance); the information is a warning only

There are three control buttons available in this dialog:

- **View details** - the button opens a new dialog window named **Detailed scan result information**:

In this dialog you can find information on the location of the detected infectious object (**Property name**). Using the **Previous / Next** buttons you can view information on specific findings. Use the **Close** button to leave this

dialog.

- **Remove selected infections** - use the button to move the selected finding to the [Virus Vault](#)
- **Remove all unhealed infections** - this button deletes all findings that cannot be healed or moved to the [Virus Vault](#)
- **Close results** - terminates the detailed information overview and returns to the [Scan results overview](#) dialog

5.4.4. Warnings Tab

The **Warnings** tab displays information on "suspected" objects (*typically files*) detected during scanning. Typical examples of this kind of findings are: hidden files, cookies, suspicious registry keys, password protected documents or archives, etc.

5.4.5. Information Tab

The **Information** tab contains data on such "findings" that cannot be categorized as infections, spyware, etc. They can neither be positively labeled as dangerous but they are still worth your attention. All data on this tab is merely informative.

6. AVG Rescue CD Tools

The **AVG Rescue CD** contains several tools for advanced users that can be used for analyzing, managing and changing operating system settings.

The tools offered are as follows:

- [AVG Command Line](#)
- [freeCommander](#)
- [Map network drive](#)
- [AVG Registry Editor](#)
- [AVG Ping](#)
- [AVG Scan Disk](#)
- [AVG Notepad](#)
- [AVG IP Config](#)
- [AVG Keyboard](#)
- [Screen](#)

6.1. AVG Command line

This utility represents most of the standard MS Windows XP/2000 command line functions. Commands available within the **AVG Command Line** are almost identical to the MS Windows command line version.

You can run the **AVG Command Line** by clicking the **Command line** button located in the left menu of the basic **AVG Rescue CD** test interface. A new window where you can enter the commands will appear.



The following table contains a list of all commands available from within the **AVG**

Command Line. We recommend using these commands only for advanced users, who are well experienced in using the standard command line. The list contains a short description of each command and usually one or more usage examples. To display a complete list of individual commands' parameters please use the **Help** command or **/?** parameter (like attrib /?).

| Command | Description |
|-------------|--|
| HELP | <p>Provides list of commands with a short description. To display help information on a specific command use Help <command name>, for example:</p> <p>Help Attrib Will show help for the Attrib command.</p> |
| ATTRIB | <p>Displays or changes file or directory attributes. Possible attributes are: <i>read only, Archive, System and Hidden</i>. If used without a parameter, command will display attributes of all files in the current directory.</p> <p>Attrib file.exe Displays attribute for the file named <i>file.exe</i>.</p> <p>Attrib +R file.exe Will set attribute for the file named <i>file.exe</i> to <i>Read only</i>.</p> <p>Attrib -R c:\directory*. * Will remove <i>Read only</i> attribute from all files located in the <i>c:\directory</i> directory.</p> |
| CALL | <p>Can be used within a batch file to execute commands from another batch file. When the batch file exits, control returns to the file which called it.</p> <p>CALL batch.bat If used in a batch file, will run file called batch.bat and execute all commands that this file contains and then continue to process the original batch file.</p> |
| CD CHDIR | <p>Displays or changes the name of the current directory.</p> <p>CD c:\ Changes to C drive (C:\)</p> |

| | | |
|-------|--|--|
| | CD.. | Changes to upper directory level (if any available) |
| | CD Directory | Will change the directory to \directory. |
| | CHDIR Directory | Will change the directory to \directory. |
| | CHDIR C:\ | Changes to C drive (C:\) |
| CLS | Clears the console screen. | |
| COPY | Copies one or more files to another location. | |
| | copy c:*.* c:\temp | Copies all files from the root drive c: to the <i>Temp</i> directory located on the C drive. |
| | Copy help.txt c:\temp\ | Copies file help.txt to the <i>Temp</i> directory located on the C drive. |
| DATE | Displays or sets the date. Without parameters will display the current date setting and prompt for a change. | |
| DEL | Deletes one or more files. | |
| ERASE | del c:\temp*.* | Deletes all files located in the C:\TEMP directory. |
| | Erase file.txt | Erases file named file.txt |
| DIR | Displays a list of files and subdirectories in a directory. | |
| | Dir /P | Pauses after each screen full of information. |
| | Dir /S | Displays files in specified directory and all subdirectories. |
| | Dir /W | Uses wide list format. |

| | | |
|------|--|---|
| | Dir /B | Uses bare format (no heading information or summary). |
| ECHO | Enables or disables displaying of text on the current terminal device. | |
| | Echo on | Causes all subsequent commands in a batch file to be displayed on the terminal device before they are executed. |
| | Echo off | Reverses the effect of a previous ECHO ON (ECHO is OFF by default). The ECHO OFF command can be prevented from displaying by preceding it with an @ sign. |
| | Echo message | Displays „message“ in the current window. |
| EXIT | Terminates the current command line session. | |
| FOR | Runs a specified command for each file in a set of files. | |
| | To display content of all TXT or DOC files located in the current directory, use this syntax: | |
| | for %f in (*.doc *.txt) do type %f | |
| GOTO | Transfers execution to another statement within a batch file. | |
| | The label which is the target of a GOTO may be up to 255 characters long but may not include spaces (this is different from other operating systems). If two or more identical labels exist in a batch file the first one will always be executed. Attempting to GOTO a nonexistent label terminates the batch file execution. | |
| | GOTO has no effect when used interactively. | |
| | Goto Reference | Transfers to a line marked within a batch file as :Reference . |
| IF | Conditionally executes a command. | |
| | if not | If string1 equals string2, file.txt will be |

| | |
|----------|---|
| | <p>"string1"=="string2" deleted. Comparison is case insensitive. del file.txt</p> <p>If not errorlevel 1 del file.txt File.txt will be deleted if variable <i>Errorlevel</i> returns error code other than 1.</p> |
| IPCONFIG | <p>This command displays all current TCP/IP network configuration values. Used without parameter, it displays current IP address/ Subnet Mask and Default Gateway for all network interfaces.</p> <p>IPCONFIG /ALL Displays complete TCP/IP network configuration for all network interfaces.</p> |
| LABEL | Sets a disk volume label. |
| MD | Creates a directory or a subdirectory. |
| MKDIR | <p>MD C:\directory Creates directory named <i>Directory</i> on the C drive.</p> <p>MKDIR example Creates a directory named "example"</p> |
| MORE | <p>Displays output divided into more screens.</p> <p>Dir more Lists files or directories and enables a pause between displaying each screen.</p> |
| MOVE | <p>Moves one or more files to another location.</p> <p>move \docs*.doc \admin\documents</p> <p>Moves all files with .DOC extension from the \Docs directory to the \admin\documents directory.</p> |
| PATH | <p>Displays or changes the AVG Rescue CD CMI search path. Entering PATH will display the current PATH setting (initially this is the value given in your wine.conf file). To change the setting, follow the PATH command with the new value.</p> <p>PATH=C:\Program Files\Far;C:\WINDOWS\system32;C:\WINDOWS;</p> |

| | |
|--------|--|
| PAUSE | <p>PAUSE displays a message on the screen <i>Press Return key to continue</i> and waits for the user to press the Return key. It is mainly useful in batch files to allow the user to read the output of a previous command before it scrolls off the screen.</p> |
| PING | <p>This utility serves for verifying your Internet connection or for verifying the availability of a remote server/station. It is basically a diagnostic utility based on TCP/IP which sends so called ICMP packets to a given IP address or a domain name.</p> <p>Used without parameter, it displays help.</p> <p>Possible commands:</p> <p>Ping www.avg.com Verifies availability/response of the www.avg.com server</p> <p>Ping -t www.avg.com Continually keeps sending request messages to the server until interrupted by user (using CTRL+PAUSE/BREAK or CTRL+C)</p> <p>Ping -n 2 www.avg.com Specifies the number of requests to be sent to the given server.</p> <p>Default value is 4.</p> <p>Ping -w 200 www.avg.com Specifies the time limit to wait for the server reply. Indicated in milliseconds.</p> <p>Default value is 4000 (4 seconds)</p> |
| PROMPT | <p>PROMPT sets the command-line prompt. The string following the PROMPT command (and the space immediately after) appears at the beginning of the line when AVG Rescue CD CMI is waiting for input.</p> <p>PROMPT \$q</p> <p>Sets the command line to <i>equals sign (=)</i>.</p> |

| | |
|----------|--|
| PUSHD | Enables you to store the name of a directory for use by the <i>POPD</i> command and immediately changes to the specified directory. PUSHD c:\somedirectory |
| POPD | Switches to the directory stored by the <i>PUSHD</i> command. |
| REM | A command line beginning REM (followed by a space) performs no action, and can therefore be used as a comment in a batch file. REM This is a note in the batch file and will not be displayed |
| RENAME | Renames a file or files. |
| REN | Ren dok.txt dok.doc Renames file dok.txt in the current directory to file called dok.doc. Rename dok.txt dok.doc |
| RMDIR | Removes (deletes) an empty directory. |
| RD | Rmdir c:\directory Deletes a directory <i>directory</i> on the C drive. RD c:\directory |
| SET | Displays or changes the AVG Rescue CD CMI environment variables. Set windir=c:\win Sets the variable <i>Windir</i> to c:\win value. |
| SHIFT | Used in a batch file to remove one parameter from the head of the list, so parameter 2 becomes parameter 1 and so on. It has no effect if called from the command line. |
| START | Starts a separate window to run a specified program or command. start mybatch.bat |
| AVGSUBST | Enables you to assign a path to a drive letter and to create a virtual drive. avgsbst h: c:\folder Creates a virtual disk h, that will contain all files and folders located under c:\folder |

| | |
|---------|---|
| | avgsbst h: /d Removes the virtual drive h |
| SYSINFO | Used without parameter, the command displays current computer system information about the CPU and Memory. |
| TIME | Displays or sets the system time. |
| TITLE | Sets the window title for the AVG Rescue CD CMI window. TITLE This is a changed title |
| TYPE | Copies file content to the console device (or elsewhere if redirected). No check is made that the file is readable text. Type file.txt Displays file.txt content. |
| VER | Displays file information (usually version, copyright, language, etc.), if available. Works mostly with .exe, .dll file types. Used without parameter displays the version of the AVG Rescue CD CMI that you are running. Ver notepad.exe Displays notepad.exe file information. |
| VOL | Displays the disk volume label and serial number, if they exist. |
| XCOPY | Copies files and complete directory trees. Examples of usage: To update files in the <i>\web</i> directory by using files located in the <i>\source</i> directory that were changed since 20-2-2006, enter the following syntax: xcopy \source \web /d: 20-02-06 To update files in the <i>\web</i> directory ignoring the date, use this syntax: xcopy \source \web /u |

General advice - instead of putting a specific file name as a parameter, you can use (in most cases) standard substitutional characters called *wildcards* (? or *) and apply command to more files.

Batch file example

```
@echo off
REM This is a simple batch file example
REM Creates a directory named Soubory on c:\ disk
If not exist c:\soubory md c:\soubory
REM Removes attribute settings "read-only" for all .txt files in the current directory
attrib -R *.txt
REM Copies all .txt files to the c:\soubory folder
copy *.txt c:\soubory\
```

The batch commands need to be placed within the text file with .bat extension (like batch.bat for example). Once you execute the batch file, all entered commands will be processed.

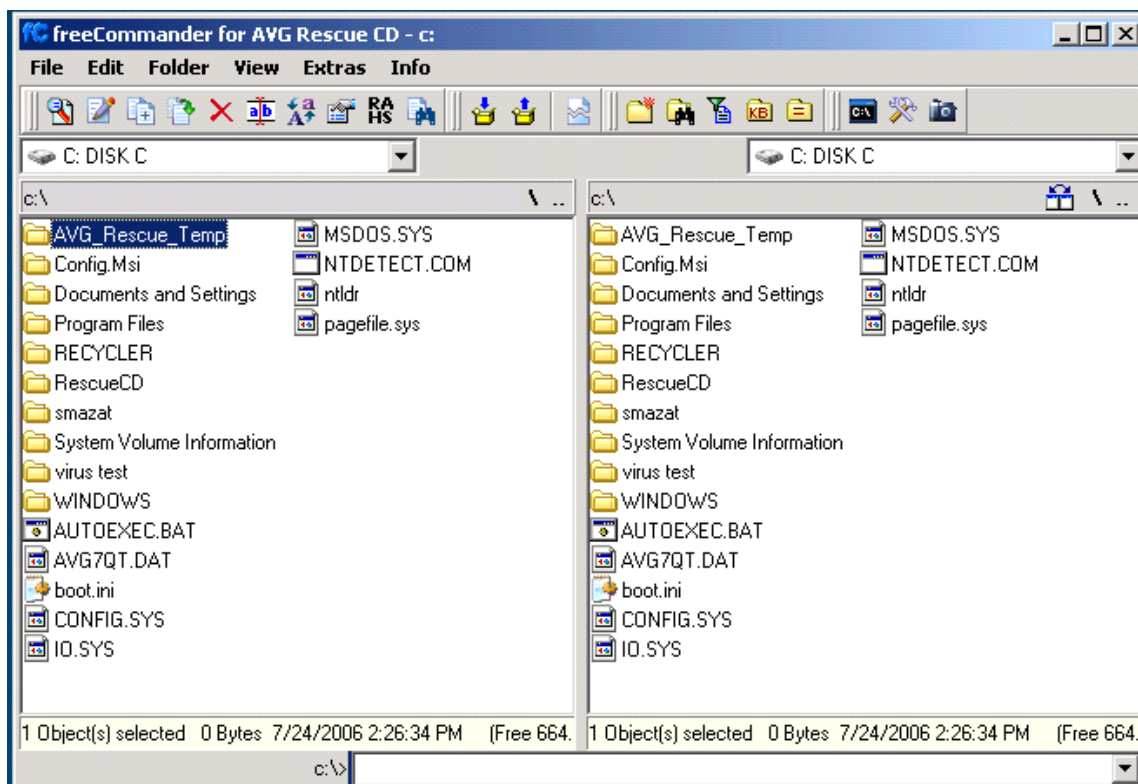
%ERRORLEVEL% is a system variable type that returns an error code of last command used. Any non-zero value usually indicates an error.

It is also possible to use an existing batch (.bat or .cmd), but keep in mind that it may not be 100% compatible with **AVG Command Line**. Therefore please always verify before running, that all commands (and their parameters) used in the batch are supported by **AVG Command Line**.

6.2. freeCommander

We recommend that only well experienced computer users with advanced computer knowledge use this program!

freeCommander is a dual-panel file explorer similar to programs such as Total Commander. It is slightly different from the standard Windows Explorer although it offers the same functions plus many additional features.



a) Basic usage

Selecting files or directories is almost the same as in Windows Explorer. The only main difference is, that you have two panels, where each can display different content (drive/directory) for convenient actions.

To select a drive, click on the appropriate dropdown top menu either in the left or right panel. freeCommander allows you to browse through **My network places** as well, if network connection is available.

You can easily scan one or more folders for viruses directly from the freeCommander user interface. Simply select the folders/files to be scanned, right-click with your mouse and select **Scan with AVG**. A new dialog will pop up and the selected content will be scanned.

b) Menu File

- o **View (F3)** - will use built-in viewer to view text files, images or possibly other content as well.

- o **Edit (F4)** - built-in editor for editing text files.
- o **Copy (F5)** - this will open a dialog box where you can type the target path for copying files/directories. As a default, the path of the target window will be presented.
- o **Move (F6)** - this will open a **Move** dialog box where you can select the target path for moving files or directories. As a default, the path of the target window will be presented.
- o **Delete (F8)** - to move files or directories to Windows Recycle bin, select them and press F8. If you prefer to completely remove your files or directories from a drive, use **Shift-F8** instead.
- o **Wipe (Shift+Ctrl+F8)** - alternative deletion method. Enables you to *wipe* selected files or directories. *Wiping* is a term used to describe the process of shredding the contents of a file (and its disk space). It is impossible to restore any data that has been properly wiped. Useful for removing files with sensitive/private content.

You can choose the number of overwrite runs (the more runs, the more securely the chosen content will be removed but also the more time it will take to complete).

- o **Rename (F2)** - will rename the current file or directory.
- o **Pack (Alt+F5)** - in special cases, you may need to archive some files to a single pack. freeCommander uses an integrated Zip system to pack your files. Simply select the files or directories you want to archive, and press Alt+F5.
- o **Unpack (Alt+F6)** - use this function to unpack a compatible .zip file.
- o **Search (Alt+F7)** - opens a comprehensive search dialog box, where you can select several options for searching for files or file contents.

c) **Menu Folder**

Contains a list of functions related to folders. You can create **new (F7)**, **set filter (Ctrl+F)**, **count folder size (Alt+F9)**, sort folders, compare etc.

d) **Menu View**

You can optionally customize viewing options here for both columns (panels).

e) **Menu Extras**

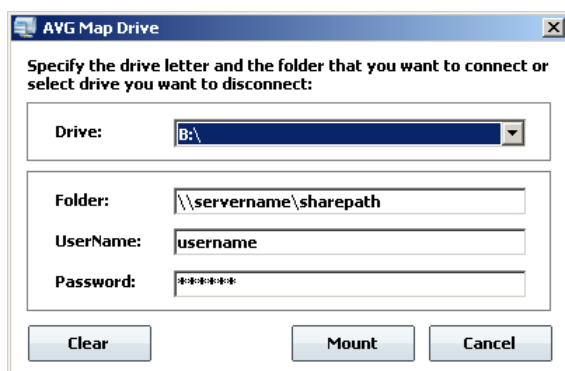
Contains shortcuts to settings dialogs and several useful tools:

- o **Favorite tools** - contains links to all **AVG Rescue CD tools**.
- o **Connect network drive (F11)** - use this to map a network drive. More information can be found in the chapter [6.3 Map network drive](#)
- o **Disconnect network drive (F12)** - use this to unmap a network drive. More information can be found in the chapter [6.3 Map network drive](#)
- o **Run** - equivalent to Windows *Start/Run* function.
- o **DOS box (CTRL+D)** -will start the [AVG Command Line \(See chapter 6.1\)](#).
- o **Take Desktop Snapshot** - allows you to enable and configure the screenshot capturing feature. Default screen capture hotkey is Shift+Ctrl+F10 (pressed at the same time).

If you decide to save the snapshot(s) to a file (default setting), you will find the saved files (by default) in the z:\freeCommander folder. You can use this function for example to make a screenshot of some important screen and send it to the AVG technical support in case of some specific problems.

6.3. Map network drive

You can use this tool to easily connect or disconnect a network drive.



You can mount a drive letter to any shared resource on a network. After that, you can quickly access the resource(s) by using either the [freeCommander](#) or [AVG Command Line](#). Additionally you can test the mounted drive for viruses or malware with AVG.

- **Drive** - select a drive letter to which you want the shared resource to be mounted or select a drive letter you want to dismount.

- **Folder** - type full path to the shared resource (folder)

Also in some cases, authentication may be needed for access, in that case fill in the **Username** and **Password** fields.

Note: In case your network is domain-based, you may need to specify the username in the following format:

Yourdomain\YourUserName

Working buttons:

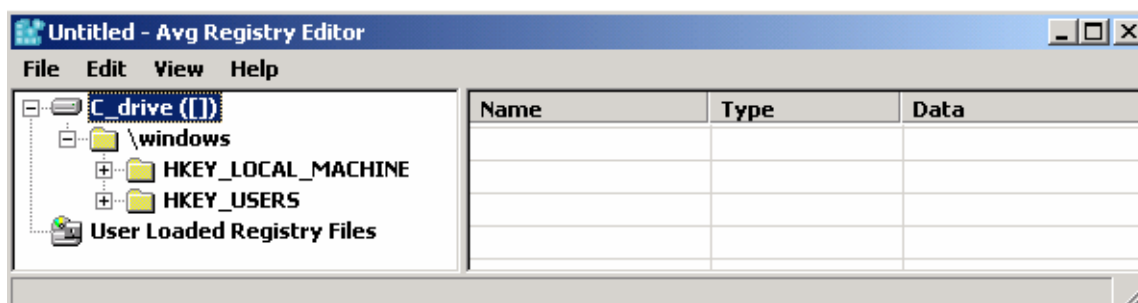
- **Clear** - click this button to clear the content of all fields.
- **Mount/Unmount** - click this button to process the selected choice and assign/unassign a drive letter of the shared resource.
- **Cancel** - closes the dialog.

6.4. AVG Registry editor

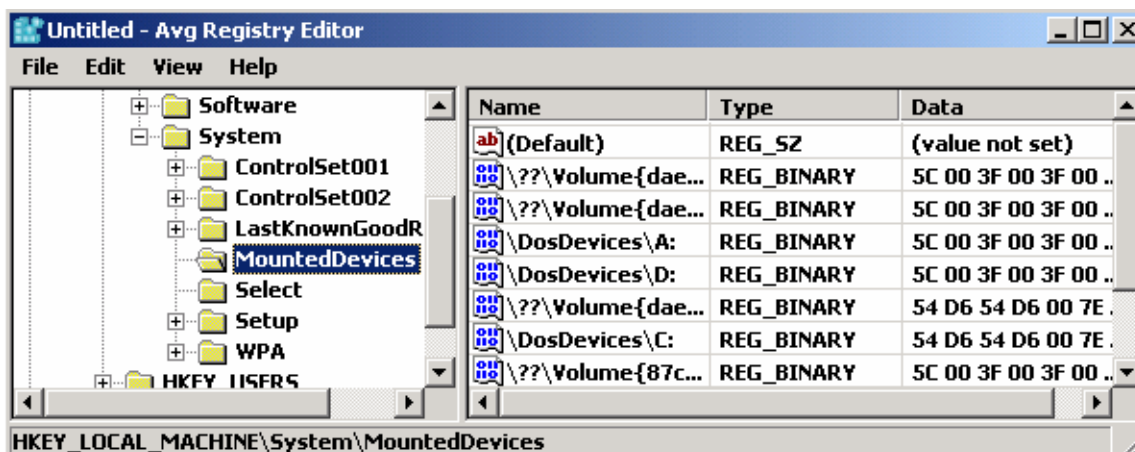
AVG Registry Editor is an advanced tool for viewing and changing settings in your system registry that contains sensitive information about how the computer runs. The registry can be defined as a database of windows configuration information organized in a tree format. The tool is intended mainly for advanced users who are able not only to edit, but also safely restore the registry in case of accidental misuse.

We strongly suggest not to edit the registry unless it is absolutely necessary. By changing the registry in an incorrect way, your computer may not function properly.

During the **AVG Rescue CD** startup, chosen registry entries of all local systems are loaded into temporary storage and then made available by using the **AVG Registry Editor** tool. Therefore the user can review the original system settings.



In the left part of the interface, a tree with chosen registry hives is displayed. On the sample screenshot you can see a registry tree that belongs to an operating system found on the C drive in the *Windows* directory. If the drive is labeled, the label name is showed within the square brackets as indicated on the sample screenshot.

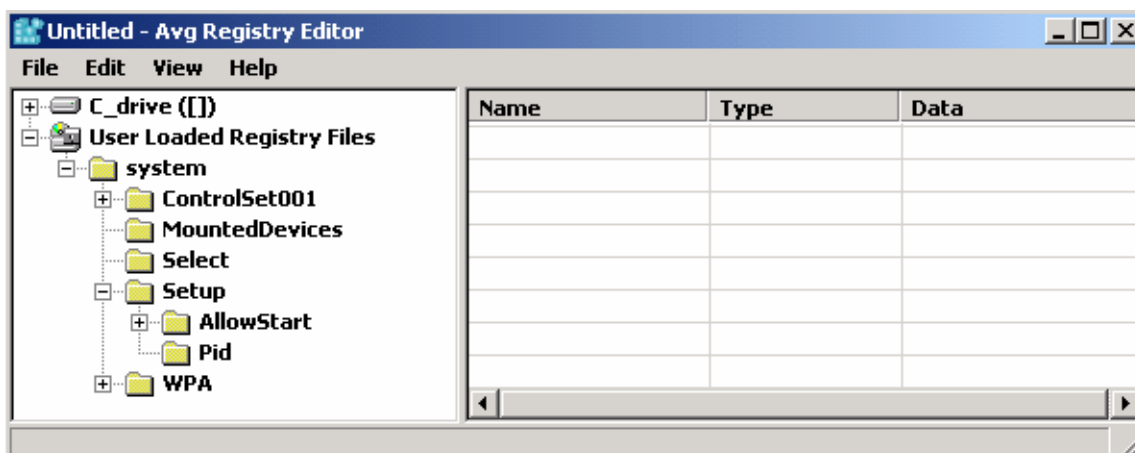


Located in the right part, are values corresponding to the selected key. These values can be changed by double clicking on the selected value (or by selecting **Edit/Change** from the upper menu). Values can be deleted by pressing the **DEL** button or by clicking the **Edit/Delete** upper menu item.

Adding values or keys is possible through the **Edit/New** upper menu item followed by choosing the requested value type or key. If you want to copy the name of the selected key to the clipboard, you can do so by choosing **Edit/Copy key name** from the upper menu.

If for some reason you need to add an existing registry hive (registry database) located in different part of the hard drive, you can do so by clicking on **User Loaded Registry Files** and then selecting the **File/Load Hive** from the upper menu. The requested registry hive file will be loaded. You can load more hives by repeating the whole process. You can only import complete hive files; importing .reg or similar export files is not supported.

Successfully loaded hives can be viewed and edited in the same way as any other registry entry. Note, that every change done will be immediately saved to the particular hive file! To unload the hive file choose the database and from the **File** menu select **Unload Hive** item.

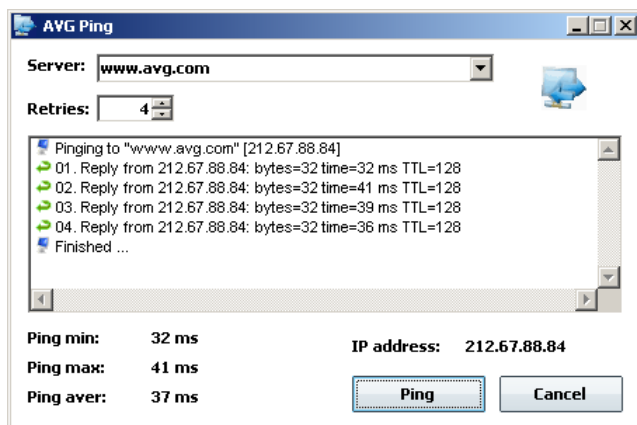


Example screenshot – loaded *software* registry hive (from a different hard drive location).

To export a selected branch to a .reg file, click **File** menu and select **Export**, choose a file name and confirm your choice by pressing **Save** button. Registry files are saved with .reg extension.

6.5. AVG Ping

AVG Ping is a utility for verifying your Internet connection, directly from the **AVG Rescue CD** environment, or for verifying the availability of a remote server/station. It is basically a diagnostic utility based on TCP/IP which sends so called ICMP packets to a given IP address or domain name.



It can also lookup a DNS name and display it as an IP address.

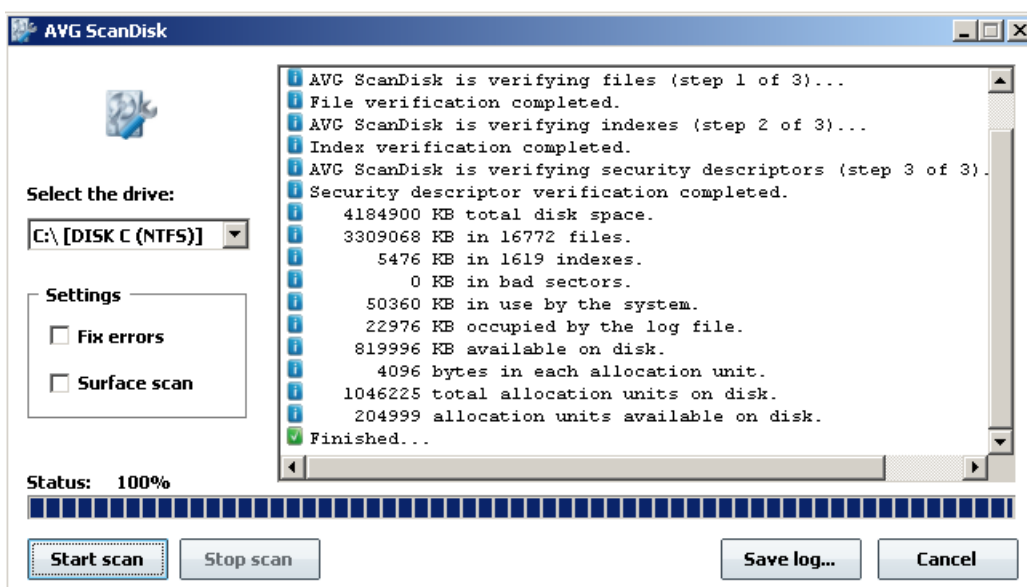
Use **Server** field to enter the computer DNS or IP address you want to verify for availability. Then choose the number of retries in the **Retries** box and click the **Ping** button.

The results will be displayed with information about transfer time.

Note: The list of tested servers will be kept also after the **AVG Ping** application restart.

6.6. AVG Scan disk

The **AVG Scan Disk** tool is a substitute for the Chkdsk utility, which is usually available in the MS Windows operating systems. **AVG Scan Disk** can analyze hard disks and report (and if possible fix) errors. The current hard disk status is displayed after each analysis.



After **AVG Scan Disk** startup, choose the drive letter that is to be checked. We recommend that you only analyze the drive during the first run, i.e. only have the **Surface scan** option ticked. Analysis can be started by clicking the **Start scan** button.

If there are any errors listed in the final report, then you can try to fix them by ticking the **Fix errors** box and re-analyzing the drive again by clicking the **Start scan** button. This time **AVG Scan Disk** will try to fix the recently found errors.

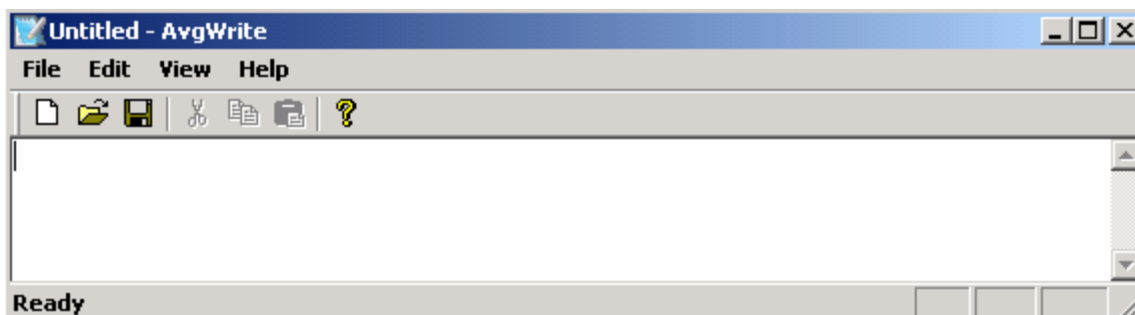
Before using the *Fix errors* feature, we recommend to backup all important data from your drive to some portable device. It is recommended to run AVG Scan Disk before starting any other applications, because AVG Scan Disk needs exclusive access to the scanned drive when fixing errors. Also do not perform any other actions during the analysis.

Once the checking process is finished, you can save the log by pressing the **Save log** button.

6.7. AVG Notepad

AVG Notepad is a simple text editor that allows you to create or edit plain TXT documents. It can be used to quickly open and edit some system configuration files, like autoexec.bat, config.sys, system.ini etc.

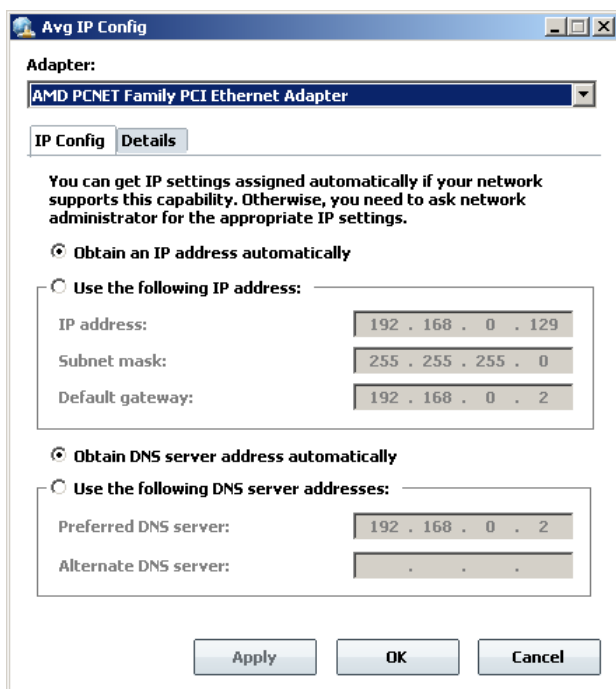
AVG Notepad supports only very basic formatting. Saving files is possible under text format with Unicode, ANSI, UTF-8 or Unicode big endian coding. Using different kinds of coding might be useful when saving documents in special character sets.



6.8. AVG IP Config

AVG IP Config is a utility for managing your network settings. It displays all current TCP/IP network configuration values and allows you to change them if needed.

- **IP Config tab**



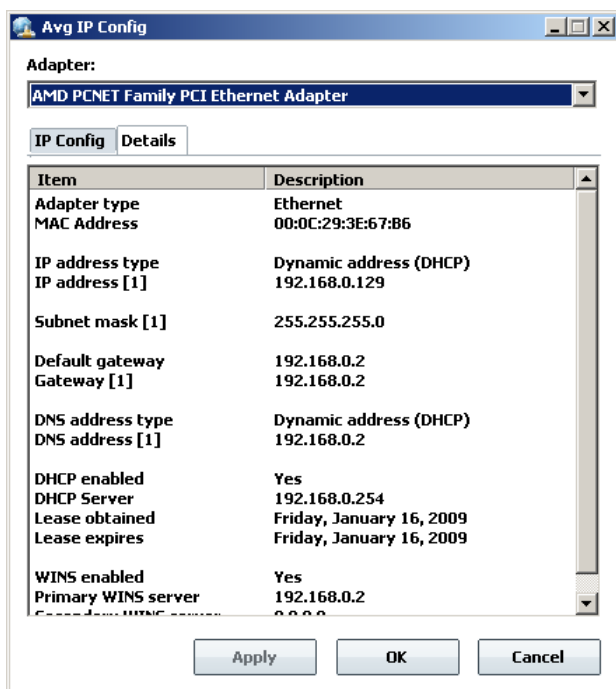
The **IP Config** tab shows the current network settings for the selected network adapter (see the **Adapter** menu) and allows you to change your DNS and IP settings.

If you are connected directly to the Internet by LAN or another kind of CATV (Cable TV) connection, your computer will usually obtain all necessary configuration information from the DHCP server. The example figure above shows the settings for a LAN connection where the settings are assigned automatically.

If there are no settings present, and you are convinced that you should be able to connect to the Internet, please contact your Internet (network connection) provider and ask for the settings.

To specify your own network settings, click the **Use the following IP address** or **Use the following DNS server addresses** radio buttons and insert your own values. To confirm all changes press the **Apply** button or **OK** button to finish editing.

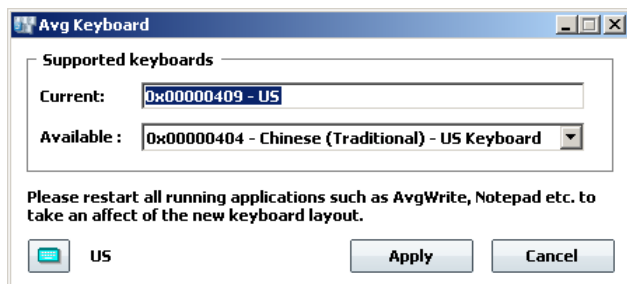
- **Details tab**



The **Details** tab shows more detailed information about your network connection settings.

6.9. AVG Keyboard

AVG Keyboard is a utility for changing keyboard layout. By default, the US keyboard layout is used. If you prefer to use a different one, simply choose another from the **Available** drop down menu.



To confirm your choice use the **Apply** button. Once you confirm your choice, you can use the lower left corner icon to display the actual keyboard layout (just for overview, if it fits your needs). Press **Cancel** button to close the dialogue.

Note: You must restart the application, in which you want the new layout to be used, if it is currently running (e.g. Notepad).

7. FAQ and Technical Support

Should you have any problems with your **AVG Rescue CD** or **AVG**, either business or technical, please refer to the FAQ section of the AVG website at www.avg.com.

If you do not succeed in finding help this way, contact the technical support department at support@avg.com. Be sure to include your AVG License number in the body of the e-mail.

Should you experience any serious difficulties with your copy of **AVG Rescue CD**, you may consult the technical support team using the following telephone number: +420 533 338 923 (standard telephone tariff applies to local and national calls). Please prepare your valid **Communication Key** that you received with your **AVG Rescue CD** license number.