

# Top recommendations to speed up your PC

## Tips and Tricks

**Document revision 85.1 (22.9.2009)**

Copyright AVG Technologies CZ, s.r.o. All rights reserved.  
All other trademarks are the property of their respective owners.

## Contents

<b>1. How to speed up your PC</b> .....	<b>3</b>
<b>2. Daily scan running weekly</b> .....	<b>4</b>
2.1 How to scan .....	5
2.2 What to scan .....	6
<b>3. New monthly scan</b> .....	<b>7</b>
3.1 Schedule settings .....	7
3.2 How to scan .....	7
<b>4. Unused functions</b> .....	<b>9</b>
4.1 E-mail Scanner .....	9
4.2 Microsoft Office plugin .....	9
4.3 Web Shield .....	9
4.4 No internet connection on computer .....	9
4.5 Uninstallation of components .....	10
<b>5. Other tips</b> .....	<b>11</b>

## **1. How to speed up your PC**

You can optimize the performance of your computer by utilizing AVG's customized settings. This can be achieved by turning off unused functions, or by scheduling tasks (*such as program updates*) during pre defined scheduled maintenance times, or when the user is not at the computer.

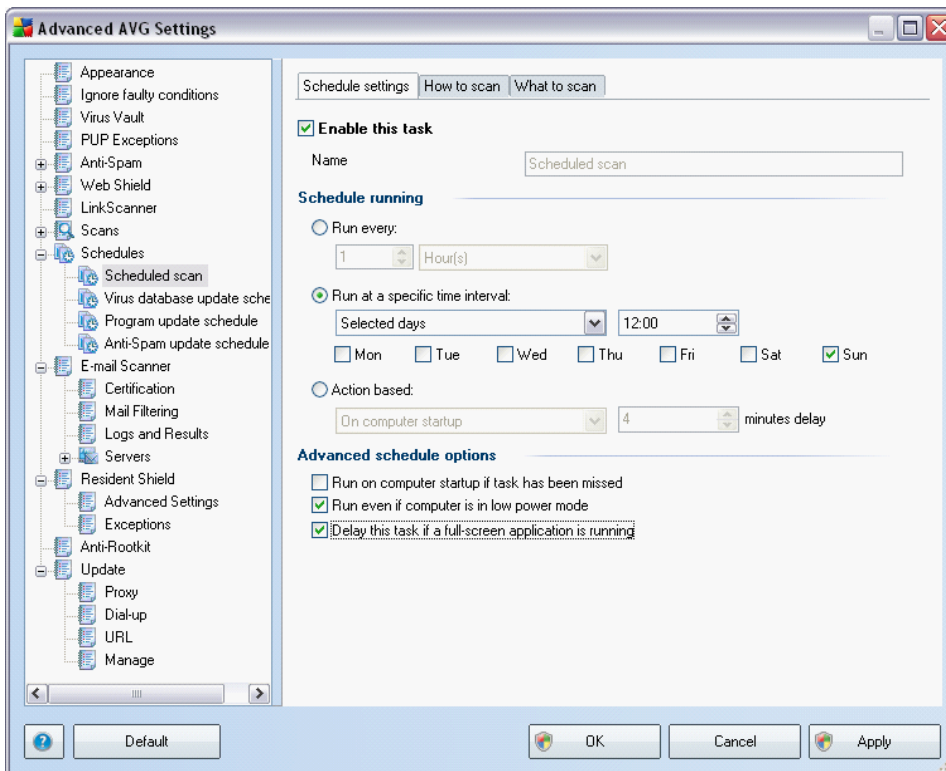
## 2. Daily scan running weekly

By default, AVG scans the whole computer daily; however in most cases it is only necessary to perform critical tests on a weekly basis, and complete scans on a monthly basis. Please follow the steps below to change settings for optimum performance.

The following steps will configure AVG to run a weekly scan on critical folders:

- In the AVG User Interface, click on the **Tools** menu and select **Advanced Settings**
- In the left hand pane, select **Schedules/Scheduled Scan** option

The default scan setting is set to be launched daily at 12:00 pm. To change this setting to perform a weekly scan, choose the *Selected days* option from the pull down menu, then click on the day you wish to perform the scan (*in the example below, we chose Sunday*), and you are also able to adjust the time that the scan runs as well. We recommend planning the scan when the PC is not being used, but is still running (*lunch, off hours, etc.*).



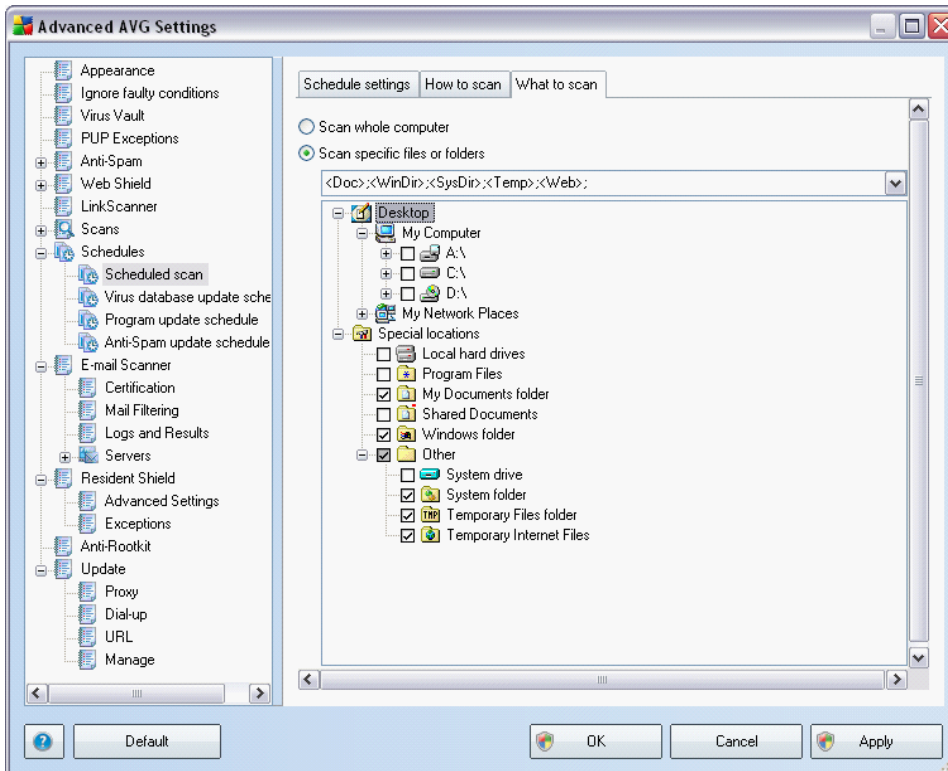
## 2.1. How to scan

Select the **How to scan** tab in the right hand pane. Here you can set the behavior of the scan. From all options listed, the **Automatically heal/remove infections** is probably the most important. When selected, AVG will automatically detect and remove infections without prompting the user. A copy of all healed/removed files will be stored in the **Virus Vault** and can be restored at a later date if need be.

In the middle of the window is the **Scan process priority** setting. This allows you to choose the amount of system resources the scan will use. The middle setting ( *Automatic scan* ) will use resources with regard to other applications. Moving the slider to the left ( *Slow scan* ) will make the scan run longer but the impact on computer will be minimal. Moving the slider to right ( *Fast scan* ) will allow AVG to use the maximum of computer resources to finish the scan quickly. Selecting this option may slow other applications in use. We recommend using the fast scan if the user is offline during the scanning process, and leaving the other options on this screen in their default settings.

## 2.2. What to scan

You can set the areas to be scanned on the last tab - **What to scan**. We recommend scanning critical folders which are usually targets of infections (see diagram below):



Save all changes with the **Apply** button in bottom part of window.

### 3. New monthly scan

Now we will configure a scheduled scan that will run once a month that scans the whole computer. This will verify that there are no passive infections stored in any folder (it would also be detected by Resident Shield the first time it runs).

- In the AVG User Interface, open **Advanced settings** (*Tools menu, Advanced settings option*) and right click on **Schedules**
- Select the **New schedule** option from context menu
- Type a name for the new schedule (*i.e. Monthly scan*) and confirm by pressing the **OK** button. The new schedule will immediately appear in the list on right pane

#### 3.1. Schedule settings

On the **Schedule settings** tab set the **Run at specific time interval** option to **Every selected day in Month**. Enter the date you wish to run the scan in the **Day** field, and time you wish to run the scan.

#### 3.2. How to scan

In the **How to scan** tab, you can deselect the **Scan Inside Archives** option if you believe that ZIP, RAR and other archive files contents are not a threat. However, you may wish to select the **Scan for rootkits** option to make sure that AVG searches for files hidden by the rootkit technique.

Please note that not all rootkits are harmful. Some legitimate applications (*e.g. Alcohol 120% or Daemon Tools*) use this technique. For more information please see FAQ topic on this page: [www.avg.com/faq.num-1539](http://www.avg.com/faq.num-1539)

The rest of the options can be left as default. Click the **OK** button to confirm and save changes.

The scans are now set to find all infections while using minimal system resources. Any new infections will be identified by the **Resident Shield** in between scans.

We also recommend that you increase your virus database updates by scheduling them every hour instead of the every 4 hours (*default*).

You can change the virus database update schedule by accessing this entry under the **'Schedules'** heading in the **Advanced Settings** window. The default is to check for updates every 4 hours, but you can change this to update every hour. This will

insure you have the latest virus definitions without impacting the performance of your computer.



## 4. Unused functions

You can further improve the performance of your PC by turning off unused functions. You would do this in the case of:

### 4.1. E-mail Scanner

If you are using a browser based email application such as gmail or Yahoo, you do not need to install the **AVG Email Scanner**. The email scanner is used to check email attachments downloaded directly to local email client application such as Windows Mail, Outlook, Thunderbird etc. Email attachments downloaded from the web interface are checked by **Web Shield** and **Resident Shield**.

### 4.2. Microsoft Office plugin

If you are not using the Microsoft Office suite, it is not necessary to install the plug-in. The Microsoft Office plugin checks all opened files and can detect and remove harmful macros. Also, if you are using MS Office, and you notice performance issues on startup, you can remove the plugin and still be protected against most threats by **Resident Shield** which checks files when accessed.

### 4.3. Web Shield

If you notice slower performance when downloading files after installing AVG, it may be due to AVG's **Web Shield** scanning the downloaded files in real time. This will often happen if using a computer with an older processor. If the download rate is substantially slower than usual, you may wish to disable or uninstall **Web Shield** to speed up the download. AVG's **Resident Shield** will scan the files once downloaded; however, **Web Shield** will detect and block threats before they reach your PC. We do not recommend disabling this option, but it will increase the download speed especially on larger files.

### 4.4. No internet connection on computer

If the computer is not connected to the internet, it is not necessary to have online protection components installed. This includes:

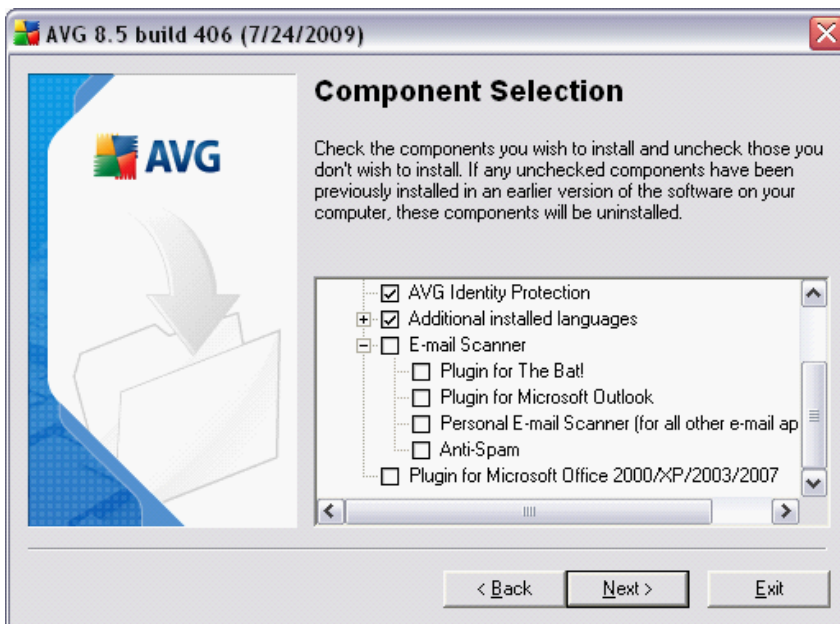
- E-mail Scanner and Anti-Spam
- Firewall
- Linkscanner and Webshield

## 4.5. Uninstallation of components

To uninstall one or more features within the AVG Suite, we recommend that you download the latest installation files from AVG's program download site. This will ensure that you get the latest version of AVG and will not need to download additional updates.

Save the file locally then run the installation once the download is complete. The installation wizard will bring you to a screen where you can choose the installation type. Choose the **Add or Remove Components** option and confirm your license information.

Once done, you will see a list of components to choose from. The options with a check mark next to them will be installed. The ones without will either not be installed, or will be removed. Select or deselect the components you wish to install and choose **Next** to complete the installation. Once done, only the components that you have selected will be installed (*some installs may require reboot*).



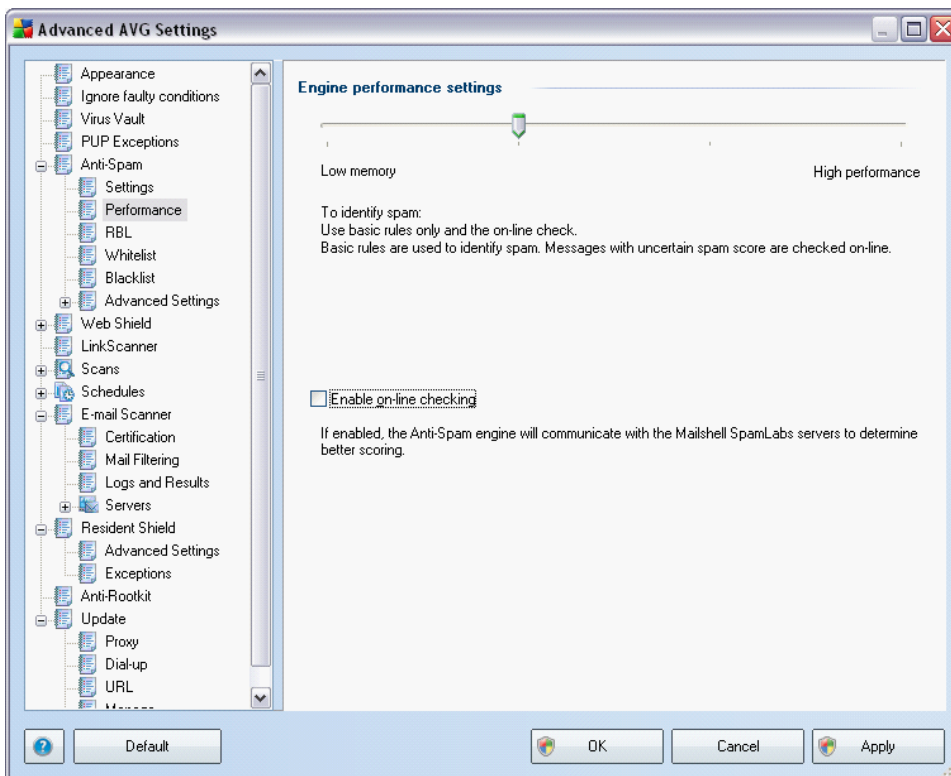
## 5. Other tips

If your email application seems to run slower than normal, you can adjust the spam control setting by doing the following:

- Open the **Advanced Settings** menu (*Tools/Advanced Settings* options in AVG user interface)
- Scroll down to the **Anti Spam** option and select the **Performance** setting

In the right hand pane you will see a slider that, when moved to the left, will speed up the performance, but it is more likely that spam messages will not be recognized. The more you move the slider to the right, the more effective the spam check will be, but the slower the performance will be as well.

Below the **Engine performance settings** is the **Enable on-line checking** option. By turning this option off, you can also improve the speed of your computer.



Confirm changes by clicking the **OK** button.

If you do not wish to be notified of AVG's updates, scans or other product notifications, you can deselect those options by going to the **Advanced Settings** screen / **Appearance** section, and deselecting the **Balloon tray notifications**.

You may also want to turn off **AVG Firewall** dialogs for applications that run in full screen mode (*i.e. games, Power Point presentations etc.*). This will prevent AVG from prompting you if you want to allow or block communication for unknown applications while running in full screen mode.

You can enable this option by double clicking on the Firewall icon in the AVG User Interface and selecting the **Enable gaming mode** option at the bottom of the screen.